

B1 INSTALLATION DRAWING

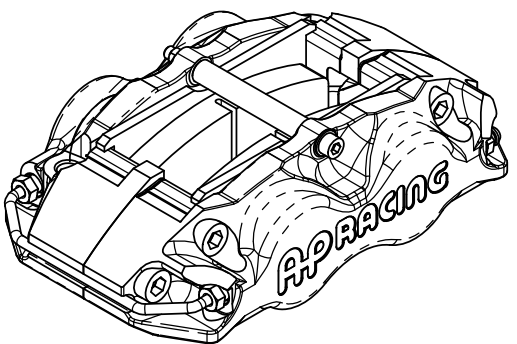
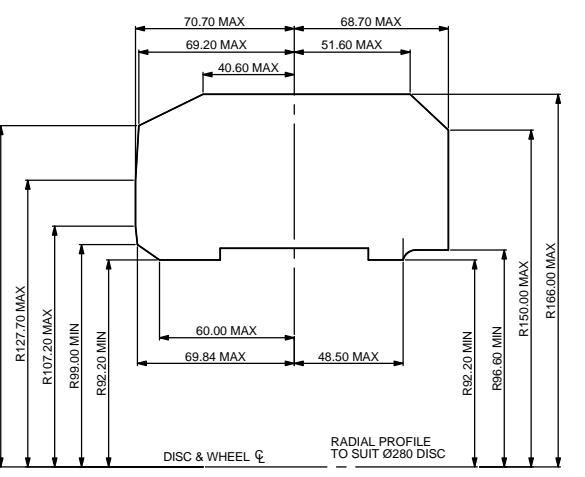
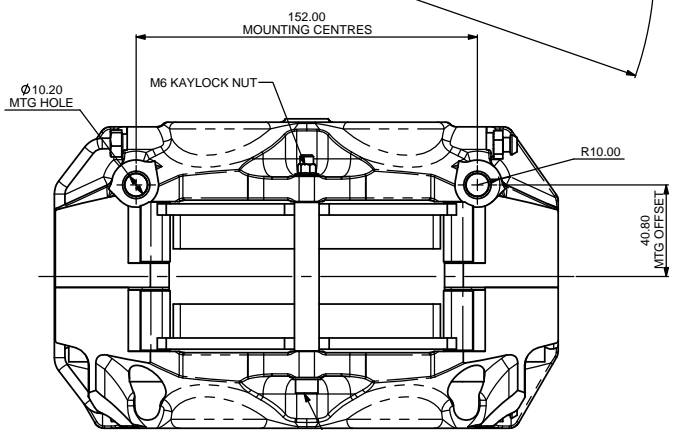
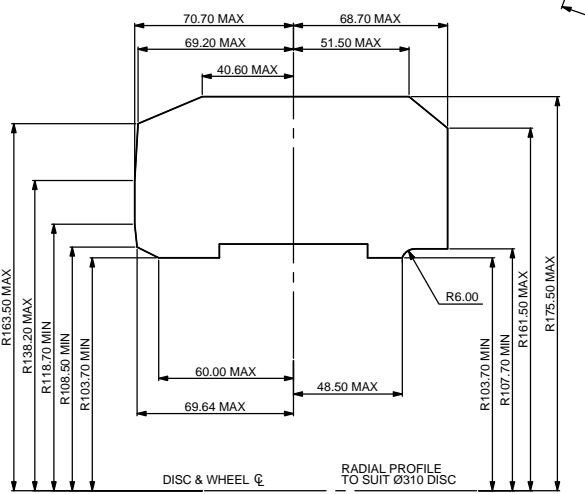
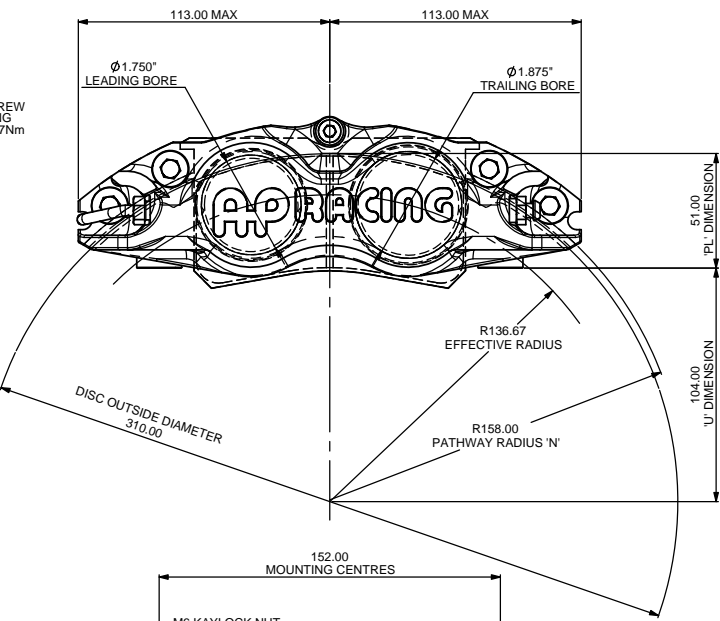
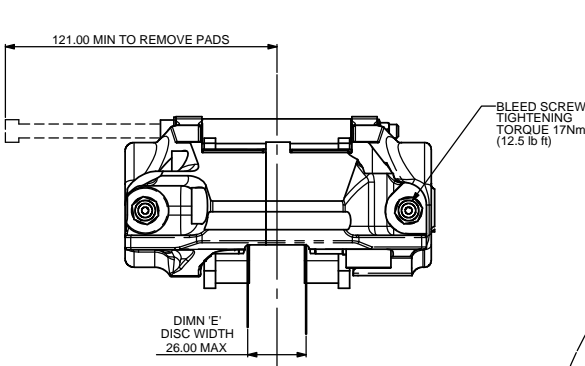
IF THIS DOCUMENT IS PRINTED IN HARDCOPY, IT IS FOR INFORMATION USE ONLY AND THEREFORE IS NOT SUBJECT TO UPDATING CONTROLS. ALWAYS REFER TO SOLIDWORKS VIEWER FOR LATEST ISSUE



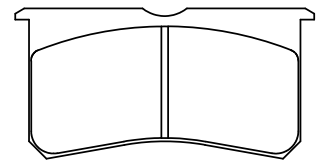
THIS DRAWING IS CONFIDENTIAL AND IS SUPPLIED ON THE EXPRESS CONDITION THAT IT SHALL NOT BE LOANED OR COPIED OR DISCLOSED TO ANY OTHER PERSON OR USED FOR ANY OTHER PURPOSE WITHOUT THE WRITTEN CONSENT OF AP RACING LTD.



AP Racing
Wheler Road
Coventry
CV3 4LB
Tel: +44 024 7663 9595
Fax: +44 024 7663 9559
e-mail: sales@apracings.co.uk
Web site: HTTP://www.apracings.com



PAD INFORMATION
CP8250D41-####



PAD THICKNESS - 20.20mm (0.795")
PAD AREA - 50.67cm² (7.854 in²)
PAD VOLUME - 102.35cm³ (6.244 in³)

GENERAL DESCRIPTION

THIS IS A LOW COST 4 PISTON DIFFERENTIAL BORE CALIPER, DESIGNED TO OPERATE ON A VENTILATED IRON DISC OF Ø285.0 mm TO Ø310.0 mm, 26.0 MAX WIDE DISC. ALL CALIPERS ARE MANUFACTURED WITH BLEED SCREW AND PIPE ASSEMBLY PROTECTION. STAINLESS STEEL PAD ABUTMENT WEAR PLATES AND HIGH TEMPERATURE LOW DRAG SEALS ARE FITTED AS STANDARD. SEALS ARE 'SEAL IN BORE' TYPE.

TYPICAL APPLICATION

BUDGET RALLY CALIPER.

TECHNICAL INFORMATION

TOTAL PISTON AREA - 66.67cm²

PISTON MATERIAL - STAINLESS STEEL (STANDARD)

BODY MATERIAL - ALUMINIUM ALLOY

HYDRAULIC CONNECTIONS - M10x1.00

NOTES - SHOULD THE PISTON BE INADVERTENTLY REMOVED, THEY SHOULD BE WIPED CLEAN AND BE SMEARED WITH AP RACING BRAKE FLUID BEFORE REPLACEMENT.

IMPORTANT INFORMATION

DISC AND CALIPER MOUNTING TOLERANCES TO BE SUCH THAT THE DISC IS CENTRAL TO THE CALIPER TO WITHIN ±0.019" (0.50mm). THE CLEARANCE FROM DISC DIAMETER TO PATHWAY SHOULD BE 0.098" (2.5mm) NOM.

KEY TO DIMENSIONS

DIMENSION 'PL' - TOP OF PAD MATERIAL TO MOUNTING BOSS FACE WITH PAD HANGING DOWN FROM THE TOP OF THE WEAR PLATES.

DIMENSION 'C' - DISC CENTRE LINE TO MOUNTING STUD CENTRE LINE.

DIMENSION 'U' - WHEEL CENTRE TO CALIPER MOUNTING BOSS FACE, (DISC DIAMETER / 2) - 'PL' DIMENSION.

DIMENSION 'H' - MOUNTING HOLE DIAMETER.

RADIUS 'N' - RADIUS OF DISC PATHWAY.

EFFECTIVE RAD. - DISTANCE FROM WHEEL CENTRE LINE TO NOMINAL PISTON CENTRE LINE.

AP RACING TECHNICAL SECTION WILL BE PLEASED TO ADVISE ON THE MOST SUITABLE EQUIPMENT FOR ANY APPLICATION.

REPLACEMENT SEAL KIT

SEAL KIT (HIGH TEMP) CP4518-LM

PART NUMBERS:
CP8351-2S0L RIGHT HAND TRAILING (AS SHOWN)
CP8351-3S0L LEFT HAND TRAILING
CP8351-4S0L RIGHT HAND LEADING
CP8351-5S0L LEFT HAND LEADING

Rev No	Alterations			Zone	Initials
	Date & No.	Particulars	#		
1	07/05/2009 B5584	FIRST ISSUE	#	CDA	
2	07/05/2009 B5594	ARB SPRINGS REMOVED.	#	CDA	
3	02/10/12 B6624	TIGHTENING TORQUE FOR PAD RETAINER BOLTS 11.5Nm WAS 11.9Nm COPPER SLIP NOTE ADDED	#	SAT	

SCALE 1:1	SHEET 1 OF 2
DRAWN Chris Arowsmith	
APPROVED	
DERIVED FROM	
TITLE 4 POT, 152.0 x 40.8 RADIAL MTG CALIPER ASSEMBLY	
DRG NO.	CP8351-1CD

B1 INSTALLATION DRAWING

IF THIS DOCUMENT IS PRINTED IN HARDCOPY, IT IS FOR INFORMATION USE ONLY AND THEREFORE IS NOT SUBJECT TO UPDATING CONTROLS. ALWAYS REFER TO SOLIDWORKS VIEWER FOR LATEST ISSUE



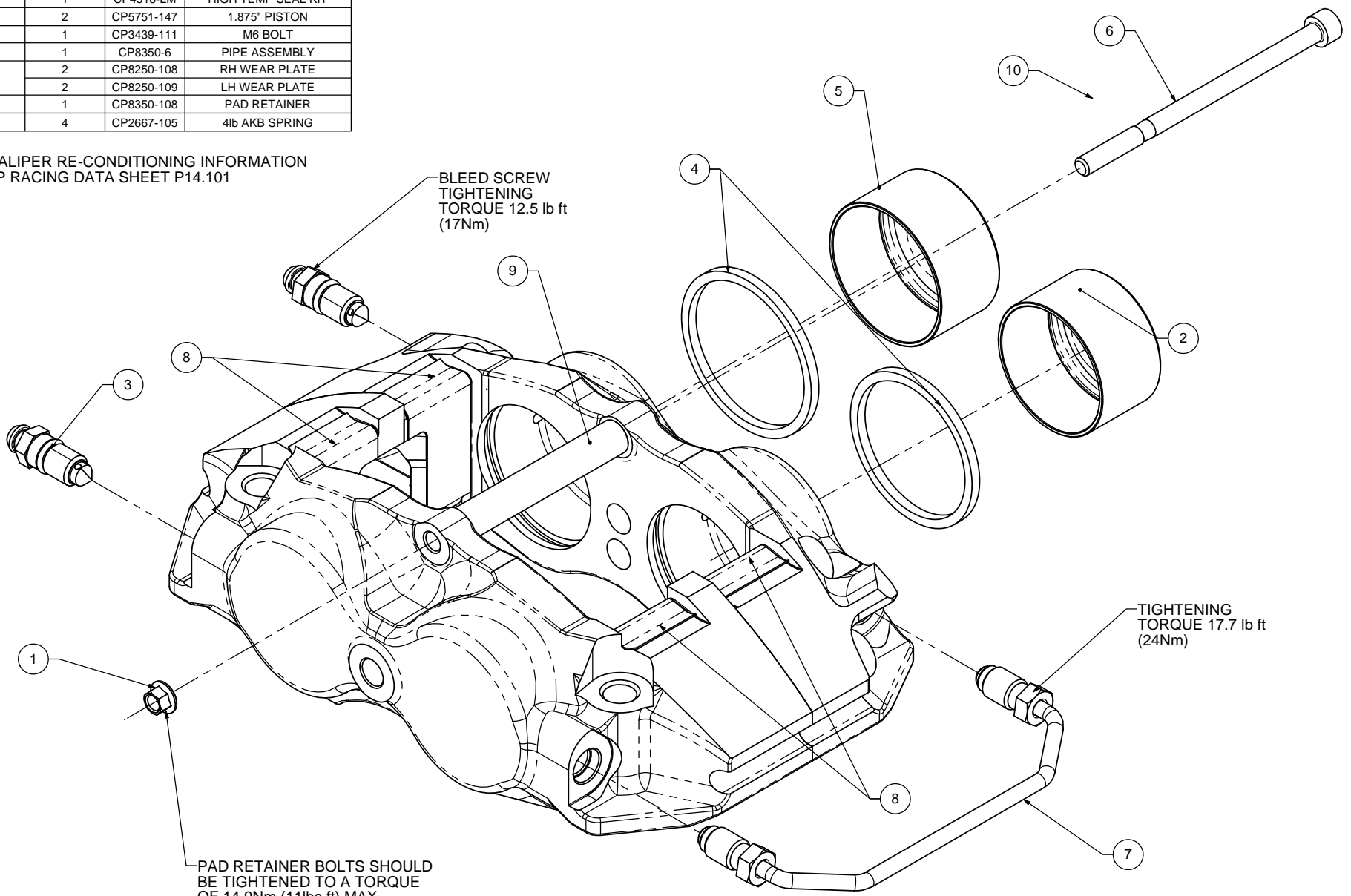
THIS DRAWING IS CONFIDENTIAL AND IS SUPPLIED ON THE EXPRESS CONDITION THAT IT SHALL NOT BE LOANED OR COPIED OR DISCLOSED TO ANY OTHER PERSON OR USED FOR ANY OTHER PURPOSE WITHOUT THE WRITTEN CONSENT OF AP RACING LTD.



AP Racing
Wheler Road
Coventry
CV3 4LB
Tel: +44 024 7663 9595
Fax: +44 024 7663 9559
e-mail: sales@apracings.co.uk
Web site: HTTP://www.apracings.com

SPARE PARTS LIST			
REF	QTY / CALIPER	PART No.	DESCRIPTION
1	1	CP3423-107	M6 NUT
2	2	CP5751-145	1.750" PISTON
3	1	CP3880-1	BLEEDSCREW & ORING KIT
4	1	CP4518-LM	HIGH TEMP SEAL KIT
5	2	CP5751-147	1.875" PISTON
6	1	CP3439-111	M6 BOLT
7	1	CP8350-6	PIPE ASSEMBLY
8	2	CP8250-108	RH WEAR PLATE
	2	CP8250-109	LH WEAR PLATE
9	1	CP8350-108	PAD RETAINER
10	4	CP2667-105	4lb AKB SPRING

FOR CALIPER RE-CONDITIONING INFORMATION SEE AP RACING DATA SHEET P14.101



BLEED SCREW TIGHTENING TORQUE 12.5 lb ft (17Nm)

TIGHTENING TORQUE 17.7 lb ft (24Nm)

PAD RETAINER BOLTS SHOULD BE TIGHTENED TO A TORQUE OF 14,9Nm (11lbs ft) MAX

Issue No.	Alterations		
	Date & No.	Particulars	Zone / Initials
-	-	SEE SHEET1 FOR ISSUE INFORMATION.	-

SCALE 2:1	SHEET 2 OF 2
DRAWN	Chris Arrowsmith
APPROVED	
DERIVED FROM	
TITLE	
4 POT, 152.0 x 40.8 RADIAL MTG CALIPER ASSEMBLY	
DRG NO.	CP8351-1CD