

A1 INSTALLATION DRAWING

IF THIS DOCUMENT IS PRINTED IN HARDCOPY, IT IS FOR INFORMATION USE ONLY AND THEREFORE IS NOT SUBJECT TO UPDATING CONTROLS. ALWAYS REFER TO SOLIDWORKS VIEWER FOR LATEST ISSUE



THIS DRAWING IS CONFIDENTIAL AND IS SUPPLIED ON THE EXPRESS CONDITION THAT IT SHALL NOT BE LOANED OR COPIED OR DISCLOSED TO ANY OTHER PERSON OR USED FOR ANY OTHER PURPOSE WITHOUT THE WRITTEN CONSENT OF AP RACING LTD.



AP Racing
Wheler Road
Coventry
CV3 4LB

Tel: +44 (0) 24 7663 9595
Fax: +44 (0) 24 7663 9559
e-mail: engineering@apracings.co.uk
Web site: <http://www.apracings.com>

© AP Racing Ltd. 2005

DISC PART NUMBERS
CP5000-177 NON HANDED AS DRAWN

NOTE: THE CURVED GROOVES ON THIS DISC RUN IN OPPOSITE DIRECTION ON EACH SIDE, THUS MAKING IT NON-HANDED EVEN WHEN GROOVED.

THIS DISC HAS AN APPROXIMATE MASS OF 2.4 Kg DEPENDANT UPON SUFFIX TYPE.

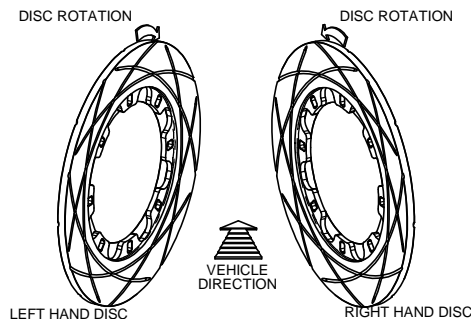
SUFFIX TO DISC PART NUMBERS:-

SUFFIX DETAILS
P PLAIN (NO GROOVES OR HOLES)
D CROSS DRILLED ONLY AS SHOWN.
CGnn CURVED GROOVES ONLY AS SHOWN, VALUE mm PER FACE.
eg CG4 MEANS 4 CURVED GROOVES PER FACE.

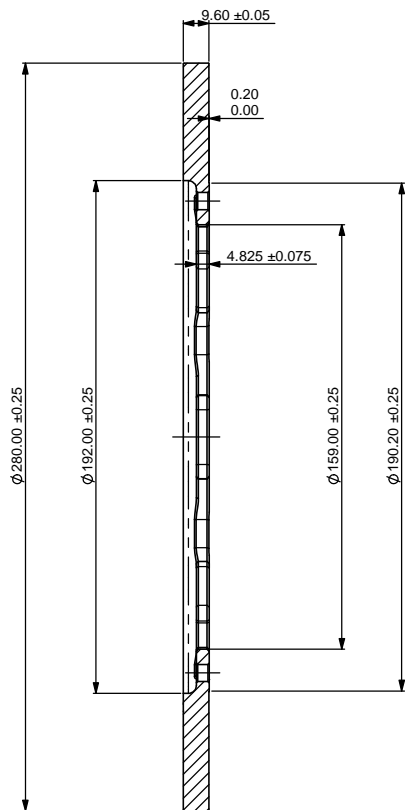
THIS DISC WAS DESIGNED TO WORK WITH A D42 DEPTH PAD

FOR DISC MOUNTING TECHNIQUES, BEDDING PROCEDURE AND DISC COOLING RECOMMENDATIONS SEE AP RACING BRAKE DISC CATALOGUE

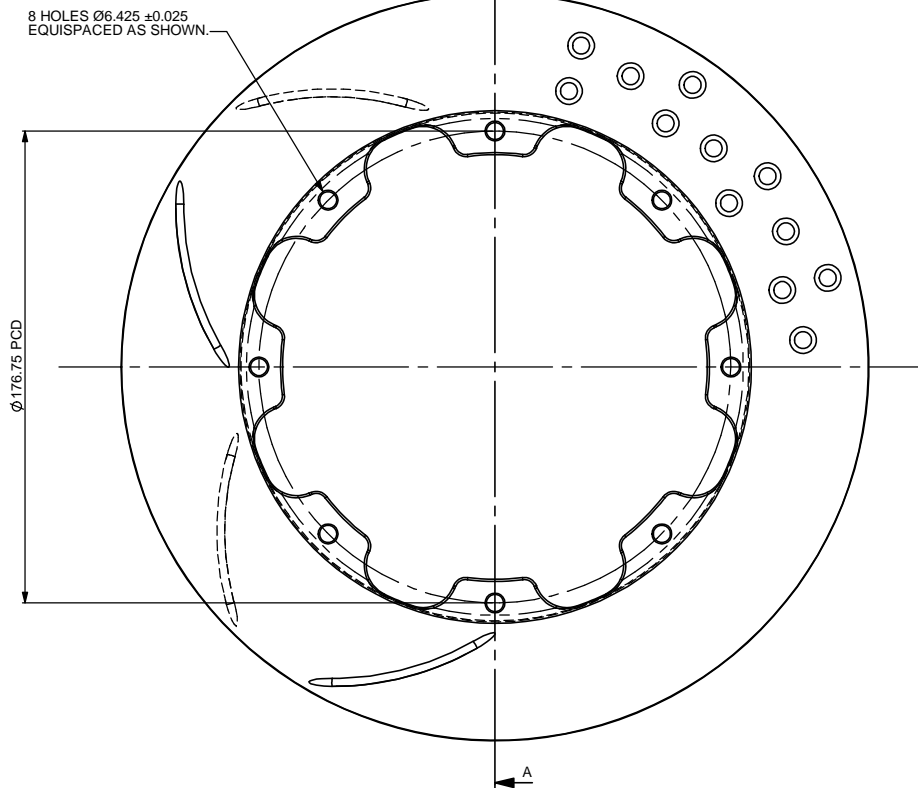
DISC INSTALLATION (FOR DISCS WITH GROOVES)



DISC ROTATION



A-A



8 HOLES Ø6.425 ±0.025
EQUISPACED AS SHOWN.

Ø176.75 PCD

Issue No.	Date & No.	Alterations	
		Particulars	Zone Initials
1	01/04/03 B3626	FIRST ISSUE	SAT
2	10/04/03 B3638	DIRECTION OF GROOVES REVERSED ON ONE SIDE	1L SAT
3	19/01/11 B4460	CONVERTED TO TWIN TURNING	SAT

SCALE 1:1		SHEET 1 OF 1	
DRAWN	Steve Thomas		
APPROVED			
DERIVED FROM	CP2866-177		
TITLE			
SOLID DISC			
Ø280 x 9.60			
DRG NO.	CP5000-177		