

A1 INSTALLATION DRAWING

IF THIS DOCUMENT IS PRINTED IN HARDCOPY, IT IS FOR INFORMATION USE ONLY AND THEREFORE IS NOT SUBJECT TO UPDATING CONTROLS. ALWAYS REFER TO SOLIDWORKS VIEWER FOR LATEST ISSUE

FIRST ANGLE PROJECTION

THIS DRAWING IS CONFIDENTIAL AND IS SUPPLIED ON THE EXPRESS CONDITION THAT IT SHALL NOT BE LOANED OR COPIED OR DISCLOSED TO ANY OTHER PERSON OR USED FOR ANY OTHER PURPOSE WITHOUT THE WRITTEN CONSENT OF AP RACING LTD.



AP Racing
Wheler Road
Coventry
CV3 4LB

Tel: +44 (0) 24 7663 9595
Fax: +44 (0) 24 7663 9559
e-mail: engineering@apracings.com
Web site: http://www.apracings.com

© AP Racing Ltd. 2005

SUFFIX TO DISC PART NUMBERS:

- P PLAIN, NO GROOVES
- CGnn nn CURVED GROOVES
- CRnn nn CURVED GROOVES BREAKING THROUGH OUTSIDE DIAMETER.
- RA SETS OF 2 'J HOOK' GROOVES. NUMBER OF SETS IS EQUAL TO NUMBER OF MOUNTINGS.

SEE FIGURES 1 TO 3 FOR EXAMPLES OF THE GROOVE PATTERNS AVAILABLE.

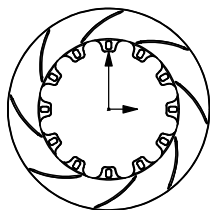


FIG.1: CG8

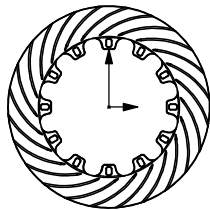


FIG.2: CR24

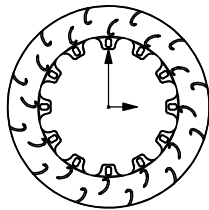
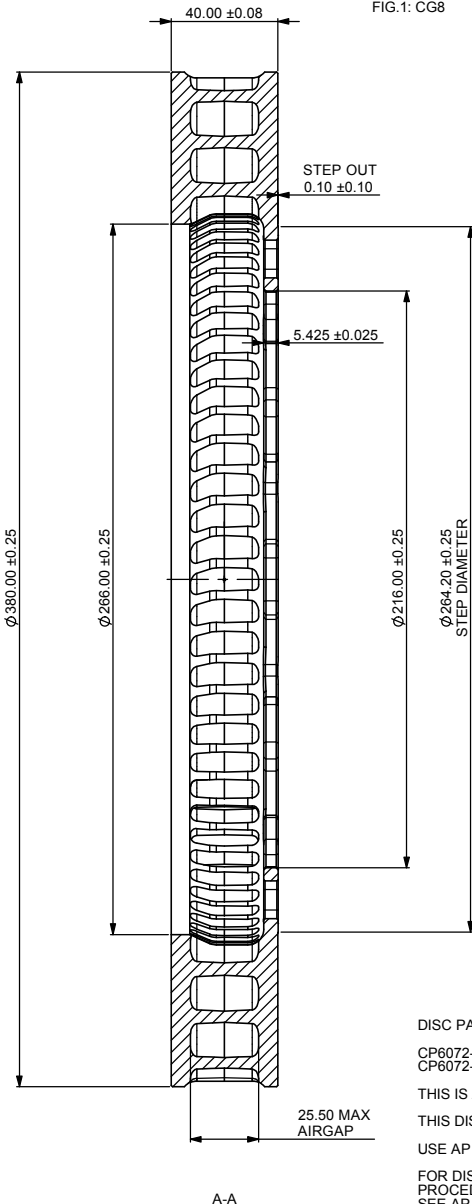
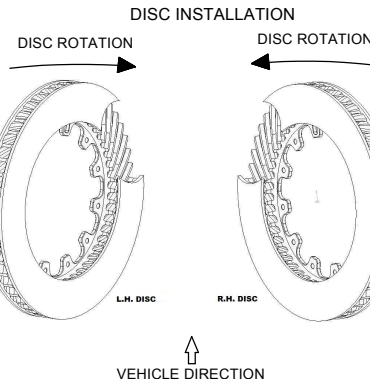
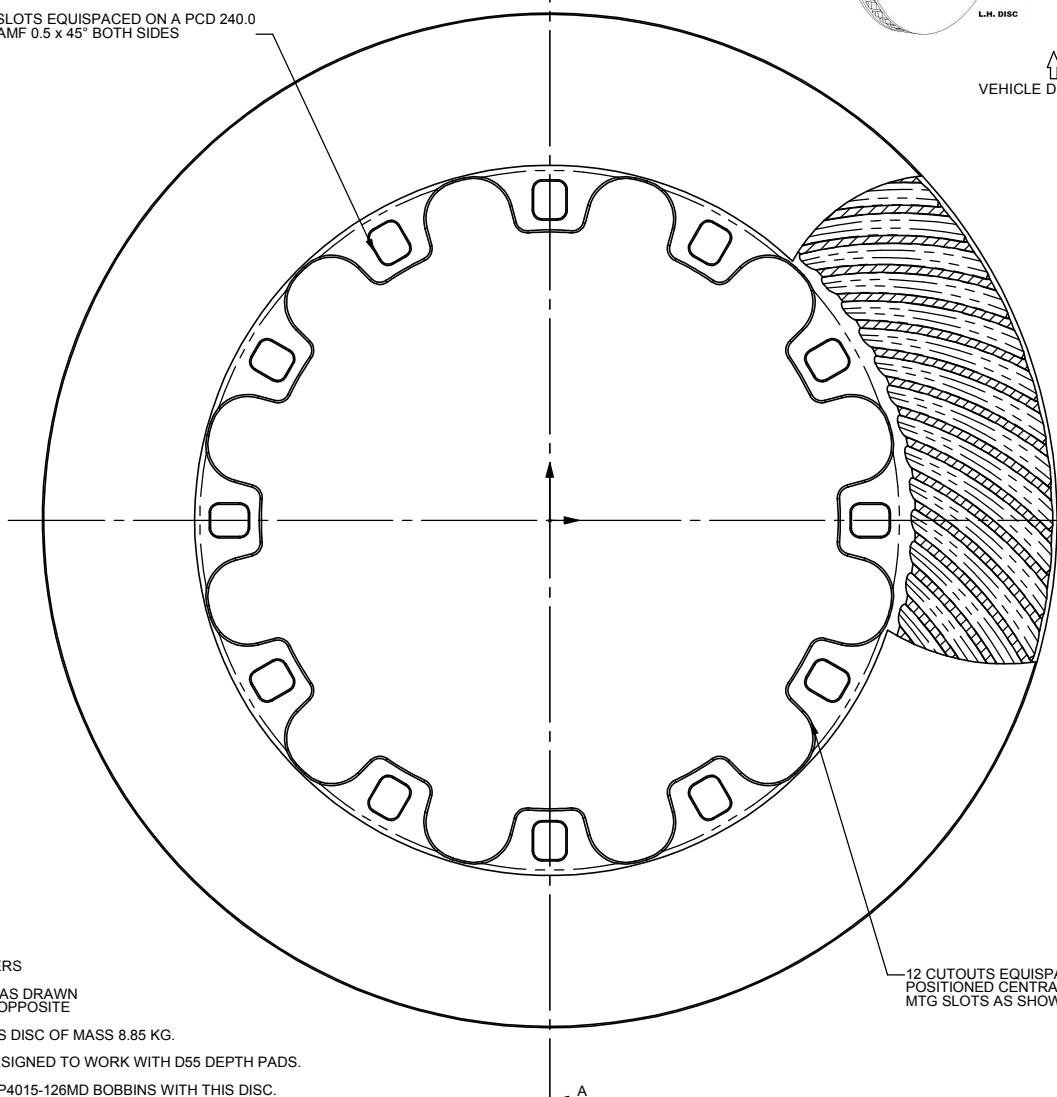


FIG.3: RA

DISC ROTATION



12 SLOTS EQUISPACED ON A PCD 240.0
CHAMF 0.5 x 45° BOTH SIDES



DISC PART NUMBERS

- CP6072-102 RH AS DRAWN
- CP6072-103 LH OPPOSITE

THIS IS A 72 VANES DISC OF MASS 8.85 KG.

THIS DISC WAS DESIGNED TO WORK WITH D55 DEPTH PADS.

USE AP RACING CP4015-126MD BOBBINS WITH THIS DISC.

FOR DISC MOUNTING TECHNIQUES, BEDDING PROCEDURE AND DISC COOLING RECOMMENDATIONS SEE AP RACING BRAKE DISC CATALOGUE.

Alterations				
Issue No.	Date & No.	Particulars	Zone	Initials
1	12/11/03	FIRST ISSUE		GM
2	21/04/04	BOBBIN NUMBER NOTE ADDED		GM
3	06/05/04	MOUNTING FLANGE 5.45/5.40 WAS 5.65/5.60 AMD BOBBINS CP4015-126MD WERE CP4015-126MJ	G3	GM
4	01/08/08 B4460 :ID110	0.20 / 0.00 STEP OUT ADDED Ø264.2 STEP DIA ADDED	#	DRA

SCALE 1:1	SHEET 1 OF 1
DRAWN	D.ARROWSMITH
APPROVED	
DERIVED FROM	
TITLE	
VENTED DISC	
Ø380 x 40 - 72 VANES	
DRG NO.	CP6072-102 / 103 CD