

A1 INSTALLATION DRAWING

IF THIS DOCUMENT IS PRINTED IN HARDCOPY, IT IS FOR INFORMATION USE ONLY AND THEREFORE IS NOT SUBJECT TO UPDATING CONTROLS. ALWAYS REFER TO SOLIDWORKS VIEWER FOR LATEST ISSUE



THIS DRAWING IS CONFIDENTIAL AND IS SUPPLIED ON THE EXPRESS CONDITION THAT IT SHALL NOT BE LOANED OR COPIED OR DISCLOSED TO ANY OTHER PERSON OR USED FOR ANY OTHER PURPOSE WITHOUT THE WRITTEN CONSENT OF AP RACING LTD.

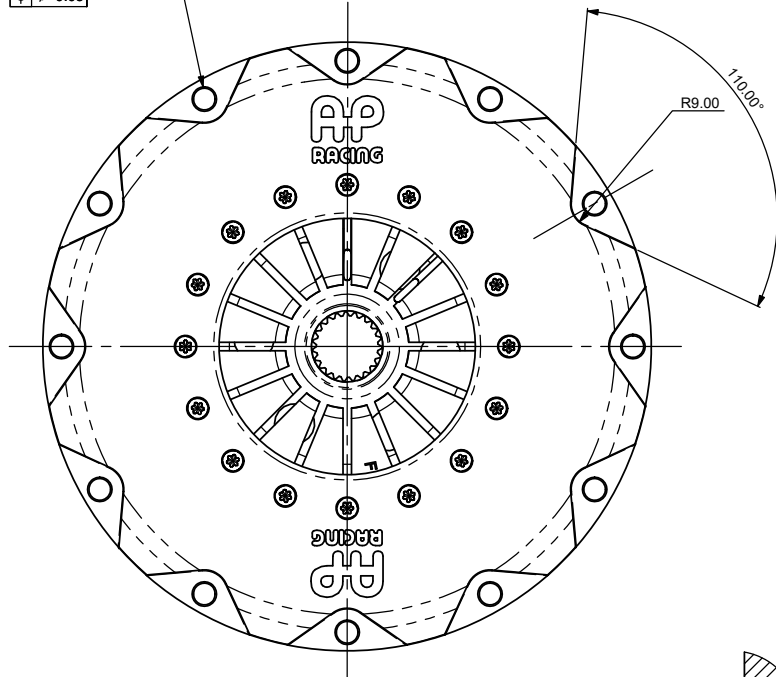


AP Racing
Wheler Road
Coventry
CV3 4LB

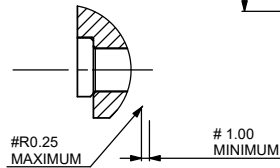
Tel: +44 (0) 24 7663 9595
Fax: +44 (0) 24 7663 9556
e-mail: engineering@apracings.com
Web site: <http://www.apracings.com>

© AP Racing Ltd. 2005

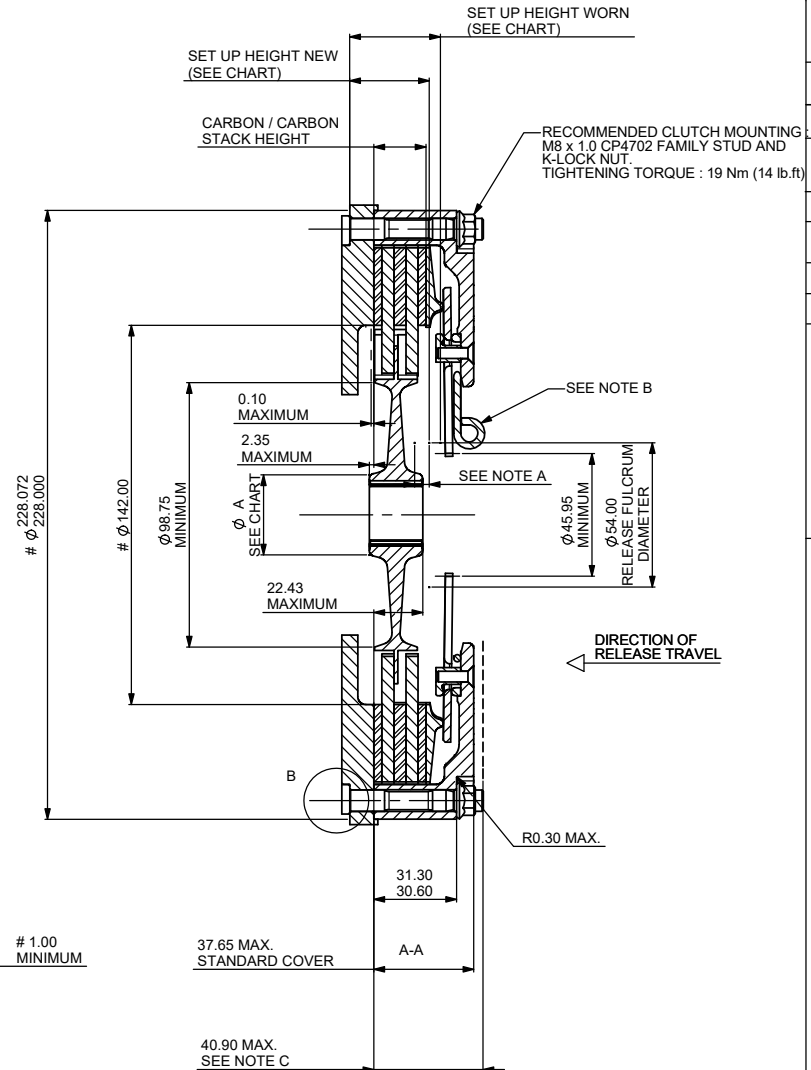
12 MOUNTING HOLES Ø8.15/8.05
EQUI-SPACED AS SHOWN ON A
Ø214.00 P.C.
⊕ ⊖ 0.05



THIS 2 PLATE CARBON / CARBON CLUTCH IS INTERCHANGEABLE WITH CP3921-4GRY A Ø200mm SINGLE PLATE CERAMETALIC CLUTCH ASSEMBLY.



DETAIL B
SCALE 2:1



NOTE A:
RELEASE TRAVEL TO BE LIMITED TO 5.50mm MAXIMUM.

NOTE B:
INSTALLATION WIRE FOR USE WHEN INSTALLING CLUTCH TO ENSURE FLYWHEEL SIDE CARBON PLATE IS LOCATED ON THE COVER LUGS.

THIS WIRE MUST BE REMOVED BEFORE USE.

- FLYWHEEL DIMENSIONS.
ALTERNATIVE CLUTCH MOUNTING: CAP HEAD BOLT (BORED TREAD) TIGHTENING TORQUE 22.0 Nm (16 lb ft)

CLUTCH PART No. SUFFIX	CP7212-CH01-FN	CP7212-CE01-FN SEE NOTE D
MAXIMUM DYNAMIC TORQUE CAPACITY Nm (lb/ft)	700 (522)	911 (671)
MAXIMUM WEAR IN #	1.00	0.50
RELEASE LOAD (MAX PEAK WORN) N	4400	4400
RELEASE LOAD (MAX PEAK NEW) N	3500	3500
SET UP HEIGHT NEW	30.70 28.97	31.09 29.07
SET UP HEIGHT WORN	34.15	33.31

THIS CLUTCH HAS BEEN DESIGNED FOR THE WEAR IN INDICATED, WHICH MUST BE COMPENSATED FOR BY USING PRESSURE PLATES FROM EITHER OF THE KITS DETAILED BELOW. MAXIMUM CARBON STACK WEAR IS 6.00mm
AXIAL HUB FLOAT MUST BE MAINTAINED

PRESSURE PLATE KIT (STEEL)		
STANDARD	CP4212-4S (1.00 TO 5.00, 1.00 STEPS)	CP4222-7S (0.75 - 5.25, 0.75 STEPS)
INTERMEDIATE	CP4212-5S (0.50 - 4.50, 1.00 STEPS)	CP4222-5S (0.25 - 5.00, 0.25 STEPS)

HUB DETAILS		
HUB PART No.	SPLINE DETAIL	ØA' MAX
CP4202-122	1.00" x 23	30.25
CP4202-127	0.875" x 20	27.25
CP4202-128	29.0 x 10	34.25
CP4202-148	24.0 x 22	30.25

HUBS ARE AVAILABLE WITH OTHER SPLINE SIZES.

ASSEMBLY MASS AND INERTIA		
ASSEMBLY MASS (kg)	ASSEMBLY INERTIA (kgm ²)	DRIVEN PLATES & HUB INERTIA (kgm ²)
2.94	0.01903	0.003126

BASED ON ASSEMBLY CP7212SALHT (HIGHEST MASS AND INERTIA IN THIS FAMILY), WITH A STEEL HUB. OTHER VALUES AVAILABLE UPON REQUEST.

NOTE D:
THIS ASSEMBLY IS AVAILABLE WITH A STEEL COVER. THE PART No. FOR THIS ASSEMBLY IS CP7212-CE13-FN. ASSEMBLY WEIGHT = 4.29 kg. ASSEMBLY INERTIA = 0.03243 kgm². ALL OTHER INSTALLATION DETAILS AS CP7212-CE01-FN

Issue No.	Alterations			Zone	Initials
	Date & No.	Particulars			
1	24/09/01 C1903	FIRST ISSUE	#	JG	
2	10/03/03	CP7212-CL01-FN AND CP7212-CH01-FN DELETED. CP7212-CL01-FN AND CP7212-CH01-FN ADDED.	#	JG	
3	12/05/05 C2678	CP7212-CE01-FN ADDED.	#	JG	
4	18/07/06 C2939	110° WAS 45° (x2) R0.30 MAX WAS R1.75 MAX. 31.30/30.60 WAS 31.75 MAX.	#	K7 E13 E11	
5	07/11/06 C3008	'TH' SPEC AND NOTE C ADDED.	#	JG	
6	17/12/12	NOTE 'D' ADDED CONTAINING DETAILS OF CP7212-CE13-FN	#	JG	
7	27/02/17 RAC22221	CL01-FN & TH01-FN CLUTCHES REMOVED. CH01-FN 'SET UP HEIGHT NEW' CHANGED FROM 30.63 - 28.96 TO 30.70 - 28.97MM. CH01-FN 'SET UP HEIGHT WORN' CHANGED FROM 33.94 TO 34.15MM. CE01-FN 'WEAR IN' CHANGED FROM 0.75 TO 0.50MM. CE01-FN 'SET UP HEIGHT NEW' CHANGED FROM 30.78 - 28.81 TO 31.09 - 29.07MM. CE01-FN 'SET UP HEIGHT WORN' CHANGED FROM 34.19 TO 33.31MM.	#	WJB	
8	17/08/21 C5375_01	'MAX PEAK NEW' WAS 'AT TRAVEL'. 'MAX PEAK WORN' AND 'MAX PEAK NEW' VALUES CORRECTED TO CONFORM WITH MIS1000 'N' WAS 'daN'	#	JRV C1	

SCALE 1:1 SHEET 1 OF 1

DRAWN: Jeremy Govan

APPROVED:

DERIVED FROM:

TITLE
Ø200mm CARBON / CARBON
2 PLATE CLUTCH INSTALLATION

DRG NO. CP7212CD