

# A0 INSTALLATION DRAWING

IF THIS DOCUMENT IS PRINTED IN HARD COPY, IT IS FOR INFORMATION USE ONLY AND THEREFORE IS NOT SUBJECT TO UPDATING CONTROLS. ALWAYS REFER TO SOLIDWORKS VIEWER FOR LATEST ISSUE



THIS DRAWING IS CONFIDENTIAL AND IS SUPPLIED ON THE EXPRESS CONDITION THAT IT SHALL NOT BE LOANED OR COPIED OR DISCLOSED TO ANY OTHER PERSON OR USED FOR ANY OTHER PURPOSE WITHOUT THE WRITTEN CONSENT OF AP RACING LTD.

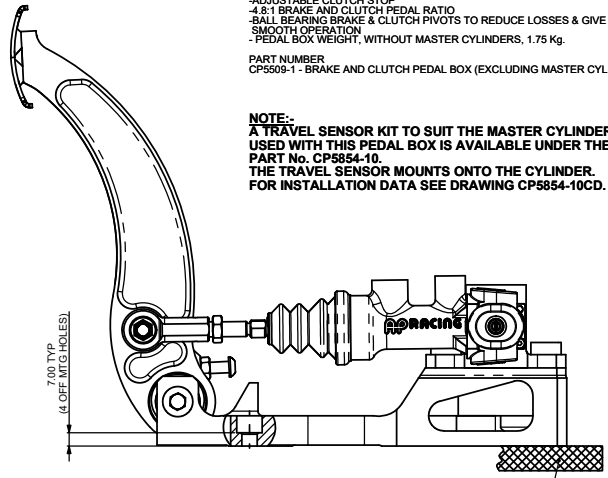
**AP Racing**  
 Wheeler Road  
 Coventry  
 CV3 4LB  
 Tel: +44 (0)24 7663 9595  
 Fax: +44 (0)24 7663 9559  
 e-mail: sales@apracings.co.uk  
 © AP Racing Ltd. 2005 Web site: HTTP://www.apracings.com

**GENERAL DESCRIPTION**  
 THIS A GENERAL PURPOSE FLOOR MOUNTED PEDAL BOX WITH FORWARD FACING PUSH TYPE MASTER CYLINDERS.

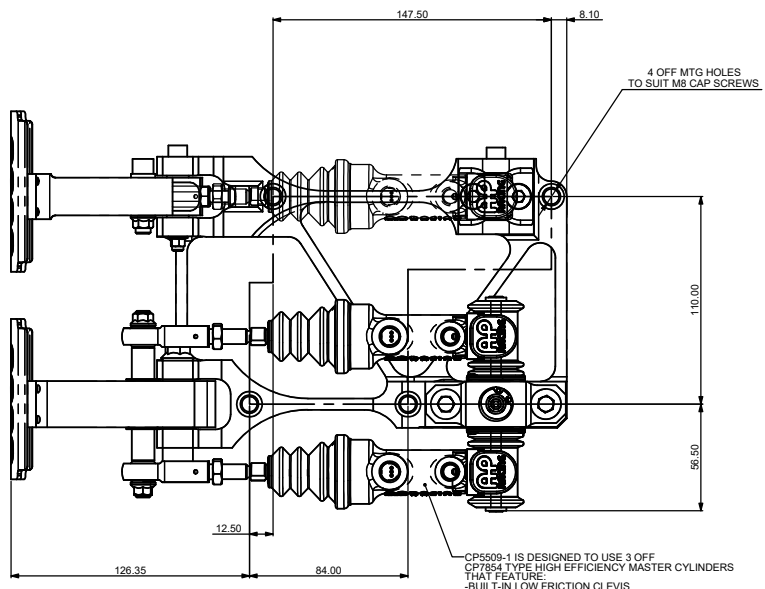
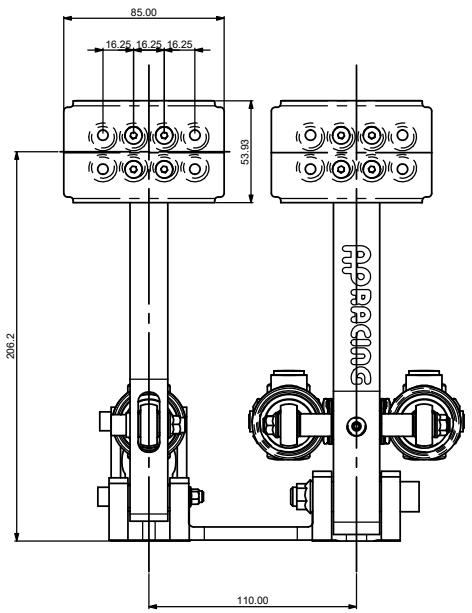
- FEATURES**
- LIGHTWEIGHT ALUMINIUM BILLET BASE
  - DESIGNED FOR USE WITH CP7854 TYPE MASTER CYLINDERS SEE CP7854-10CD FOR MASTER CYLINDER DETAILS
  - ADJUSTABLE FOOT PADS FOR OPTIMUM DRIVER COMFORT
  - ADJUSTABLE CLUTCH STOP
  - 4.8:1 BRAKE AND CLUTCH PEDAL RATIO
  - BALL BEARING BRAKE & CLUTCH PIVOTS TO REDUCE LOSSES & GIVE SMOOTH OPERATION
  - PEDAL BOX WEIGHT, WITHOUT MASTER CYLINDERS, 1.75 Kg.

**PART NUMBER**  
 CP5509-1 - BRAKE AND CLUTCH PEDAL BOX (EXCLUDING MASTER CYLINDERS)

**NOTE:-**  
 A TRAVEL SENSOR KIT TO SUIT THE MASTER CYLINDERS USED WITH THIS PEDAL BOX IS AVAILABLE UNDER THE PART No. CP5854-10.  
 THE TRAVEL SENSOR MOUNTS ONTO THE CYLINDER. FOR INSTALLATION DATA SEE DRAWING CP5854-10CD.



IN ADDITION TO SUPPORTING THE PEDAL BOX UNDERNEATH THE FOUR MOUNTING HOLES, THE PEDAL BOX MUST BE FULLY SUPPORTED UNDERNEATH THE BALANCE BAR HOUSING AS SHOWN



4 OFF MTG HOLES TO SUIT M8 CAP SCREWS

CP5509-1 IS DESIGNED TO USE 3 OFF CP7854 TYPE HIGH EFFICIENCY MASTER CYLINDERS THAT FEATURE:

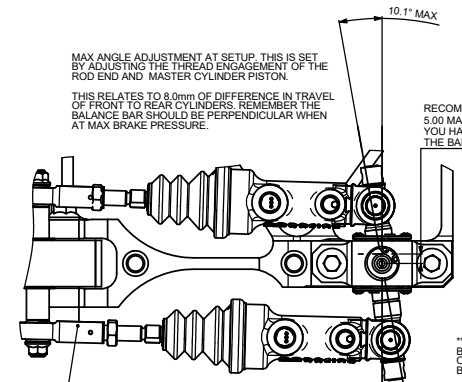
- BUILT-IN LOW FRICTION CLEVIS
- 7/16"x20 UNF INLET THREAD
- 3/8"x24 UNF OUTLET THREAD
- VARIOUS SIZES AVAILABLE (MASTER CYLINDERS SOLD SEPARATELY)
- MINIMUM PIPE FOR INLET - 3"

**IMPORTANT BALANCE BAR LIFE INFORMATION - ABS APPLICATIONS**  
 IT IS RECOMMENDED THAT THE BALANCE BAR, CLIPS AND SNAP RINGS ARE REPLACED AFTER 15,000km OF USE IN HIGH PRESSURE ABS APPLICATIONS. SEE SHEET 3 FOR RELEVANT PART NUMBERS.

MAX ANGLE ADJUSTMENT AT SETUP. THIS IS SET BY ADJUSTING THE THREAD ENGAGEMENT OF THE ROD END AND MASTER CYLINDER PISTON.

THIS RELATES TO 8.0mm OF DIFFERENCE IN TRAVEL OF FRONT TO REAR CYLINDERS. REMEMBER THE BALANCE BAR SHOULD BE PERPENDICULAR WHEN AT MAX BRAKE PRESSURE.

RECOMMENDED ADJUSTMENT 5.00 MAX. THE MORE ADJUSTMENT YOU HAVE THE MORE INEFFICIENT THE BALANCE BAR BECOMES



**SETTING UP THE BALANCE BAR**

ADJUST THE PUSHRODS SO THAT THE BALANCE BAR IS PERPENDICULAR TO THE PUSHRODS UNDER MAXIMUM LOAD. THE SYSTEM IS THEN SQUARE. IT IS NOT IMPORTANT THAT THE SYSTEM IS SQUARE WHEN RELEASED, BUT IT HAS TO BE UNDER LOAD.

FOR MAXIMUM EFFICIENCY, IT IS RECOMMENDED THAT THE PEDAL IS AT RIGHT ANGLE WITH THE PUSHRODS UNDER MAXIMUM BRAKING LOAD, AND ALSO KEEPING THE BALANCE BAR CENTRAL WITH BETTER SELECTION OF MASTER CYLINDER SIZES HELPS REDUCE INEFFICIENCIES.

ALSO MAKE SURE THAT THE MASTER-CYLINDER PISTONS FULLY RETURN BEFORE USE. THIS CAN BE CHECKED BY FEELING THE PUSHRODS FOR SLIGHT MOVEMENTS THERE SHOULD NOT BE ANY EXCESSIVE LOOSE MOVEMENT.

8.00 MIN THREAD ENGAGEMENT - 16.00 MAX THREAD ENGAGEMENT (ALL DRAWING VIEWS SHOWN WITH MINIMUM 8.00 MIN THREAD ENGAGEMENT)

\*\*IMPORTANT NOTE: BRAKE PIPES MUST NOT RESTRICT THE OPERATION OR ADJUSTMENT OF THE BALANCE BAR\*\*

Rev	Date & No.	Particulars	Drawn	Checked
1	12/10/05 B4369	FIRST ISSUE	JH	JH
2	18/09/2007	NOTE REFERENCE AVAILABILITY OF TRAVEL SENSOR ADDED TO SHEET 1.	JH	DRA
3	20/03/08 B5140	SHEET 3 OMITTED REF 14 PARTS NOW SHOWN IN CHART. NEW REF. 15 & 16 PARTS ADDED TO CHART.	JH	DRA
4	24/09/09 B5656	WEIGHT ADDED.	JH	COA
5	17/11/09 B5732	MASTER CYLINDERS CHANGED TO CP7854 TYPE WERE CP5854.	JH	RLB
6	16/10/13 B8922_03	NEW BALANCE BAR ADDED CP5520-4	JH	JH
7	22/03/2019 B8047	SHEET 3 EXPLODED VIEW ALTERED TO IMPROVE CLARITY OF CLAMPING PLATE ASSEMBLY ORDER	JH	E14/JDD
8	26/03/2019 B8047_03	VARIOUS FIXES OF ANNOTATIONS AND TABLES	JH	JDD
9	14/07/22 B8281_01	SHEET 1 IMPORTANT BALANCE BAR LIFE INFORMATION NOTE ADDED	JH	H16/TS

SCALE 1:1 SHEET 1 OF 3

DRAWN *heritage*

APPROVED

DERIVED FROM

**TITLE**  
 FLOOR MTG PUSH TYPE  
 PEDAL BOX INSTALLATION

DRG NO. CP5509-1

# A0 INSTALLATION DRAWING

IF THIS DOCUMENT IS PRINTED IN HARD COPY, IT IS FOR INFORMATION USE ONLY AND THEREFORE IS NOT SUBJECT TO UPDATING CONTROLS. ALWAYS REFER TO SOLIDWORKS VIEWER FOR LATEST ISSUE



FIRST ANGLE PROJECTION

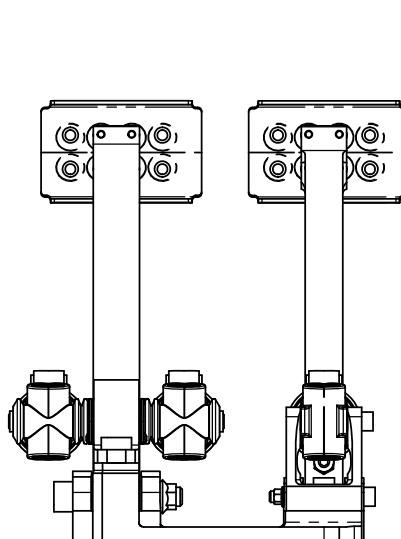
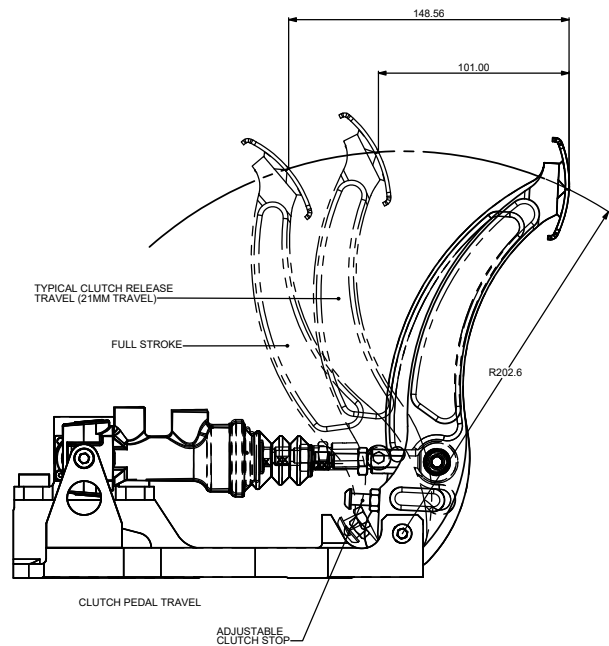
THIS DRAWING IS CONFIDENTIAL AND IS SUPPLIED ON THE EXPRESS CONDITION THAT IT SHALL NOT BE LOANED OR COPIED OR DISCLOSED TO ANY OTHER PERSON OR USED FOR ANY OTHER PURPOSE WITHOUT THE WRITTEN CONSENT OF AP RACING LTD.



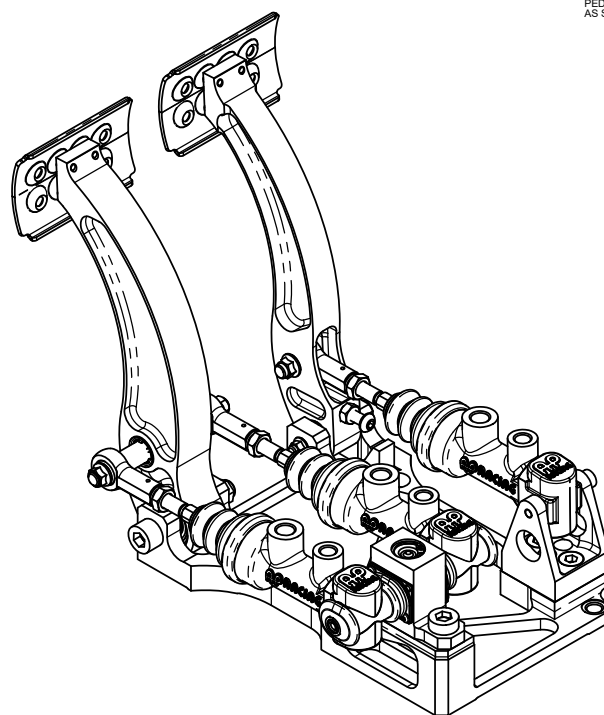
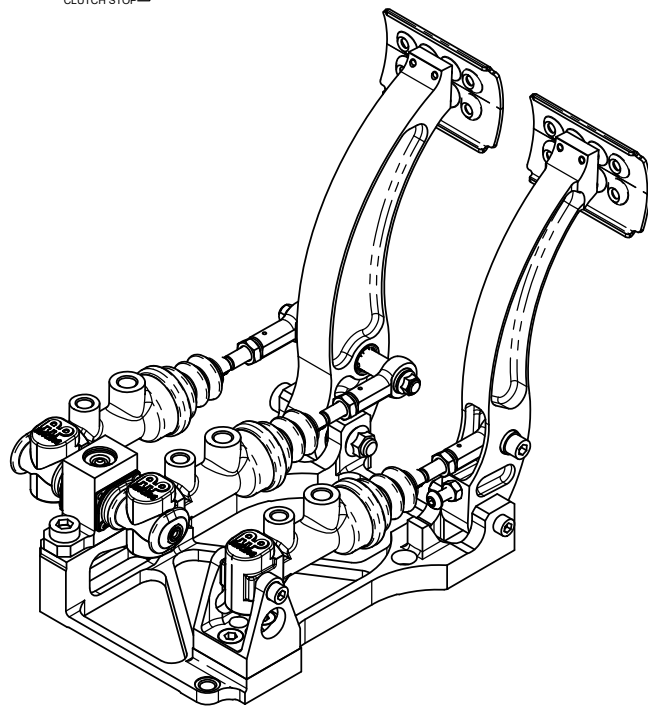
AP Racing  
Wheler Road  
Coventry  
CV3 4LB

Tel: +44 024 7663 9595  
Fax: +44 024 7663 9599  
e-mail: sales@apracings.co.uk

© AP Racing Ltd. 2005 Web site: HTTP://www.apracings.com



FOR OPTIMUM EFFICIENCY, THE PEDAL BOX SHOULD BE SET-UP SO THAT THE MASTER CYLINDER CENTRE LINE & PEDAL PIVOTS ARE SQUARE UNDER MAXIMUM BRAKE LOAD AS SHOWN



Alterations		Particulars	Drawn	Checked
Date	No.			
-	-	SEE SHEET 1 FOR ISSUE INFORMATION.		

SCALE 1:1	SHEET 2 OF 3
DRAWN heritage	
APPROVED	
DERIVED FROM	
TITLE	
FLOOR MTG PUSH TYPE	
PEDAL BOX INSTALLATION	
DRG NO.	CP5509-1

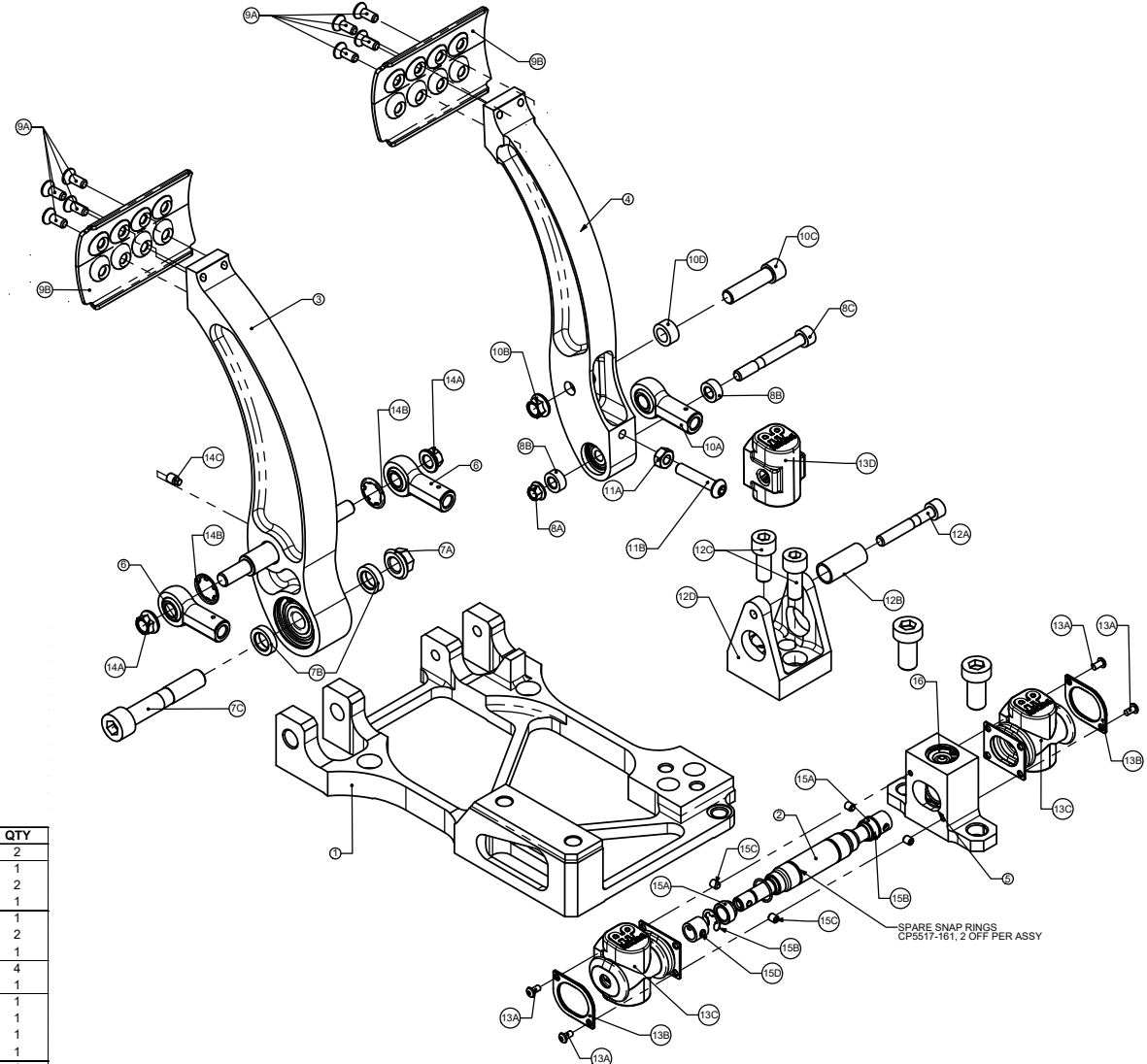
# A0 INSTALLATION DRAWING

IF THIS DOCUMENT IS PRINTED IN HARD COPY, IT IS FOR INFORMATION USE ONLY AND THEREFORE IS NOT SUBJECT TO UPDATING CONTROLS. ALWAYS REFER TO SOLIDWORKS VIEWER FOR LATEST ISSUE

FIRST ANGLE PROJECTION

THIS DRAWING IS CONFIDENTIAL AND IS SUPPLIED ON THE EXPRESS CONDITION THAT IT SHALL NOT BE LOANED OR COPIED OR DISCLOSED TO ANY OTHER PERSON OR USED FOR ANY OTHER PURPOSE WITHOUT THE WRITTEN CONSENT OF AP RACING LTD.

**AP RACING**  
 AP Racing  
 Wheeler Road  
 Coventry  
 CV3 4LB  
 Tel: +44 024 7663 9595  
 Fax: +44 024 7663 9559  
 e-mail: sales@aprac.com  
 © AP Racing Ltd. 2005  
 Web site: HTTP://www.aprac.com



**PARTS**

REF	PART NO.	DESCRIPTION
1	CP5509-101	BASEPLATE
2	CP5517-157	HEAVY DUTY BALANCE BAR

**SUB ASSEMBLIES**

REF	PART NO.	DESCRIPTION
3	CP5509-3	BRAKE PEDAL SUB ASSY (INCLUDES PUSH ROD, STAR WASHERS & GRUB SCREW)
4	CP5509-4	CLUTCH PEDAL SUB ASSY
5	CP5520-4	BALANCE BAR HOUSING SUB ASSY (INCL. INTERNALS)

**KITS**

REF	PART NO.	DESCRIPTION	SUFFIX	COMPONENT DESCRIPTION	QTY
6	CP5509-11	BRAKE ROD-END KIT	A	ROD END	2
7	CP5517-25	BRAKE PEDAL PIVOT KIT	A	NUT M10x1.50	1
			B	SPACER RING	2
			C	M10x1.50 CAP SCREW	1
8	CP5509-12	CLUTCH PEDAL PIVOT KIT	A	NUT M6x1.0	1
			B	SPACER RING	2
			C	M6x1.0 CAP SCREW	1
9	CP5509-5	FOOT PAD KIT	A	10-32UNF CSK SCREW	4
			B	FOOT PAD	1
10	CP5509-6	CLUTCH ROD-END KIT	A	ROD-END	1
			B	NUT	1
			C	CAP SCREW	1
			D	SLEEVE	1
11	CP5509-7	CLUTCH STOP KIT	A	M6x1.0 NUT	1
			B	M6x1.0 BUTTON SCREW	1
12	CP5509-8	CLUTCH MASTER CYLINDER MTG KIT	A	M6x1.0 CAP SCREW	1
			B	SLEEVE	1
			C	M8x1.25x20 CAP SCREW	2
			D	MTG BRACKET	1
13	CP5516-20	RUBBER BOOT KIT	A	M3x0.5 BUTTON SCREW	4
			B	CLAMPING PLATE	2
			C	RUBBER BOOT	2
			D	RUBBER BOOT	1
14	CP5509-10	PUSH BAR FIXING KIT	A	NUT	2
			B	STAR WASHER	2
			C	M5x0.8 GRUB SCREW	1
15	CP5517-30	BALANCE BAR EXTRAS KIT	A	BALANCE BAR SPACER	2
			B	CIRCLIP	2
			C	GRUB SCREW M4 x 5.0	4
			D	SLEEVE	2
16	CP5508-25	BALANCE BAR HSG INTERNALS KIT		CP5508-25 BALANCE BAR HSG INTERNALS KIT WILL ENABLE YOU TO REPLACE THE INTERNALS OF THE HOUSING AND COMPRISES 1 BARREL NUT, 2 BEARINGS AND 2 CIRCLIPS	

Alterations		Date & No.	Particulars	Drawn	Checked
9	10/22		SEE SHEET 1 FOR ISSUE INFORMATION.		

SCALE 1:1	SHEET 3 OF 3
DRAWN <i>perriage</i>	
APPROVED	
DERIVED FROM	
TITLE	
FLOOR MTG PUSH TYPE	
PEDAL BOX INSTALLATION	
DRG NO.	CP5509-1