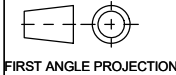


A2 INSTALLATION DRAWING

If this document is printed in hardcopy, it is for information use only and therefore is not subject to updating controls. Always refer to viewer for latest issue.



THIS DRAWING IS CONFIDENTIAL AND IS SUPPLIED ON THE EXPRESS CONDITION THAT IT SHALL NOT BE LOANED OR COPIED OR DISCLOSED TO ANY OTHER PERSON OR USED FOR ANY OTHER PURPOSE WITHOUT THE WRITTEN CONSENT OF AP RACING LTD.



© AP Racing Ltd. 2004

AP Racing
Wheler Road
Coventry
CV3 4LB

Tel: +44 024 7663 9595 e-mail: sales@apracing.co.uk
Fax: +44 024 7663 9559 Web site: HTTP://www.apracing.com

Issue No.	Date & No.	Alterations		Zone	Initials
		Particulars	#		
01	18/05/04 B3865	FIRST ISSUE			DRA
02	27/10/04 B3865	UNIVERSAL REPAIR KIT REFERENCED ON DRAWING			DRA
03	20/07/05 B3865	SECOND SHEET WITH EXPLODED VIEW AND SPARES LIST ADDED			DRA
04	10/05/2023 B8513_03	SHEET 1	176.5 WAS 176.7 19.5° WAS 19.2° 111.5 WAS 110.6 ADDED THREAD DEPTH ADDED REFILL NOTE		D8 D9 C10 G4 D1
		SHEET 2	CP2233-29 WAS CP2233-18		F7

M6 x 1.0
STUDS & NUTS

FLUID CAPACITY 50cc.
WHEN RE-FILLING RESERVOIR
REFORM INTERNAL BELLOWS
AS FLAT AS POSSIBLE PRIOR
TO RE-FITTING.

11.2 FULL
THREAD

OUTLET PORT
3/8" x 24 UNF

M6 x 1.0 PIVOT BOLT & NUT.
REMOVE ALL AXIAL SLACK
BUT DO NOT OVERTIGHTEN
OR LEVER WILL BE CLAMPED.

IF ANY IMPACT IS SUSTAINED ON THE LEVER,
HIGH PRESSURE MAY BE GENERATED IN THE
WHOLE BRAKING SYSTEM, WHICH WOULD
THEREFORE NEED TO BE REPLACED.

WHEN REFILLING RESERVOIR,
ENSURE BELLOWS IS
REFORMED AS SHOWN

10.00 MIN TO
REMOVE CAP

TO ENABLE REMOVAL AND RE-FITTING
OF PISTON, REMOVE THIS SCREW.
RE-FIT SCREW BEHIND PISTON LAND
AS SHOWN. DO NOT OVER TIGHTEN,
MAX TORQUE 1.0 NM. ENSURE PISTON
IS FREE TO TRAVEL.

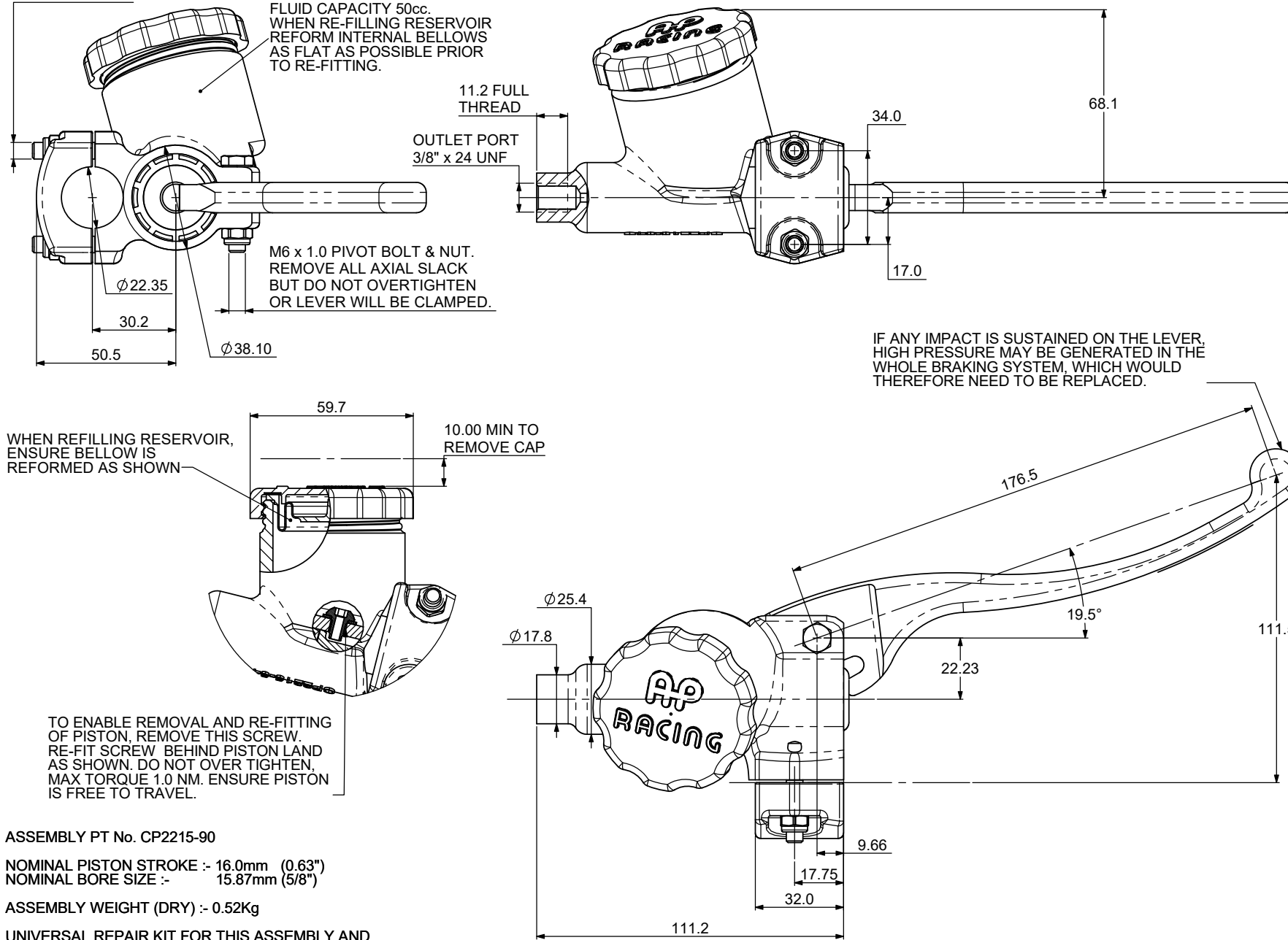
ASSEMBLY PT No. CP2215-90

NOMINAL PISTON STROKE :- 16.0mm (0.63")
NOMINAL BORE SIZE :- 15.87mm (5/8")

ASSEMBLY WEIGHT (DRY) :- 0.52Kg

UNIVERSAL REPAIR KIT FOR THIS ASSEMBLY AND
REAR MASTER CYLINDER CP2232-90 IS :- CP5678-1RK

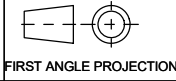
SEE SHEET 2 FOR EXPLODED VIEW AND FULL SPARES LIST



SCALE 1:1		SHEET 1 OF 2	
DRAWN	D.ARROWSMITH		
APPROVED			
DERIVED FROM			
TITLE INSTALLATION DRAWING HANDLE BAR MASTER CYLINDER			
DRG NO.	CP2215-100CD		

A2 INSTALLATION DRAWING

If this document is printed in hardcopy, it is for information use only and therefore is not subject to updating controls. Always refer to viewer for latest issue.



THIS DRAWING IS CONFIDENTIAL AND IS SUPPLIED ON THE EXPRESS CONDITION THAT IT SHALL NOT BE LOANED OR COPIED OR DISCLOSED TO ANY OTHER PERSON OR USED FOR ANY OTHER PURPOSE WITHOUT THE WRITTEN CONSENT OF AP RACING LTD.

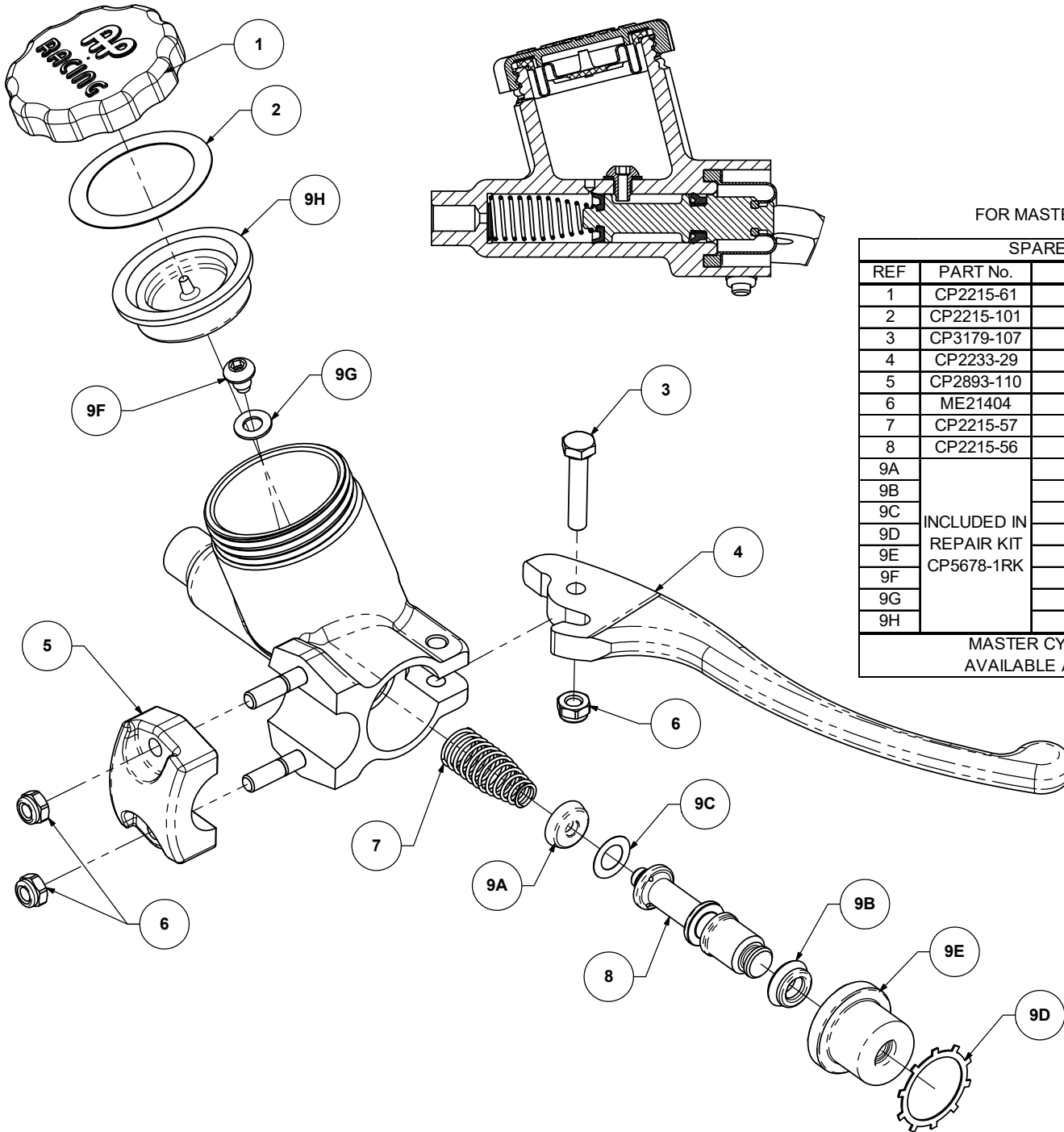


© AP Racing Ltd. 2004

AP Racing
Wheler Road
Coventry
CV3 4LB

Tel: +44 024 7663 9595 e-mail: sales@apracing.co.uk
Fax: +44 024 7663 9559 Web site: HTTP://www.apracing.com

Issue No.	Date & No.	Alterations		Zone	Initials
		Particulars			
-	-	SEE SHEET 1 FOR ISSUE INFORMATION.		-	-



SPARES

FOR MASTER CYLINDER CP2215-90

SPARE PARTS OR KITS			
REF	PART No.	DESCRIPTION	QTY
1	CP2215-61	CAP	1
2	CP2215-101	PAPER GASKET	1
3	CP3179-107	M6 BOLT	1
4	CP2233-29	LEVER	1
5	CP2893-110	CLAMP	1
6	ME21404	M6 NUT	3
7	CP2215-57	RETURN SPRING	1
8	CP2215-56	PISTON	1
9A	INCLUDED IN REPAIR KIT CP5678-1RK	PRIMARY SEAL	1
9B		SECONDARY SEAL	1
9C		PISTON WASHER	1
9D		CIRCLIP	1
9E		BOOT	1
9F		STOP SCREW	1
9G		WASHER	1
9H		BELLOWS	1

MASTER CYLINDER BODY IS NOT AVAILABLE AS A SEPARATE ITEM

SCALE 1:1	SHEET 2 OF 2
DRAWN	D.ARROWSMITH
APPROVED	
DERIVED FROM	
TITLE INSTALLATION DRAWING HANDLE BAR MASTER CYLINDER	
DRG NO.	CP2215-100CD