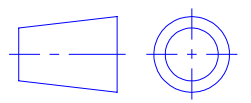


B1

INSTALLATION
DRAWING

IF THIS DOCUMENT IS PRINTED IN HARDCOPY,
IT IS FOR INFORMATION USE ONLY AND THEREFORE
IS NOT SUBJECT TO UPDATING CONTROLS. ALWAYS
REFER TO SOLIDWORKS VIEWER FOR LATEST ISSUE



FIRST ANGLE
PROJECTION

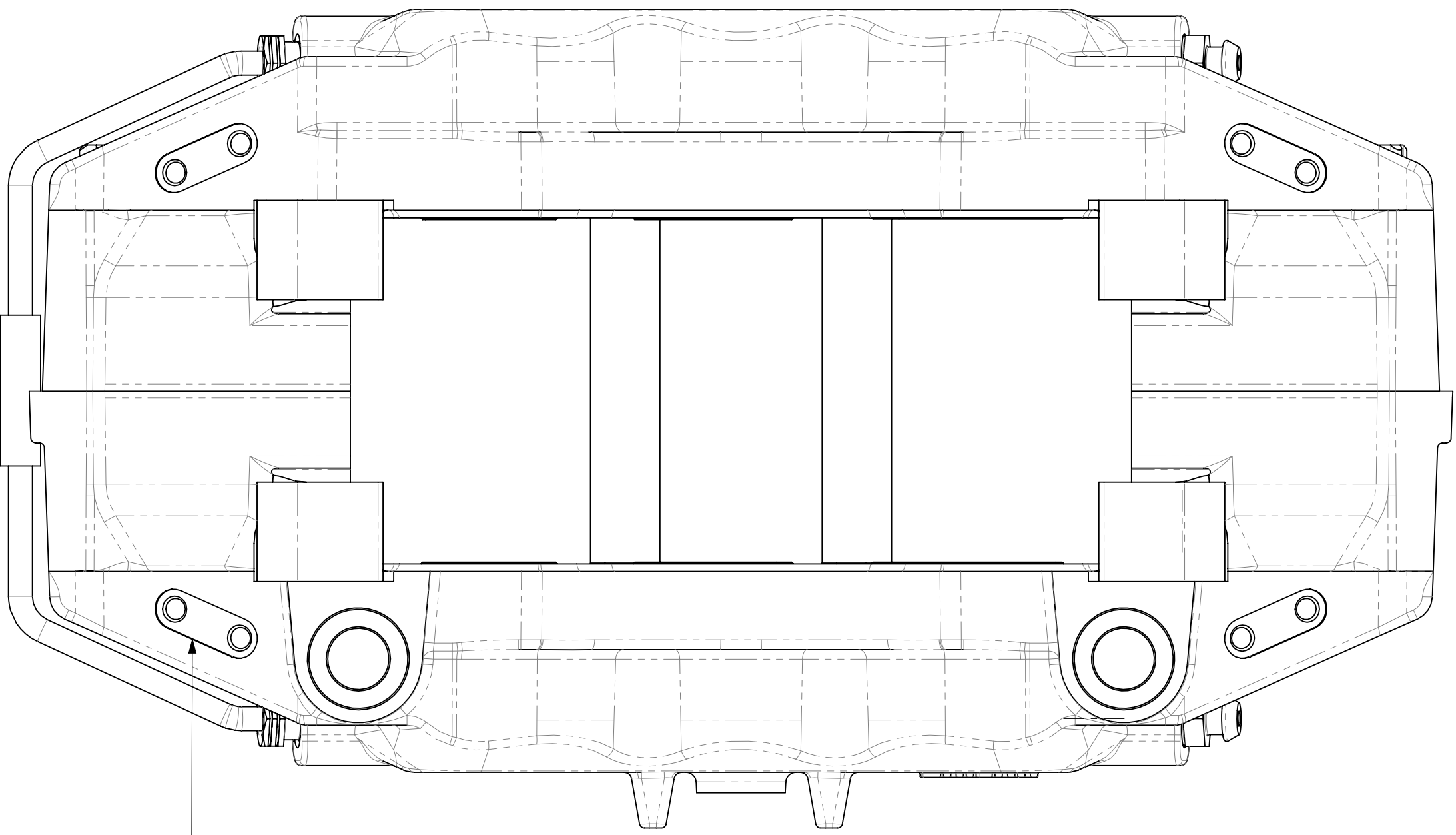
THIS DRAWING IS CONFIDENTIAL AND IS SUPPLIED ON THE EXPRESS CONDITION THAT
IT SHALL NOT BE LOANED OR COPIED OR DISCLOSED TO ANY OTHER PERSON OR USED
FOR ANY OTHER PURPOSE WITHOUT THE WRITTEN CONSENT OF AP RACING LTD.



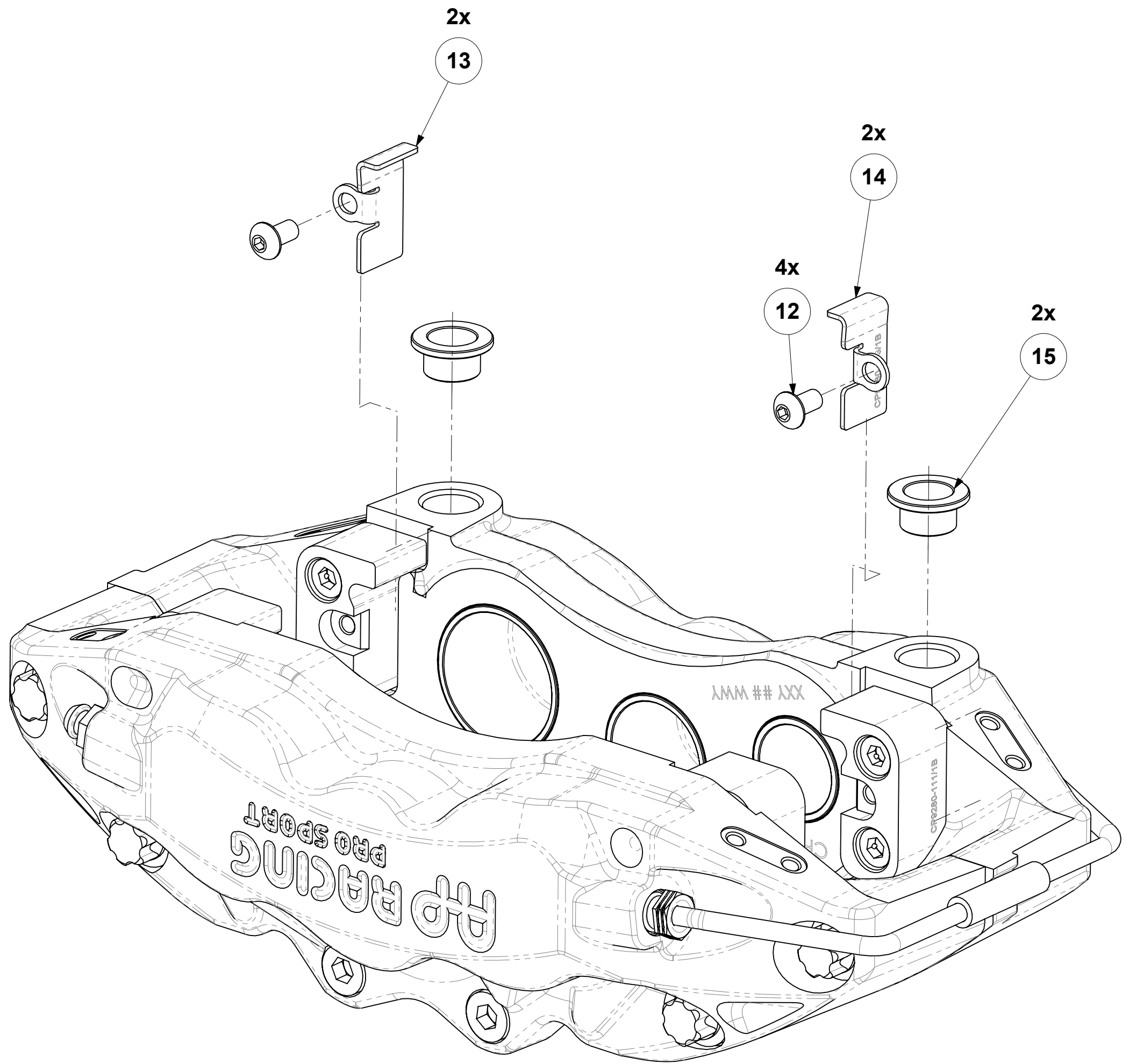
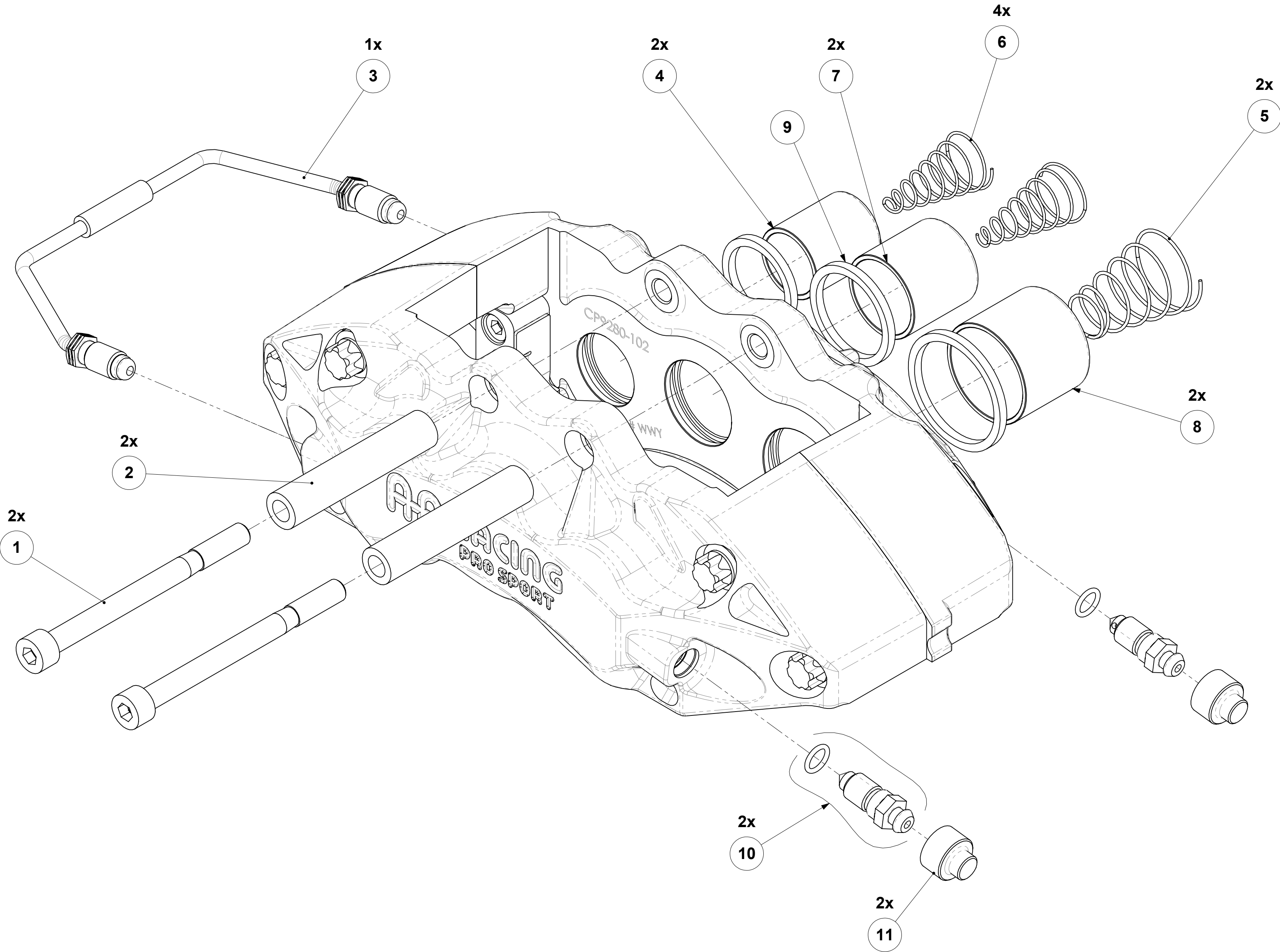
AP Racing
Wheler Road
Coventry
CV3 4LB
Tel: +44 024 7663 9595
Fax: +44 024 7663 9559
e-mail: sales@apracings.co.uk
Web site: [HTTP://www.apracings.com](http://www.apracings.com)

© AP Racing Ltd. 2025

REF	PART NUMBER	DESCRIPTION	QTY PER ASSEMBLY	FITTING INSTRUCTIONS
1	CP3894-139ST	PAD RETAINER SCREW M8 x 1.25 x 95	2	TIGHTENING TORQUE: 19Nm
2	CP9280-115	PAD RETAINER TUBE	2	
3	CP9040-10	PIPE ASSEMBLY	1	TIGHTENING TORQUE: 17Nm (EACH SIDE)
4	CP5260-109	Ø26.9 (1.06") SST PISTON	2	
5	CP2667-105	4lb ANTI-KNOCKBACK SPRING	2	
6	CP2632-113	4lb ANTI-KNOCKBACK SPRING	4	
7	CP5260-110	Ø31.75 (1.25") SST PISTON	2	
8	CP5260-111	Ø38.1 (1.5") SST PISTON	2	
9	CP4518-CEJ	SEAL KIT (6 SEALS)	1	REFER TO PUBLICATION REF: P14.290 & P14.220
10	CP3880-1	BLEED SCREW KIT	2	TIGHTENING TORQUE: 17Nm
11	CP4970-133	RUBBER BLEEDSCREW CAP	2	
12	CP9440-116ST	ABUTMENT PLATE SCREW M5 x 0.8 x 10	4	APPLY A 1-2mm DROP OF LOCTITE 270 TO THE 2nd FROM LAST THREAD WHEN FITTING. TIGHTENING TORQUE: 3.7Nm
13	CP9280-112	RH WEAR PLATE	2	APPLY A SMEAR OF 736 RTV SILICONE TO BACK OF WEAR PLATE AND APPLY PRESSURE TO ABUTMENT PLATE WHEN FITTING TO ENSURE MINIMUM FILM THICKNESS TO AVOID ANY GAPS. REMOVE EXCESS ONCE TIGHTENED DOWN.
14	CP9280-113	LH WEAR PLATE	2	
15	CP9280-116	MOUNTING BOSS	2	USE LOCTITE 648 WITH ACTIVATOR 7471



8x M5x0.8
BLEED SCREW PROTECTION MOUNTING HOLES



Issue No.	Alterations		Zone	Initials
	Date & No.	Particulars		

SEE SHEET 1 FOR ISSUE INFORMATION.

SCALE 1:1 SHEET 2 OF 3

DRAWN Szymon Polewko

APPROVED

DERIVED FROM CP9040-2

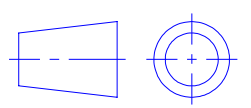
TITLE
RHT CALIPER ASSY

DRG NO. CP9280-1cd

B1

INSTALLATION
DRAWING

IF THIS DOCUMENT IS PRINTED IN HARDCOPY,
IT IS FOR INFORMATION USE ONLY AND THEREFORE
IS NOT SUBJECT TO UPDATING CONTROLS. ALWAYS
REFER TO SOLIDWORKS VIEWER FOR LATEST ISSUE



FIRST ANGLE
PROJECTION

THIS DRAWING IS CONFIDENTIAL AND IS SUPPLIED ON THE EXPRESS CONDITION THAT
IT SHALL NOT BE LOANED OR COPIED OR DISCLOSED TO ANY OTHER PERSON OR USED
FOR ANY OTHER PURPOSE WITHOUT THE WRITTEN CONSENT OF AP RACING LTD.



AP Racing
Wheler Road
Coventry
CV3 4LB
Tel: +44 024 7663 9595
Fax: +44 024 7663 9559
e-mail: sales@apracings.co.uk
Web site: [HTTP://www.apracings.com](http://www.apracings.com)

© AP Racing Ltd. 2025

Issue No.	Alterations		Zone	Initials
	Date & No.	Particulars		
-	-	SEE SHEET 1 FOR ISSUE INFORMATION.	-	-

SCALE 3:2 SHEET 3 OF 3

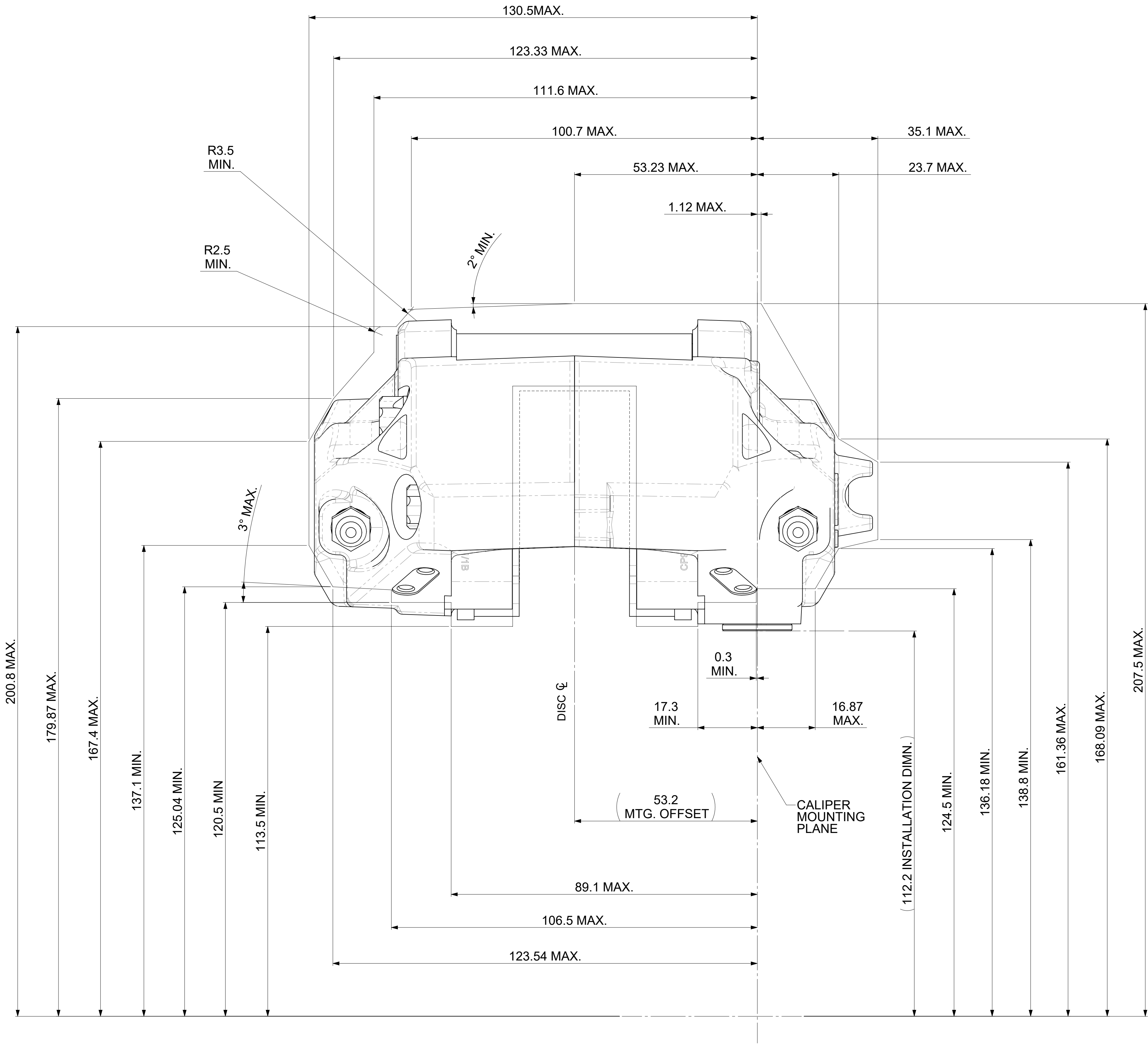
DRAWN Szymon Polewko

APPROVED

DERIVED FROM CP9040

TITLE
6-POT CALIPER INSTALLATION
DRAWING 362 x 32 MAX DISC

DRG NO. CP9280-1cd



RADIAL PROFILE FOR
Ø362 x 32 DISC