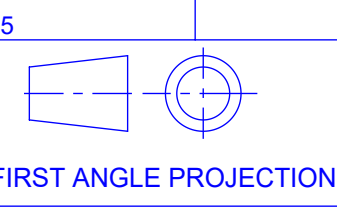


A2 INSTALLATION DRAWING

If this document is printed in hardcopy, it is for information use only and therefore is not subject to updating controls. Always refer to viewer for latest issue.



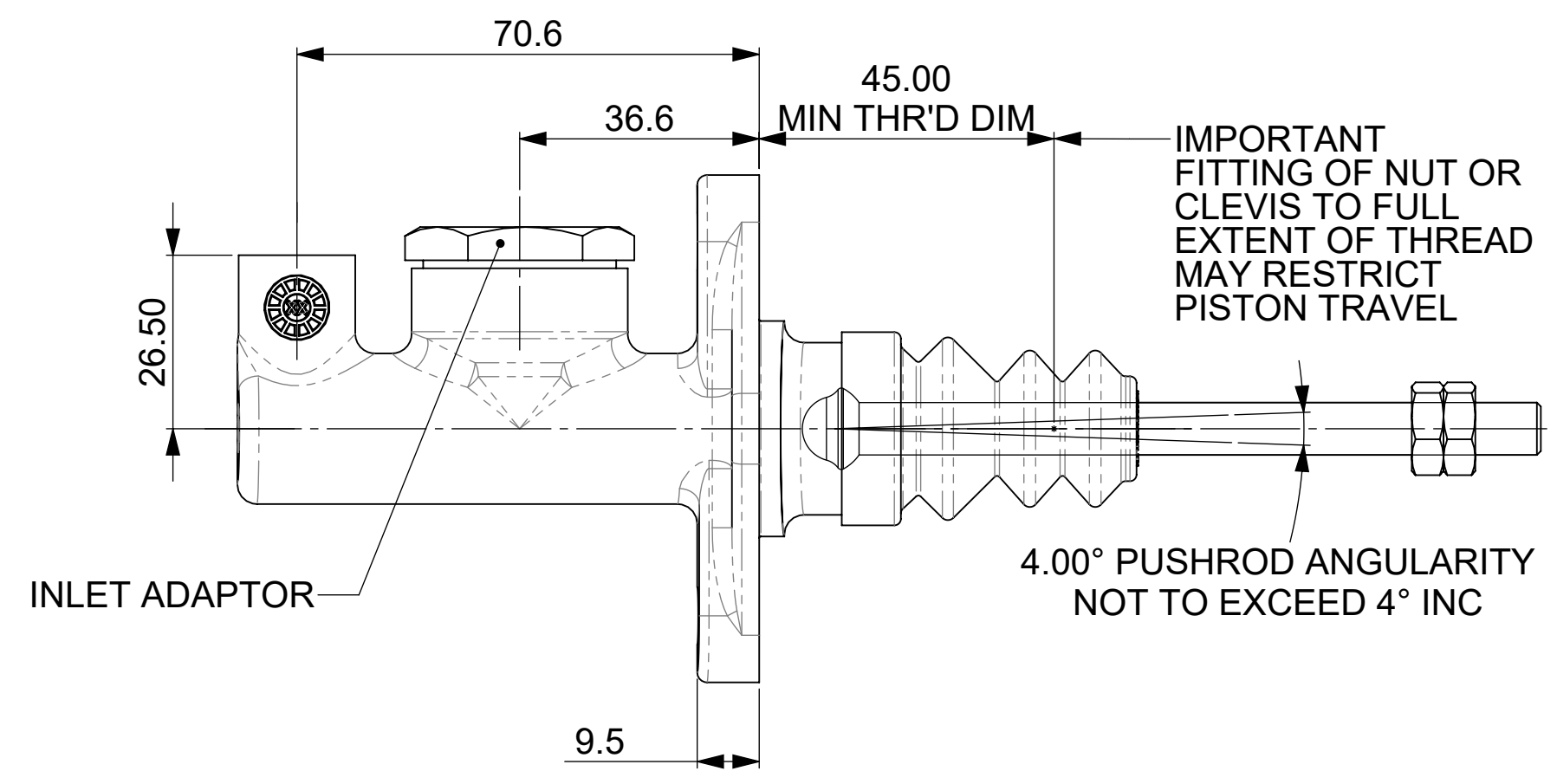
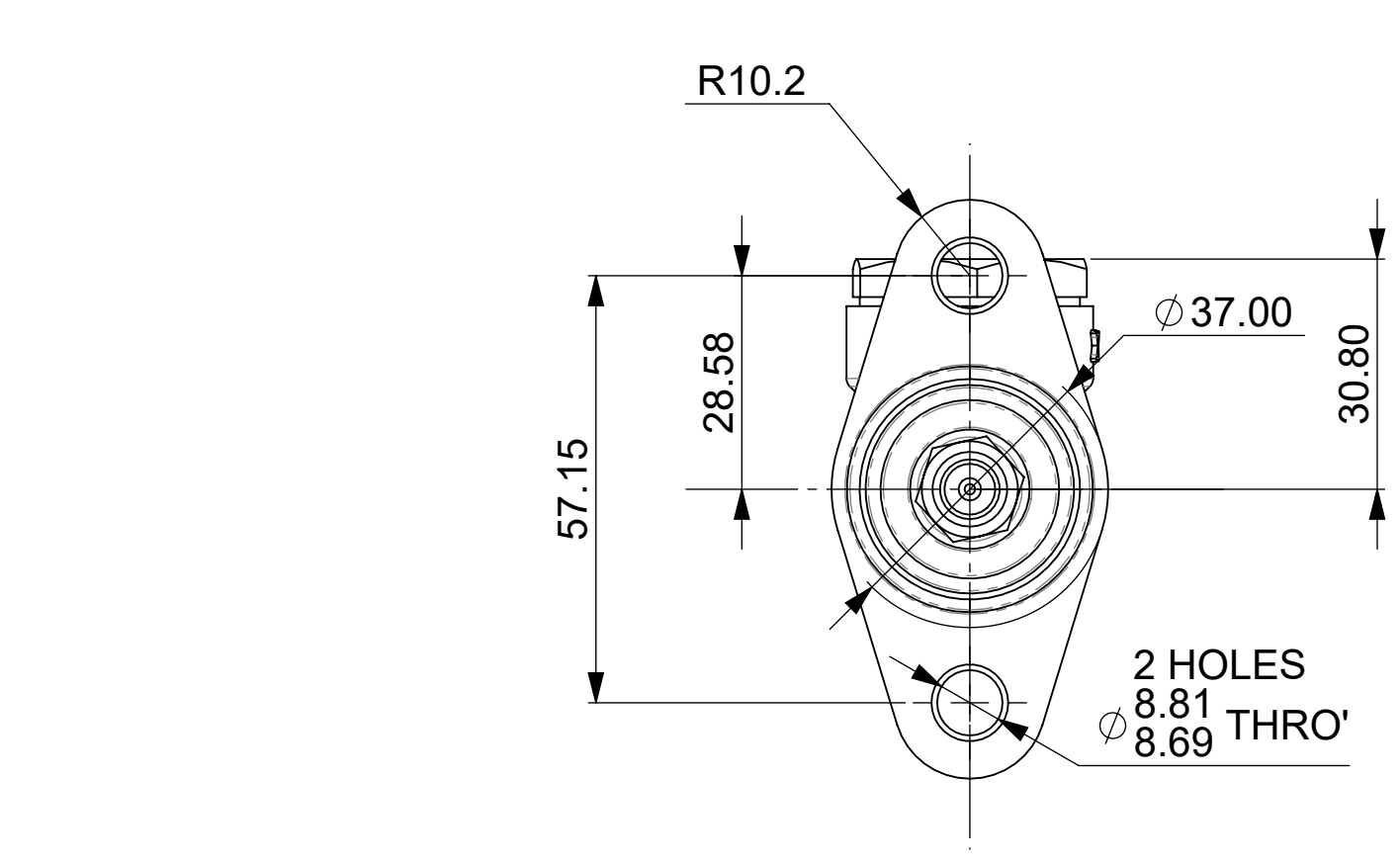
THIS DRAWING IS CONFIDENTIAL AND IS SUPPLIED ON THE EXPRESS CONDITION THAT IT SHALL NOT BE LOANED OR COPIED OR DISCLOSED TO ANY OTHER PERSON OR USED FOR ANY OTHER PURPOSE WITHOUT THE WRITTEN CONSENT OF AP RACING LTD.



AP Racing
Wheler Road
Coventry
CV3 4LB

Tel: +44 024 7663 9595
Fax: +44 024 7663 9559
e-mail: sales@ap racing.co.uk
Web site: <http://www.ap racing.com>

© AP Racing Ltd. 2025

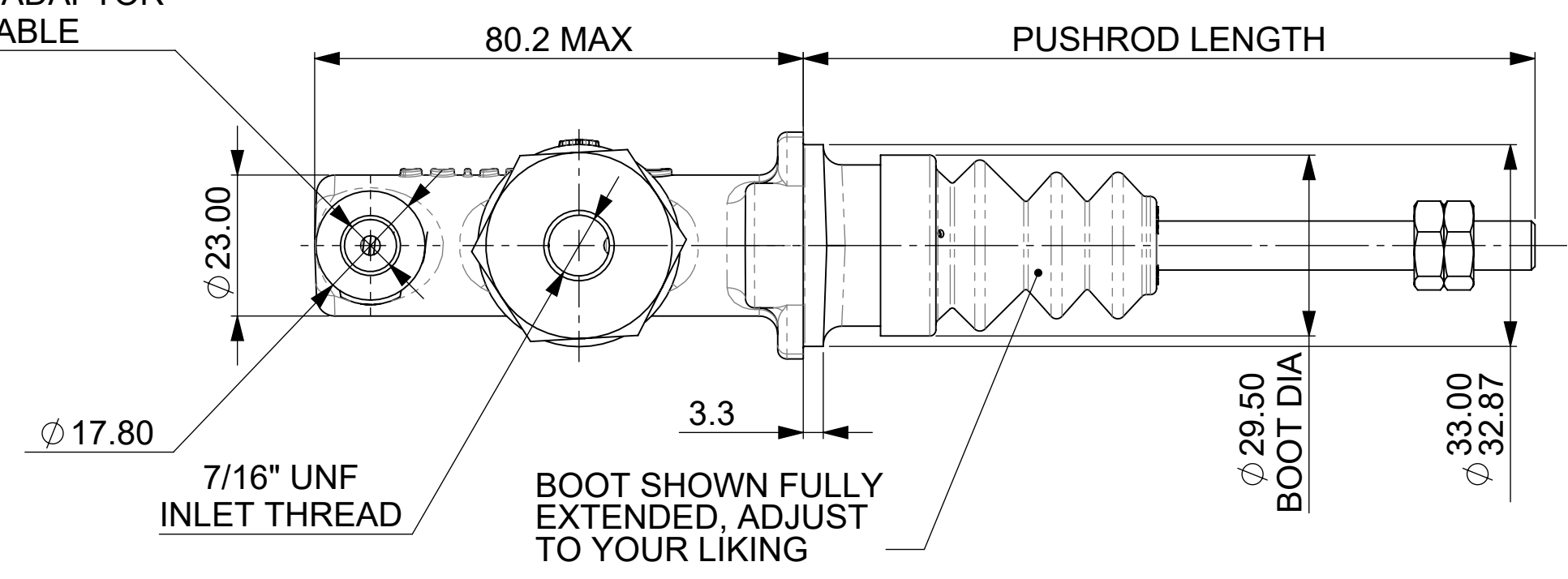


GENERAL DESCRIPTION:
LIGHT WEIGHT MASTER CYLINDER FOR USE IN ALL CAR APPLICATIONS. CP2623 MASTER CYLINDER IS SUPPLIED WITH 7/16" THREADED INLET

WEIGHT.....260g (0.573Lb)
FULL STROKE.....25.4 (1.0")
TRAVEL TO CUT-OFF SHORT.....0.68 TO 1.09 (0.027" TO 0.043")
BODY MATERIAL.....ALUMINIUM ALLOY
TYPICAL APPLICATIONS.....FOR USE IN ALL CARS

SEE SHEET 4 FOR PUSHROD DETAILS AND INLET OPTIONS

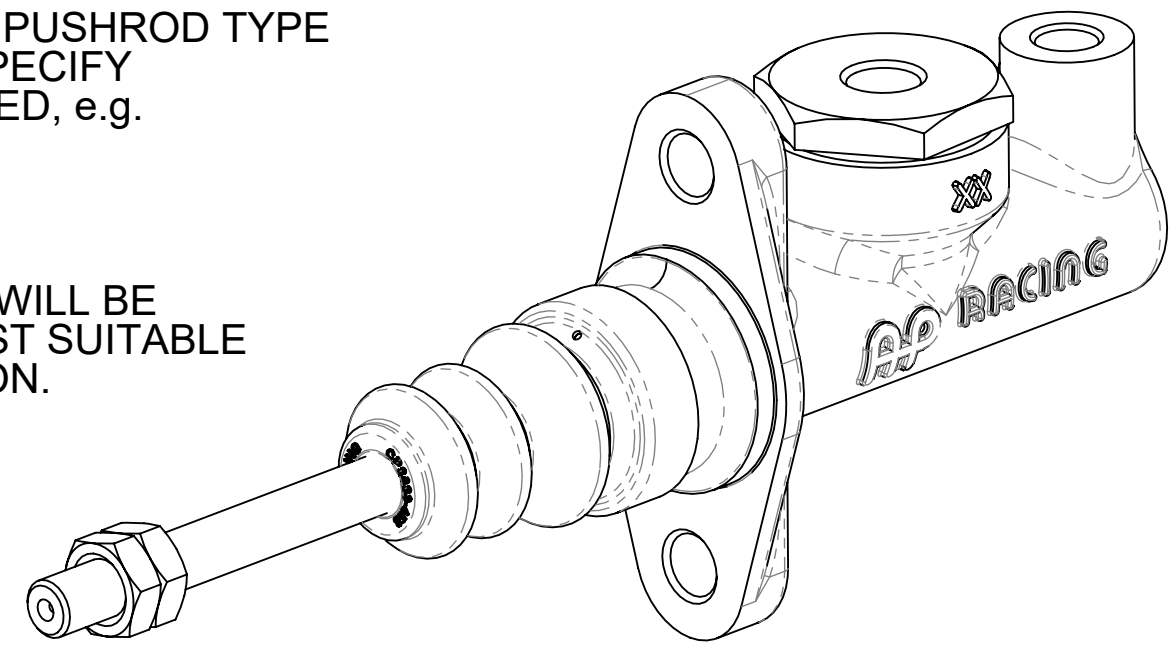
3/8" x 24 UNF OUTLET AEROQUIP ADAPTOR AVAILABLE



AVAILABLE SIZES OF CYLINDER				
PART NUMBER	BORE SIZE	SHEET No.	TIE WRAP	REPAIR KIT
CP2623-88	Ø14	SHEET 1	BLACK & ORANGE	CP2623-88RK
CP2623-89	Ø15		BLACK & RED	CP2623-89RK
CP2623-90	Ø15.9 (5/8")		BLACK	CP2623-90RK
CP2623-905	Ø16.8		BLACK & YELLOW	CP2623-905RK
CP2623-91	Ø17.8 (0.70")		BLUE	CP2623-91RK
CP2623-92	Ø19.1 (3/4")	SHEET 2	GREEN	CP2623-92RK
CP2623-93	Ø20.6 (13/16")		ORANGE	CP2623-93RK
CP2623-94	Ø22.2 (7/8")		RED	CP2623-94RK
CP2623-95	Ø23.8 (15/16")	SHEET 3	WHITE	CP2623-95RK
CP2623-96	Ø25.4 (1.0")		YELLOW	CP2623-96RK

ORDERING:
WHEN ORDERING PLEASE STATE PUSHROD TYPE AND LENGTH REQUIRED. ALSO SPECIFY WHICH TYPE OF INLET IS REQUIRED, e.g.
CP2623-90PRT088
CP2623-90PRT115
CP2623-90PRT160

AP RACING TECHNICAL SECTION WILL BE PLEASED TO ADVISE ON THE MOST SUITABLE EQUIPMENT FOR ANY APPLICATION.

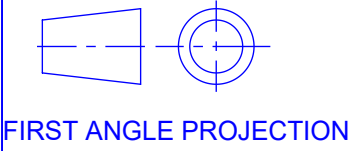


Issue No.	Alterations		Zone	Initials
	Date & No.	Particulars		
1	26/04/13 B6317	FIRST ISSUE		SAT
2	24/02/15 B7242	BOOT DIA'S Ø29.50 & Ø31.00 ADDED. DRAWING -1CD, PREVIOUSLY DETAILED CAST BODIES. -77CD FOR FORGED BODIES RENUMBERED TO REPLACE	10D 4B	SAT
3	13/04/16 B7242	SHEET 1 EXPANDED OVER 3 PAGES TO MAKE BODY & BOOT SIZE COMBINATIONS ACROSS CYL RANGE MORE CLEAR		SAT
4	22/05/25 WF-004106_01	LOCKING NUTS ADDED TO ALL VIEWS SHEET 3 FLANGE TO END OF BODY DIM AMENDED, 79.4 WAS 79.27, NO CHANGE TO MODEL SHEET 4 PUSHROD LENGTH POINTS TO FULL LENGTH ON NON CAPTIVE PUSHROD VIEW	6E 10C	JMH

SCALE 1:1		SHEET 1 OF 4	
DRAWN		Steve Thomas	
APPROVED			
DERIVED FROM		#	
TITLE			
CP2623 CUSTOMER DRAWING			
#			
DRG NO.		CP2623-1CD	

A2 INSTALLATION DRAWING

If this document is printed in hardcopy, it is for information use only and therefore is not subject to updating controls. Always refer to viewer for latest issue.



THIS DRAWING IS CONFIDENTIAL AND IS SUPPLIED ON THE EXPRESS CONDITION THAT IT SHALL NOT BE LOANED OR COPIED OR DISCLOSED TO ANY OTHER PERSON OR USED FOR ANY OTHER PURPOSE WITHOUT THE WRITTEN CONSENT OF AP RACING LTD.



© AP Racing Ltd. 2025

AP Racing
Wheler Road
Coventry
CV3 4LB

Tel: +44 024 7663 9595
Fax: +44 024 7663 9559
e-mail: sales@ap racing.co.uk
Web site: <http://www.ap racing.com>

Issue No.	Alterations		Zone	Initials
	Date & No.	Particulars		

AVAILABLE SIZES OF CYLINDER			
PART NUMBER	BORE SIZE	TIE WRAP	REPAIR KIT
CP2623-93	Ø20.6 (13/16")	ORANGE	CP2623-93RK
CP2623-94	Ø22.2 (7/8")	RED	CP2623-94RK

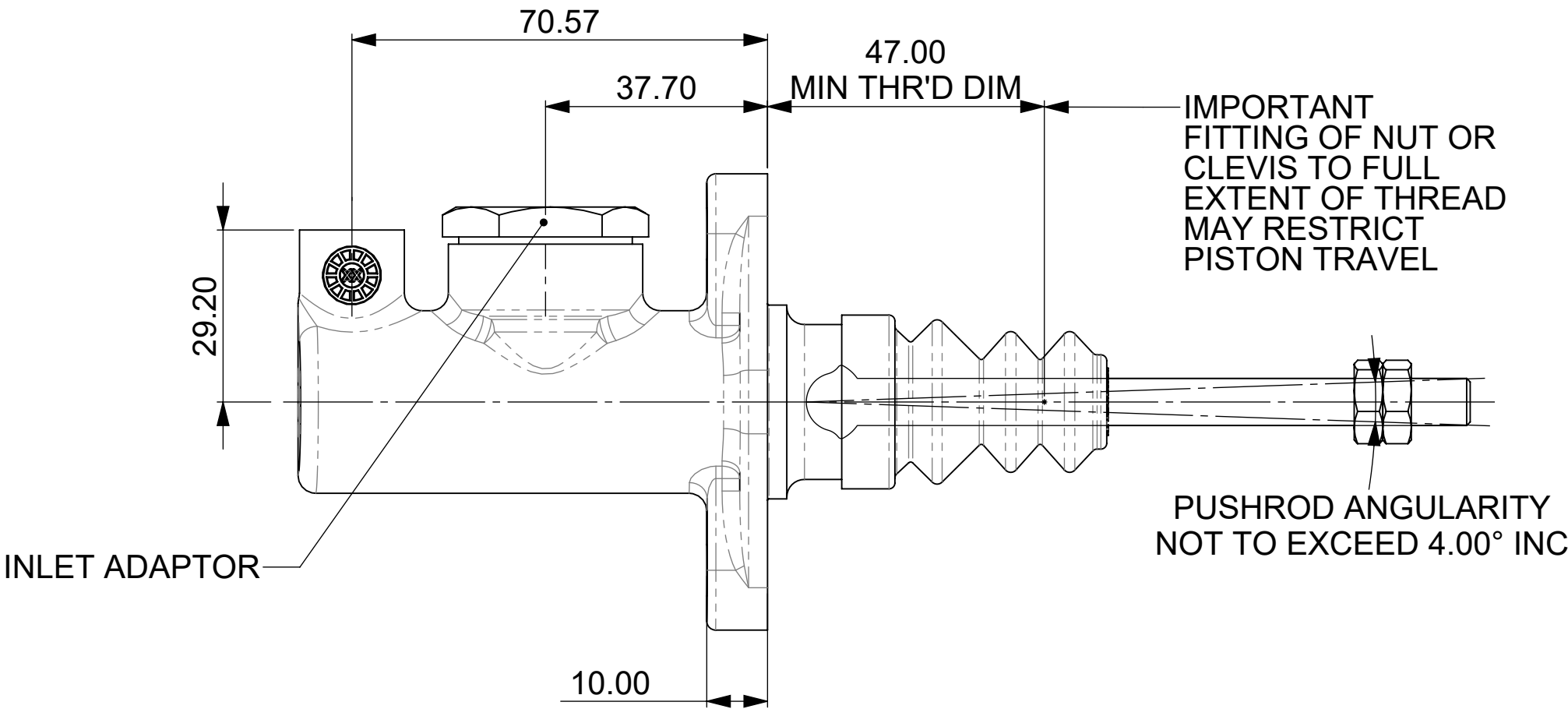
GENERAL DESCRIPTION:
LIGHT WEIGHT MASTER CYLINDER FOR USE IN ALL CAR APPLICATIONS. CP2623 MASTER CYLINDER IS SUPPLIED WITH 7/16" THREADED INLET

WEIGHT.....300g (0.661Lb)
FULL STROKE.....25.4 (1.0")
TRAVEL TO CUT-OFF
SHORT.....0.68 TO 1.09
(0.027" TO 0.043")
BODY MATERIAL.....ALUMINIUM ALLOY
TYPICAL APPLICATIONS.....FOR USE IN ALL CARS

SEE SHEET 4 FOR PUSHROD DETAILS AND INLET OPTIONS

ORDERING:
WHEN ORDERING PLEASE STATE PUSHROD TYPE AND LENGTH REQUIRED. ALSO SPECIFY WHICH TYPE OF INLET IS REQUIRED, e.g.
CP2623-90PRT088
CP2623-90PRT115
CP2623-90PRT160

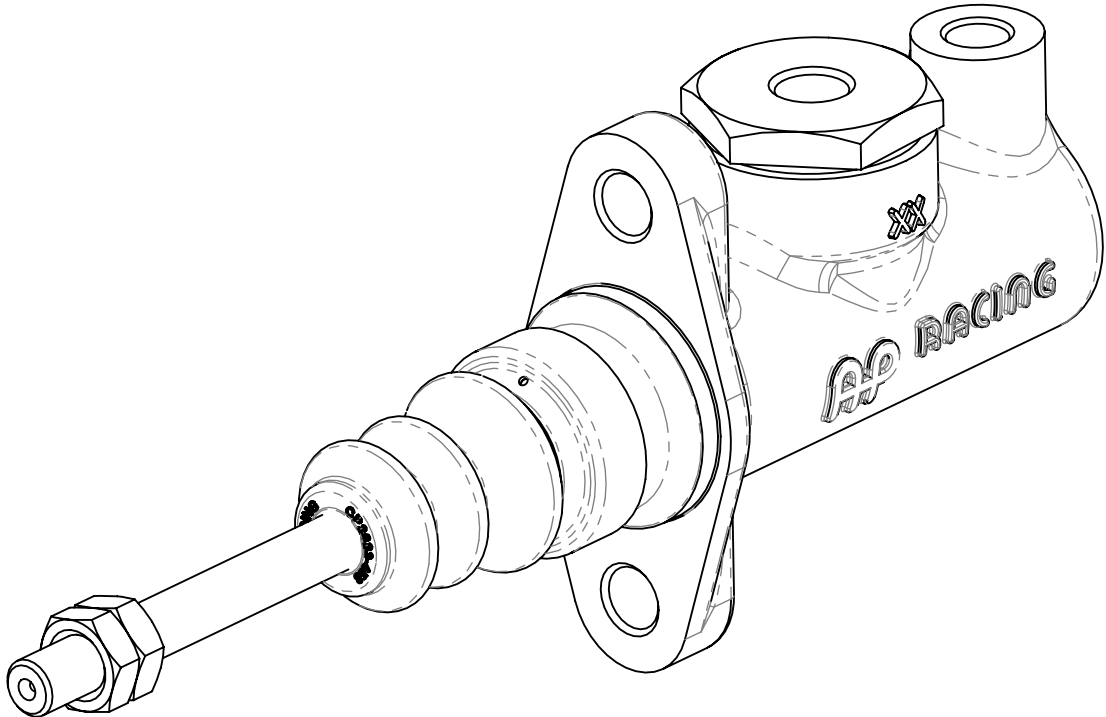
AP RACING TECHNICAL SECTION WILL BE PLEASED TO ADVISE ON THE MOST SUITABLE EQUIPMENT FOR ANY APPLICATION.



3/8" x 24 UNF OUTLET
AEROQUIP ADATOR
AVAILABLE

7/16" UNF
INLET THREAD

BOOT SHOWN FULLY
EXTENDED, ADJUST
TO YOUR LIKING



SCALE 1:1		SHEET 2 OF 4	
DRAWN	Steve Thomas		
APPROVED			
DERIVED FROM	#		
TITLE			
CP2623 CUSTOMER DRAWING			
#			
DRG NO.	CP2623-1CD		

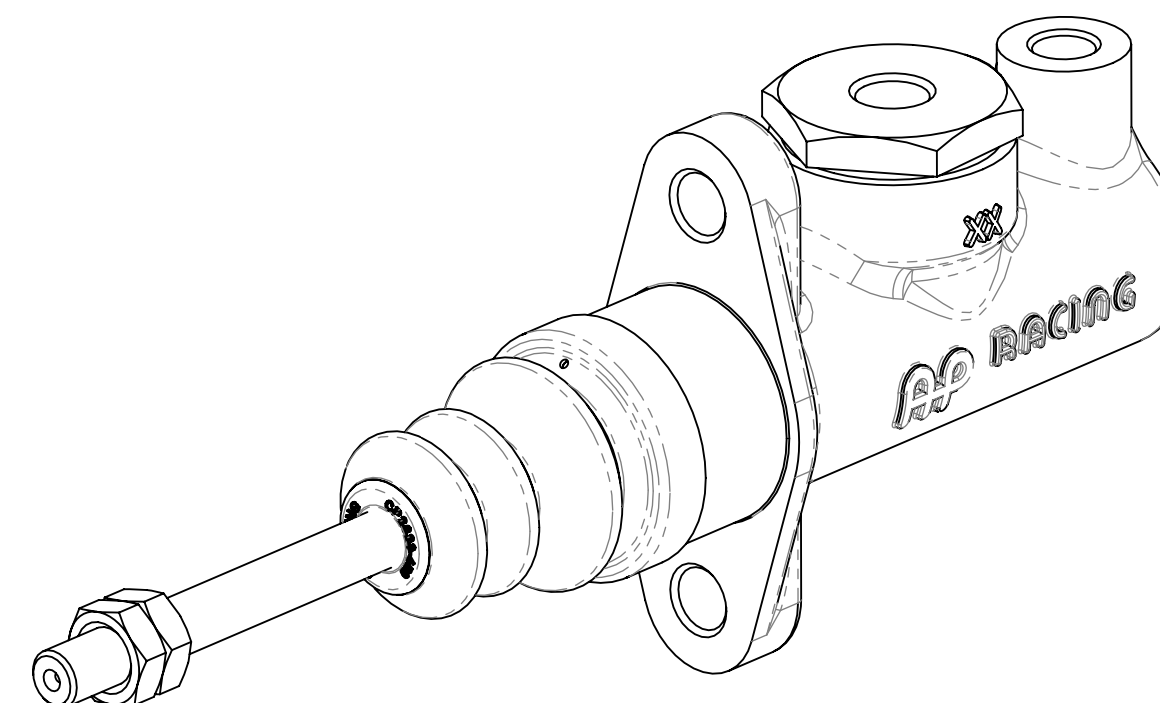
If this document is printed in hardcopy,
it is for information use only and therefore is
not subject to updating controls. Always
refer to viewer for latest issue.



Tel: +44 024 7663 9595
Fax: +44 024 7663 9559
e-mail: sales@apracing.co.uk
Web site: <http://www.apracing.com>

[illegible]

DRG NO.	CP2623-1CD
---------	------------



GENERAL DESCRIPTION:
LIGHT WEIGHT MASTER CYLINDER FOR USE IN
ALL CAR APPLICATIONS. CP2623 MASTER
CYLINDER IS SUPPLIED WITH 7/16" THREADED INLET

WEIGHT.....340g (0.750Lb)
 FULL STROKE.....25.4 (1.0")
 TRAVEL TO CUT-OFF
 SHORT.....0.68 TO 1.09

BODY MATERIAL.....	ALUMINIUM ALLOY
TYPICAL APPLICATIONS.....	FOR USE IN ALL CARS

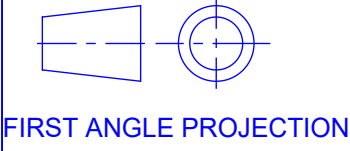
SEE SHEET 4 FOR PUSHROD DETAILS AND INLET OPTIONS

ORDERING:
WHEN ORDERING PLEASE STATE PUSHROD TYPE
AND LENGTH REQUIRED. ALSO SPECIFY
WHICH TYPE OF INLET IS REQUIRED, e.g.
CP2623-90PRT088
CP2623-90PRT115
CP2623-90PRT160

AP RACING TECHNICAL SECTION WILL BE PLEASED TO ADVISE ON THE MOST SUITABLE EQUIPMENT FOR ANY APPLICATION.

A2 INSTALLATION DRAWING

If this document is printed in hardcopy, it is for information use only and therefore is not subject to updating controls. Always refer to viewer for latest issue.



THIS DRAWING IS CONFIDENTIAL AND IS SUPPLIED ON THE EXPRESS CONDITION THAT IT SHALL NOT BE LOANED OR COPIED OR DISCLOSED TO ANY OTHER PERSON OR USED FOR ANY OTHER PURPOSE WITHOUT THE WRITTEN CONSENT OF AP RACING LTD.

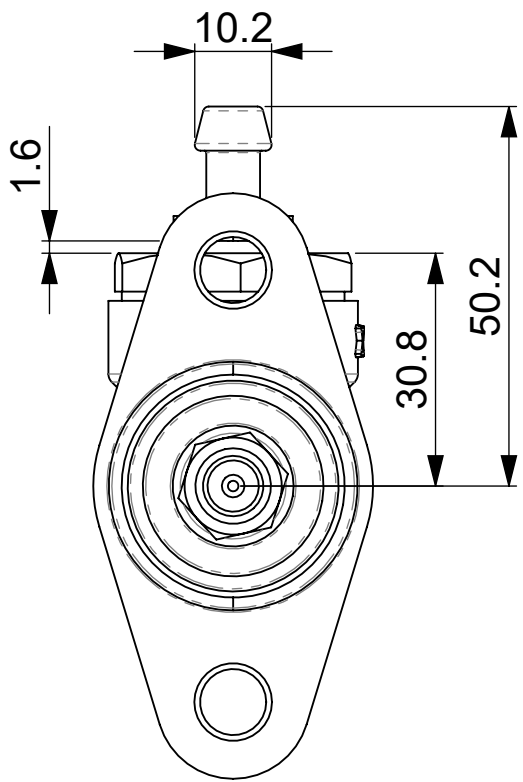


AP Racing
Wheler Road
Coventry
CV3 4LB

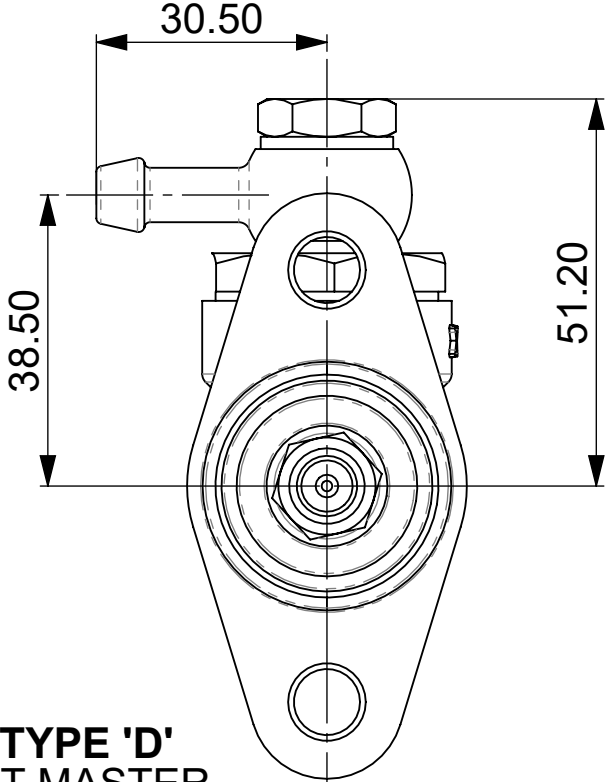
Tel: +44 024 7663 9595
Fax: +44 024 7663 9559
e-mail: sales@apracings.co.uk
Web site: http://www.apracings.com

© AP Racing Ltd. 2025

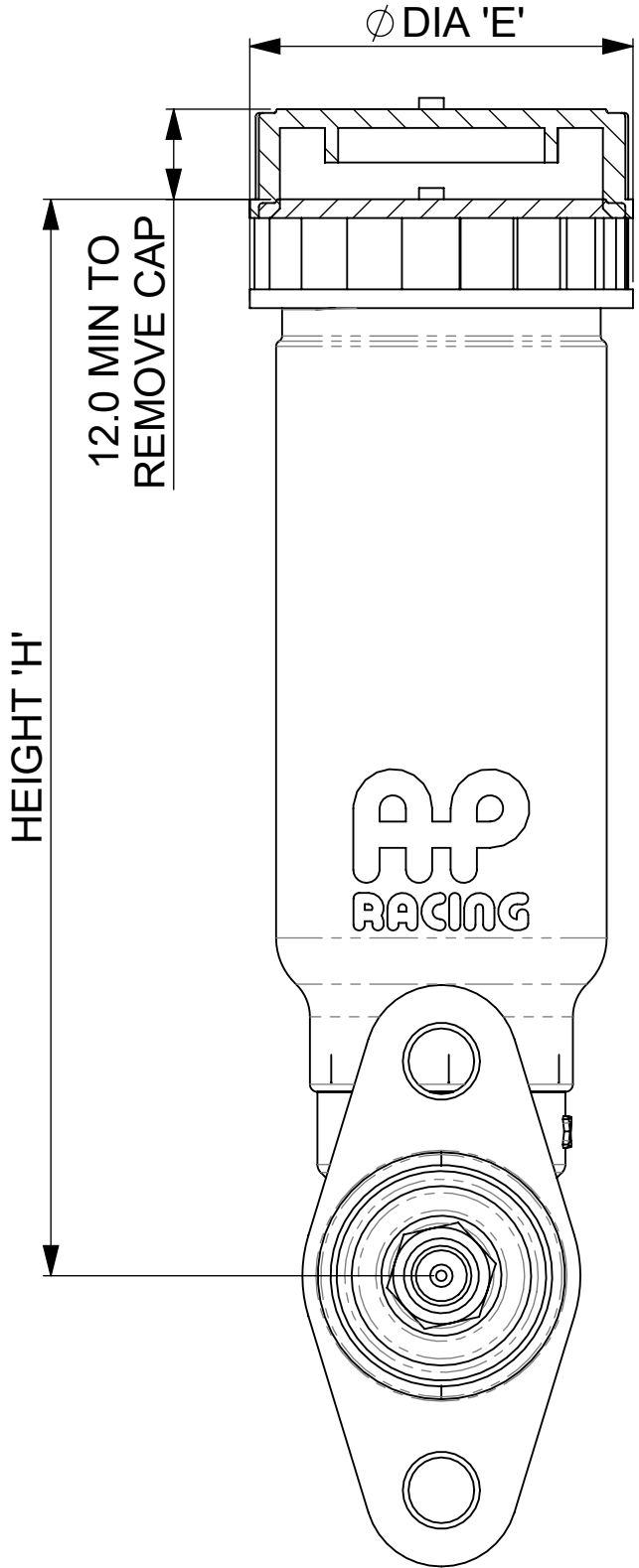
ALTERNATIVE INLET OPTIONS



INLET TYPE 'A'
SELECT MASTER CYLINDER WITH INLET TYPE 'B', PLUS INLET ADAPTOR KIT PART NUMBER CP2623-30



INLET TYPE 'D'
SELECT MASTER CYLINDER WITH INLET TYPE 'B', PLUS INLET ADAPTOR KIT PART NUMBER CP2623-41

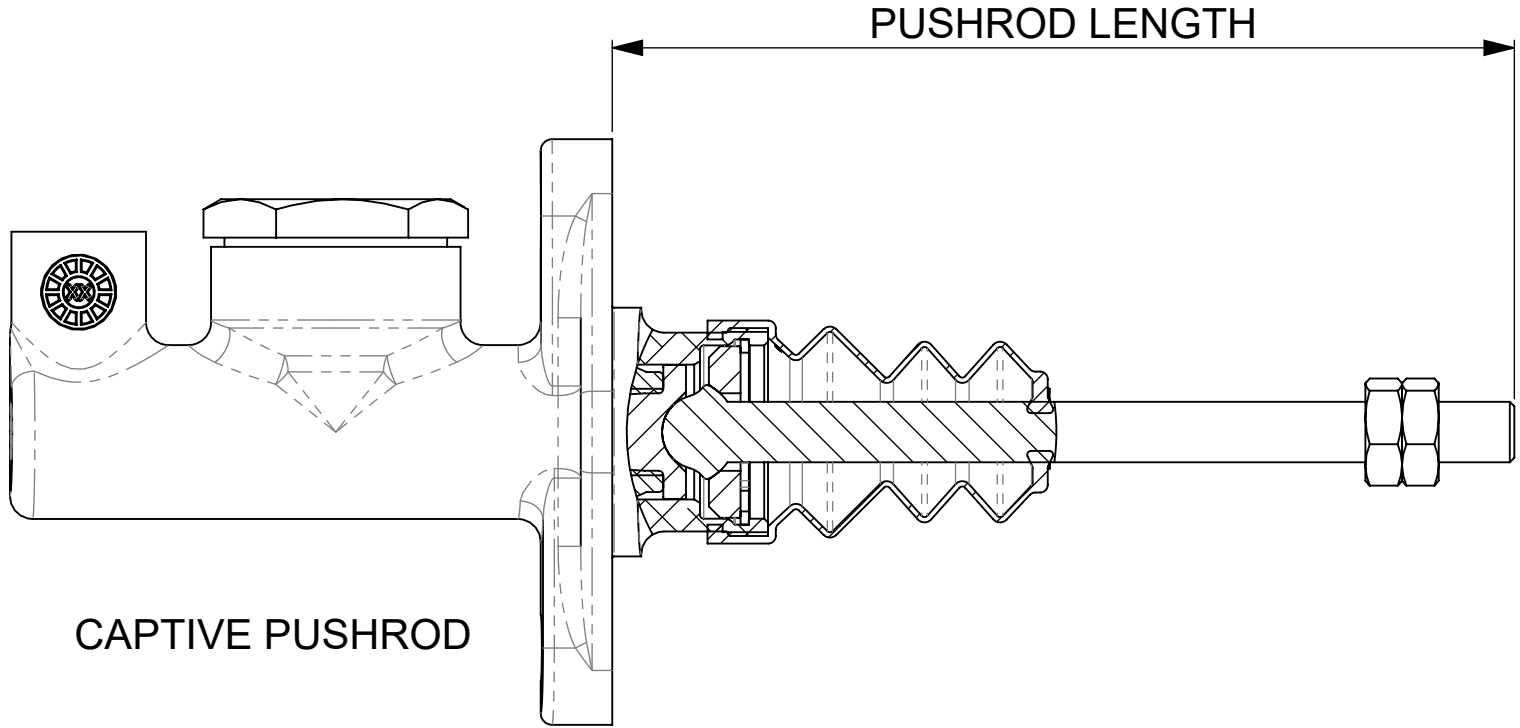


INLET TYPE 'C'
SELECT MASTER CYLINDER WITH INLET TYPE 'B', PLUS RESERVOIR FROM PART NUMBER CHART BELOW.

PLEASE NOTE:
TO FIT CP4709 TYPE RESERVOIRS THE INLET ADAPTOR AND COPPER GASKET ARE TO BE REMOVED. FITTING INSTRUCTIONS SUPPLIED WITH RESERVOIR.

RESERVOIR PART No.	HEIGHT 'H' mm (in)	DIA 'E' mm (in)	VOLUME cm ³ (in ³)
CP4709-10	194 (7.64")	51 (2.0")	183 (11.1)
CP4709-11	144 (5.67")	51 (2.0")	123 (7.5)
CP4709-12	104 (4.09")	51 (2.0")	75 (4.5)
CP2293-163	167 (6.57")	89 (3.5")	340 (20.7)

OTHER RESERVOIR OPTIONS AVAILABLE, SEE AP RACING HYDRAULIC ACTUATION CATALOGUE



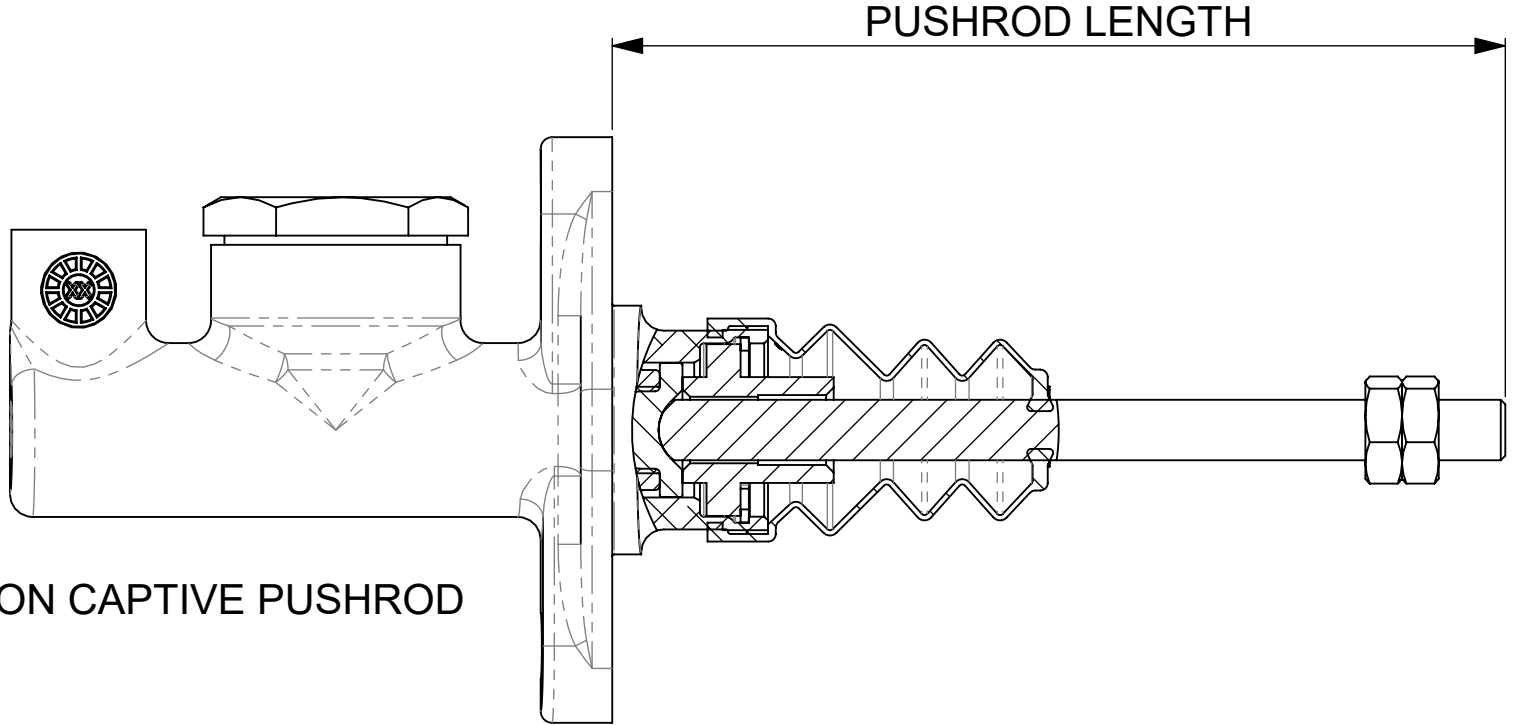
CAPTIVE PUSHROD

PUSHRODS ARE AVAILABLE IN THE FOLLOWING LENGTHS: 88mm (3.46"), 115mm (4.53") AND 160mm (6.3"). NON-STANDARD LENGTHS AVAILABLE ON REQUEST.

CAPTIVE PUSHROD TYPES:
PRT - PUSH ROD THREADED 5/16" UNF
PRM - PUSH ROD THREADED M8 x 1.25
PUSHROD LENGTHS ARE MEASURED FROM THE MOUNTING FLANGE.

IMPORTANT NOTE:
CP2623 MASTER CYLINDER IS INDIVIDUALLY SHIMMED DURING ASSEMBLY TO MINIMISE FREE PLAY. THEREFORE PUSH RODS SHOULD NOT BE SWITCHED BETWEEN INDIVIDUAL MASTER CYLINDER ASSEMBLIES.

PUSHROD EXTENTIONS THAT GIVE A TOTAL LENGTH OF OVER 200mm ARE NOT RECOMMENDED. IT IS THE CUSTOMERS RESPONSIBILITY TO CHECK SUITABILITY OF PUSHROD AND EXTENTION PIECES TO TAKE APPLIED LOADS.



NON CAPTIVE PUSHROD

NON CAPTIVE PUSHRODS:
CP2623 MASTER CYLINDER IS AVAILABLE WITH NON CAPTIVE PUSHRODS. THIS ENABLES THE REMOVAL OF THE MASTER CYLINDER WITHOUT NEED TO REMOVE THE PUSHROD FROM THE BRAKE PEDAL OR BALANCE BAR ASSEMBLY. PUSH RODS ARE AVAILABLE IN LENGTHS EQUIVALENT TO THOSE SHOWN ABOVE.
PUSHROD TYPES:
NCT - NON CAPTIVE PUSHROD THREADED 5/16" UNF
NCM - NON CAPTIVE PUSHROD THREADED M8 x1.25

Issue No.	Alterations		Zone	Initials
	Date & No.	Particulars		

SEE SHEET 1 FOR DETAILS

SCALE 1:1		SHEET 4 OF 4	
DRAWN	Steve Thomas		
APPROVED			
DERIVED FROM	#		
TITLE			
CP2623 CUSTOMER DRAWING			
#			
DRG NO.	CP2623-1CD		