

A1 INSTALLATION DRAWING

IF THIS DOCUMENT IS PRINTED IN HARDCOPY, IT IS FOR INFORMATION USE ONLY AND THEREFORE IS NOT SUBJECT TO UPDATING CONTROLS. ALWAYS REFER TO SOLIDWORKS VIEWER FOR LATEST ISSUE



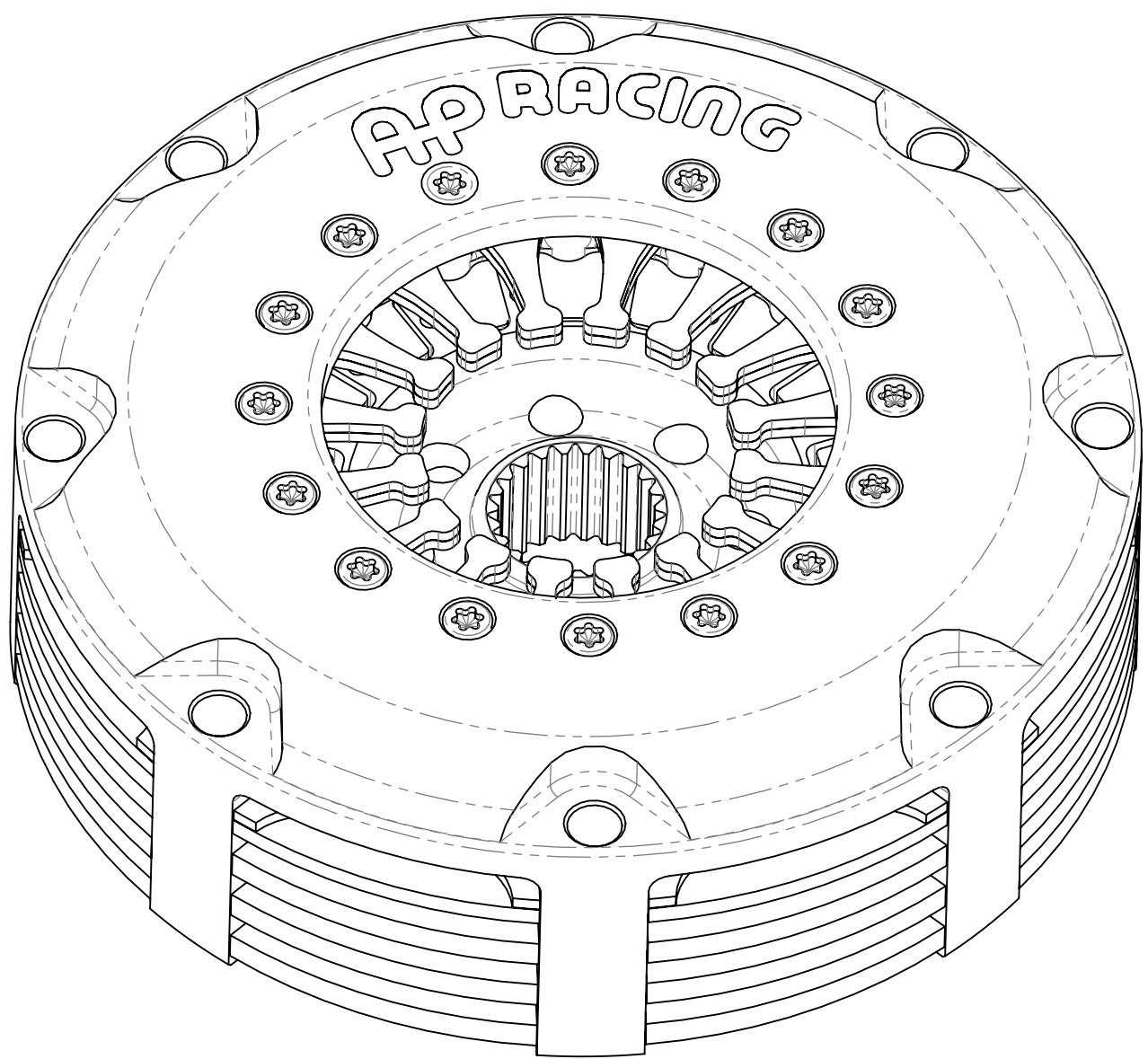
THIS DRAWING IS CONFIDENTIAL AND IS SUPPLIED ON THE EXPRESS CONDITION THAT IT SHALL NOT BE LOANED OR COPIED OR DISCLOSED TO ANY OTHER PERSON OR USED FOR ANY OTHER PURPOSE WITHOUT THE WRITTEN CONSENT OF AP RACING LTD.



© AP Racing Ltd. 2002
AP Racing
Wheler Road
Coventry
CV3 4LB

Tel: +44 024 7663 9595 e-mail: sales@aprac racing.co.uk
Fax: +44 024 7663 9559 Web site: HTTP://www.aprac racing.com

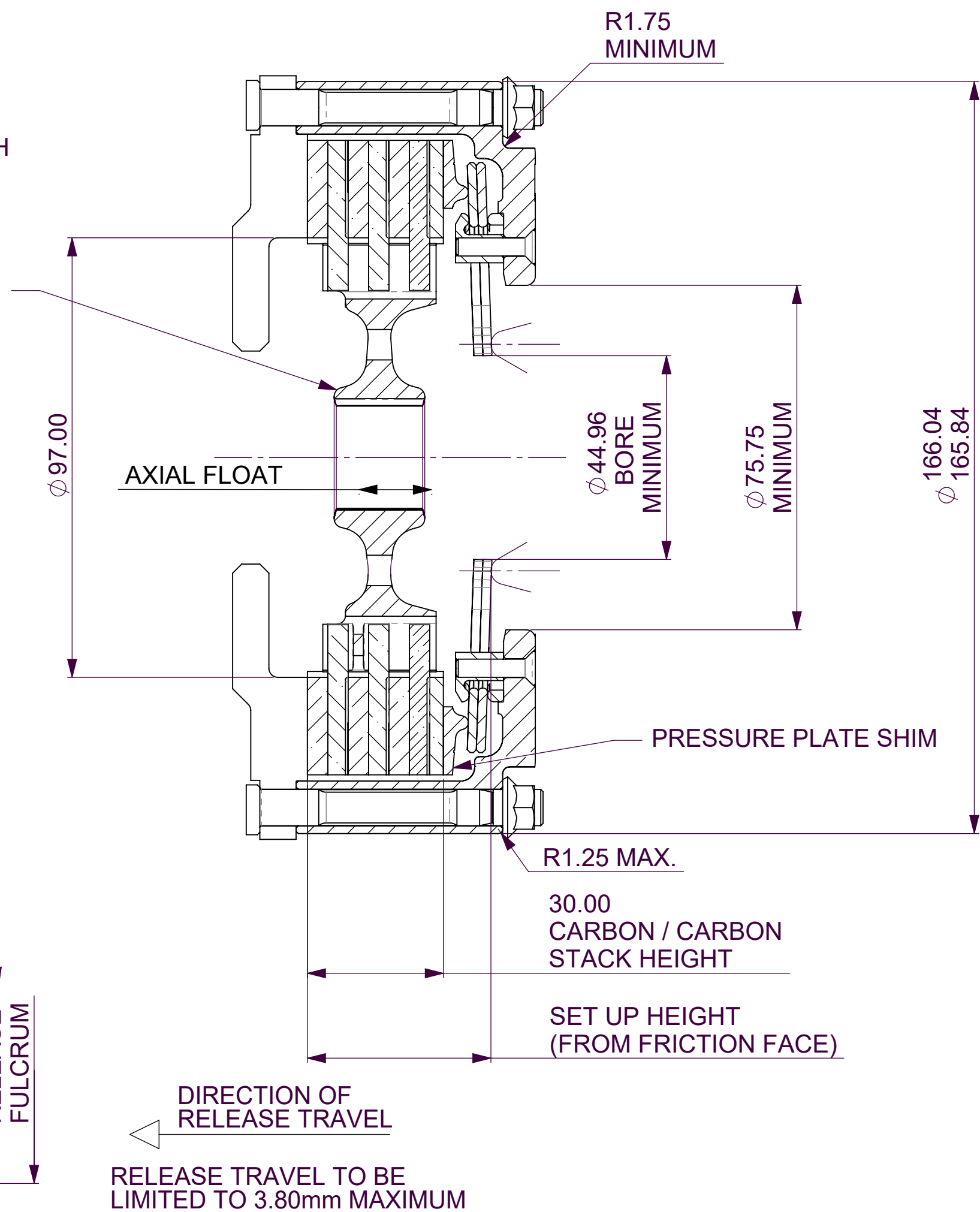
CP7143 Ø140mm (5.5") CARBON / CARBON CLUTCH ASSEMBLY INCLUDING AN OPTIONAL CUSHION FLYWHEEL SYSTEM (CFS)



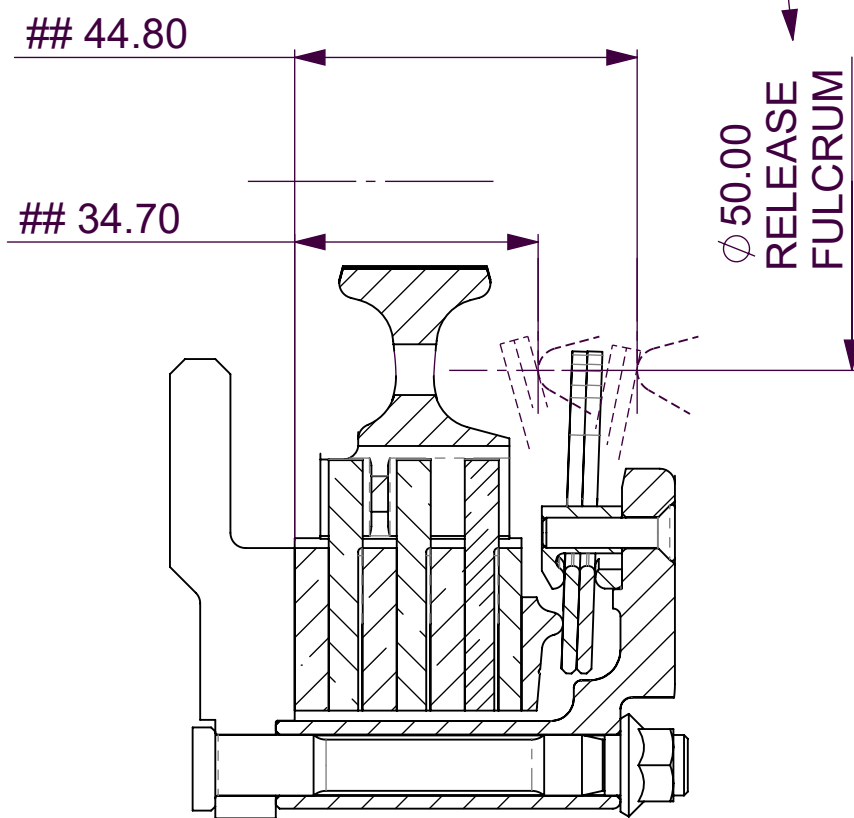
HUB PART No.	SPLINE
CP5143-102S	1.00" x 23
CP5143-103S	0.875" x 20
CP5143-104S	1.16" x 26

HUBS ARE AVAILABLE WITH OTHER SPLINE SIZES. CONTACT AP RACING FOR DETAILS.

FOR HUB ENVELOPE SEE SHEET 2.



SEE CP3457 RELEASE BEARING RANGE.



V-V

BEARING POSITION

TO ENSURE ADEQUATE RELEASE TRAVEL AND CLUTCH LIFE THESE LIMITS HAVE BEEN CALCULATED USING AN ADDITIONAL 20% RELEASE TRAVEL AND 50% MORE WEAR IN THAN SPECIFIED. (CALCULATED FROM THE FRICTION FACE.)

THESE FIGURES COVER THE FULL RANGE OF CLUTCHES IN THE CP7143 FAMILY.

CP7143 CLUTCH FAMILY

MAXIMUM DYNAMIC TORQUE CAPACITY						
(Nm)	1112	884	806	639	632	473
(ft.lb)	821	651	594	471	465	348
RELEASE LOAD						
Max. Peak Worn (N)	4500	4500	3750	3750	4500	3750
At Travel (N)	3000	3000	2500	2500	3000	2500
WEAR IN (See Note)						
	0.5	0.5	0.5	0.5	1.0	1.0
Set Up Height New	41.32 39.96	40.88 39.69	40.72 39.38	40.84 39.50	40.85 39.79	40.37 39.33
Set Up Height Worn	43.58	42.62	43.10	43.14	43.40	42.92
(Set Up Height is calculated from the flywheel friction face.)						
Release Ratio	4.48	3.44	4.48	3.44	2.64	2.64
Estimated Assembly Mass (Inc. Hub with Steel Main Pressure Plate) = 2.21 Kg						
Estimated Assembly Inertia (Inc. Hub with Steel Main Pressure Plate) = 0.00766 Kgm²						
Estimated Driven Plate and Hub Inertia = 0.00095 Kgm²						
PERFORMANCE SUFFIX	CM	CE	OM	OE	CH	OH
For Reference						
Diaphragm Spring Rate	CRV	CRV	ORA	ORA	CRV	ORA
Clutch Ratio	MHR	EHR	MHR	EHR	HiR	HiR

MATERIAL SUFFIX	COVER MATERIAL	PRESSURE PLATE MATERIAL	CARBON / CARBON TYPE
28	ALUMINIUM	STEEL	STANDARD DUTY
02	ALUMINIUM	STEEL	HEAVY DUTY

FLYWHEEL TYPE		
	SUFFIX	COMMENTS
STANDARD FLAT FLYWHEEL	FN	FOR INSTALLATION DATA SEE SHEET 2
STANDARD STEPPED FLYWHEEL	SN	FOR INSTALLATION DATA SEE SHEET 2
FLAT FLYWHEEL WITH CFS	FC	FOR INSTALLATION DATA SEE SHEET 2 AND FLYWHEEL DETAILS SEE SHEET 3
STEPPED FLYWHEEL WITH CFS	SC	FOR INSTALLATION DATA SEE SHEET 2 AND FLYWHEEL DETAILS SEE SHEET 3

Sample AP Racing Part No. CP7143-CE28-SN

WEAR IN

THIS CLUTCH HAS BEEN DESIGNED FOR THE WEAR IN INDICATED ABOVE, WHICH MUST BE COMPENSATED FOR BY USING PRESSURE PLATE "SHIMS" FROM THE KITS DETAILED BELOW. THE MAXIMUM CARBON STACK WEAR FOR THIS ASSEMBLY IS 6.00mm

	CM & OM	CE & OE	CH & OH
STANDARD KIT 0.50 - 5.50 IN 0.50 STEPS	CP4502-9S (STEEL)	CP5253-3S (STEEL) CP5453-5T (TITANIUM)	CP4973-4S (STEEL)
INTERMEDIATE KIT 0.25 - 5.25 IN 0.50 STEPS	CP4502-10S (STEEL)	CP5253-2S (STEEL) CP5453-4T (TITANIUM)	CP4973-3S (STEEL)

Issue No.	Alterations		Zone	Initials
	Date & No.	Particulars		
1	08/10/02 C2098	FIRST ISSUE	#	JG
2	04/11/02 RAC10891	'04' MATERIAL OPTION REMOVED FROM DRAWING.	#	JG
3	04/02/03	SEE SHEET 3	#	JG
4	13/03/03	44.80 WAS 47.80	C1	JG
5	29/08/03	SEE SHEET 2	#	JG
6	04/08/04 C2504	TITANIUM PRESSUREPLATE KITS ADDED TO CE AND OE ASSEMBLIES. MATERIAL SUFFIX ADDED TO THE STEEL KITS.	#	#
7	05/10/04	SHEET 1: R1.25 MAX. ADDED. SHEET 2 : 44.50° MIN. WAS 45.00°	D5	JG
8	18/10/04 C2551	SHEET 2: FLYWHEEL HOLE SIZE Ø8.020/8.005 WAS Ø8.15/8.05	#	JG
9	10/07/08 C3446	SET UP HEIGHT TOLERANCE ADDED. OE SPEC MAX WORN: 43.14 WAS 42.14	#	JG
10	21/03/25 WF-003768:01	MATERIAL SUFFIX 28 WAS 01	F10	DN

SCALE 1:1		SHEET 1 OF 3	
DRAWN	Jeremy Govan		
APPROVED			
DERIVED FROM			
TITLE			
Ø140mm TRIPLE PLATE CARBON			
CARBON CLUTCH ASSEMBLY			
DRG NO.	cp7143cd		

A1

INSTALLATION
DRAWING

IF THIS DOCUMENT IS PRINTED IN HARDCOPY,
IT IS FOR INFORMATION USE ONLY AND THEREFORE
IS NOT SUBJECT TO UPDATING CONTROLS. ALWAYS
REFER TO SOLIDWORKS VIEWER FOR LATEST ISSUE



FIRST ANGLE
PROJECTION

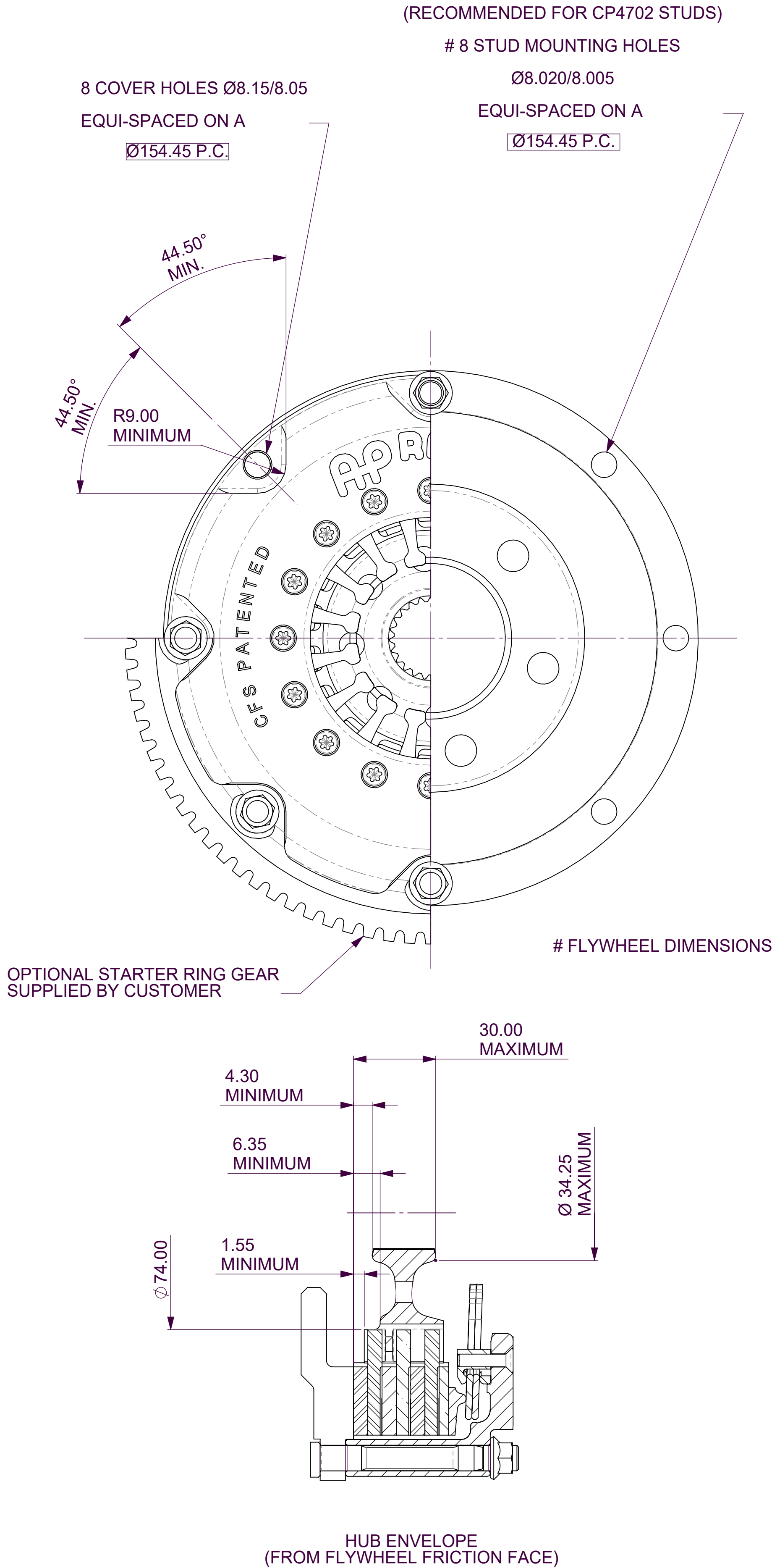
THIS DRAWING IS CONFIDENTIAL AND IS SUPPLIED ON THE EXPRESS CONDITION THAT
IT SHALL NOT BE LOANED OR COPIED OR DISCLOSED TO ANY OTHER PERSON OR USED
FOR ANY OTHER PURPOSE WITHOUT THE WRITTEN CONSENT OF AP RACING LTD.



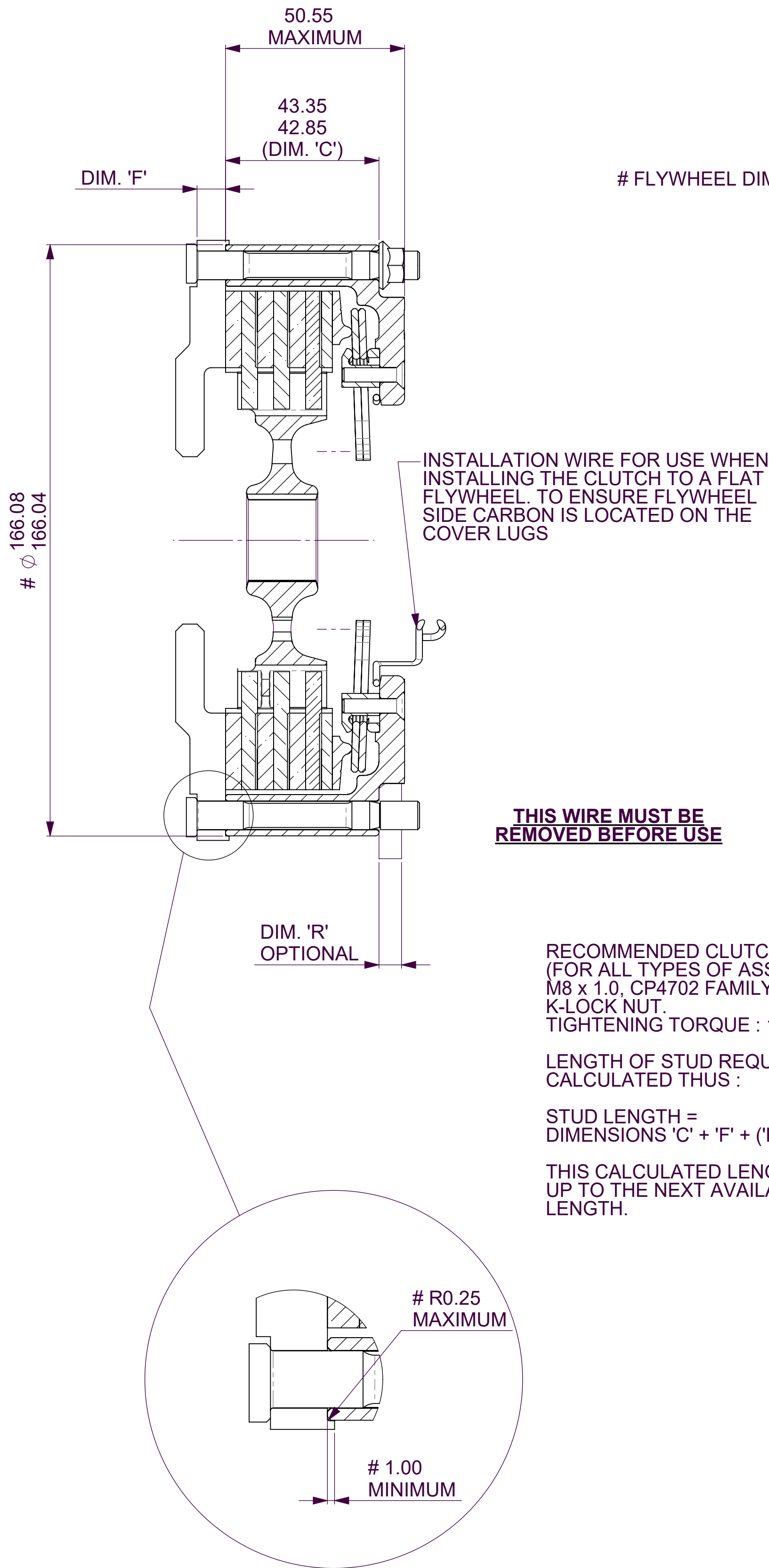
© AP Racing Ltd. 2002
AP Racing
Wheler Road
Coventry
CV3 4LB

Tel: +44 024 7663 9595 e-mail: sales@apracings.co.uk
Fax: +44 024 7663 9559 Web site: HTTP://www.apracings.com

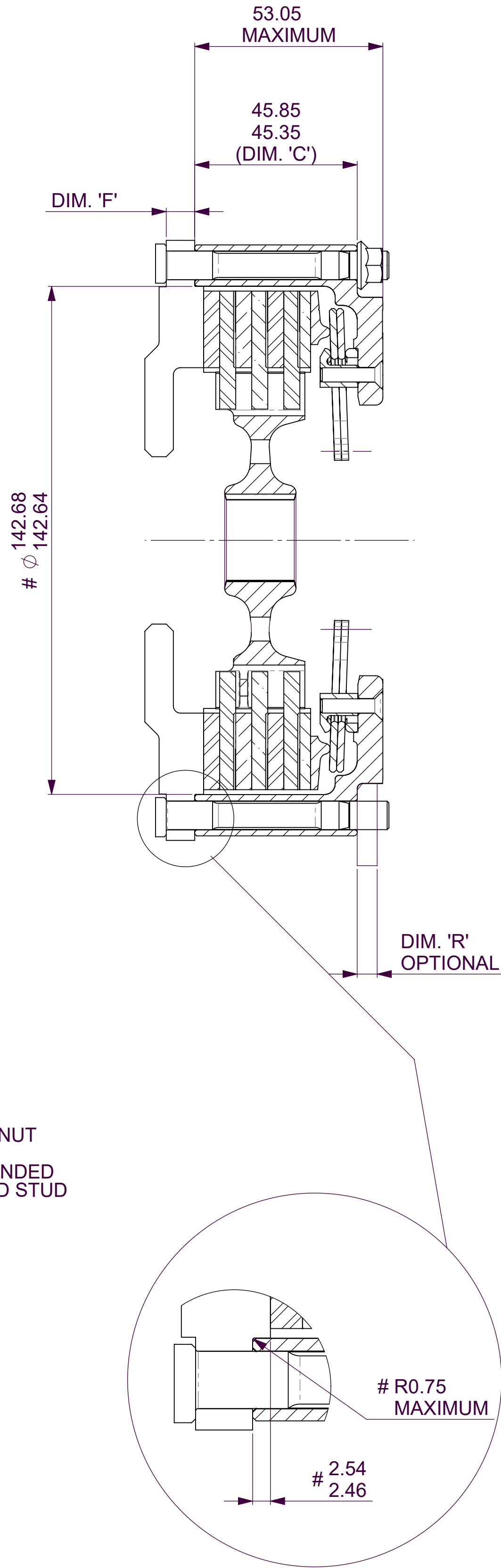
Issue No.	Alterations		Zone	Initials
	Date & No.	Particulars		
-	-	SEE SHEET 1 FOR ISSUE INFORMATION.	-	-



FLAT FLYWHEEL - SUFFIX FN AND FC



STEPPED FLYWHEEL SUFFIX SN AND SC



RECOMMENDED CLUTCH MOUNTING :
(FOR ALL TYPES OF ASSEMBLY)
M8 x 1.0, CP4702 FAMILY STUD AND
K-LOCK NUT.
TIGHTENING TORQUE : 19Nm (14 ft.lb)

LENGTH OF STUD REQUIRED TO BE
CALCULATED THUS :

STUD LENGTH =
DIMENSIONS 'C' + 'F' + ('R' OPTIONAL) + NUT

THIS CALCULATED LENGTH TO BE ROUNDED
UP TO THE NEXT AVAILABLE STANDARD STUD
LENGTH.

SCALE 1:1		SHEET 2 OF 3	
DRAWN	Jeremy Govan		
APPROVED			
DERIVED FROM			
TITLE			
Ø140mm TRIPLE PLATE CARBON			
CARBON CLUTCH ASSEMBLY			
DRG NO.	cp7143cd		

A1

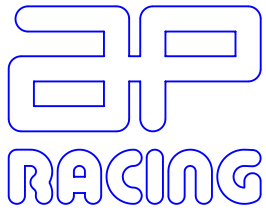
INSTALLATION
DRAWING

IF THIS DOCUMENT IS PRINTED IN HARDCOPY,
IT IS FOR INFORMATION USE ONLY AND THEREFORE
IS NOT SUBJECT TO UPDATING CONTROLS. ALWAYS
REFER TO SOLIDWORKS VIEWER FOR LATEST ISSUE



FIRST ANGLE
PROJECTION

THIS DRAWING IS CONFIDENTIAL AND IS SUPPLIED ON THE EXPRESS CONDITION THAT
IT SHALL NOT BE LOANED OR COPIED OR DISCLOSED TO ANY OTHER PERSON OR USED
FOR ANY OTHER PURPOSE WITHOUT THE WRITTEN CONSENT OF AP RACING LTD.

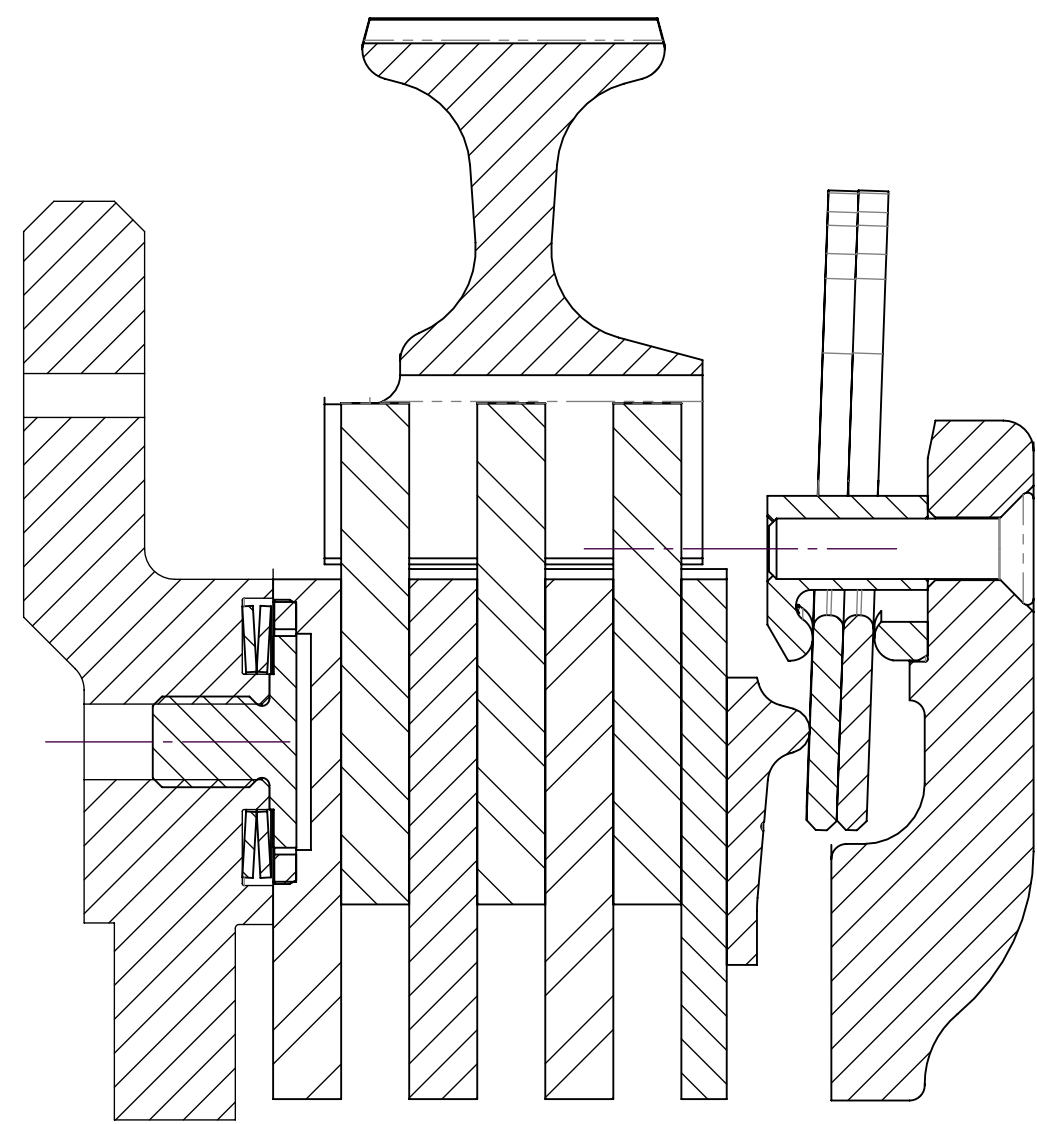


© AP Racing Ltd. 2002

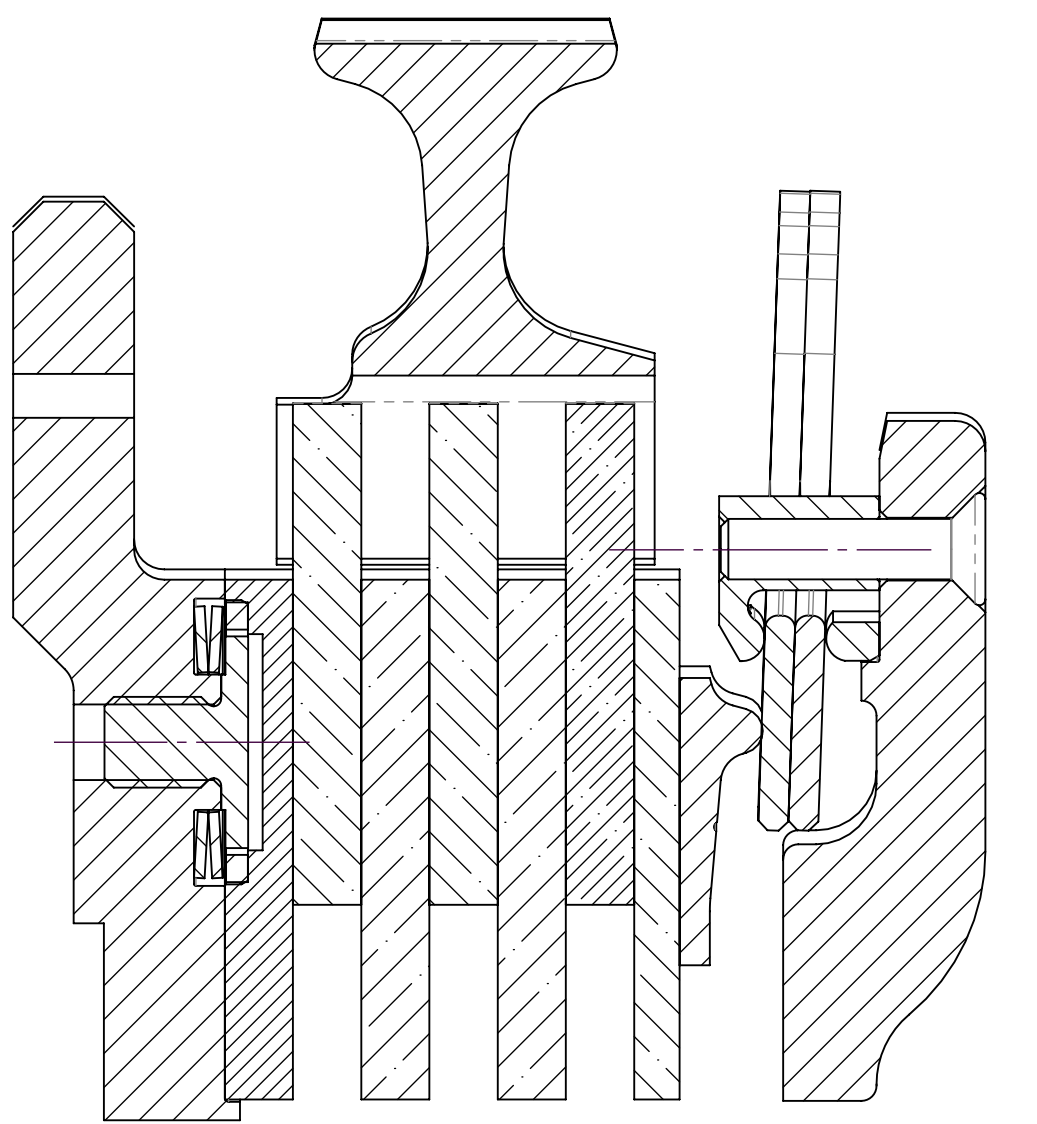
AP Racing
Wheler Road
Coventry
CV3 4LB

Tel: +44 024 7663 9595 e-mail: sales@apracings.co.uk
Fax: +44 024 7663 9559 Web site: HTTP://www.apracings.com

Issue No.	Alterations		Zone	Initials
	Date & No.	Particulars		
-	-	SEE SHEET 1 FOR ISSUE INFORMATION.	-	-

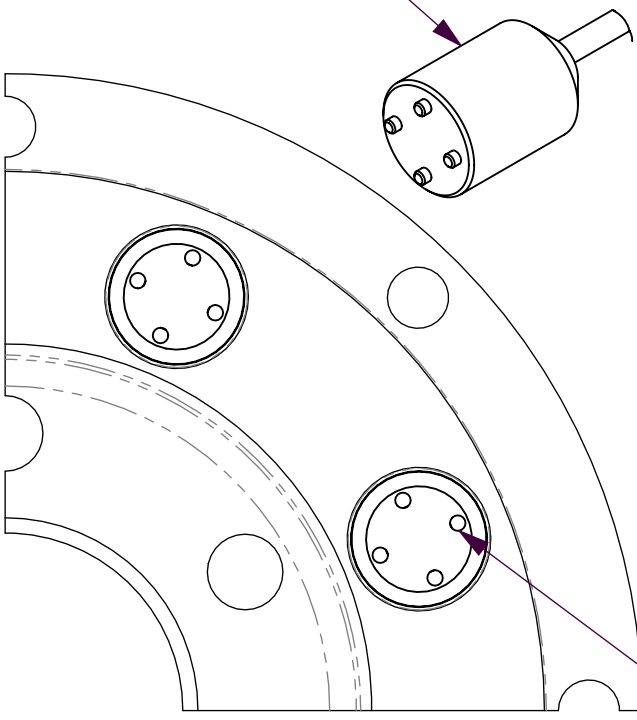


SECTION SHOWING A STEPPED FLYWHEEL
WITH CFS (CUSHION FLYWHEEL SYSTEM)
PART NUMBER SUFFIX - SC

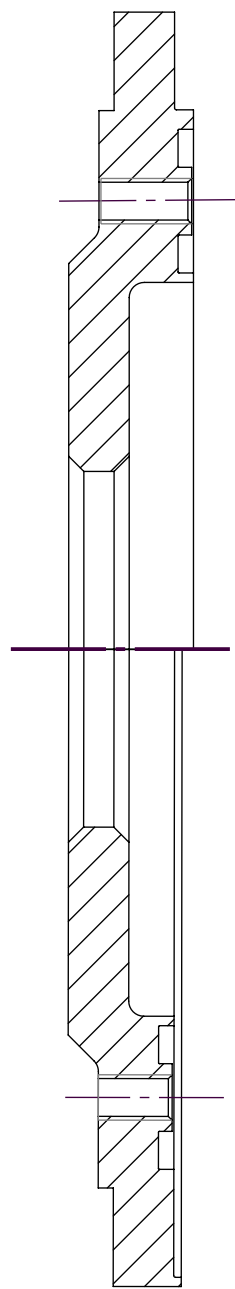
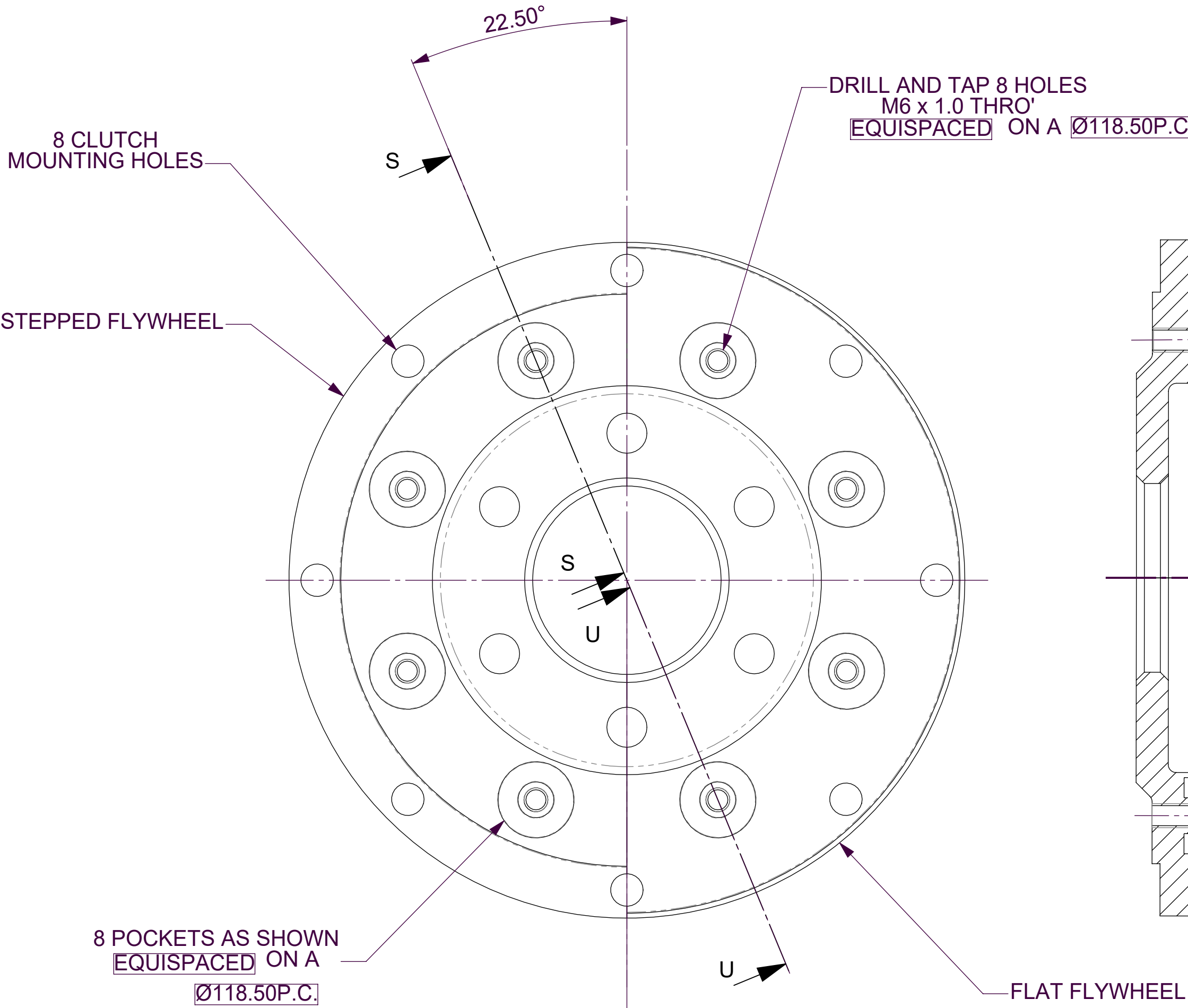


SECTION SHOWING A FLAT FLYWHEEL
WITH CFS (CUSHION FLYWHEEL SYSTEM)
PART NUMBER SUFFIX - FC

CFS RETAINING SCREW
INSTALLATION TOOL.
PART NUMBER CP6623-107

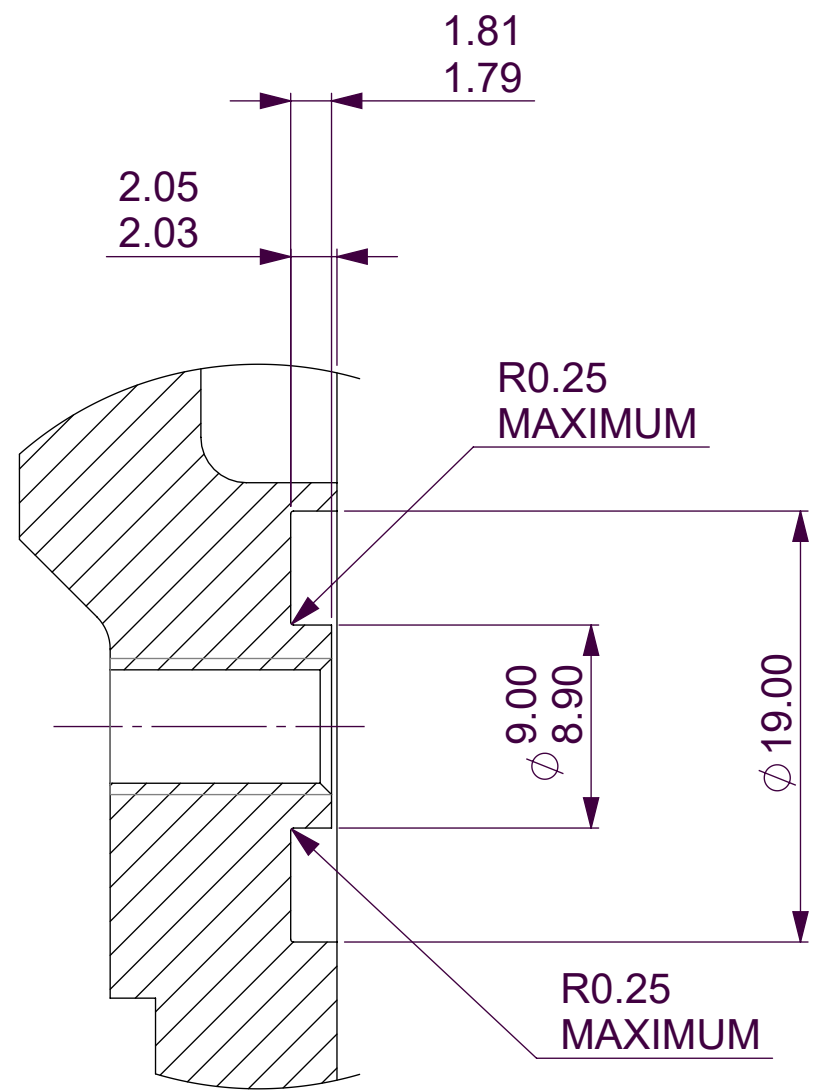


4 HOLES Ø2.08/2.03
EQUI-SPACED ON A
Ø11.10 P.C.



U-U
FLAT FLYWHEEL

S-S
STEPPED FLYWHEEL

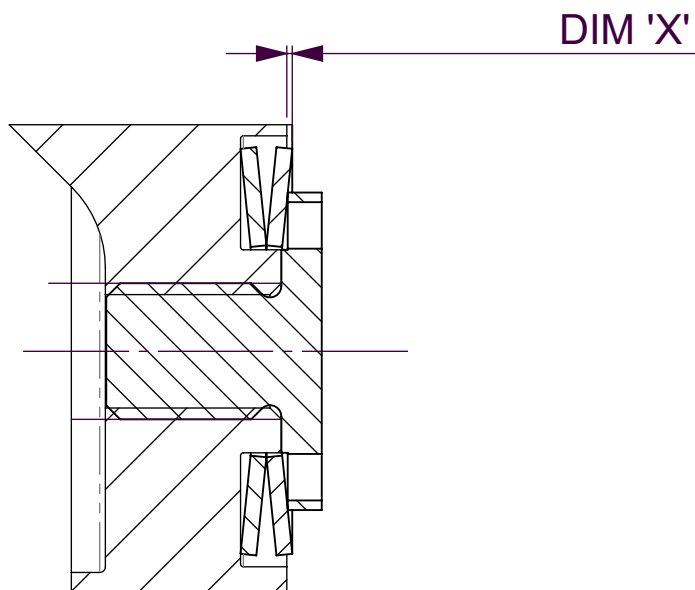


MODIFICATION REQUIRED
TO FLAT AND STEPPED
FLYWHEELS. (3 : 1)

DIMENSIONS FOR A STEEL FLYWHEEL ONLY
WHEN AN ALUMINIUM FLYWHEEL IS USED
SEE DRAWING CP7142-3CD FOR ALTERNATIVE
DIMENSIONS AND CFS KIT.

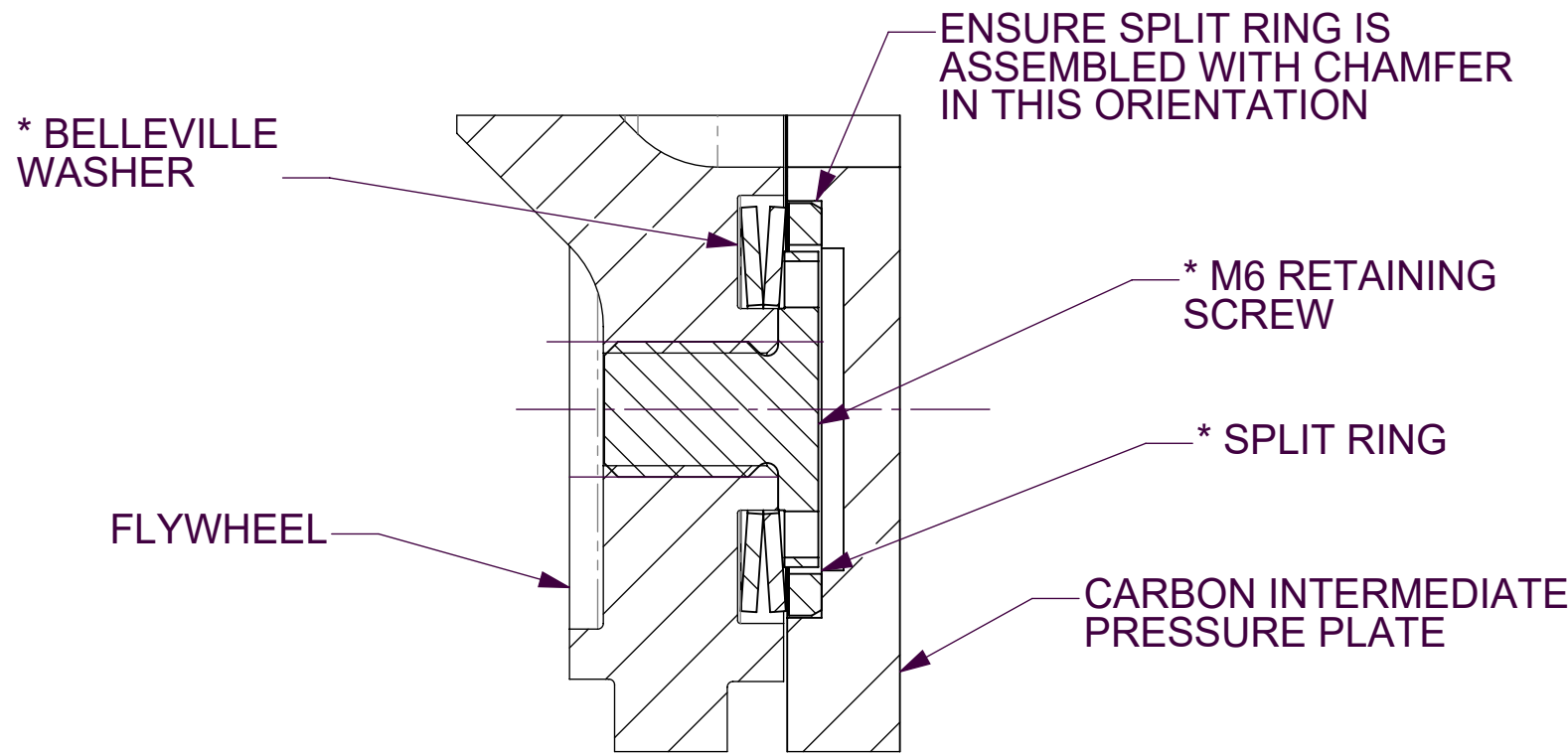
FLYWHEEL MODIFICATIONS REQUIRED TO ENABLE
THE USE OF CFS
PART NUMBER SUFFIX -SC AND -FC

CUSHIONING REPLACEMENT CRITERIA



P-P (3 : 1)

WITH TIME AND USE THE CUSHIONING EFFECT WILL DETERIORATE
AND COMPONENTS SHOULD BE SERVICED WITH THE ABOVE KIT WHEN EITHER
THE BELLEVILLES BECOME LOOSE OR WHEN DIMENSION 'X' FALLS BELOW 0.2,
TAKEN AS THE AVERAGE OF 4 EQUALLY SPACED MEASUREMENTS AROUND
THE CIRCUMFERENCE OF THE BELLEVILLE.



* CUSHION FLYWHEEL COMPONENTS
AVAILABLE IN KIT FORM.

PART No. CP6323-4

CP6323-4 Cushion Flywheel Kit Installation

- Machine 8 equispaced pockets and M6 x 1.0 tapped holes into the friction surface of the flywheel, to the size and position shown on opposite.
- Place the two Belleville washers supplied into each pocket in the orientation shown below.
- Apply Loctite 620 to threads and tighten the M6 x 1.0 screws onto the Belleville washers to a torque of 4Nm.
- Compress split washers using pliers and fit into recesses in bottom carbon/carbon pressure plate. Ensure split washers are flush with the friction face

SCALE 1:1		SHEET 3 OF 3	
DRAWN	Jeremy Govan		
APPROVED			
DERIVED FROM			
TITLE			
Ø140mm TRIPLE PLATE CARBON			
CARBON CLUTCH ASSEMBLY			
DRG NO.	cp7143cd		