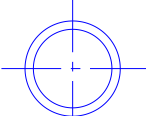


IF THIS DOCUMENT IS PRINTED IN HARDCOPY,  
IT IS FOR INFORMATION USE ONLY AND THEREFORE  
IS NOT SUBJECT TO UPDATING CONTROLS. ALWAYS  
REFER TO SOLIDWORKS VIEWER FOR LATEST ISSUE



## FIRST ANGLE PROJECTION

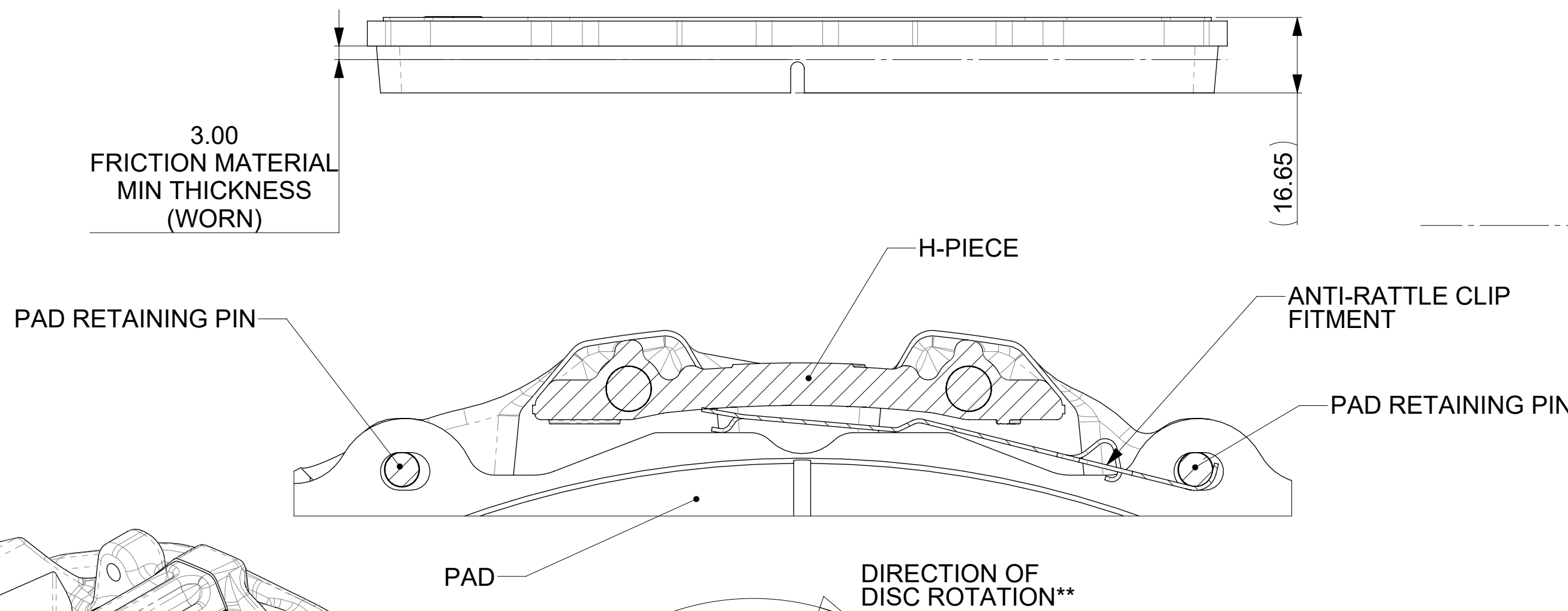
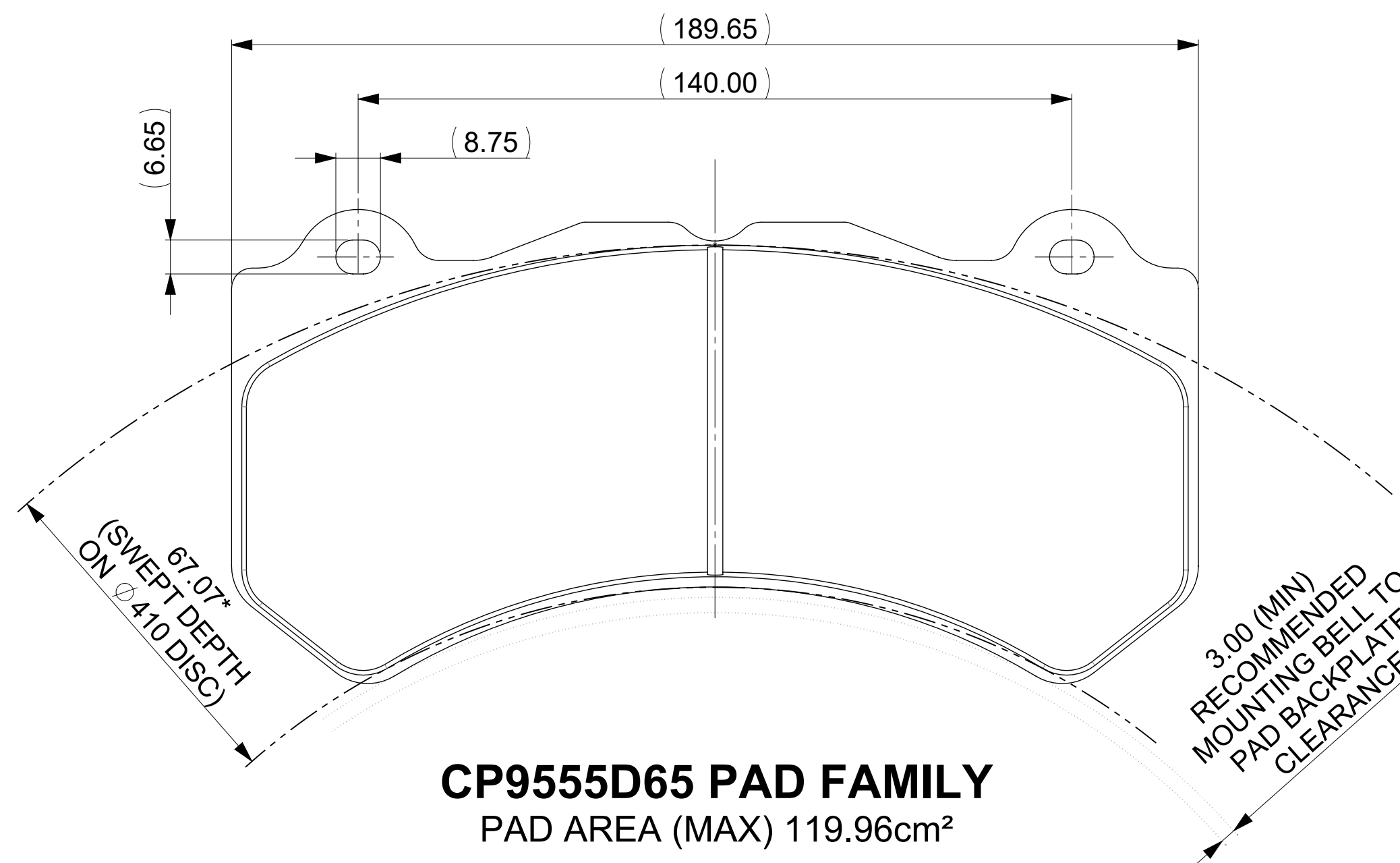
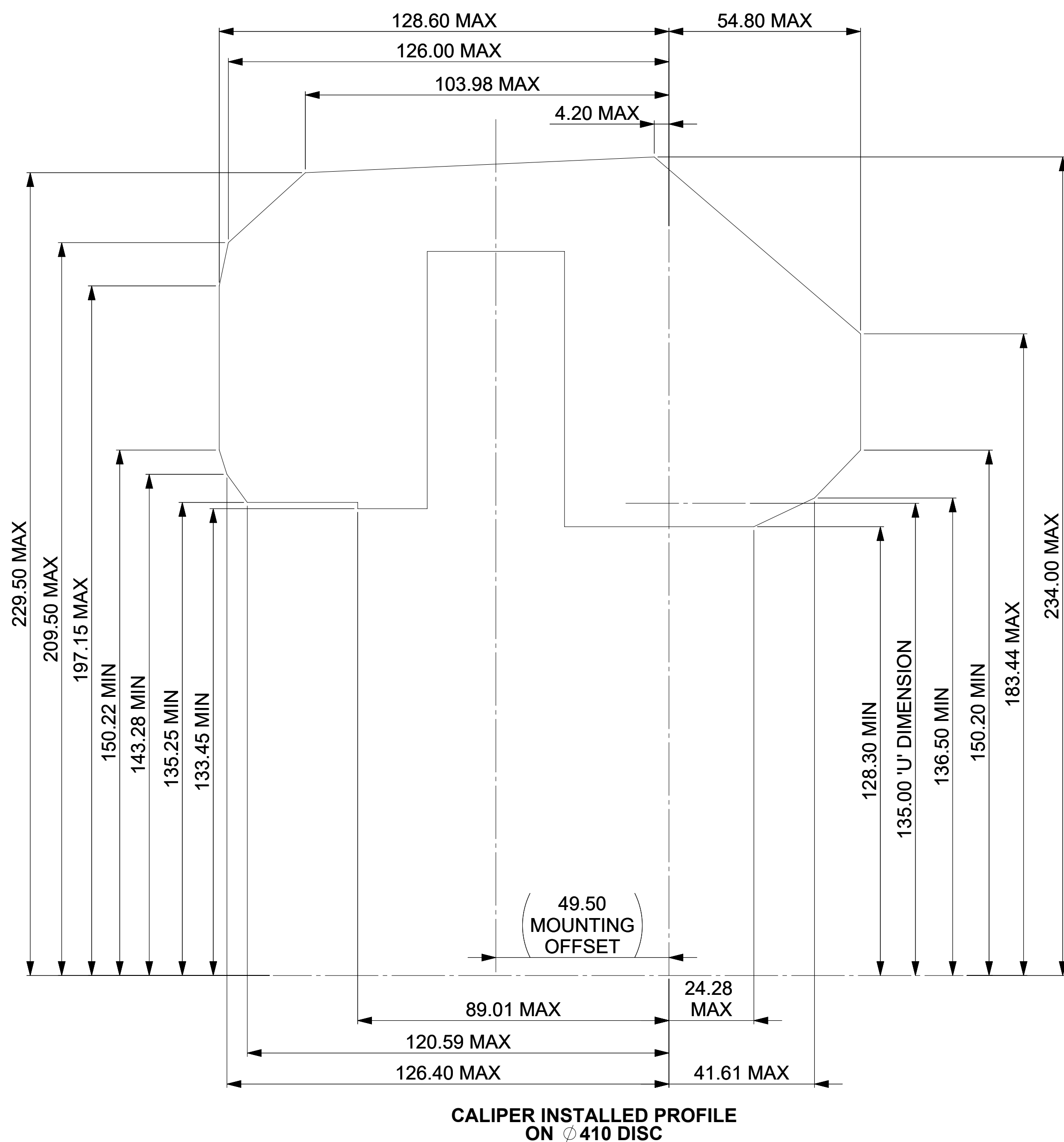
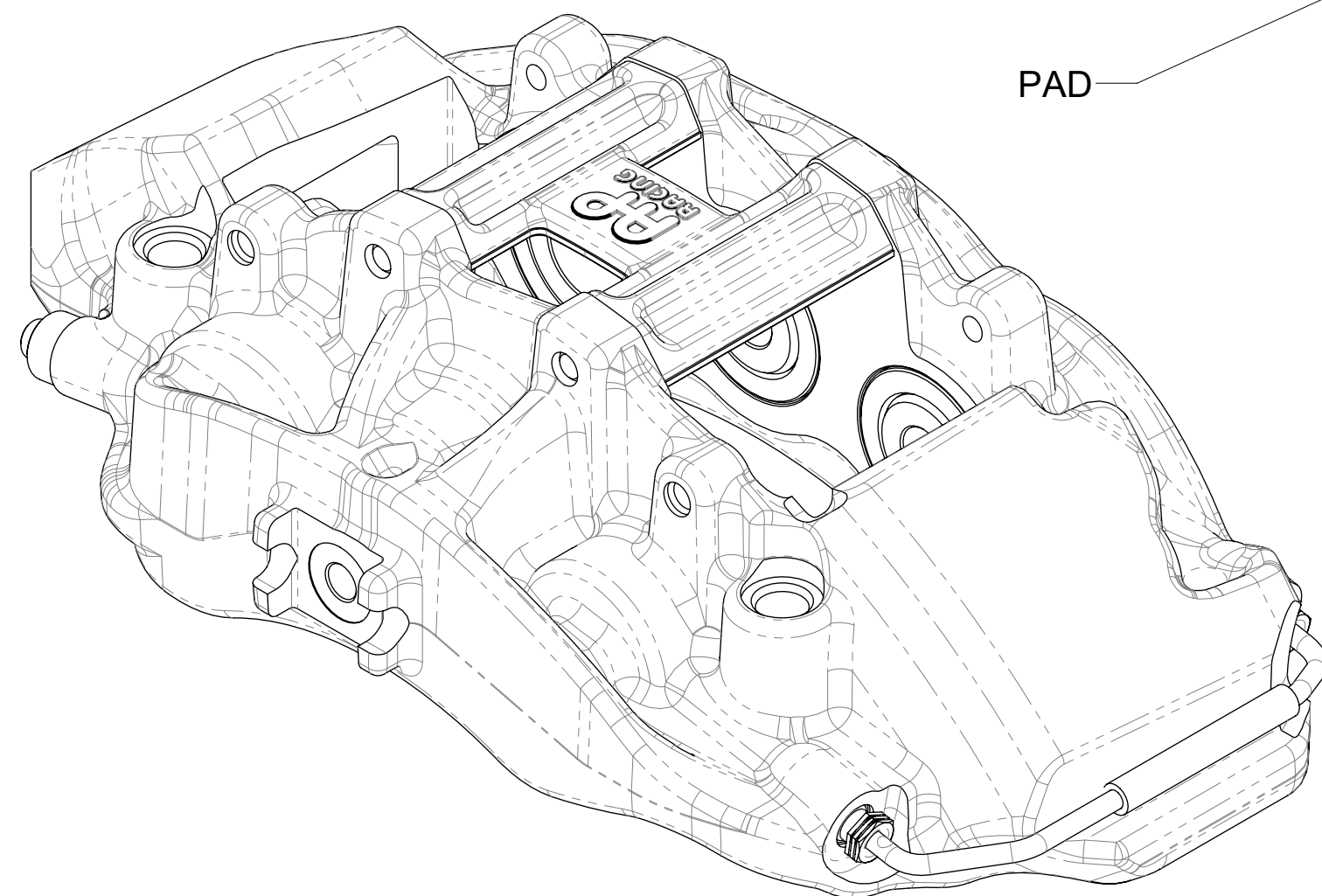
THIS DRAWING IS CONFIDENTIAL AND IS SUPPLIED ON THE EXPRESS CONDITION THAT IT SHALL NOT BE LOANED OR COPIED OR DISCLOSED TO ANY OTHER PERSON OR USED FOR ANY OTHER PURPOSE WITHOUT THE WRITTEN CONSENT OF AP RACING LTD.



Tel: +44 024 7663 9595  
Fax: +44 024 7663 9559  
e-mail: [sales@apracing.co.uk](mailto:sales@apracing.co.uk)  
Web site: [HTTP://www.apracing.co.uk](http://www.apracing.co.uk)

AVAILABLE PART NUMBERS	
PART NUMBER	DESCRIPTION
CP9571-250##	RIGHT HAND TRAILING (BEHIND AXLE)
CP9571-350##	LEFT HAND TRAILING (BEHIND AXLE)
CP9571-450##	RIGHT HAND LEADING (IN FRONT OF AXLE)
CP9571-550##	LEFT HAND LEADING (IN FRONT OF AXLE)
## = COLOUR CODE	
FOR AVAILABLE COLOURS AND FURTHER TECHNICAL INFORMATION PLEASE REFER TO THE <b>PRODUCT CATALOGUE, <a href="http://APRACING.COM">APRACING.COM</a> OR CUSTOMER SERVICES</b>	

MAXIMUM WORKING CALIPER PRESSURE	170 Bar (2450 Psi)
----------------------------------	--------------------



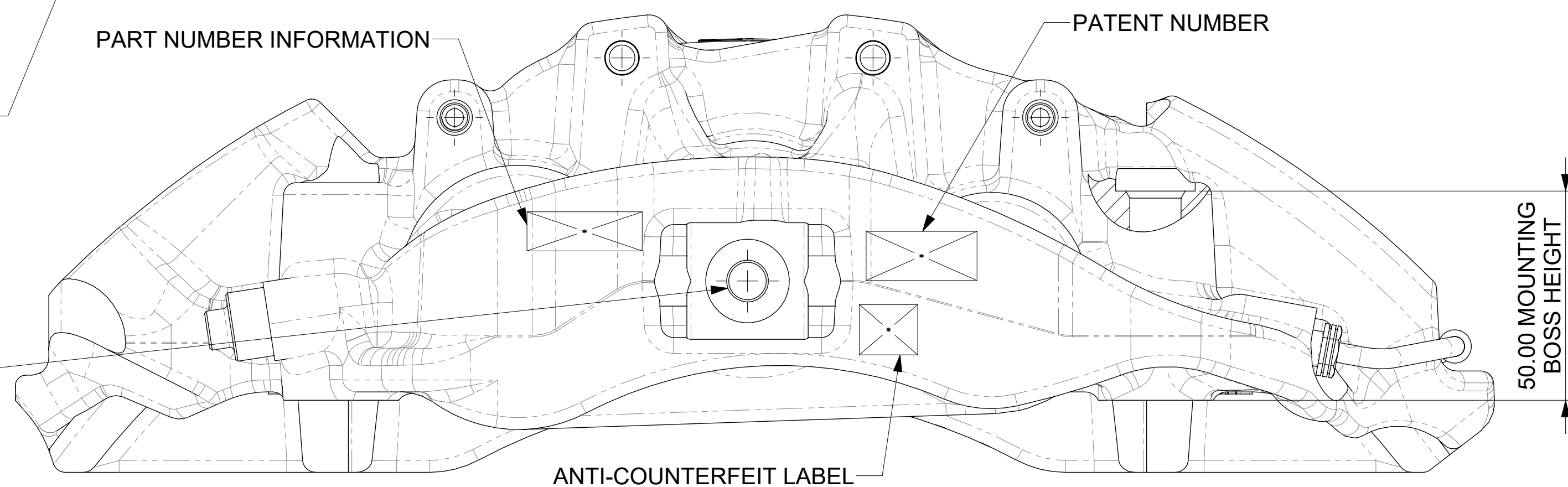
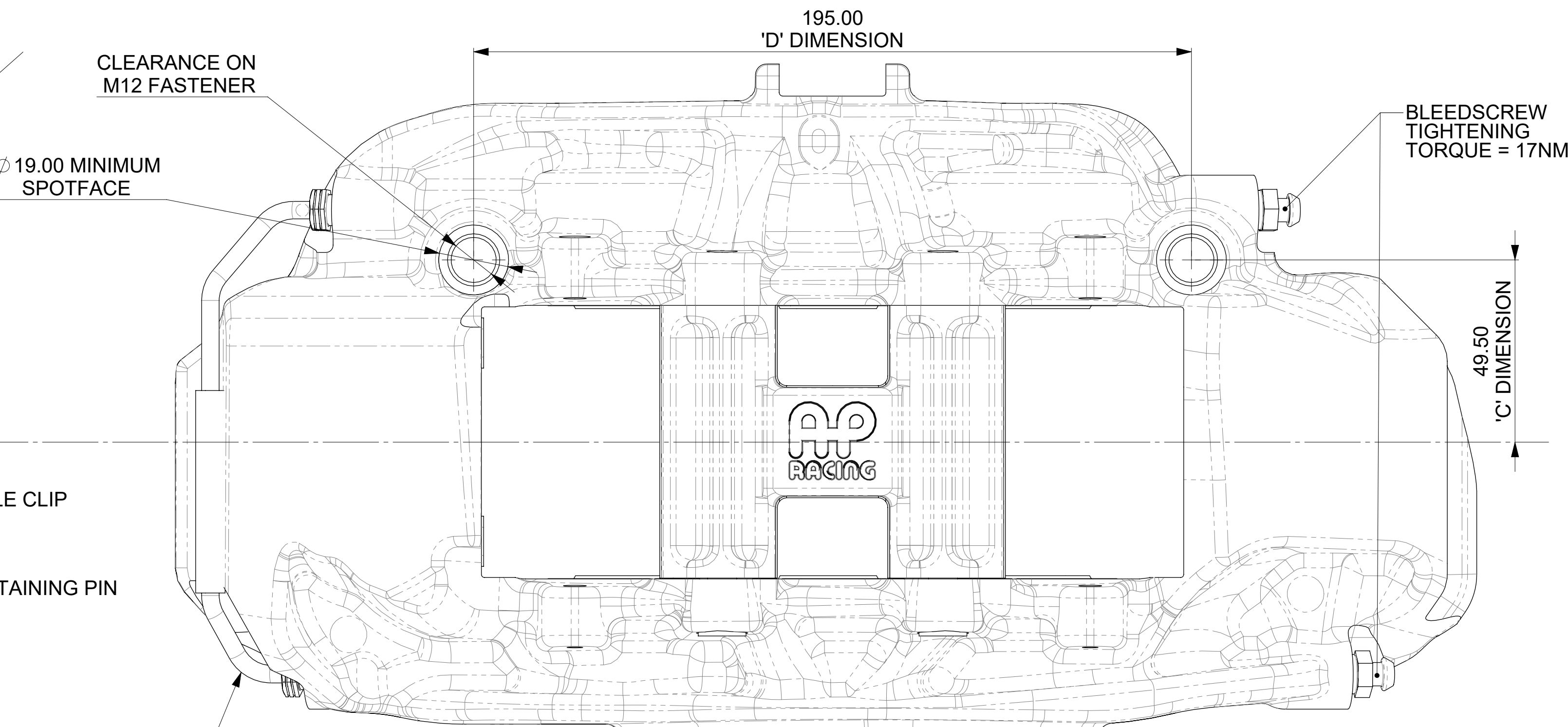
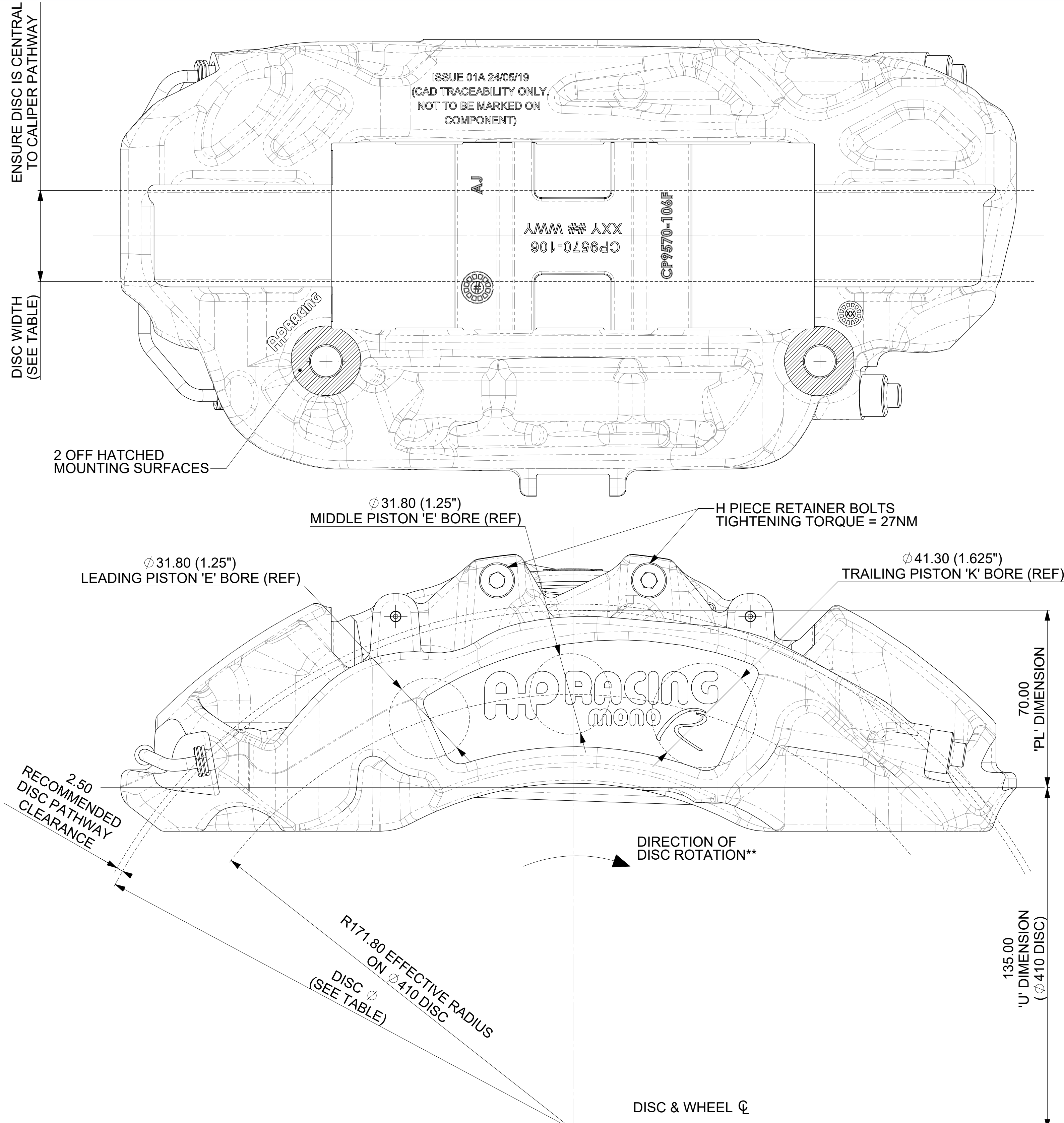
**CAUTION** - THE EXTERNAL PIPE IS A NON-SERVICEABLE ITEM AND MUST NOT BE TAMPERED WITH UNDER ANY CIRCUMSTANCES.

FEED PORT M10 x 1.0  
9.50 MIN FULL THREAD

TYPICAL TIGHTENING TORQUE:

- FITTING WITH ONE COPPER
- FITTING WITH TWO COPPER

RESULTING MAX TORQUE MUST NOT EXCEED 30NM.



Issue No.	Alterations		Zone	Initials
	Date & No.	Particulars		
01	06/06/2019 R4501_05	FIRST ISSUE	#	DF
02	31/10/2019 R4501_15	COMPUTABLE DISC TABLE REMOVED	02H	DF
		CALIPER MAX GVV TABLE ADDED	02H	
		LASER ETCHING DETAILS & ANTI-COUNTERFEIT LABEL LOCATION ADDED	14C 18C 16A	
03	08/11/2019 R4501_16	CALIPER MAX GVV TABLE UPDATED	02H	DF
		CALIPER MAX WORKING PRESSURE UPDATED WAS 130 BAR NOW 220 BAR	03G	
04	19/08/2022 R5010_02	'AVAILABLE COLOURS' REMOVED FROM SPEC TABLE.	M3	DKS
05	02/10/2025 WF-004908_01	CALIPER MAX GVV TABLE UPDATED	2H	JP
		CALIPER MAX WORKING PRESSURE UPDATES WAS 220 BAR NOW 170BAR	3G	

SCALE 1:1	SHEET 1 OF 1
-----------	--------------

DRAWN	J.HALEY
-------	---------

APPROVED

DERIVED FROM CP9995-1CD

TITLE

## 6 PISTON HPK MONOBI OC CAL IPER

Ø31.80xØ31.80xØ41.30 PISTON SIZES

DRG NO.	CP9571-1CD
---------	------------