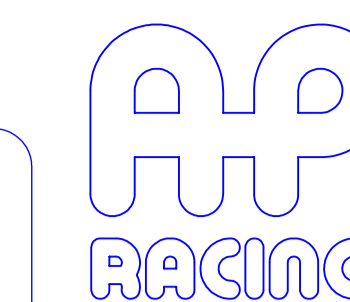


# B1 INSTALLATION DRAWING

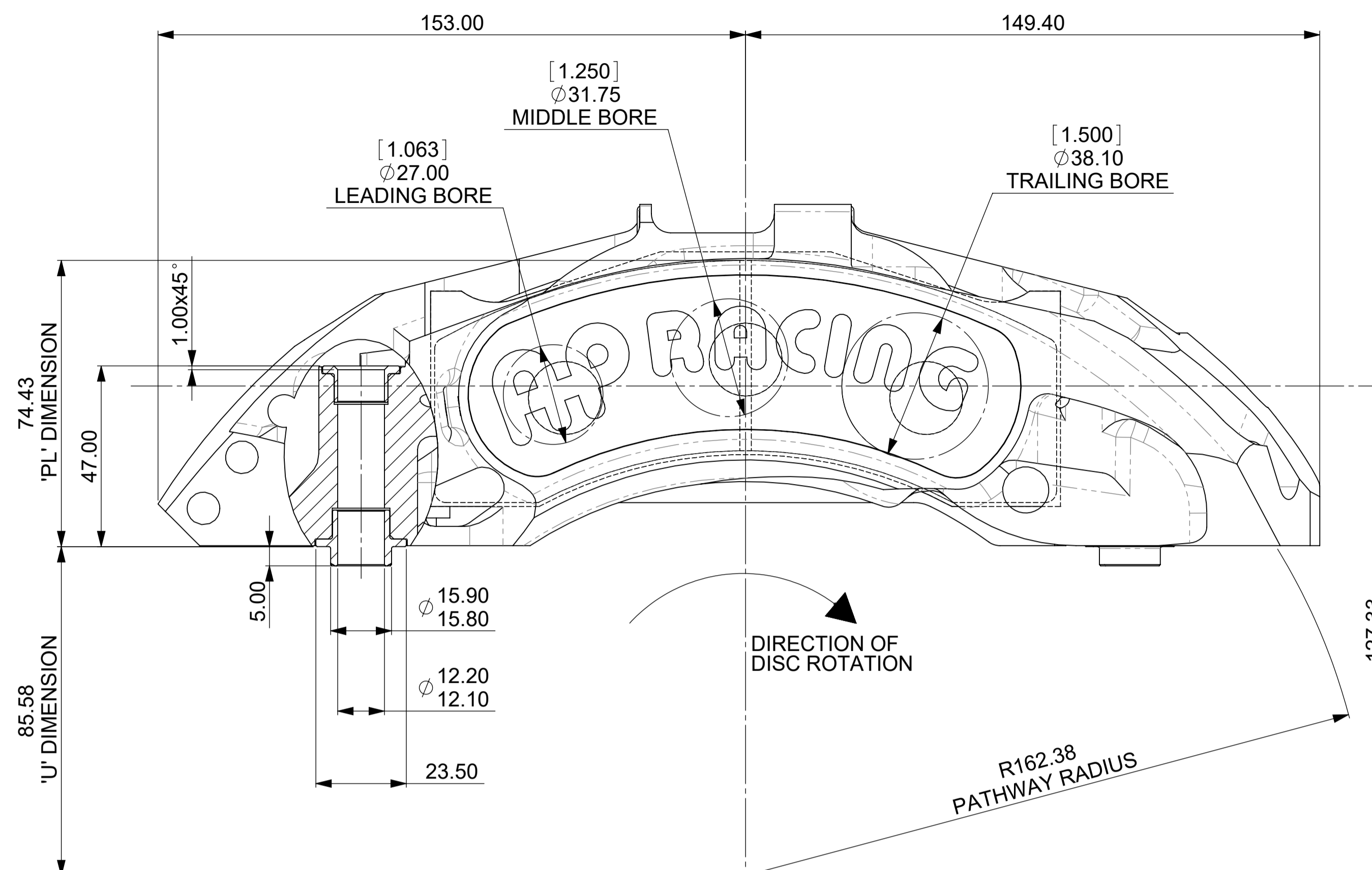
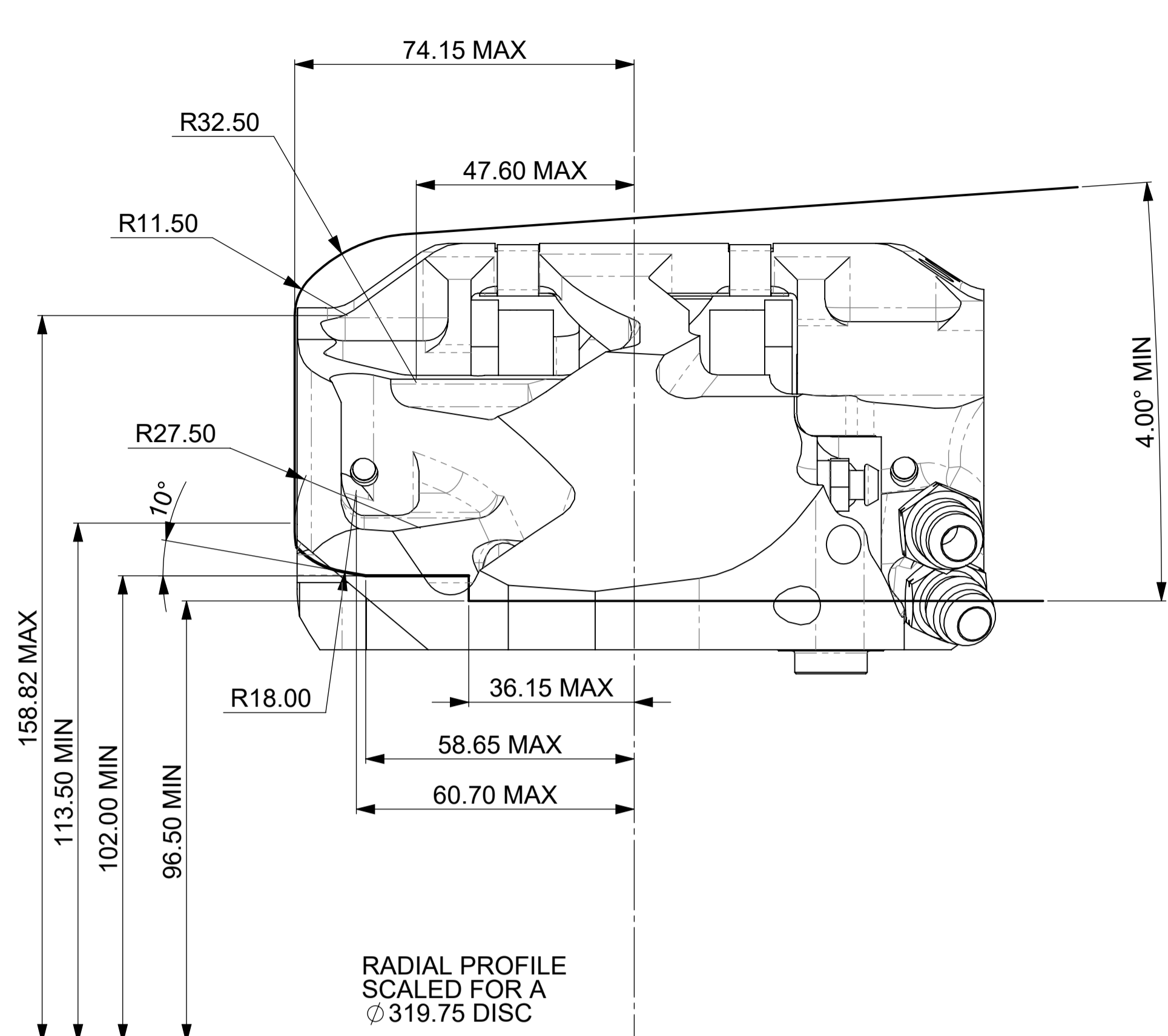
IF THIS DOCUMENT IS PRINTED IN HARDCOPY, IT IS FOR INFORMATION USE ONLY AND THEREFORE IS NOT SUBJECT TO UPDATING CONTROLS. ALWAYS REFER TO SOLIDWORKS VIEWER FOR LATEST ISSUE



THIS DRAWING IS CONFIDENTIAL AND IS SUPPLIED ON THE EXPRESS CONDITION THAT IT SHALL NOT BE LOANED OR COPIED OR DISCLOSED TO ANY OTHER PERSON OR USED FOR ANY OTHER PURPOSE WITHOUT THE WRITTEN CONSENT OF AP RACING LTD.



**AP Racing**  
 Whelery Road  
 CV3 4LB  
 Tel: +44 024 7663 9595  
 Fax: +44 024 7663 9559  
 e-mail: sales@apracing.co.uk  
 Web site: HTTP://www.apracing.com



**GENERAL DESCRIPTION**  
 LIQUID COOLED 6 PISTON DIFFERENTIAL BORE CALIPER TO SUIT UP TO 319.75 x 32.0 IRON DISC. THE CALIPERS INCLUDE HIGH TEMPERATURE SEALS & WIPER SEALS.

**APPLICATION**  
 RALLY RAID CALIPER

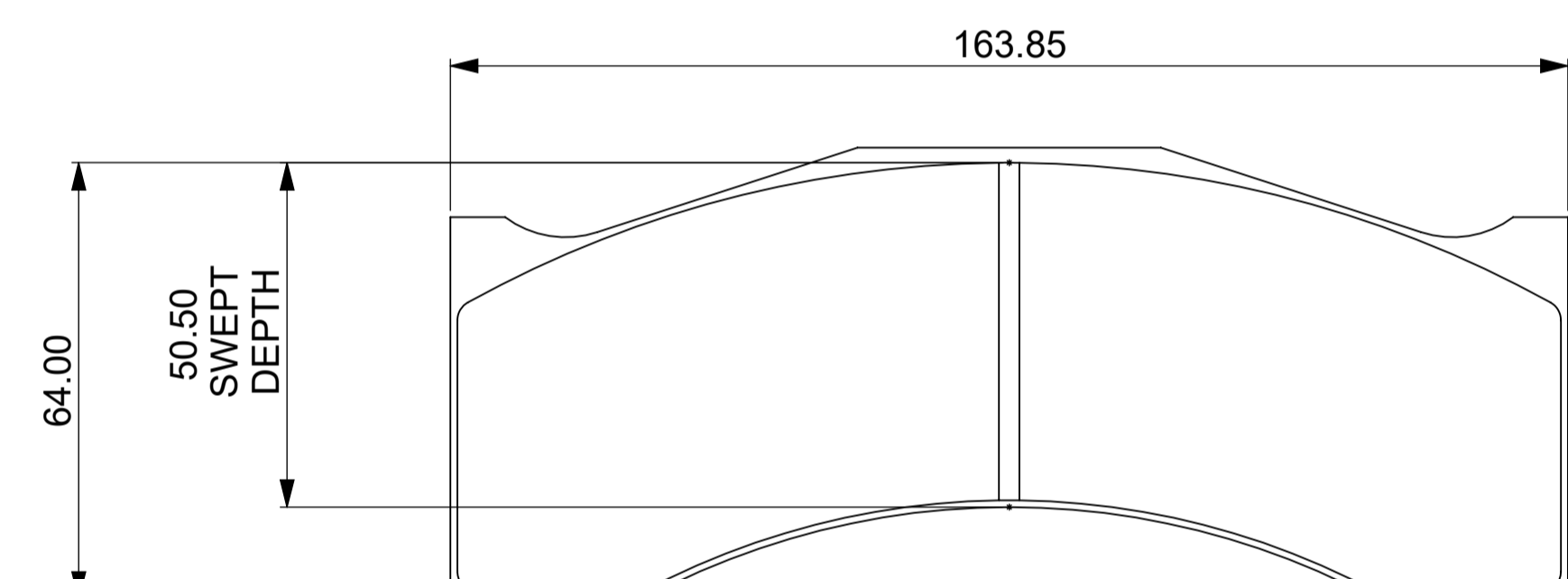
**TECHNICAL INFORMATION**  
 TOTAL PISTON AREA: 50cm<sup>2</sup>  
 PISTON MATERIAL: STAINLESS STEEL  
 BODY MATERIAL: ALUMINIUM ALLOY  
 ASSEMBLY WEIGHT (LESS PADS): 2.9kg (EST)  
 ANTI-KNOCK BACK SPRINGS: 7lbs (AS STANDARD)

**INSTALLATION INFORMATION**  
 DISC & CALIPER MOUNTING TOLERANCES TO BE SUCH THAT THE DISC IS CENTRAL TO THE CALIPER TO WITHIN ±0.5mm.  
 DISC DIAMETRAL CLEARANCE SHOULD BE 2.5mm NOMINAL FROM DISC O/D TO PATHWAY.

**KEY TO DIMENSIONS**  
 'PL' DIMN : TOP OF PAD MATERIAL TO MOUNTING BOSS FACE, WITH PAD SITTING DOWN ON LEDGE.  
 'U' DIMN : WHEEL CENTRE LINE TO CALIPER MOUNTING BOSS FACE = (DISC Ø/2) - PL DIMN

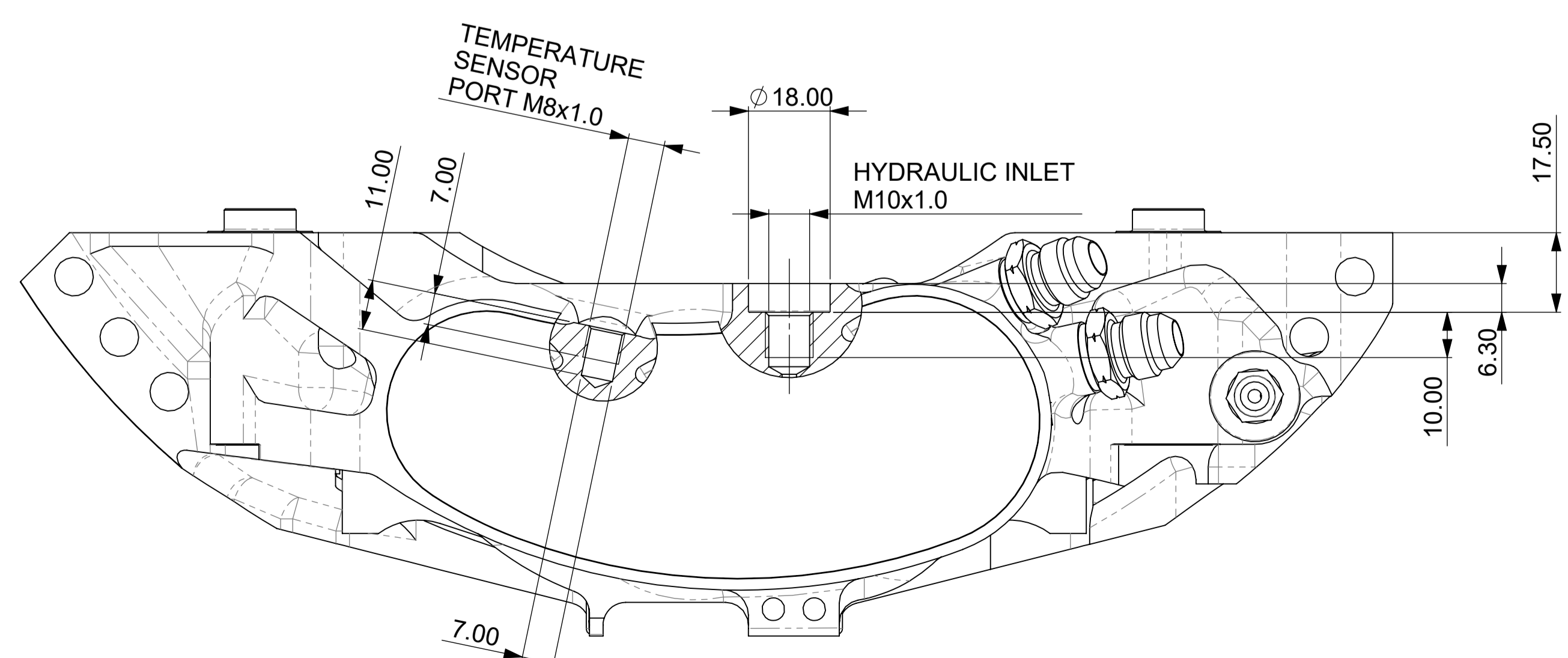
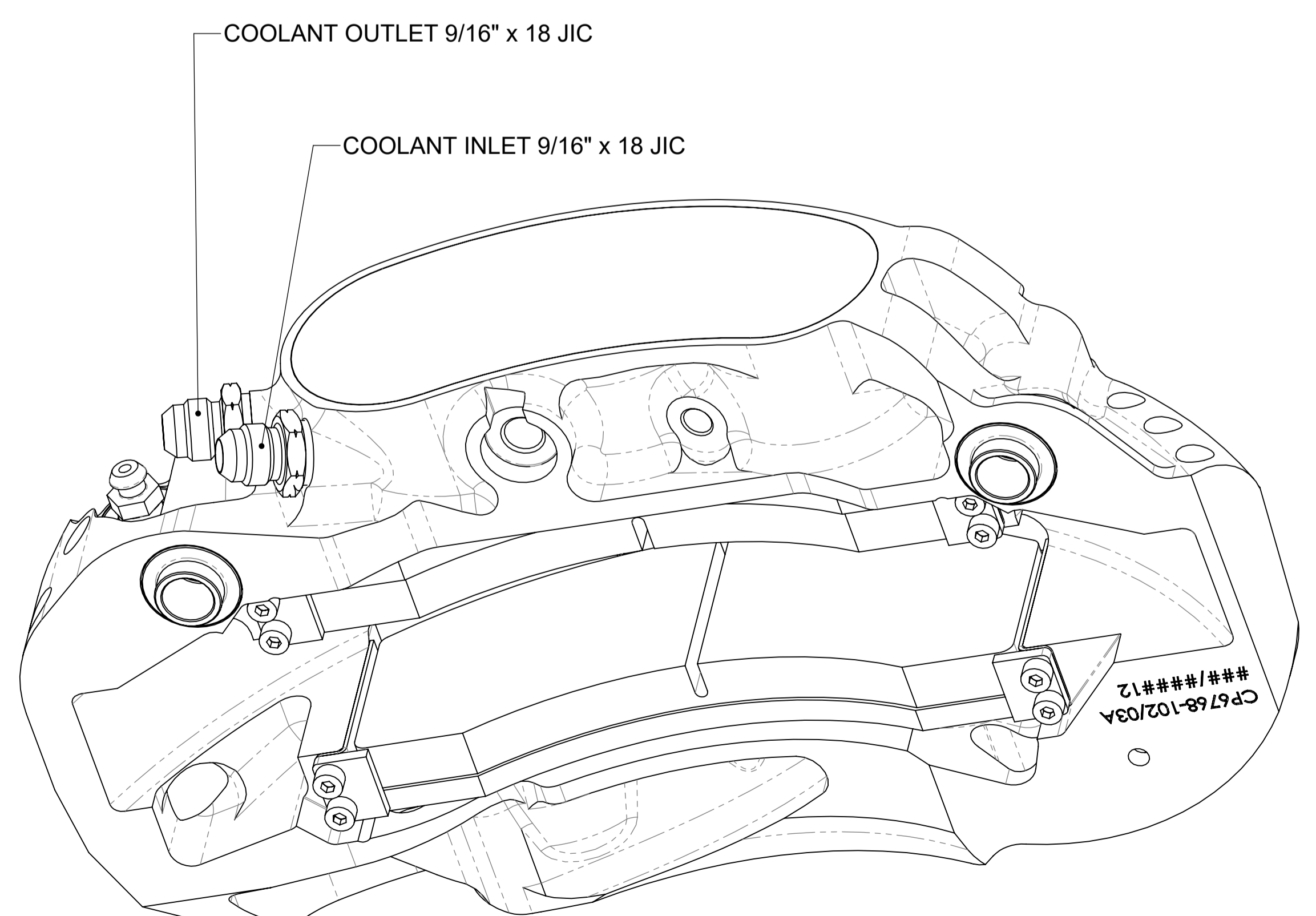
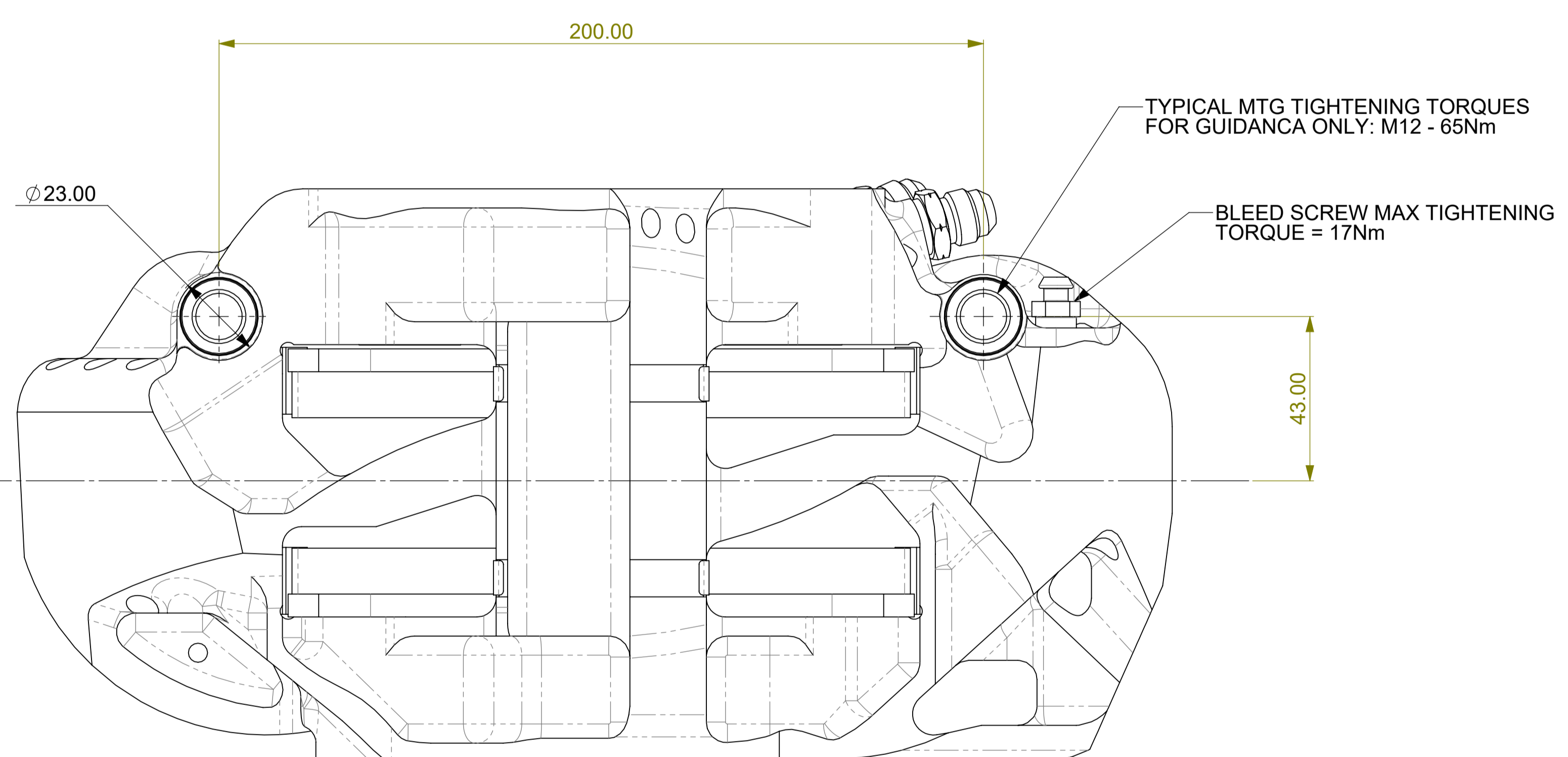
AP RACING TECHNICAL SECTION WILL BE PLEASED TO ADVISE ON THE MOST SUITABLE EQUIPMENT FOR ANY PARTICULAR APPLICATION.

**CALIPER PART NUMBERS**  
 CP6768-2S7L - RIGHT HAND TRAILING (BEHIND AXLE)  
 CP6768-3S7L - LEFT HAND TRAILING (BEHIND AXLE)  
 CP4518-CEJ:RAID - SEAL REPAIR KIT



**CP6766D50 PAD**

PAD THICKNESS - 18.0 mm  
 PAD AREA - 81.9 cm<sup>2</sup>  
 PAD VOLUME - 147.42 cm<sup>3</sup>



Alterations		Zone	Initials
Issue No	Date & No.	Particulars	#
1	23/04/10 B5906	FIRST ISSUE	JH
2	30/04/10 B5906:04	TEMP SENSOR PORT DETAIL ADDED	C10 JH
3	10/02/20	RADIAL PROFILE CORRECTED	TMG

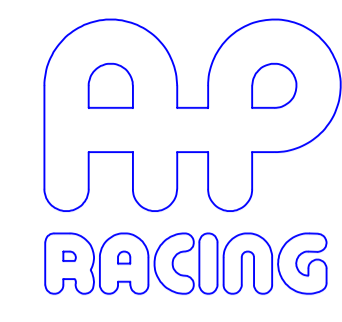
SCALE 1:1	SHEET 1 OF 2
DRAWN	jheritage
APPROVED	
DERIVED FROM	
TITLE	
6-POT RALLY RAID CALIPER	
DRG NO.	cp6768-1cd

**B1** **INSTALLATION DRAWING**

IF THIS DOCUMENT IS PRINTED IN HARDCOPY, IT IS FOR INFORMATION USE ONLY AND THEREFORE IS NOT SUBJECT TO UPDATING CONTROLS. ALWAYS REFER TO SOLIDWORKS VIEWER FOR LATEST ISSUE

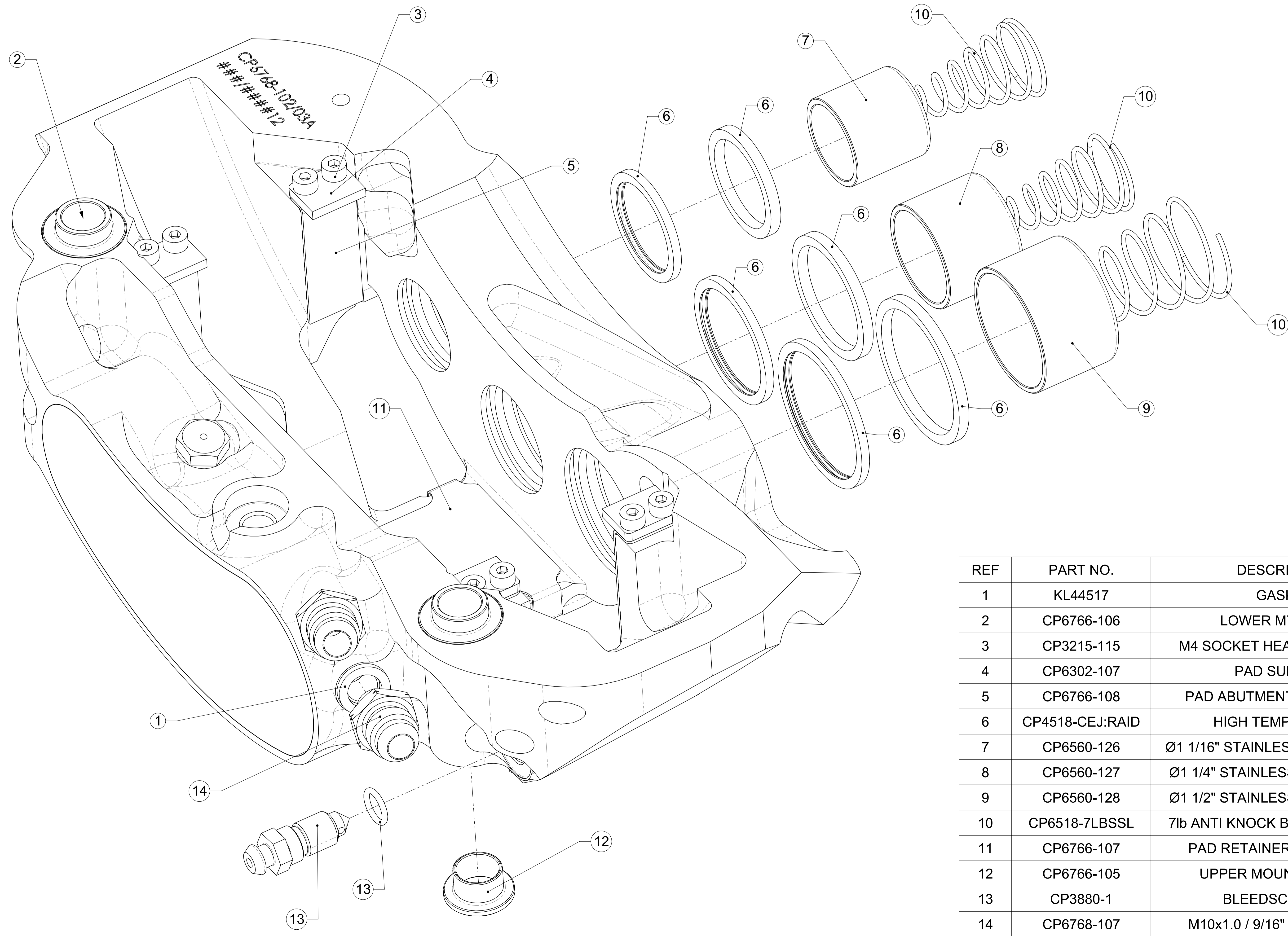


THIS DRAWING IS CONFIDENTIAL AND IS SUPPLIED ON THE EXPRESS CONDITION THAT IT SHALL NOT BE LOANED OR COPIED OR DISCLOSED TO ANY OTHER PERSON OR USED FOR ANY OTHER PURPOSE WITHOUT THE WRITTEN CONSENT OF AP RACING LTD.



**AP Racing**  
 Wheler Road  
 Coventry  
 CV3 4LB  
 Tel: +44 024 7663 9595  
 Fax: +44 024 7663 9559  
 e-mail: sales@apracracing.co.uk  
 Web site: HTTP://www.apracracing.com

Issue No.	Date & No.	Particulars	Zone	Initials
-----------	------------	-------------	------	----------



REF	PART NO.	DESCRIPTION	QTY
1	KL44517	GASKET	2
2	CP6766-106	LOWER MTG BOSS	2
3	CP3215-115	M4 SOCKET HEAD CAP SCREW	8
4	CP6302-107	PAD SUPPORT	4
5	CP6766-108	PAD ABUTMENT WEARPLATE	4
6	CP4518-CEJ:RAID	HIGH TEMP SEAL KIT	1
7	CP6560-126	Ø1 1/16" STAINLESS STEEL PISTON	2
8	CP6560-127	Ø1 1/4" STAINLESS STEEL PISTON	2
9	CP6560-128	Ø1 1/2" STAINLESS STEEL PISTON	2
10	CP6518-7LBSSL	7lb ANTI KNOCK BACK SPRING KIT	1
11	CP6766-107	PAD RETAINER WEARPLATE	4
12	CP6766-105	UPPER MOUNTING BOSS	2
13	CP3880-1	BLEEDSCREW KIT	1
14	CP6768-107	M10x1.0 / 9/16" JIC ADAPTOR	2

SCALE 1:2 SHEET 2 OF 2

DRAWN jheritage

APPROVED

DERIVED FROM

**TITLE**  
 6-POT RALLY RAID CALIPER

DRG NO. cp6768-1cd