

B1 INSTALLATION DRAWING

IF THIS DOCUMENT IS PRINTED IN HARDCOPY, IT IS FOR INFORMATION USE ONLY AND THEREFORE IS NOT SUBJECT TO UPDATING CONTROLS. ALWAYS REFER TO SOLIDWORKS VIEWER FOR LATEST ISSUE



THIS DRAWING IS CONFIDENTIAL AND IS SUPPLIED ON THE EXPRESS CONDITION THAT IT SHALL NOT BE LOANED OR COPIED OR DISCLOSED TO ANY OTHER PERSON OR USED FOR ANY OTHER PURPOSE WITHOUT THE WRITTEN CONSENT OF AP RACING LTD.

AP RACING
 Wheler Road
 Coventry
 CV3 4LB
 Tel: +44 024 7663 9595
 Fax: +44 024 7663 9559
 e-mail: sales@apracing.co.uk
 Web site: HTTP://www.apracing.com

GENERAL DESCRIPTION
 6 PISTON DIFFERENTIAL BORE CALIPER TO SUIT UP TO
 Ø 380mm x 35.56mm MAX / 32mm MIN THICK IRON DISC.

TYPICAL APPLICATION - GENERAL USE CALIPER

TECHNICAL INFORMATION & INSTALLATION DATA
 TOTAL PISTON AREA: 50cm²
 BODY MATERIAL: ALUMINIUM ALLOY
 PISTON MATERIAL: STAINLESS STEEL
 ASSEMBLY WEIGHT (LESS PADS): 2.78Kg

INSTALLATION INFORMATION
 DISC & CALIPER MOUNTING TOLERANCES TO BE SUCH THAT THE DISC IS CENTRAL TO THE CALIPER TO WITHIN ±0.5mm.
 DISC DIAMETRAL CLEARANCE SHOULD BE 2.5mm NOMINAL FROM DISC O/D TO PATHWAY.

KEY TO DIMENSIONS
 *PL - DIMN : TOP OF PAD MATERIAL TO MOUNTING BOSS FACE, WITH PAD SITTING DOWN ON LEDGE.
 *U - DIMN : WHEEL CENTRE LINE TO CALIPER MOUNTING BOSS FACE = (DISC Ø/2) - PL DIMN

AP RACING TECHNICAL SECTION WILL BE PLEASED TO ADVISE ON THE MOST SUITABLE EQUIPMENT FOR ANY PARTICULAR APPLICATION.

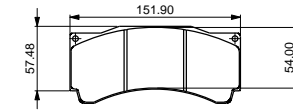
CALIPER PART NUMBERS
 CP9660-254L - RIGHT HAND
 CP9660-354L - LEFT HAND

EXAMPLE PART # - CP9660-2 S (SIDE FEED) 4 (4lb AKB SPRINGS) L (STAINLESS PISTONS).

PADS
 THE CORRECT PAD FAMILY FOR THIS CALIPER IS CP3905D54. PADS SHOULD BE ORDERED SEPARATELY.

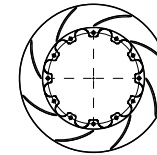
REPLACEMENT SEAL KIT
 SEAL KIT (VERY HIGH TEMPERATURE) CP8518-CEJ

RECOMMENDED DISC AND PAD OPTIONS AVAILABLE
 D54 DISC AND PAD COMBINATION



CP3905D54 FAMILY
 AS CP3894D54 WITH TAG REMOVED

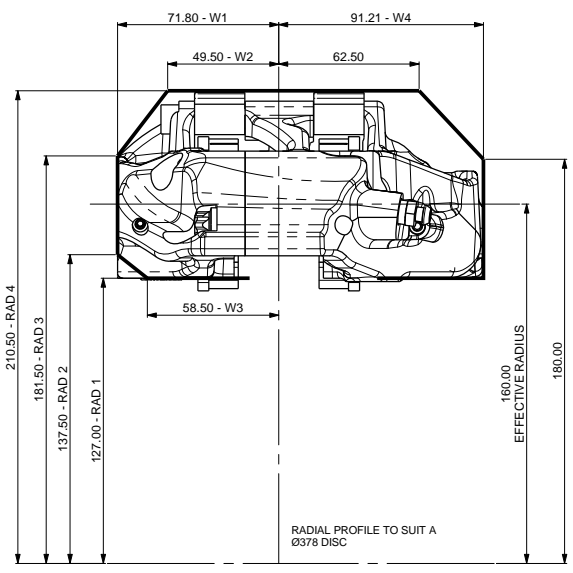
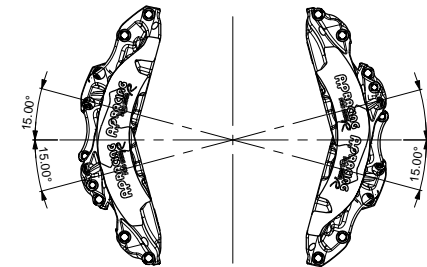
PAD THICKNESS 18.0mm
 PAD AREA 77.44cm²
 PAD VOLUME 101.6cm³



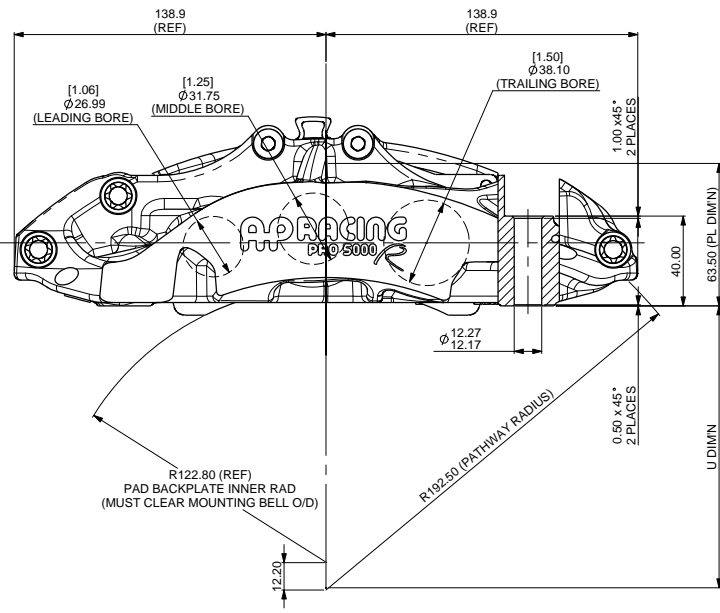
CP5772-1032/3C/G8 Ø378x36 12F 72v 7.4Kg
 CP5000-218/9C/G8 Ø356x32 12B 72v 6.2Kg

OPTIMUM BLEED POSITIONING

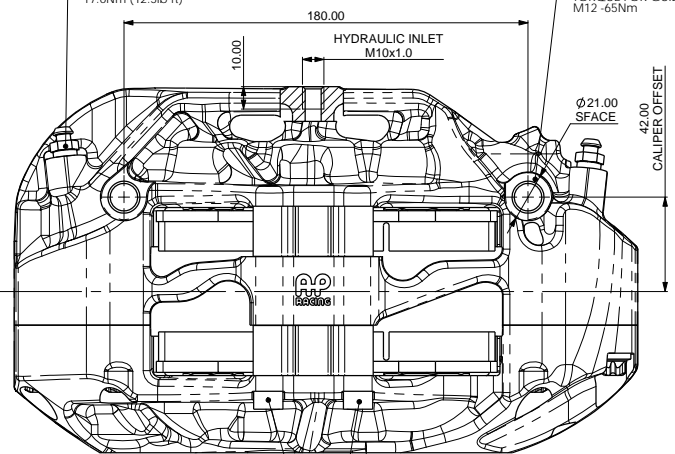
FOR OPTIMUM BLEED, THE CALIPER SHOULD BE INSTALLED IN THE LEADING OR TRAILING POSITION BETWEEN THE ANGLES SHOWN



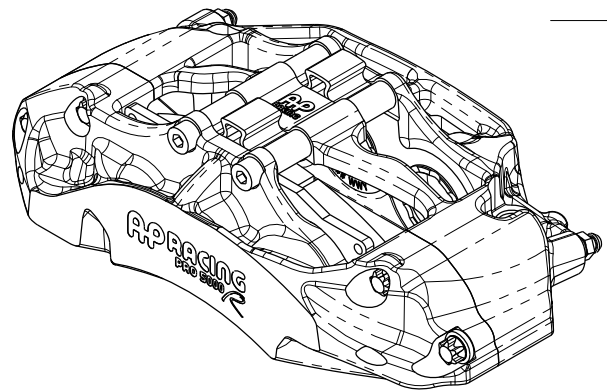
DISC Ø	EFF RAD	RAD 1	RAD 2	RAD 3	RAD 4	W1	W2	W3	W4
356	149.00	116.00	126.50	171.50	200.75	71.80	49.50	58.50	91.21



BLEED SCREW TIGHTENING TORQUE 17.0Nm (12.5lb ft)
 TYPICAL MTG TIGHTENING TORQUE FOR GUIDANCE ONLY: M12 - 65Nm



PAD RETAINING BOLTS SHOULD BE TIGHTENED TO A TORQUE OF 27.1Nm (20lb ft)



Issue No	Alterations			Zone	Initials
	Date & No.	Particulars			
1	29/04/14 B6956	FIRST ISSUE			NJS
2	13/11/14 B6956	DISC AND PAD OPTIONS UPDATED			CH
3	20/11/14 B6956	RADIAL PROFILE UPDATED RADIAL PROFILE TABLE ADDED DISC OPTIONS UPDATED			CH
4	05/02/15 B6956	MAX DISC THICKNESS UPDATED CP5000-218/9C/G8 DETAILS UPDATED			CH
5	23/02/15 B6956	PAD NOTES UPDATED			CH
6	15/07/15 B6956	SHEET 2 RE CP3 SCREW WAS CP3796-121ST NOW CP3796-1251			THS
7	17/07/2017 B7726_01	CHANGED TORQUE SPECIFICATION NOTE			C10 SGW
8	11/02/20 RAC23374	SPARES LIST TABLE CORRECTED REF NR. 9 CP3596-112ST WAS CP3796-112ST REF NR. 10 CP9660-121A WAS CP9660-113			GN

SCALE 1:1 SHEET 1 OF 2
 DRAWN N STEVENS
 APPROVED
 DERIVED FROM
 TITLE
 6 PISTON PRO 5000 R
 CALIPER INSTALLATION DRAWING
 DRG NO. CP9660-1CD

B1 INSTALLATION DRAWING

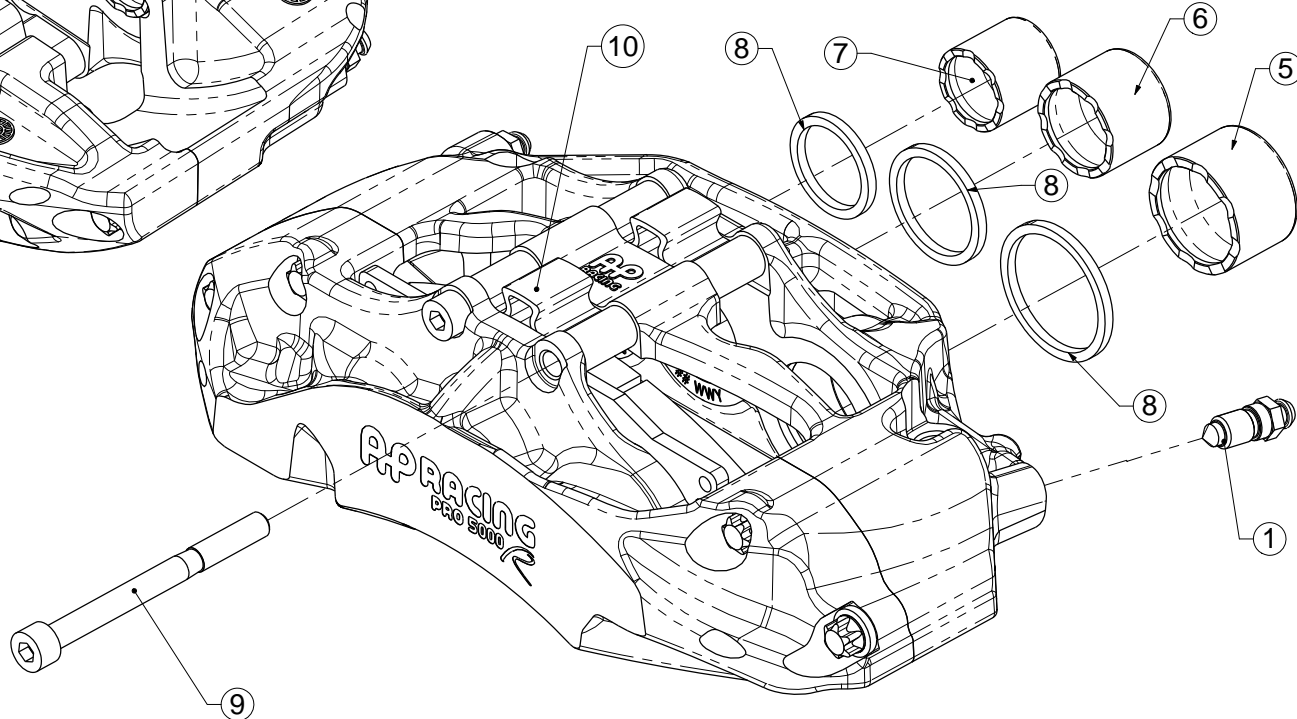
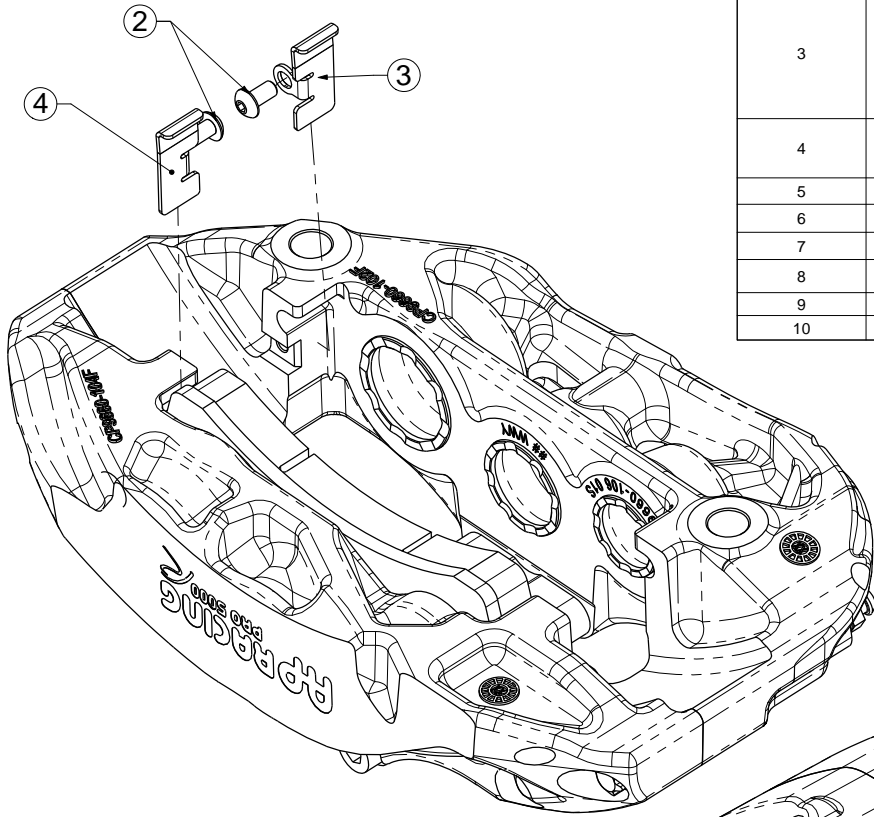
IF THIS DOCUMENT IS PRINTED IN HARDCOPY IT IS FOR INFORMATION USE ONLY AND THEREFORE IS NOT SUBJECT TO UPDATING CONTROLS. ALWAYS REFER TO SOLIDWORKS VIEWER FOR LATEST ISSUE



THIS DRAWING IS CONFIDENTIAL AND IS SUPPLIED ON THE EXPRESS CONDITION THAT IT SHALL NOT BE LOANED OR COPIED OR DISCLOSED TO ANY OTHER PERSON OR USED FOR ANY OTHER PURPOSE WITHOUT THE WRITTEN CONSENT OF AP RACING LTD.

AP RACING
 AP Racing
 Wheler Road
 Coventry
 CV3 4LB
 Tel: +44 024 7663 9595
 Fax: +44 024 7663 9550
 e-mail: sales@apracing.co.uk
 Web site: HTTP://www.apracing.com

REF	PART NUMBER	DESCRIPTION	QTY / CALIPER	FITTING NOTES
1	CP3880-1	M10 BLEED SCREW KIT	2	TIGHTENING TORQUE - 17Nm
2	CP9440-116	M5 BUTTON SCREW	2	APPLY A 1-2MM DROP OF LOCTITE 270 TO THE 2ND FROM LAST THREAD WHEN FITTING. TIGHTENING TORQUE - 3.7Nm
3	CP9660-110	RH WEARPLATE	1	APPLY 736 RTV SILICONE SPARINGLY BEHIND THE ABUTMENT PLATE ENSURING ENTIRE CONTACT FACE IS COVERED. APPLY PRESSURE TO ABUTMENT PLATE WHEN FITTING TO ENSURE MINIMUM FILM THICKNESS AND AVOID ANY GAP.
4	CP9660-111	LH WEARPLATE		ENSURE ABUTMENT PLATE SITS CORRECTLY AGAINST CALIPER BODY BEFORE FITTING RETAINING SCREW.
5	CP9660-116	Ø1.50" SST PISTON	2	
6	CP9660-115	Ø1.25" SST PISTON	2	
7	CP9660-114	Ø1.06" SST PISTON	2	
8	CP8518-CEJ	PISTON SEAL KIT	1	REFER TO PUBLICATION REF: P14.290 & P14.220
9	CP3596-112ST	M8 CAP SCREW	2	TIGHTENING TORQUE - 13.1Nm
10	CP9660-121A	PAD RETAINER PIECE	2	



Issue No.	Alterations		Zone	Initials
	Date & No.	Particulars		

SCALE 1:1	SHEET 2 OF 2
DRAWN	N STEVENS
APPROVED	
DERIVED FROM	
TITLE	
6 PISTON PRO 5000 R	
CALIPER INSTALLATION DRAWING	
DRG NO.	CP9660-1CD