

A1 INSTALLATION DRAWING

IF THIS DOCUMENT IS PRINTED IN HARDCOPY, IT IS FOR INFORMATION USE ONLY AND THEREFORE IS NOT SUBJECT TO UPDATING CONTROLS. ALWAYS REFER TO SOLIDWORKS VIEWER FOR LATEST ISSUE



THIS DRAWING IS CONFIDENTIAL AND IS SUPPLIED ON THE EXPRESS CONDITION THAT IT SHALL NOT BE LOANED OR COPIED OR DISCLOSED TO ANY OTHER PERSON OR USED FOR ANY OTHER PURPOSE WITHOUT THE WRITTEN CONSENT OF AP RACING LTD.

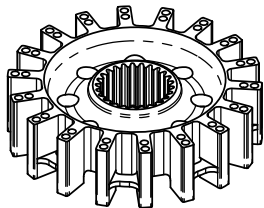
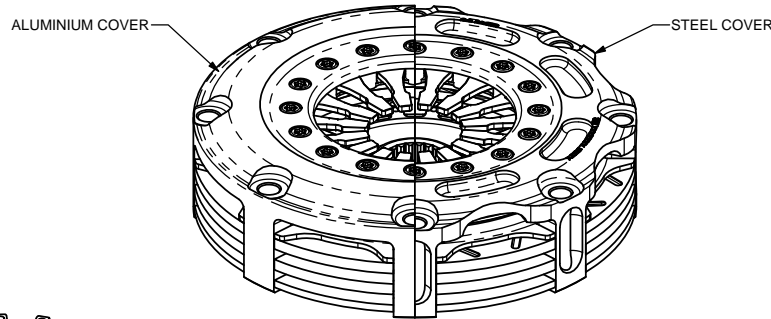


AP Racing
Wheler Road
Coventry
CV3 4LB

Tel: +44 (0) 24 7663 9595
Fax: +44 (0) 24 7663 9559
e-mail: engineering@apracings.co.uk
Web site: http://www.apracings.com

© AP Racing Ltd. 2005

CP8662 FAMILY, Ø138mm CARBON / CARBON CLUTCH ASSEMBLY WITH A CUSHION PRESSURE PLATE SYSTEM



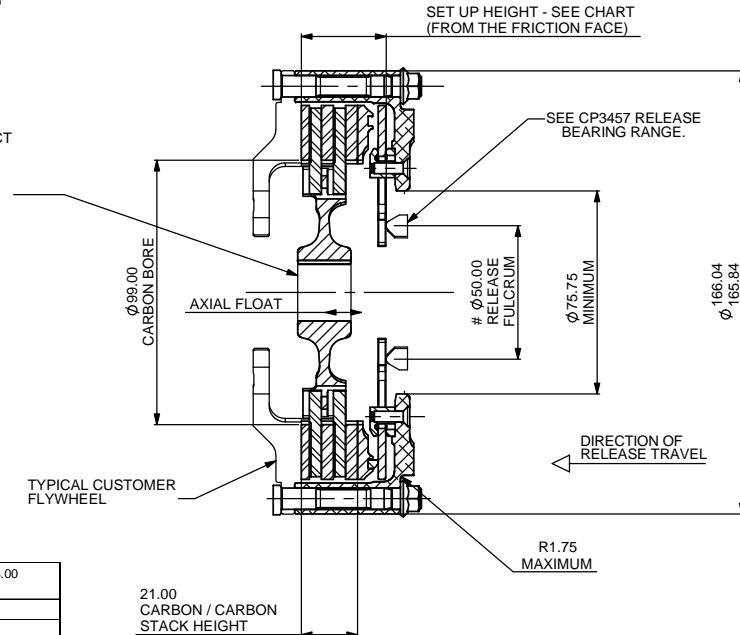
NOTE - IN THE MAIN TABLE DETAILS ARE CALCULATED FOR A Ø50.00 RELEASE FULCRUM. SEE THE SIDE TABLE FOR SPECIFICATIONS WHEN USING A Ø38.00 RELEASE FULCRUM

SET UP HEIGHT - SEE CHART (FROM THE FRICTION FACE)

HUB PART No. SPLINE
CP5142-102S 1.00" x 23T
CP5142-103S 0.875" x 20T

OTHER SPLINE SIZES ARE AVAILABLE. PLEASE CONTACT AP RACING FOR DETAILS

FOR HUB ENVELOPE SEE SHEET 2.



SPECIFICATION WHEN USING A Ø38.00 RELEASE FULCRUM		
RELEASE LOAD	BH	NH
Max. Peak Worn (N)	5200	4500
At Travel (N)	4300	3400
WEAR IN (See Note)	0.50	0.50
Set Up Height New	33.18	32.78
	31.50	31.10
Set Up Height Worn	34.67	34.27
(Set Up Height is calculated from the flywheel friction face.)		
Release Ratio	2.94	2.94

RELEASE TRAVEL TO BE LIMITED TO 4.00mm MAXIMUM

CP8662 FAMILY

MAXIMUM DYNAMIC TORQUE CAPACITY			
(Nm)	487	411	
(ft.lb)	359	303	
RELEASE LOAD			
Max. Peak Worn (N)	5950	5500	
Max. Peak New (N)	5250	4050	
WEAR IN (See Note)			
	0.50	0.50	
Set Up Height New	32.97	32.57	
	31.45	31.05	
Set Up Height Worn	34.19	33.79	
(Set Up Height is calculated from the flywheel friction face.)			
Release Ratio	2.41	2.41	
	Aluminium Cover	Steel Cover	
Assembly Mass	1.81 kg		2.22 kg
Assembly Inertia	0.006145 kg.m ²		0.007970 kg.m ²
Estimated Driven Plate and Hub Inertia = 0.008171 Kgm ²			
PERFORMANCE SUFFIX			
	BH	NH	
For Reference			
Diaphragm Spring Rate	BUF	GRN	
Clutch Ratio	HIR	HIR	

MATERIAL SUFFIX	COVER MATERIAL	PRESSURE PLATE MATERIAL	CARBON / CARBON TYPE
01	ALUMINIUM	STEEL	NORMAL DUTY (S1)
13	STEEL	STEEL	NORMAL DUTY (S1)
22	ALUMINIUM	STEEL	MEDIUM DUTY (S6)
24	STEEL	STEEL	MEDIUM DUTY (S6)
28	ALUMINIUM	STEEL	MEDIUM DUTY (S9)
29	STEEL	STEEL	MEDIUM DUTY (S9)

FLYWHEEL TYPE		
	SUFFIX	COMMENTS
STANDARD FLAT FLYWHEEL	FP	FOR INSTALLATION DATA SEE SHEET 2
STANDARD STEPPED FLYWHEEL	SP	FOR INSTALLATION DATA SEE SHEET 2

Sample AP Racing Part No. **CP8662-BH01-SP**

WEAR IN
THIS CLUTCH HAS BEEN DESIGNED FOR THE WEAR IN INDICATED ABOVE, WHICH MUST BE COMPENSATED FOR BY USING PRESSURE PLATE "FULCRUM" FROM THE KITS DETAILED BELOW.
THE MAXIMUM CARBON STACK WEAR FOR THIS ASSEMBLY IS 4.00mm
SEE SHEET 2 FOR COMPLETE PRESSURE PLATE FULCRUM FITMENT DETAILS

	BH & NH		
STANDARD KIT 0.50 - 3.50 IN 0.50 STEPS	CP8662-6		
INTERMEDIATE KIT 0.25 - 3.25 IN 0.50 STEPS	CP8662-7		

ISSUE No.	Alterations			Zone	Initials
	Date & No.	Particulars	#		
1	18/01/11 C4025	FIRST ISSUE	#	JG	
2	22/03/11 C4025	RELEASE LOADS WERE 4900/4300. RELEASE TRAVEL WAS 3.80 RATIO WAS 2.94	#	JG	
3	06/04/11 C4025	NH SPEC AND ALT. Ø38.00 RELEASE FULCRUM SPEC ADDED.	#	JG	
4	22/02/12 C4258	FLAT FLYWHEEL DETAILS ADDED TO SHEET 2	#	JG	
5	08/01/13 C4414	DIAPHRAGM SPRING CHANGED TO THE LATEST FINGER FORM. ALUMINIUM COVER WEIGHT AND INERTIAS CHANGED IN LINE. STEEL COVER DETAILS ADDED. MATERIAL OPTION 27 DELETED. 24, 22 AND 13 ADDED.	#	JG	
6	15/03/13	INSTALLATION WIRE DETAILS ADDED TO THE FLAT FLYWHEEL OPTION	#	JG	
7	12/11/13 C4598	S9 CARBON OPTION ADDED	#	JG	
8	10/06/14	"FULCRUM" ADDED TO DATA TABLE	B13	JG	
9	25/11/15 C4940	"WH" SPECIFICATION ADDED	#	JG	
10	18/04/16 C4940	"WH" SPECIFICATION REMOVED	#	JG	

SCALE 1:1	SHEET 1 OF 2
DRAWN	Jeremy Govan
APPROVED	
DERIVED FROM	cp7902 / CP7142
TITLE Ø138 CARBON / CARBON CLUTCH ASSEMBLY	
DRG NO.	CP8662CD

A1 INSTALLATION DRAWING

IF THIS DOCUMENT IS PRINTED IN HARDCOPY, IT IS FOR INFORMATION USE ONLY AND THEREFORE IS NOT SUBJECT TO UPDATING CONTROLS. ALWAYS REFER TO SOLIDWORKS VIEWER FOR LATEST ISSUE



THIS DRAWING IS CONFIDENTIAL AND IS SUPPLIED ON THE EXPRESS CONDITION THAT IT SHALL NOT BE LOANED OR COPIED OR DISCLOSED TO ANY OTHER PERSON OR USED FOR ANY OTHER PURPOSE WITHOUT THE WRITTEN CONSENT OF AP RACING LTD.

AP Racing Ltd. 2005
 AP Racing Wheler Road Coventry CV3 4LB
 Tel: +44 (0) 24 7663 9595
 Fax: +44 (0) 24 7663 9559
 e-mail: engineering@apracings.co.uk
 Web site: http://www.apracings.com

(RECOMMENDED FOR CP4702 STUDS)

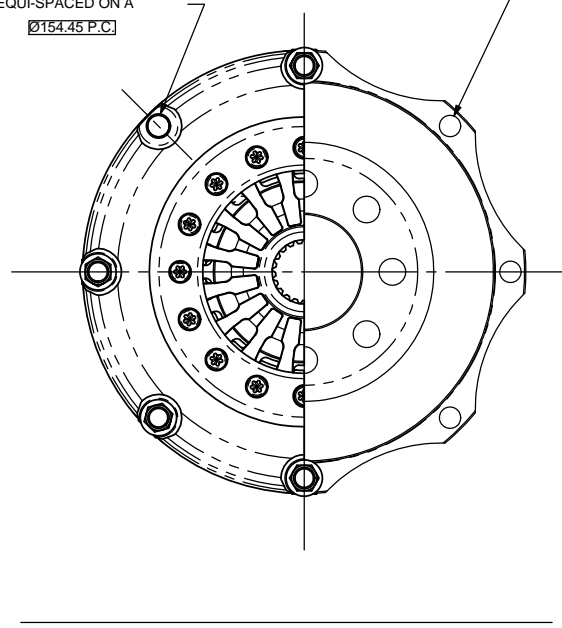
8 STUD MOUNTING HOLES

Ø8.020/8.005
 EQUI-SPACED ON A

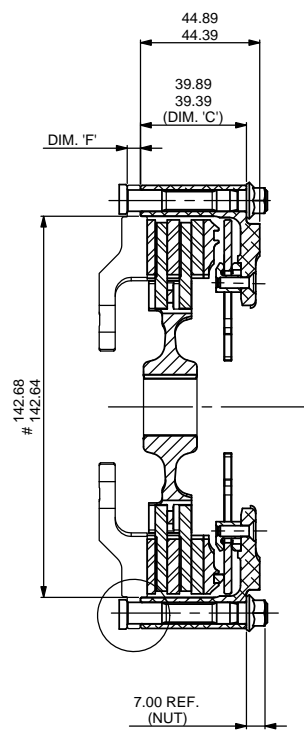
Ø154.45 P.C.

8 COVER HOLES Ø8.15/8.05

EQUI-SPACED ON A
 Ø154.45 P.C.



STEPPED FLYWHEEL - SUFFIX "SP"



FLYWHEEL DIMENSIONS

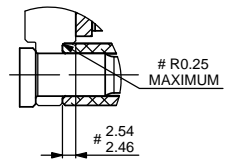
RECOMMENDED CLUTCH MOUNTING :
 (FOR ALL TYPES OF ASSEMBLY)
 M8 x 1.0, CP4702 FAMILY STUD AND
 K-LOCK NUT.
 TIGHTENING TORQUE : 19Nm (14 ft.lb)

LENGTH OF STUD REQUIRED TO BE
 CALCULATED THUS :

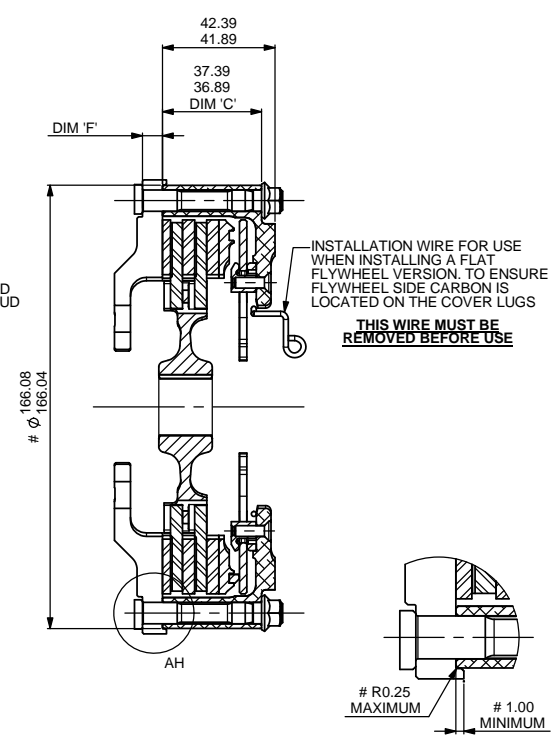
STUD LENGTH =
 DIMENSIONS 'C' + 'F' + NUT

THIS CALCULATED LENGTH TO BE ROUNDED
 UP TO THE NEXT AVAILABLE STANDARD STUD
 LENGTH.

FLYWHEEL DIMENSIONS

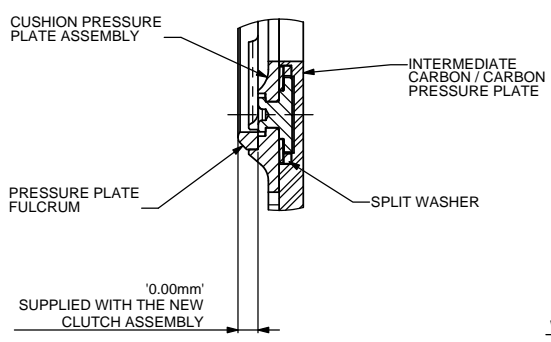


FLAT FLYWHEEL - SUFFIX "FP"

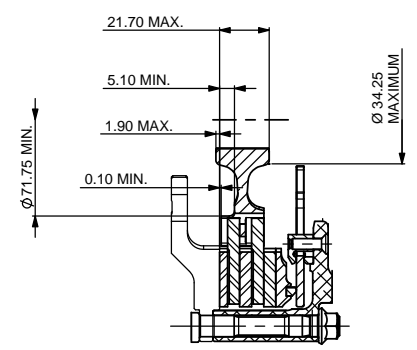


WITH TIME AND USE THE CUSHIONING EFFECT WILL DETERIORATE
 AND COMPONENTS SHOULD BE SERVICED WITH THE ABOVE KIT WHEN EITHER
 THE BELLEVILLE'S BECOME LOOSE OR WHEN DIMENSION 'X' FALLS BELOW 1.00,
 TAKEN AS THE AVERAGE OF 4 EQUALLY SPACED MEASUREMENTS AROUND
 THE CIRCUMFERENCE OF THE BELLEVILLE.

THIS TYPE OF ASSEMBLY IS SUPPLIED COMPLETE FROM AP RACING. SERVICE
 IS LIMITED TO THE FITMENT OF FULCRUM RING SHIMS TO COMPENSATE FOR
 CLUTCH WEAR.



WEAR COMPENSATION IS ACHIEVED BY REPLACING THE PRESSURE PLATE FULCRUM
 AS SHOWN ABOVE. SEE SHEET ONE FOR KIT PART NUMBERS AND INCREMENT DETAILS.



HUB ENVELOPE
 FROM FLYWHEEL FRICTION
 FACE

Issue No.	Alterations			Zone	Initials
	Date & No.	Particulars	#		
1	18/01/11 C4025	FIRST ISSUE	#	JG	
2	22/03/11 C4025	RELEASE LOADS WERE 4900/4300. RELEASE TRAVEL WAS 3.80 RATIO WAS 2.94	#	JG	
3	06/04/11 C4025	NH SPEC AND ALT. Ø38.00 RELEASE FULCRUM SPEC ADDED.	#	JG	
4	22/02/12 C4258	FLAT FLYWHEEL DETAILS ADDED TO SHEET 2	#	JG	
5	08/01/13 C4414	DIAPHRAGM SPRING CHANGED TO THE LATEST FINGER FORM ALUMINIUM COVER WEIGHT AND INERTIAS CHANGED IN LINE. STEEL COVER DETAILS ADDED. MATERIAL OPTION 27 DELETED. 24, 22 AND 13 ADDED.	#	JG	
6	15/03/13	INSTALLATION WIRE DETAILS ADDED TO THE FLAT FLYWHEEL OPTION	#	JG	
7	12/11/13 C4598	S9 CARBON OPTION ADDED	#	JG	
8	10/06/14	'FULCRUM' ADDED TO DATA TABLE	B13	JG	
9	25/11/15 C4940	'WH' SPECIFICATION ADDED	#	JG	
10	18/04/16 C4940	'WH' SPECIFICATION REMOVED	#	JG	

SCALE 1:1 SHEET 2 OF 2

DRAWN: Jeremy Govan

APPROVED:

DERIVED FROM: cp7902 / CP7142

TITLE
 Ø138 CARBON / CARBON
 CLUTCH ASSEMBLY

DRG NO. CP8662CD