

A1 INSTALLATION DRAWING

IF THIS DOCUMENT IS PRINTED IN HARDCOPY, IT IS FOR INFORMATION USE ONLY AND THEREFORE IS NOT SUBJECT TO UPDATING CONTROLS. ALWAYS REFER TO SOLIDWORKS VIEWER FOR LATEST ISSUE



THIS DRAWING IS CONFIDENTIAL AND IS SUPPLIED ON THE EXPRESS CONDITION THAT IT SHALL NOT BE LOANED OR COPIED OR DISCLOSED TO ANY OTHER PERSON OR USED FOR ANY OTHER PURPOSE WITHOUT THE WRITTEN CONSENT OF AP RACING LTD.

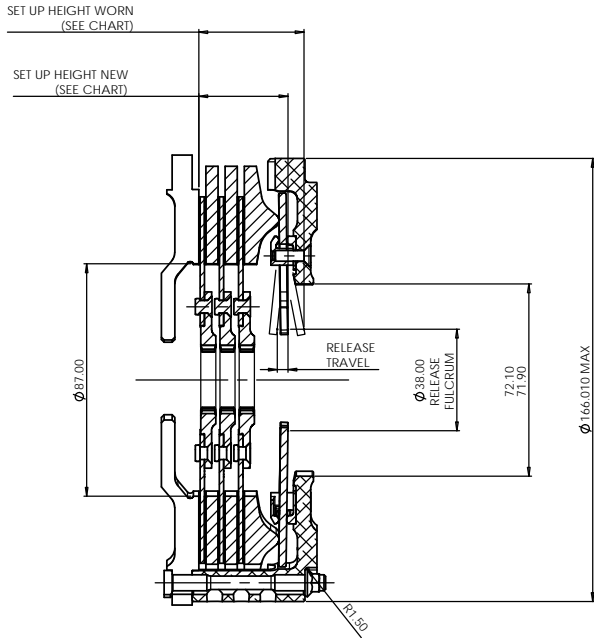
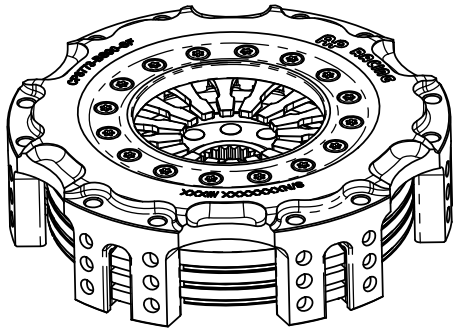


AP Racing
Wheler Road
Coventry
CV3 4LB

Tel: +44 (0) 24 7663 9595
Fax: +44 (0) 24 7663 9559
e-mail: engineering@apracings.com
Web site: <http://www.apracings.com>

© AP Racing Ltd. 2005

CP8773 SINTERED Ø140mm TRIPLE PLATE I-DRIVE CLUTCH ASSEMBLY



DIRECTION OF RELEASE TRAVEL

RELEASE TRAVEL TO BE LIMITED TO 4.00mm MAXIMUM

CP8773 CLUTCH FAMILY

MAXIMUM DYNAMIC TORQUE CAPACITY	
(Nm)	870
(ft.lb)	641
RELEASE LOAD	
Max. Peak Worn (N)	4350
Max. Peak New (N)	3850
WEAR IN (See Note)	
	0.75
Set Up Height New	35.93
	32.37
Set Up Height Worn - MAX	39.50
(Set Up Height is calculated from the flywheel friction face.)	
Release Ratio	4.20
Estimated Assembly Mass including DP's = 3.05 Kg	
Estimated Assembly Inertia including DP's = 0.009877 Kgm ²	
Estimated Driven Plate Inertia = 0.0020 Kgm ²	

PERFORMANCE SUFFIX	BS	OH			
For Reference					
Diaphragm Spring Rate	BUF	ORA			
Clutch Ratio	SHR	HIR			

MATERIAL SUFFIX	DRIVEN PLATE MATERIAL	DRIVEN PLATE THICKNESS
90	SINTERED	2.63mm

FLYWHEEL TYPE	SUFFIX	COMMENTS
FLAT FLYWHEEL	FF	N/A
STEPPED FLYWHEEL	SF	FOR INSTALLATION DATA SEE SHEET 2

Sample AP Racing Part No. **CP8773-XXX-XX**

WEAR IN
THIS CLUTCH HAS BEEN DESIGNED FOR THE WEAR IN INDICATED ABOVE,
DRIVEN PLATE THICKNESS NEW: 2.63mm MIN
DRIVEN PLATE THICKNESS WORN: 2.21mm MIN

DRIVEN PLATES AVAILABLE WITH THE FOLLOWING SPLINE SIZES	
SPLINE	PART No.
1"X23T	CP3683-3FM3
7/8" x 20T	CP3683-4FM3
1 5/32" x 26T	CP3683-12FM3
29.0 x10T	CP3683-13FM3
1 1/8" x10T	CP3683-5FM3

Issue No.	Alterations		Zone	Initials
	Date & No.	Particulars		
1	26/07/12 C2984	FIRST ISSUE	#	JO
2	02/08/12 C2984	'BS' SPEC WAS 'BE'	#	JO
3	26/07/19	PICTORIAL UPDATE TO DRIVEN PLATES	#	BJP
4A	23/10/19 C5401	DIMENSIONS UPDATED FOR TOP END OF COVER. STARTER RING DIAMETER ADDED ON SHEET 2.	#	CGT
5	17/08/21 C5375_01	'MAX PEAK NEW' WAS 'AT TRAVEL' 'MAX PEAK WORN', 'MAX PEAK NEW' AND 'RELEASE RATIO' VALUES CORRECTED TO CONFORM WITH MIS1000 'SHR' WAS 'EHR'	#	K9J JRV F10

SCALE 1:1 SHEET 1 OF 2

DRAWN: Jeremy Govan
APPROVED:
DERIVED FROM:

TITLE
Ø140mm (5.50") TRIPLE PLATE I-DRIVE CLUTCH ASSEMBLY

DRG NO. CP8773CD

A1 INSTALLATION DRAWING

IF THIS DOCUMENT IS PRINTED IN HARDCOPY, IT IS FOR INFORMATION USE ONLY AND THEREFORE IS NOT SUBJECT TO UPDATING CONTROLS. ALWAYS REFER TO SOLIDWORKS VIEWER FOR LATEST ISSUE



THIS DRAWING IS CONFIDENTIAL AND IS SUPPLIED ON THE EXPRESS CONDITION THAT IT SHALL NOT BE LOANED OR COPIED OR DISCLOSED TO ANY OTHER PERSON OR USED FOR ANY OTHER PURPOSE WITHOUT THE WRITTEN CONSENT OF AP RACING LTD.



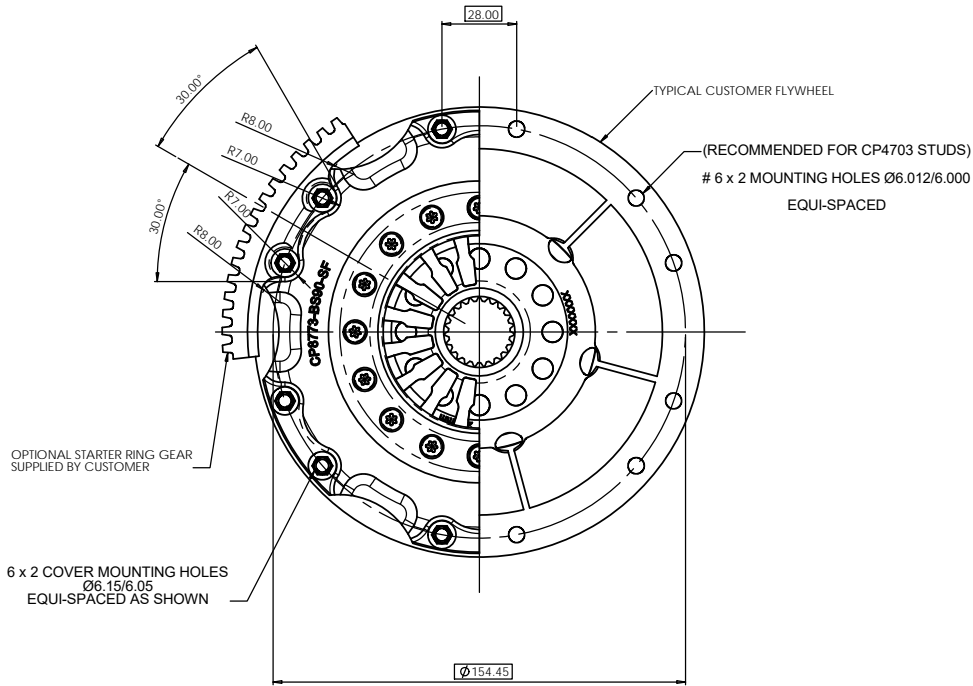
AP Racing
Wheler Road
Coventry
CV3 4LB

Tel: +44 (0) 24 7663 9595
Fax: +44 (0) 24 7663 9556
e-mail: engineering@apracings.co.uk
Web site: <http://www.apracings.com>

© AP Racing Ltd. 2005

FLYWHEEL DIMENSIONS

TYPICAL CUSTOMER FLYWHEEL

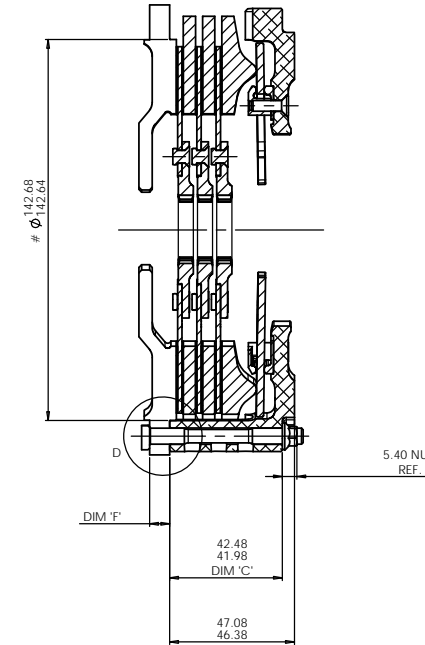


TYPICAL CUSTOMER FLYWHEEL

(RECOMMENDED FOR CP4703 STUDS)
6 x 2 MOUNTING HOLES Ø6.012/6.000
EQUI-SPACED

OPTIONAL STARTER RING GEAR
SUPPLIED BY CUSTOMER

6 x 2 COVER MOUNTING HOLES
Ø6.15/6.05
EQUI-SPACED AS SHOWN



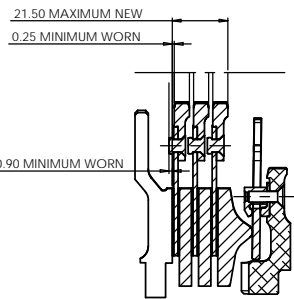
RECOMMENDED CLUTCH MOUNTING :

M6 x 1.0, CP4703 FAMILY STUD AND
K-LOCK NUT
TIGHTENING TORQUE : 10Nm (7.5 ft.lb)

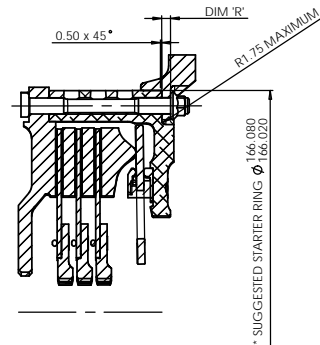
LENGTH OF STUD REQUIRED TO BE
CALCULATED THUS :

STUD LENGTH =
DIMENSIONS 'C' + 'F' + ('R' OPTIONAL) + NUT

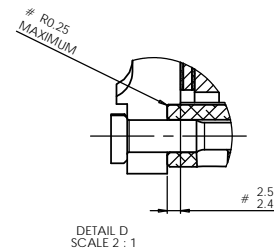
THIS CALCULATED LENGTH TO BE ROUNDED
UP TO THE NEXT AVAILABLE STANDARD STUD
LENGTH.



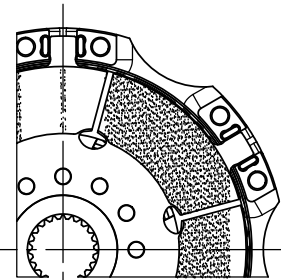
HUB ENVELOPE
(FROM FLYWHEEL FRICTION FACE)



* SUGGESTED STARTER RING Ø 166.080
Ø 166.020



DETAIL D
SCALE 2 : 1



DRIVE CONFIGURATION

Issue No.	Date & No.	Alterations		Zone	Initials
		Particulars			
-	-	SEE SHEET 1 FOR ISSUE INFORMATION.		-	-

SCALE 1:1	SHEET 2 OF 2
DRAWN	Jeremy Govan
APPROVED	
DERIVED FROM	
TITLE	
Ø140mm (5.50") TRIPLE PLATE I-DRIVE CLUTCH ASSEMBLY	
DRG NO.	CP8773CD