

# A2 INSTALLATION DRAWING

If this document is printed in hardcopy, it is for information use only and therefore is not subject to updating controls. Always refer to viewer for latest issue.



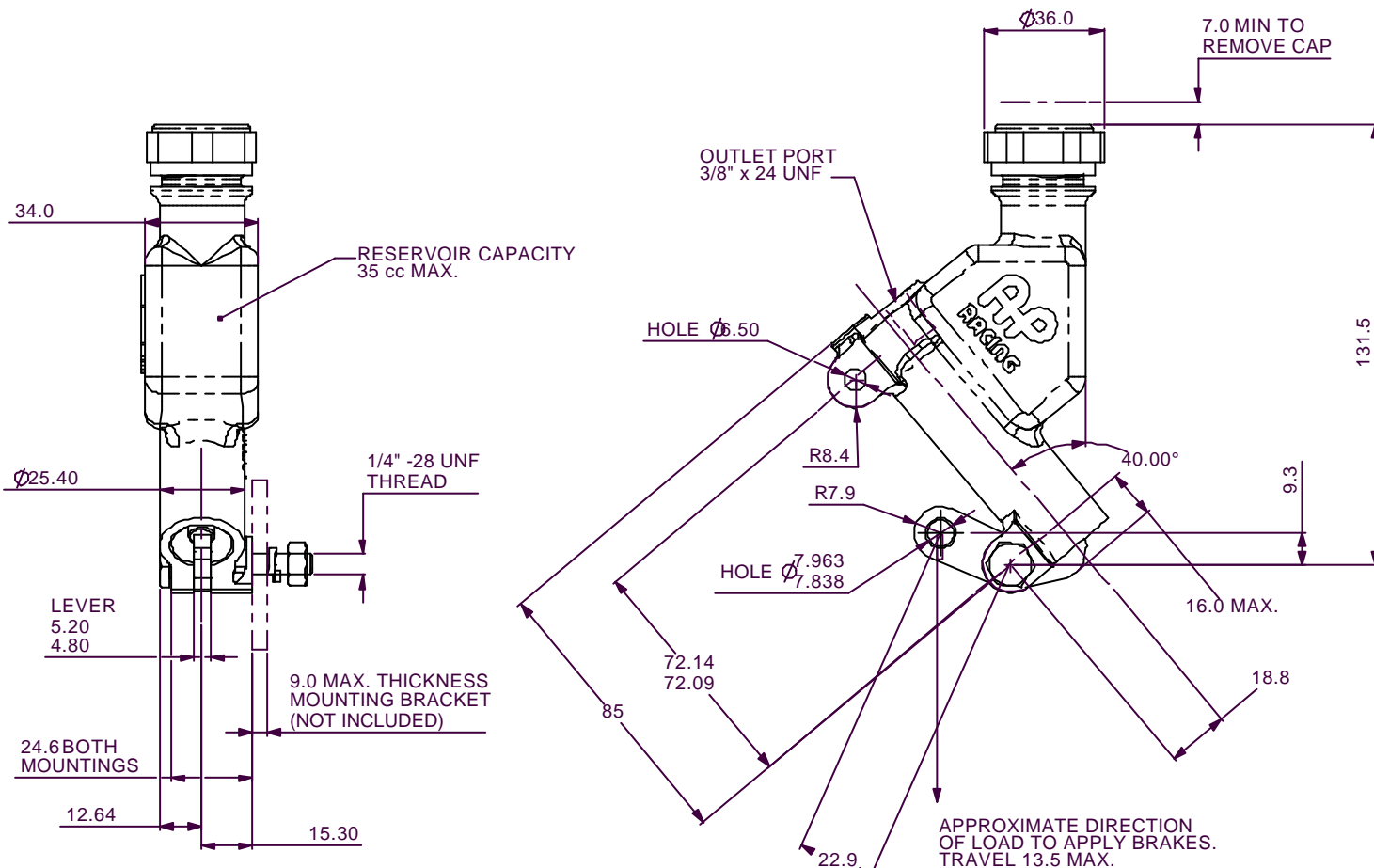
THIS DRAWING IS CONFIDENTIAL AND IS SUPPLIED ON THE EXPRESS CONDITION THAT IT SHALL NOT BE LOANED OR COPIED OR DISCLOSED TO ANY OTHER PERSON OR USED FOR ANY OTHER PURPOSE WITHOUT THE WRITTEN CONSENT OF AP RACING LTD.



© AP Racing Ltd. 2004  
 AP Racing  
 Wheeler Road  
 Coventry  
 CV3 4LB

Tel: +44 024 7663 9595 e-mail: sales@ap racing.co.uk  
 Fax: +44 024 7663 9559 Web site: HTTP://www.ap racing.com

Issue No.	Date & No.	Alterations	
		Particulars	Zone / Initials
1	19/05/04 B3865	FIRST ISSUE	□ DRA
2	01/06/04 B3865	5.20/4.80 WAS 5.08/4.68	C2 □ DRA
3	27/10/04 B3865	UNIVERSAL REPAIR KIT REFERENCED ON DRAWING	□ DRA
4	20/07/05 B3865	SECOND SHEET WITH EXPLODED VIEW AND SPARES LIST ADDED	□ DRA



ASSEMBLY PT No. CP2232-90

NOMINAL PISTON STROKE :- 11.8mm (0.46")  
 NOMINAL BORE SIZE :- 15.87mm (5/8")

ASSEMBLY WEIGHT (DRY) :- 0.30.Kg

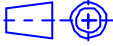
UNIVERSAL REPAIR KIT FOR THIS ASSEMBLY AND FRONT MASTER CYLINDER CP2215-90 IS :- CP5678-1RK

SEE SHEET 2 FOR EXPLODED VIEW AND FULL SPARES LIST

SCALE 1:1	SHEET 1 OF 2
DRAWN	D.ARROWSMITH
APPROVED	□
DERIVED FROM	□
TITLE	
INSTALLATION DRAWING	
REAR BRAKE MASTER CYLINDER	
DRG NO.	CP2232-100CD

# A2 INSTALLATION DRAWING

If this document is printed in hardcopy, it is for information use only and therefore is not subject to updating controls. Always refer to viewer for latest issue.



FIRST ANGLE PROJECTION

THIS DRAWING IS CONFIDENTIAL AND IS SUPPLIED ON THE EXPRESS CONDITION THAT IT SHALL NOT BE LOANED OR COPIED OR DISCLOSED TO ANY OTHER PERSON OR USED FOR ANY OTHER PURPOSE WITHOUT THE WRITTEN CONSENT OF AP RACING LTD.

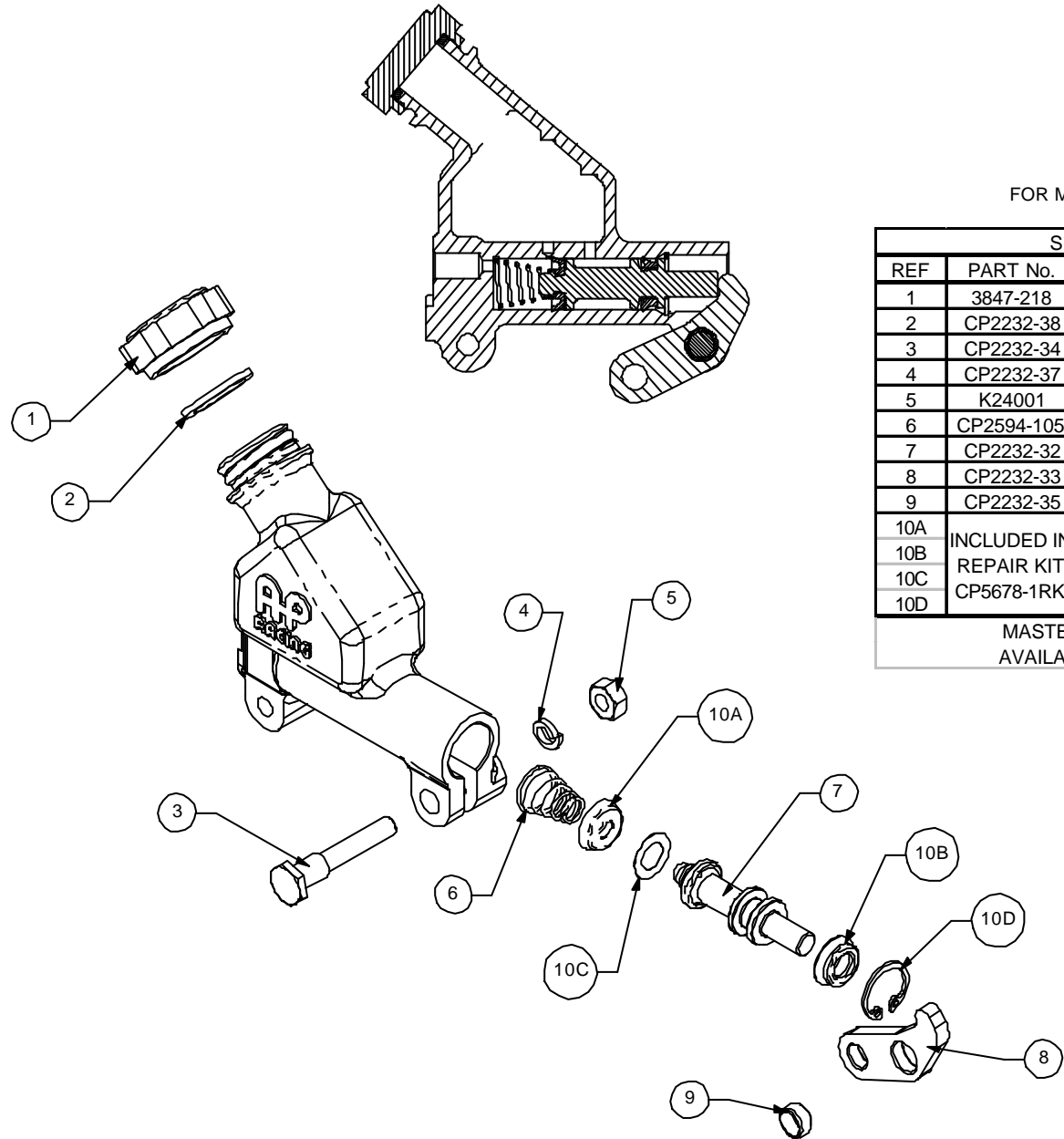


© AP Racing Ltd. 2004

AP Racing  
Wheler Road  
Coventry  
CV3 4LB

Tel: +44 024 7663 9595 e-mail: sales@apracng.co.uk  
Fax: +44 024 7663 9559 Web site: HTTP://www.apracng.com

Issue No.		Alterations		Zone	Initials
Date & No.	Particulars				



## SPARES

FOR MASTER CYLINDER CP2232-90

SPARE PARTS OR KITS			
REF	PART No.	DESCRIPTION	QTY
1	3847-218	CAP	1
2	CP2232-38	SEALING WASHER	1
3	CP2232-34	SHOULDERED BOLT	1
4	CP2232-37	SPRING WASHER	1
5	K24001	1/4" UNF NUT	1
6	CP2594-105	RETURN SPRING	1
7	CP2232-32	PISTON	1
8	CP2232-33	LEVER	1
9	CP2232-35	BUSH	1
10A	INCLUDED IN REPAIR KIT	PRIMARY SEAL	1
10B		SECONDARY SEAL	1
10C	CP5678-1RK	PISTON WASHER	1
10D		CIRCLIP	1

MASTER CYLINDER BODY IS NOT AVAILABLE AS A SEPARATE ITEM

SCALE 1:1	SHEET 2 OF 2
DRAWN	D.ARROWSMITH
APPROVED	
DERIVED FROM	
TITLE	
INSTALLATION DRAWING	
REAR BRAKE MASTER CYLINDER	
DRG NO.	CP2232-100CD