

A1 INSTALLATION DRAWING

IF THIS DOCUMENT IS PRINTED IN HARDCOPY, IT IS FOR INFORMATION USE ONLY AND THEREFORE IS NOT SUBJECT TO UPDATING CONTROLS. ALWAYS REFER TO SOLIDWORKS VIEWER FOR LATEST ISSUE



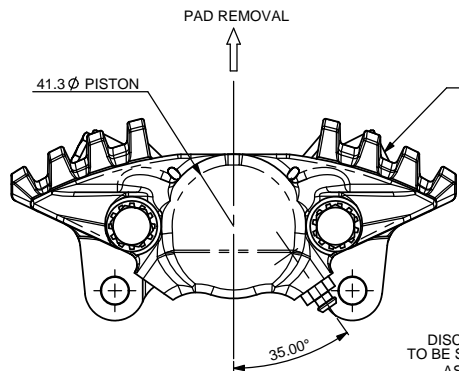
THIS DRAWING IS CONFIDENTIAL AND IS SUPPLIED ON THE EXPRESS CONDITION THAT IT SHALL NOT BE LOANED OR COPIED OR DISCLOSED TO ANY OTHER PERSON OR USED FOR ANY OTHER PURPOSE WITHOUT THE WRITTEN CONSENT OF AP RACING LTD.



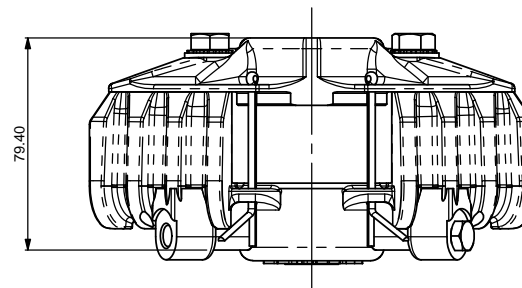
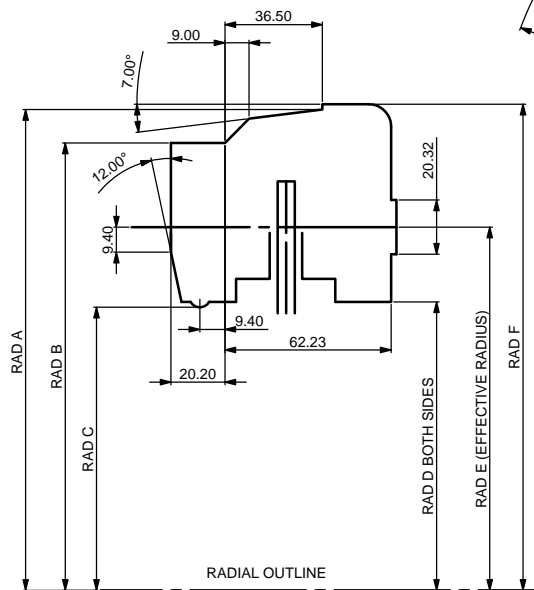
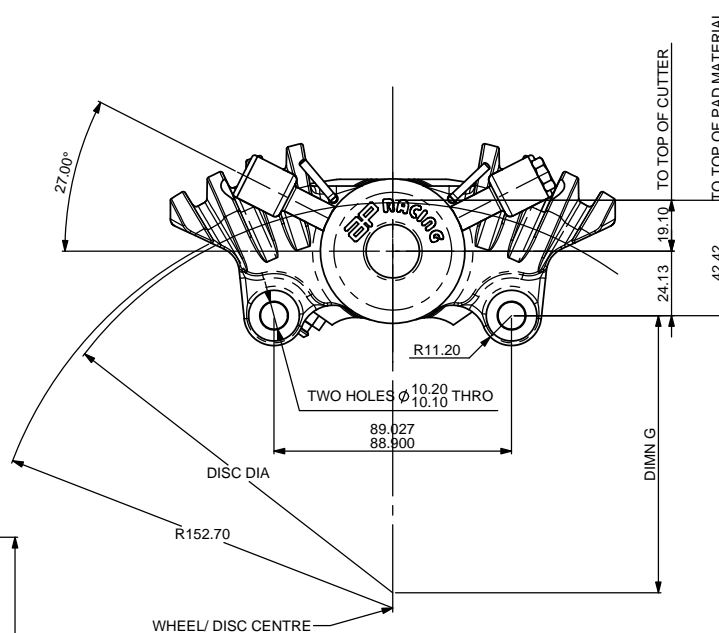
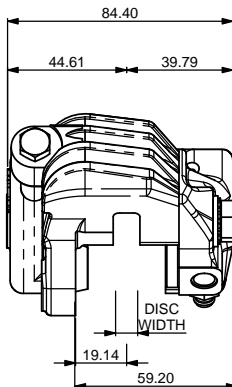
AP Racing
Wheler Road
Coventry
CV3 4LB

Tel: +44 (0) 24 7663 9595
Fax: +44 (0) 24 7663 9559
e-mail: engineering@apracings.co.uk
Web site: http://www.apracings.com

© AP Racing Ltd. 2005



DISC AND CALIPER MOUNTING TO BE SUCH THAT DISC IS CENTRAL AS SHOWN TO WITHIN '0.5



CP2195D38-APH420
THICKNESS : 10.5mm
AREA: 10.5cm²
DEPTH: 38.4mm

DIAMETER	A	B	C	D	E	F	G
300.4	180.0	165.7	103.8	105.8	133.8	179.8	107.98 107.85
298.45	177.0	164.5	103.0	105.0	133.0	179.0	109.22 109.09
292.10	174.0	161.5	100.0	102.0	130.0	176.0	105.64 105.54
279.40	168.5	156.0	94.5	96.5	124.5	169.5	99.57 99.44
266.70	162.0	149.5	98.0	90.0	118.0	163.0	92.71 92.56
254.0	154.0	141.5	80.0	82.0	110.0	155.0	85.60 85.47

CALIPER STROKE NUMBERS

CALIPER PART NUMBER SUFFIX SELECTION

- 1ST CHARACTER 'E' OR 'S' DENOTES POSITION OF INLET ADAPTOR
'E' END FEED
'S' SIDE FEED
- 2ND CHARACTER '0' DENOTES TYPE OF ANTI KNOCK BACK SPRING USED
'0' NO KNOCK BACK SPRING
- 3RD CHARACTER 'L' DENOTES STEEL PISTONS

R.H AS DRAWN L.H OPPOSITE

CALIPER IS HANDED BY BLEED AND FEED
R.H. FRONT OF DISC BUT CAN BE MOUNTED BEHIND DISC ON LEFT HAND SIDE ALSO

GENERAL DESCRIPTION
CP2696-38E0
2 PISTON 2 PAD CALIPER TO SUIT 300.04mm DIA. x 6.4mm DISC MAX

APPLICATIONS
SOLO MACHINES
CLASSIC MACHINES
F2 SIDECAR

TECHNICAL INFORMATION
TOTAL PISTON AREA: 26.8cm²
PISTON MATERIAL: ALUMINIUM ALLOY
BODY MATERIAL: ALUMINIUM ALLOY
ASSEMBLY WEIGHT WITHOUT PADS: 900g

INSTALLATION INFORMATION
DISC & CALIPER MOUNTING TOLERANCES TO BE SUCH THAT THE DISC IS CENTRAL TO THE CALIPER TO WITHIN ' 0.5mm
DISC DIAMETRAL CLEARANCE SHOULD BE 2.5mm NOM. FROM DISC O.D. TO PATHWAY
BLEED SCREW MAX TIGHTENING TORQUE 17Nm

REPLACEMENT SEAL KIT
SEAL KIT CP4518-K

PADS TO BE CHANGED WHEN PAD MATERIAL HAS BEEN WORN DOWN TO 1.25 PROUD OF BACK PLATE

Issue No.	Alterations		Zone	Initials
	Date & No.	Particulars		
12	08/08/13 B6851	REDRAW ON SOLIDWORKS	#	JN

SCALE 1:1	SHEET 1 OF 1
DRAWN	JAMES NURSE
APPROVED	
DERIVED FROM	
TITLE	
ALUMINIUM MOTOR CYCLE CALIPER	
DRG NO.	CP2696-1