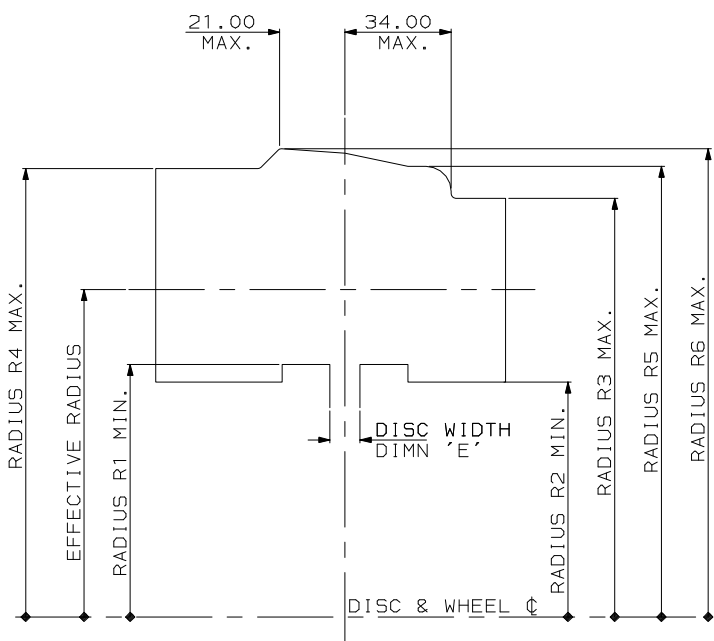
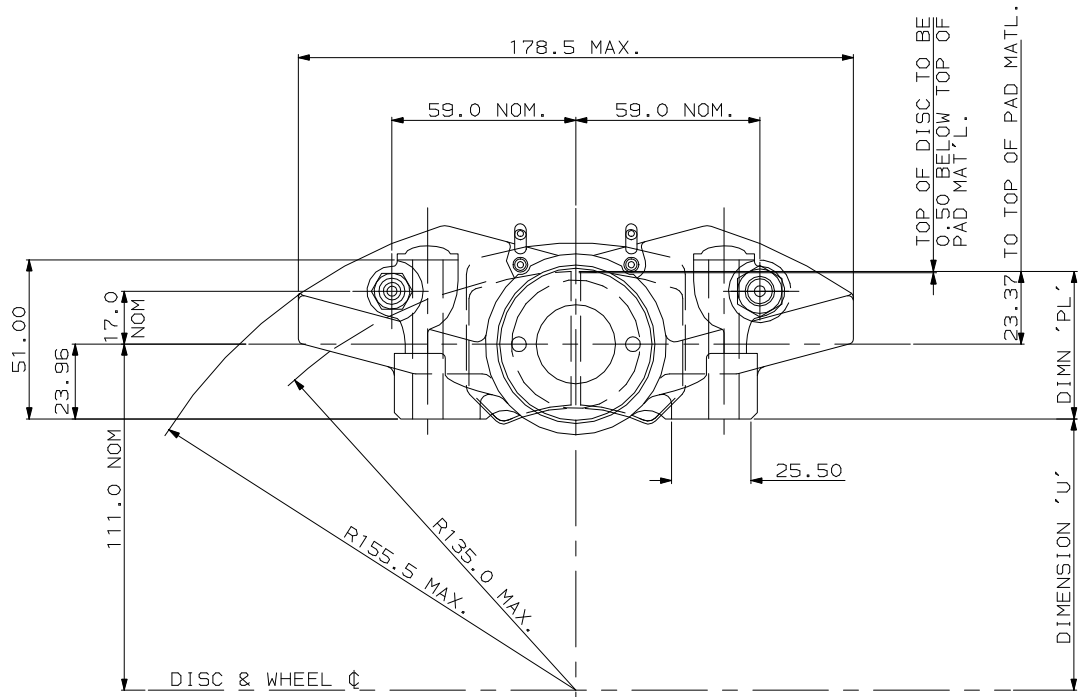
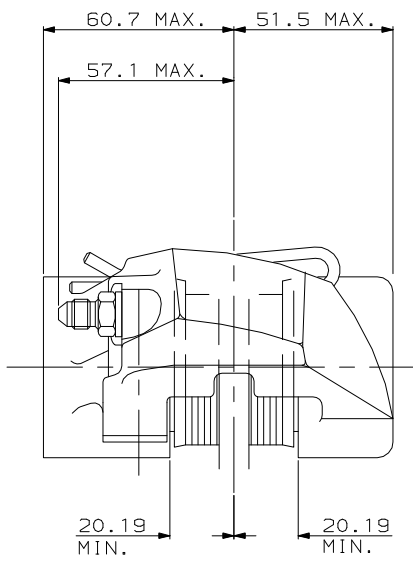
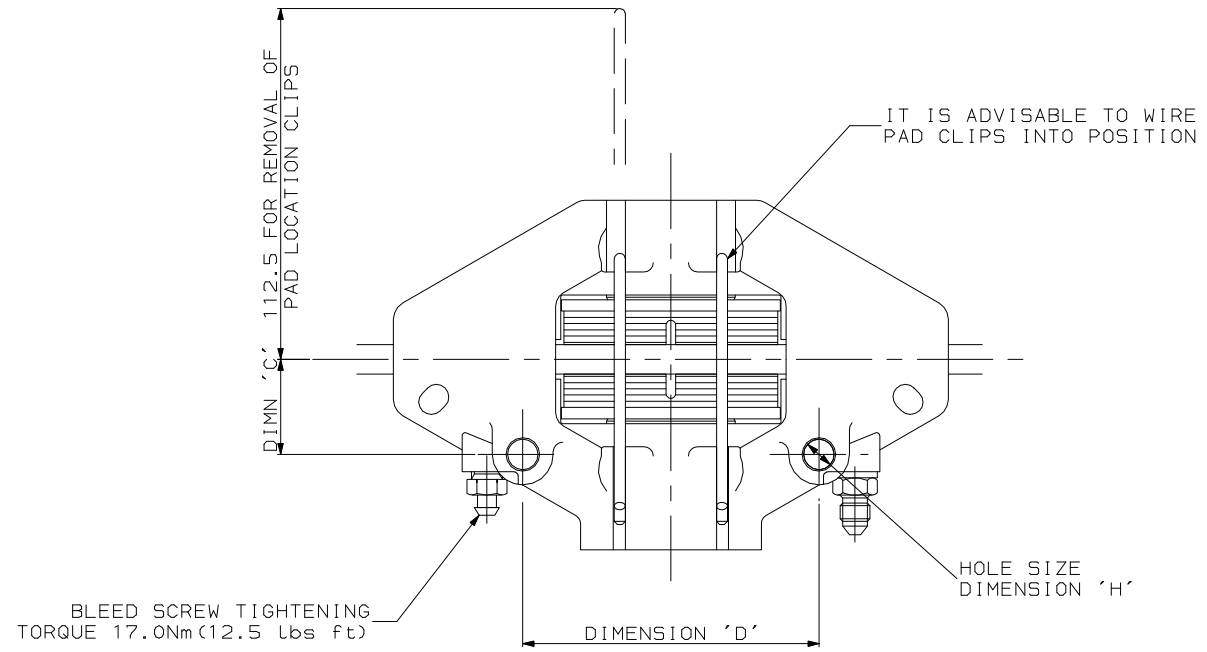


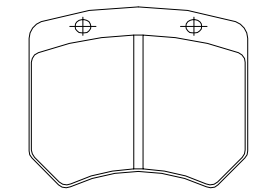
ISSUE NO.	DATE & NO.	ALTERATIONS		CHK'D
		NOTE	VALUE	
1	21/6/90	FIRST ISSUE		
		ISSUE CHANGES SEE SHT 2		



RADIAL PROFILE OF CALIPER & DISC.



DISC & CALIPER MOUNTING TOLERANCES TO BE SUCH THAT DISC IS CENTRAL TO CALIPER WITHIN ±0.5



CP2399 PAD FAMILY SEE PAD CHART

TEST		UNLESS OTHERWISE STATED:	
DIMENSIONAL TOLERANCES	#		
ANGULAR TOLERANCES	#		
MAX SURFACE FINISH:			
BY ANY METHOD	✓ = #	µm (Ra)	
ON MACHINED SURFACES	✓ = #	µm (Ra)	
WITHOUT MATERIAL REMOVAL	✓ = #	µm (Ra)	
DIMENSIONS IN MILLIMETERS	SHEET 27	TITLE	
DRAWING TO B.S.308.	SIZE 40	P.V.2/26 CALIPER INSTALLATION	
THREADS TO B.S.3643 PT2(MEL110).	SCALE 1:1	PART NO.	
REMOVE BURRS.	TRANSLATION SHEET NO(S)	CP3676-1	
TITLE	SHEET NO. TOTAL	GROUP PART NO.	
	1 OF 2	#	

GENERAL DESCRIPTION.

THIS CALIPER IS DESIGNED TO OPERATE ON A SOLID OR VENTILATED DISC FROM Ø254.0(10") TO Ø266.7(10.5") IN A Ø330.2(13") WHEEL.

TYPICAL APPLICATIONS-

F3, CLUBMANS F1300, SMALL G.T.'S, MIDGETS, RALLY

TECHNICAL & INSTALLATION INFORMATION

PISTON DIAMETER 2X41.28 (1.625")
 PISTON MATERIAL ALUMINIUM ALLOY(STANDARD)
 BODY MATERIAL ALUMINIUM ALLOY
 HYDRAULIC THREADS 3/8" X 24UNF
 WEIGHT LESS PADS - 1.1 Kg

CALIPER IS HANDED BY SWITCHING POSITIONS OF BLEED SCREW & INLET CONNECTION
 CALIPER TO BE MOUNTED ON THE HORIZONTAL WITH BLEED SCREW UPPERMOST

KEY TO DIMENSIONS

CALIPER BODIES ARE PRODUCED SUCH THAT FIXING HOLES CAN BE MACHINED TO ANY SPECIFIC REQUIREMENT WITHIN THE FOLLOWING LIMITS-

- DIMENSION 'PL' TOP OF PAD MATERIAL TO FIXING HOLE BOSS FACE WITH PAD SITTING DOWN ON LEDGE- 47.33 (1.86")
- DIMENSION 'C' OFFSET-DISC CENTRE LINE TO MOUNTING HOLE CENTRE LINE. FOR DISCS OF THICKNESS 9.53 (0.385") - 30.5 (1.20") ONLY
- DIMENSION 'D' FIXING HOLE CENTRES - 95.0 (3.74")
- DIMENSION 'H' FIXING HOLE DIAMETER - 9.71/10.1 (0.382"/0.398")
- DIMENSION 'U' WHEEL CENTRE TO CALIPER MOUNTING BOSS FACE (DISC DIAMETER/2) + 0.5 - 'PL' DIMENSION

THE PRODUCTION OF CALIPERS WITH SPECIAL 'NON-STANDARD' FIXING DIMENSIONS SHOULD BE ARRANGED WITH AP RACING.

SIMILAR CALIPERS ARE AVAILABLE WITH LUG MOUNTINGS UNDER THE PART NUMBER CP2576

AP RACING TECHNICAL SECTION WILL BE PLEASED TO ADVISE ON THE MOST SUITABLE EQUIPMENT FOR ANY PARTICULAR APPLICATION.

SHOULD PISTONS BE INADVERTANTLY REMOVED, THEY SHOULD BE WIPED CLEAN AND SMEARED WITH AP LOCKHEED SILICONE DISC BRAKE LUBRICANT PART No KL71451 BEFORE REPLACEMENT.

PART NUMBER ORDERING SYSTEM

- SELECT ASSEMBLY FROM TABLE.
- SELECT SUFFIX CHARACTERS AS FOLLOWS-
 1st CHARACTER - 'S' OR 'E' DENOTES POSITION OF INLET ADAPTOR 'S' FOR SIDE FEED (STANDARD) 'E' FOR END FEED.
 2nd CHARACTER - '0', '4' OR '7' DENOTES THE LOAD OF ANTI KNOCK BACK SPRINGS FITTED
 '0' NO SPRINGS, '4' 4lb (17.8N) SPRINGS, '7' 7lb (31N) SPRINGS FITTED LOAD
- PAD MATERIAL-WHEN ORDERING CALIPER ASSEMBLIES QUOTE WHICH PAD MATERIAL IS REQUIRED
 PAD MATERIAL AVAILABLE - DS11, F2430, M171 & M121

EXAMPLE PART NUMBER - CP3676-3E4 PAD DS11

PAD CHART

PAD PART NO.	MATERIAL	THICKNESS	AREA (cm ²)	VOLUME (cm ³)
CP2399-5	M171	14.2 14.5	29.70	42.62
CP2399-8	M121	14.2 14.5	29.70	42.62
CP2399-15	DS11	14.2 14.5	29.70	42.62
CP2399-17	M171	13.0 13.2	29.70	38.91
CP2399-18	F2430	14.2 14.5	29.70	42.62
CP2399-19	F2447	14.2 14.5	29.70	42.62

CALIPER ASSEMBLY FAMILY NO.	STROKE NO.				DISC DIAMETER	DISC WIDTH DIMN 'E'	DIMN 'PL'	DIMN 'C'	DIMN 'D'	DIMN 'H'	REMARKS/APPLICATIONS
	1	2	3	4							
CP3676-3	N/A	N/A	N/A	N/A	SEE BELOW	SEE BELOW	47.33	30.5	95.0	9.78 9.65	
CP3676-4	N/A	N/A	N/A	N/A	SEE BELOW	SEE BELOW	47.33	30.5	95.0	10.15 10.05	

RADIAL PROFILE CHART

DISC DIAMETER	DISC WIDTH	EFFECTIVE RADIUS	RAD 1	RAD 2	RAD 3	RAD 4	RAD 5	RAD 6
254.0	9.53	104.8	81.0	75.3	134.3	143.8	144.5	150.2
263.7	9.53	109.0	85.3	79.5	138.5	148.0	149.0	153.9
266.7	9.53	111.0	87.0	81.5	140.5	149.5	150.5	155.5

TEST

UNLESS OTHERWISE STATED:
 DIMENSIONAL TOLERANCES #
 ANGULAR TOLERANCES #
 MAX SURFACE FINISH: BY ANY METHOD ✓ = # μm (Ra)
 ON MACHINED SURFACES ✓ = # μm (Ra)
 WITHOUT MATERIAL REMOVAL ✓ = # μm (Ra)

DIMENSIONS IN MILLIMETERS. DRAWING TO B.S. 308. THREADS TO B.S. 3643 PT2 (MEL110). REMOVE BURRS.

TITLE

SHEET SIZE A1
 SCALE 1:1
 TRANSLATION SHEET NO(S)
 SHEET NO. TOTAL 2 OF 2

ISSUE NO.	ALTERATIONS		DATE & NO.	PARTICULARS	O.K.
	DATE & NO.	PARTICULARS			
1	21/6/90	FIRST ISSUE			
2	21/1/94	CP3676-4 ADDED			
3	27/9/95 RAC5462	REDRAWN ON CAD			CB
4	5/9/96 RAC6028	DIM 51.00 ADDED K8 DIM 23.96 ADDED K9 DIM 25.50K ADDED K13.			SP
5	07/07/98	BLEED SCREW TORQUE WAS 5.5Nm, NOW 17.0Nm			RB

MATERIAL #

MATERIAL SPECIFICATION(S) #

TREATMENT #

DRAWN C. BOWDERY 27/9/95 CHECKED #

RE-DRAWN CHECKED #

FINAL APPROVAL

TITLE P.V.2/26 CALIPER INSTALLATION

PART NO. CP3676-1

GROUP PART NO. #