

# A1 INSTALLATION DRAWING

IF THIS DOCUMENT IS PRINTED IN HARDCOPY, IT IS FOR INFORMATION USE ONLY AND THEREFORE IS NOT SUBJECT TO UPDATING CONTROLS. ALWAYS REFER TO SOLIDWORKS VIEWER FOR LATEST ISSUE



THIS DRAWING IS CONFIDENTIAL AND IS SUPPLIED ON THE EXPRESS CONDITION THAT IT SHALL NOT BE LOANED OR COPIED OR DISCLOSED TO ANY OTHER PERSON OR USED FOR ANY OTHER PURPOSE WITHOUT THE WRITTEN CONSENT OF AP RACING LTD.



AP Racing  
Wheler Road  
Coventry  
CV3 4LB

Tel: +44 (0) 24 7663 9595  
Fax: +44 (0) 24 7663 9559  
e-mail: [engineering@apracings.co.uk](mailto:engineering@apracings.co.uk)  
Web site: <http://www.apracings.com>

© AP Racing Ltd. 2005

NOTE:  
R.H. AS DRAWN  
L.H. OPPOSITE

SUFFIX TO DISC PART NUMBERS

P - PLAIN NO HOLES OR GROOVES

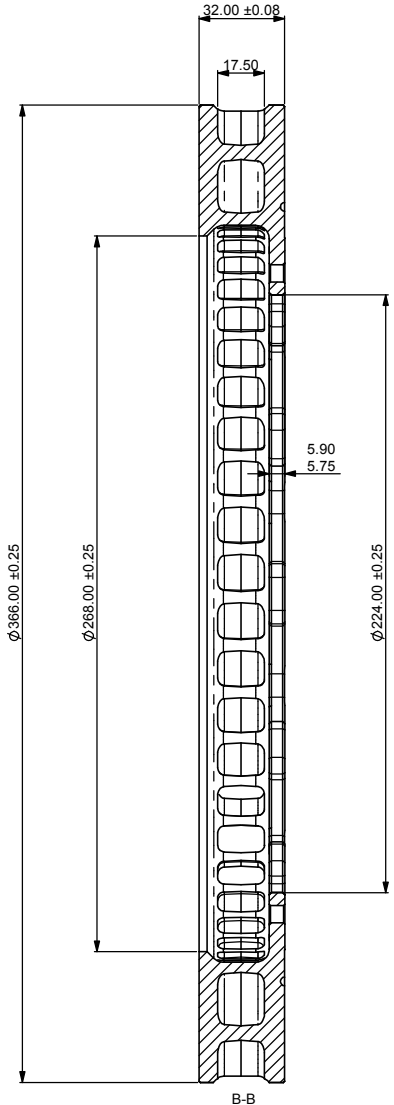
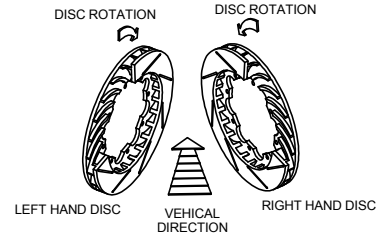
Gnn - STRAIGHT GROOVES - FIGURE nn DENOTES NUMBER OF GROOVES PER FACE.  
e.g CG8 - 8 GROOVES PER FACE

THIS IS A 48 VANE DISC  
APPROX DISC WEIGHT = 6.50KG

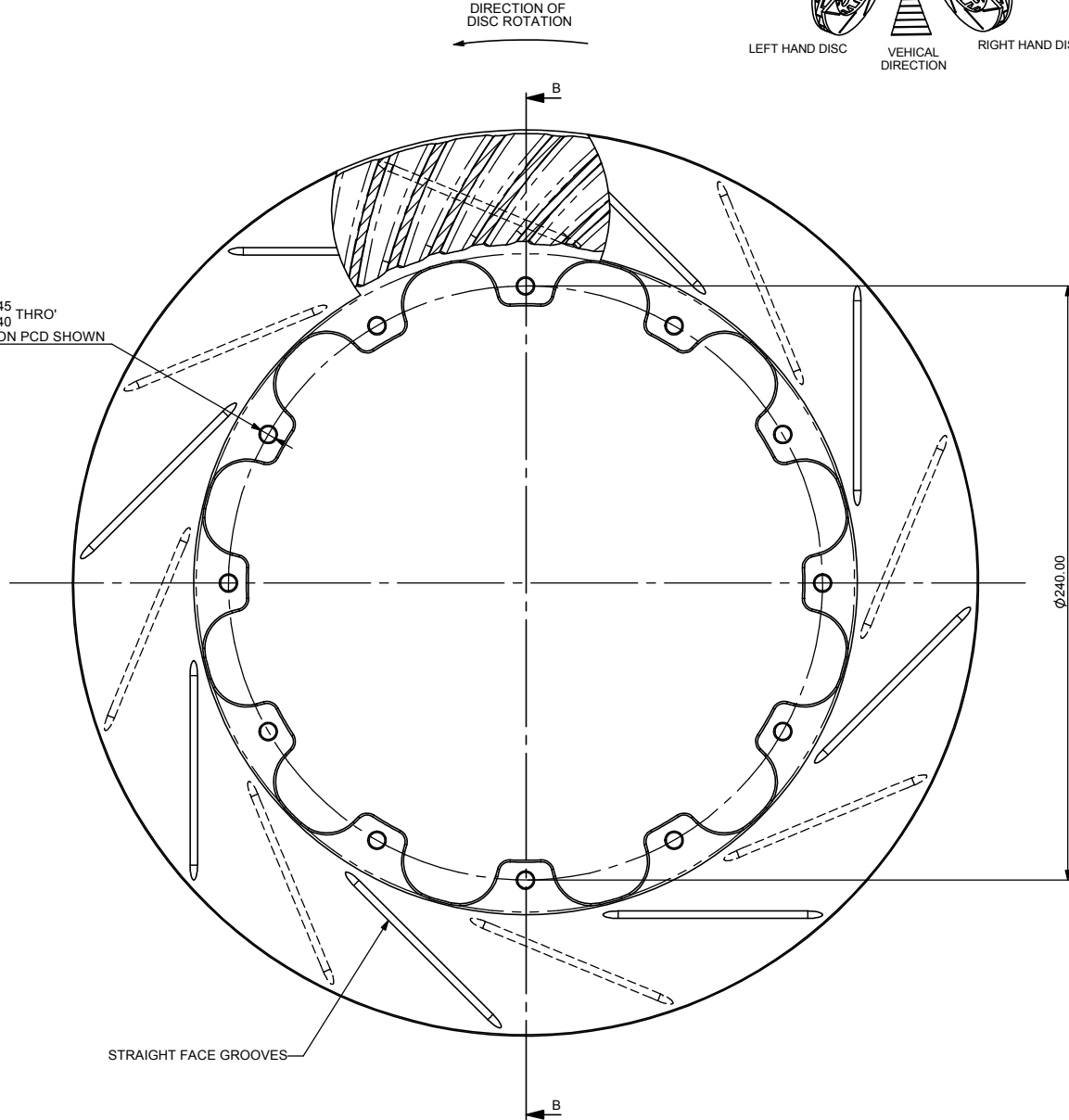
THIS DISC HAS BEEN DESIGNED TO WORK WITH A PAD SWEEPED DEPTH OF D48

FOR DISC MOUNTING TECHNIQUES, BEDDING PROCEDURE AND DISC COOLING RECOMMENDATIONS SEE A P RACING BRAKE CALIPER CATALOGUE

### DISC INSTALLATION



12 HOLES  $\phi 6.45$  THRO'  
 $\phi 6.40$   
EQUISPACED ON PCD SHOWN



STRAIGHT FACE GROOVES

Issue No.	Alterations		Zone	Initials
	Date & No.	Particulars		
1	13/11/06 B4683	FIRST ISSUE		JH

SCALE 1:1		SHEET 1 OF 1	
DRAWN	jheritage		
APPROVED			
DERIVED FROM			
TITLE			
Ø362x32 VENTED DISC			
DRG NO.	CP3718-1088-9		