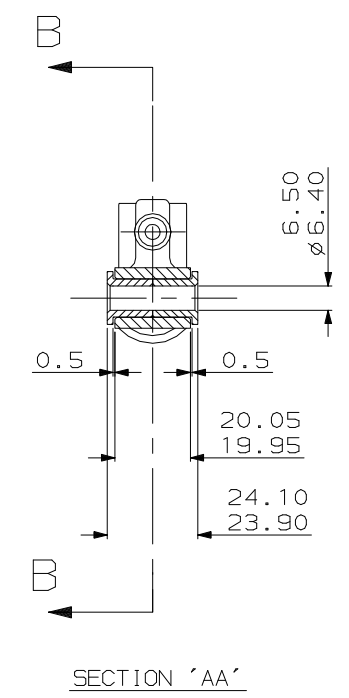
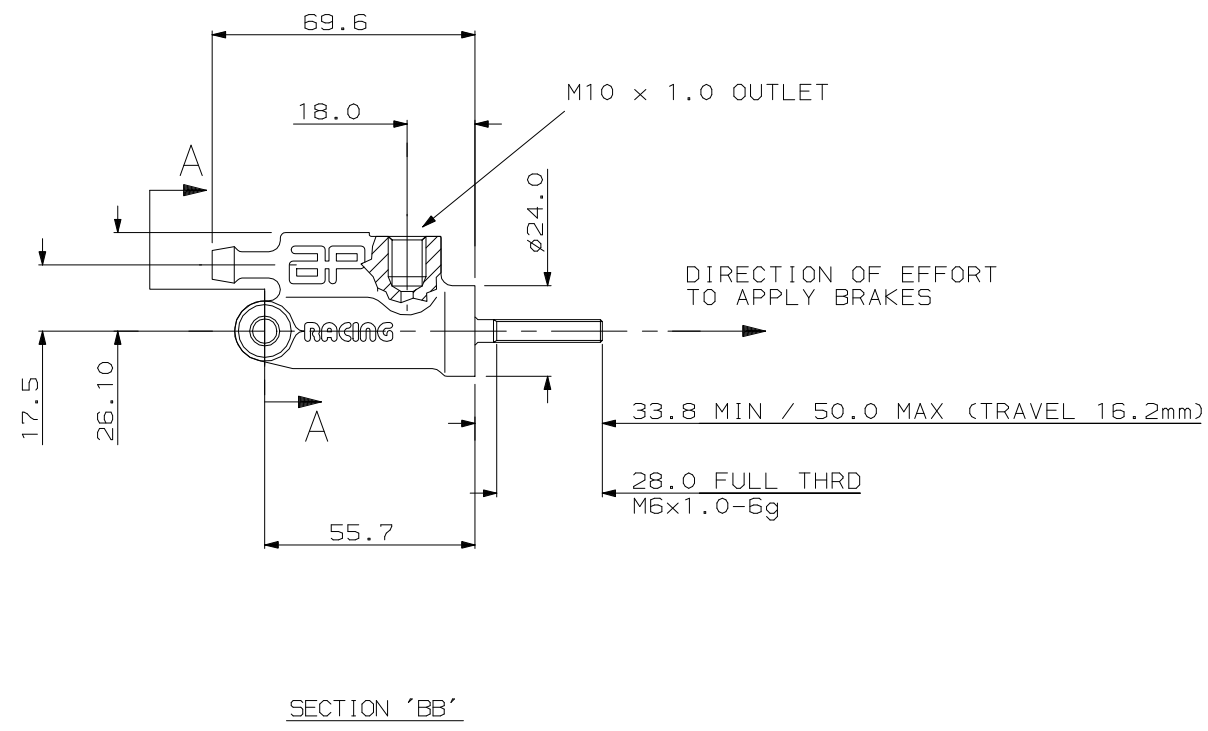


NOTE	VALUE	ALTERATIONS		CHKD
		ISSUE NO.	DATE & NO.	

1	05/04/95 P-Y GENON	FIRST ISSUE	
2	13/10/95 RAC05450	PULLROD LENGTH 33.8/50 WAS 45.8/62 MTG WIDTH 24.10/23.90 WAS 27.5	PYG



CP3756-4

GENERAL DESCRIPTION :
PULL-TYPE REMOTE MASTER CYLINDER
 WEIGHT 100g (3.5oz)
 EFFECTIVE BORE SIZE 14mm (0.551")
 REAL BORE SIZE 15.875mm (0.625")
 STROKE 16.2mm (0.638")
 HYDRAULIC CONNECTIONS .. PUSH-ON INLET : ACCEPTS 7.9mm (5/16") INSIDE DIA. HOSE
 M10x1.0 OUTLET THREAD
 TYPICAL APPLICATION REAR BRAKE MASTER CYLINDER FOR MOTORCYCLES

ORDERING :
 THE PART NUMBER FOR ORDERING IS CP3756-4.

TEST			
UNLESS OTHERWISE STATED:			
DIMENSIONAL TOLERANCES	#		
ANGULAR TOLERANCES	#		
MAX SURFACE FINISH:	BY ANY METHOD	✓ = #	$\mu\text{m (Ra)}$
	ON MACHINED SURFACES	✓ = #	$\mu\text{m (Ra)}$
	WITHOUT MATERIAL REMOVAL	✓ = #	$\mu\text{m (Ra)}$
DIMENSIONS			
IN MILLIMETERS.			
DRAWING TO B.S.308.			
THREADS TO B.S.3643 PT2 (MEL110).			
REMOVE BURRS.			
TITLE	SHEET SIZE	A1	
	SCALE	1 : 1	
	TRANSLATION SHEET NO(S)		
SHEET NO.	TOTAL	1 OF 1	
FINAL APPROVAL			
TITLE		14mm PULL-TYPE MOTORCYCLE REAR M/CYL INSTALLATION	
PART NO.		cp3756-1	
GROUP PART NO.		#	