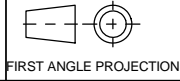


A2 INSTALLATION DRAWING

If this document is printed in hardcopy, it is for information use only and therefore is not subject to updating controls. Always refer to viewer for latest issue.



THIS DRAWING IS CONFIDENTIAL AND IS SUPPLIED ON THE EXPRESS CONDITION THAT IT SHALL NOT BE LOANED OR COPIED OR DISCLOSED TO ANY OTHER PERSON OR USED FOR ANY OTHER PURPOSE WITHOUT THE WRITTEN CONSENT OF AP RACING LTD.



AP Racing
Wheler Road
Coventry
CV3 4LB

Tel: +44 024 7663 9595
Fax: +44 024 7663 9599
e-mail: sales@apracings.co.uk
Web site: http://www.apracings.com

PART NUMBERING:

"CP3985" DENOTES STANDARD AIRJACK FAMILY or "CP3945" DENOTES HEAVY DUTY AIRJACK FAMILY
"-XXX" DENOTES THE STROKE OF THE AIRJACK
"EV" DENOTES OPTIONAL EXHAUST VALVE

MAINTENANCE

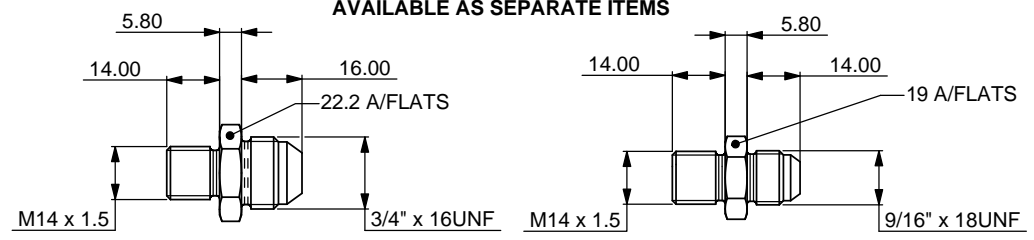
DO NOT USE PETROL OR PARAFFIN FOR CLEANING THE AIR JACK AS THIS WILL DAMAGE THE RUBBER SEALS. USE AN ALCOHOL BASED CLEANING FLUID i.e. METHYLATED SPIRIT. FOR INTERNAL LUBRICATION USE ONLY SILICONE SPRAY OR SILICONE GREASE AS REQUIRED.

LOADS

MAXIMUM LIFT CAPABILITY - 675 Kg
MAXIMUM OPERATING PRESSURE - 30.0 BAR

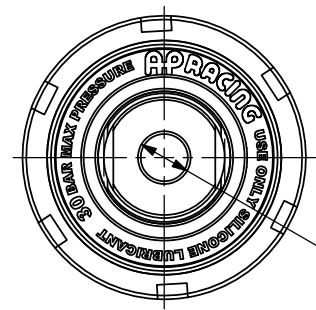
| | ASSEMBLY PART No. | STROKE | DIMN 'A' | DIMN 'B' | DIMN 'C' | MASS |
|------------|-------------------|--------|----------|-----------------|----------|---------|
| STD | CP3985-150 | 150 mm | 224 mm | 80 mm | 80 mm | 0.83 Kg |
| | CP3985-150EV | 150 mm | 224 mm | 80 mm | 80 mm | 0.88kg |
| | CP3985-230 | 230 mm | 325 mm | 80 mm | 80 mm | 1.07 Kg |
| | CP3985-230EV | 230 mm | 325 mm | 80 mm | 80 mm | 1.12 kg |
| | CP3985-310 | 310 mm | 425 mm | 80 mm | 80 mm | 1.34 Kg |
| | CP3985-310EV | 310 mm | 425 mm | 80 mm | 80 mm | 1.39 Kg |
| HEAVY DUTY | CP3945-230 | 230 mm | 325 mm | 80 mm | 80 mm | 1.28 Kg |
| | CP3945-230EV | 230 mm | 325 mm | 80 mm | 80 mm | 1.33 kg |
| | CP3945-310 | 310 mm | 425 mm | 80 mm | 80 mm | 1.60 Kg |
| | CP3945-310EV | 310 mm | 425 mm | 80 mm <td 80 mm | 1.65 Kg | |

INLET ADAPTORS AND COPPER GASKETS AVAILABLE AS SEPARATE ITEMS

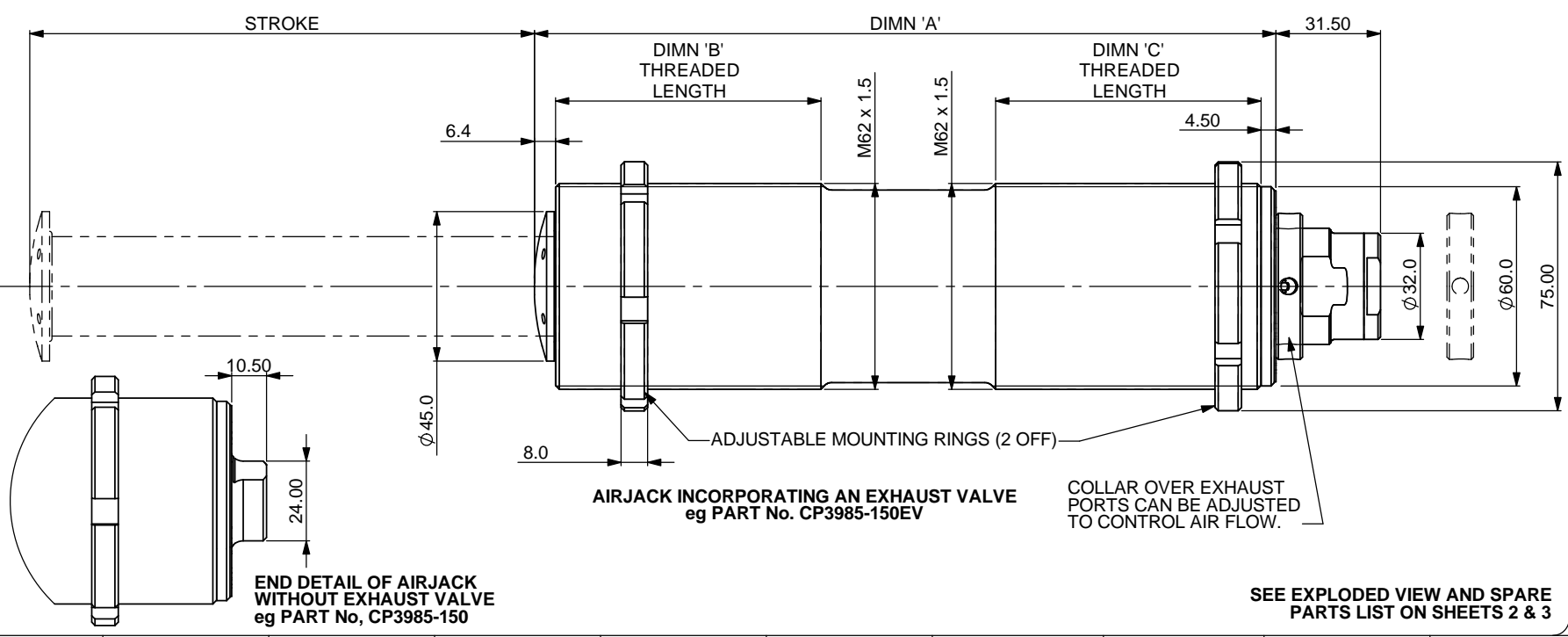


ADAPTOR :- CP3985-145
M14 TO JIC 8 (3/4" UNF)
MATERIAL : ALUMINIUM
COPPER GASKET :- KL44523

ADAPTOR :- CP3985-144
M14 TO JIC 6 (9/16" UNF)
MATERIAL : ALUMINIUM
COPPER GASKET :- KL44523



INLET PORT
M14 x 1.5
INTERNAL THREAD
AS SUPPLIED



END DETAIL OF AIRJACK WITHOUT EXHAUST VALVE eg PART No, CP3985-150

AIRJACK INCORPORATING AN EXHAUST VALVE eg PART No. CP3985-150EV

COLLAR OVER EXHAUST PORTS CAN BE ADJUSTED TO CONTROL AIR FLOW.

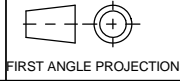
SEE EXPLODED VIEW AND SPARE PARTS LIST ON SHEETS 2 & 3

| Issue No. | Alterations | | Zone | Initials |
|-----------|------------------|--|------|----------|
| | Date & No. | Particulars | | |
| 1 | 25/06/03 B3614 | CURRENT ISSUE | # | DRA |
| 2 | 10/11/03 | -190EV ASSEMBLY ADDED | # | DRA |
| 3 | 25/11/03 | -110EV ASSEMBLY ADDED DIMN 'C' ADDED | # | DRA |
| 4 | 18/02/04 B3881 | -130EV ASSEMBLY ADDED -110EV REMOVED | | SAT |
| 5 | 26/10/04 B3614 | PICTORIAL CHANGES TO SHOW NEW CAP AND THROTTLE. 31.5 WAS 31.0 DIMN 'A' AND MASS IN CHART AMENDED TO LATEST DATA. -230EV & -310EV ADDED TO CHART. INLET ADAPTORS ADDED. | | DRA |
| 6 | 10/03/05 B4207 | EXPLODED VIEW ON SHEET 2 AND SPARE PART No CHART ADDED | | DRA |
| 7 | 02/02/06 B4466 | ASSY -130EV DIMN 'B' WAS 85 AND DIMN 'C' WAS 50 ASSYS -150EV TO 230EV. DIMN 'B' AND DIMN 'C' WAS 50 MASSES UP TO -230 WERE IN ORDER:- 0.83, 0.85, 0.97 & 1.09Kg | | DRA |
| 8 | 12/09/06 B4387 | SHEET 2 PT No. CHART CAP CP3985-148 WAS -138 | | DRA |
| 9 | 05/03/09 B5422 | CP3985-130EV, -190EV & -310EV DELETED NON EV TYPE DATA ADDED. | | DRA |
| 10 | 11/03/09 B5422 | SHEET 3 ADDED | | DRA |
| 11 | 03/12/09 B5751 | CP3985-310/310EV ADDED. | | RLB |
| 12 | 04/12/09 B5751 | CROP VIEW CORRECTED | 1A | RLB |
| 13 | 04/12/13 B6967 | STAINLESS STEEL FOOT VERSION OF BOTH EV AND NON EV AIRJACKS ADDED 310 STROKE AIRJACK SPARE LISTS ADDED TO TABLES ON SHEETS 2 AND 3 PART NUMBERING IDENTIFICATION NOTE ADDED TO SHEET 1 | # | JN |
| 14 | 07/12/2015 B7320 | CP3945 HD VERSIONS ADDED. | # | CDA |

| | |
|---------------------------|--------------|
| SCALE 1:1 | SHEET 1 OF 3 |
| DRAWN | D.ARROWSMITH |
| APPROVED | |
| DERIVED FROM | |
| TITLE Ø54 BORE AIRJACK | |
| DRG NO. | CP3985-1CD |

A2 INSTALLATION DRAWING

If this document is printed in hardcopy, it is for information use only and therefore is not subject to updating controls. Always refer to viewer for latest issue.



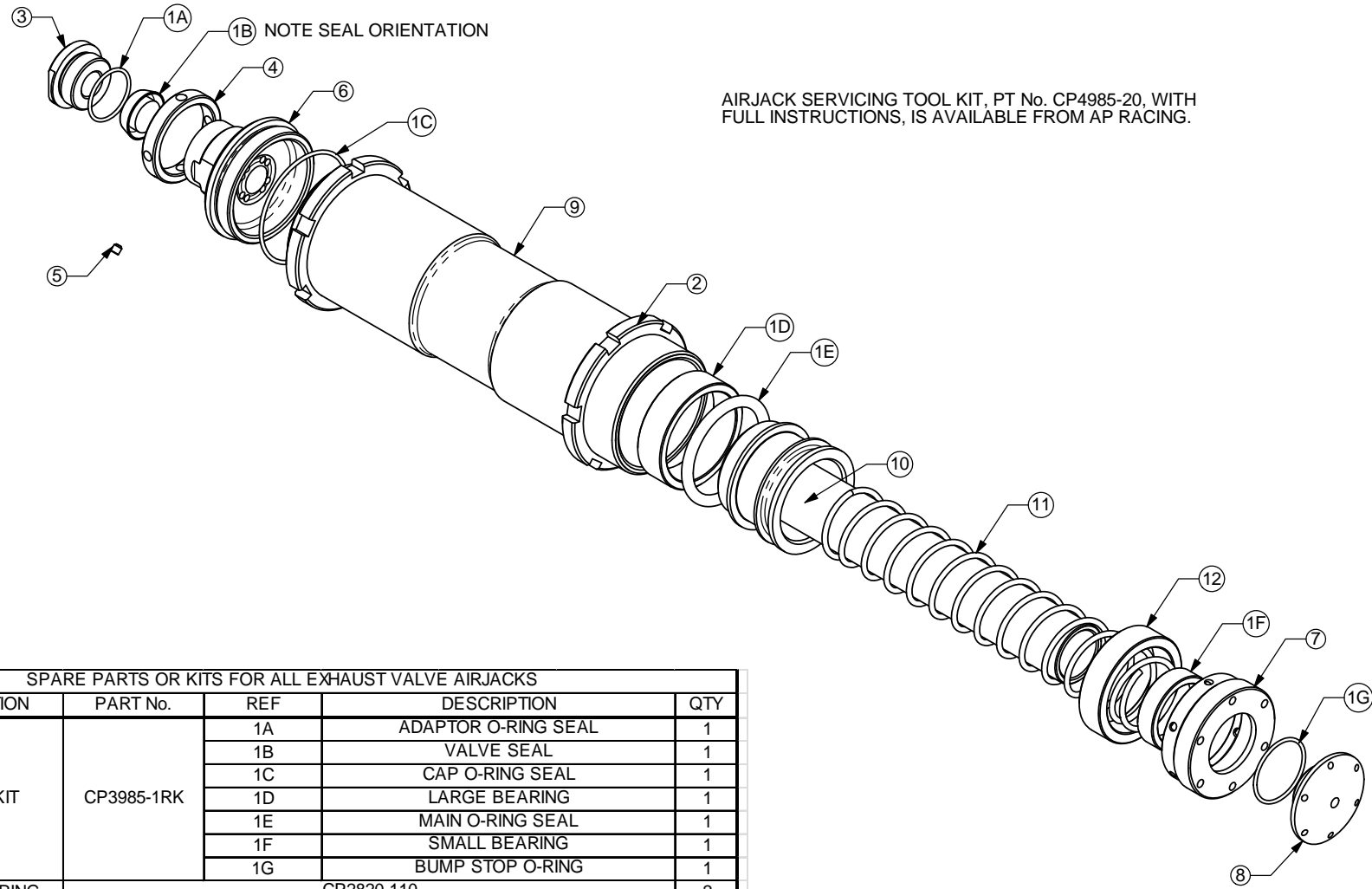
THIS DRAWING IS CONFIDENTIAL AND IS SUPPLIED ON THE EXPRESS CONDITION THAT IT SHALL NOT BE LOANED OR COPIED OR DISCLOSED TO ANY OTHER PERSON OR USED FOR ANY OTHER PURPOSE WITHOUT THE WRITTEN CONSENT OF AP RACING LTD.



AP Racing
Wheler Road
Coventry
CV3 4LB

Tel: +44 024 7663 9595
Fax: +44 024 7663 9559
e-mail: sales@ap racing.co.uk
Web site: http://www.ap racing.com

© AP Racing Ltd. 2013



SPARE PARTS OR KITS FOR ALL EXHAUST VALVE AIRJACKS

| REF | DESCRIPTION | PART No. | REF | DESCRIPTION | QTY |
|-----|-----------------|------------|------------|---------------------|-----|
| 1 | REPAIR KIT | CP3985-1RK | 1A | ADAPTOR O-RING SEAL | 1 |
| | | | 1B | VALVE SEAL | 1 |
| | | | 1C | CAP O-RING SEAL | 1 |
| | | | 1D | LARGE BEARING | 1 |
| | | | 1E | MAIN O-RING SEAL | 1 |
| | | | 1F | SMALL BEARING | 1 |
| | | | 1G | BUMP STOP O-RING | 1 |
| 2 | MOUNTING RING | | CP2820-110 | | 2 |
| 3 | INLET ADAPTOR | | CP2985-172 | | 1 |
| 4 | THROTTLE RING | | CP3985-139 | | 1 |
| 5 | M4 GRUB SCREW | | CP7073-121 | | 1 |
| 6 | END CAP | | CP3985-148 | | 1 |
| 7 | BEARING HOUSING | | CP3985-104 | | 1 |

SPARE PARTS SPECIFIC TO AIRJACK PART NUMBER

| REF | PART NUMBER | CP3985-EV150 | CP3985 | | CP3945 | | QTY |
|-----|--------------------|--------------|------------|------------|------------|------------|-----|
| | | | -230EV | CP3985-103 | CP3945-103 | CP3985-103 | |
| 8 | FOOT | CP3985-103 | CP3985-103 | CP3945-103 | CP3985-103 | CP3945-103 | 1 |
| 9 | BODY | CP3985-101 | CP3985-117 | | CP3985-118 | | 1 |
| 10 | PISTON ASSEMBLY | CP3985-4 | CP3985-6 | CP3945-6 | CP3985-7 | CP3945-7 | 1 |
| 11 | RETURN SPRING | CP3985-107 | CP3985-127 | | CP3985-128 | | 1 |
| 12 | SPACER (IF FITTED) | CP3985-143 | CP3985-131 | | CP3985-132 | | 1 |

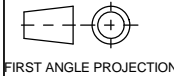
PARTS LIST FOR 'EV' VERSIONS OF AIRJACK

| Issue No. | Date & No. | Alterations | | Zone | Initials |
|-----------|------------|------------------------------------|--|------|----------|
| | | Particulars | | | |
| - | - | SEE SHEET 1 FOR ISSUE INFORMATION. | | - | - |

| | |
|---------------------------|--------------|
| SCALE 1:1 | SHEET 2 OF 3 |
| DRAWN | D.ARROWSMITH |
| APPROVED | |
| DERIVED FROM | |
| TITLE Ø54 BORE AIRJACK | |
| DRG NO. | CP3985-1CD |

A2 INSTALLATION DRAWING

If this document is printed in hardcopy, it is for information use only and therefore is not subject to updating controls. Always refer to viewer for latest issue.



THIS DRAWING IS CONFIDENTIAL AND IS SUPPLIED ON THE EXPRESS CONDITION THAT IT SHALL NOT BE LOANED OR COPIED OR DISCLOSED TO ANY OTHER PERSON OR USED FOR ANY OTHER PURPOSE WITHOUT THE WRITTEN CONSENT OF AP RACING LTD.

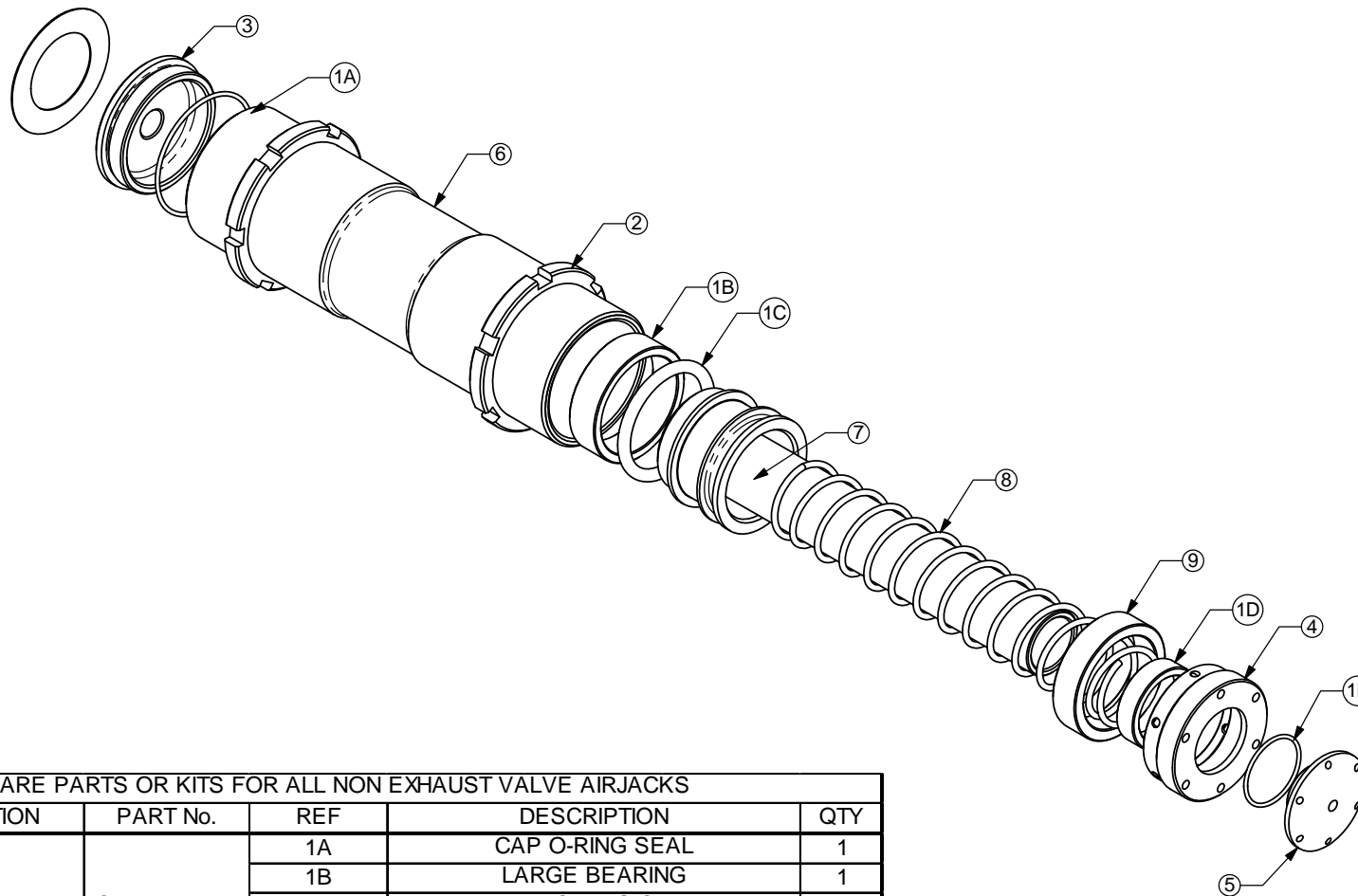


AP Racing
Wheler Road
Coventry
CV3 4LB

Tel: +44 024 7663 9595
Fax: +44 024 7663 9559
e-mail: sales@ap racing.co.uk

© AP Racing Ltd. 2013

Web site: <http://www.apracing.com>



| Issue No. | Alterations | | Zone | Initials |
|-----------|-------------|------------------------------------|------|----------|
| | Date & No. | Particulars | | |
| - | - | SEE SHEET 1 FOR ISSUE INFORMATION. | - | - |

SPARE PARTS OR KITS FOR ALL NON EXHAUST VALVE AIRJACKS

| REF | DESCRIPTION | PART No. | REF | DESCRIPTION | QTY |
|-----|-----------------|-------------|------------|------------------|-----|
| 1 | REPAIR KIT | CP3985-11RK | 1A | CAP O-RING SEAL | 1 |
| | | | 1B | LARGE BEARING | 1 |
| | | | 1C | MAIN O-RING SEAL | 1 |
| | | | 1D | SMALL BEARING | 1 |
| | | | 1E | BUMP STOP O-RING | 1 |
| 2 | MOUNTING RING | | CP2820-110 | | 2 |
| 3 | END CAP | | CP3985-157 | | 1 |
| 4 | BEARING HOUSING | | CP3985-104 | | 1 |

SPARE PARTS SPECIFIC TO AIRJACK PART NUMBER

| REF | PART NUMBER | CP3985-150 | | CP3985-230 | | CP3945-310 | | QTY |
|-----|-----------------|------------|------------|------------|------------|------------|--------|-----|
| | | CP3985 | CP3945 | CP3985 | CP3945 | CP3985 | CP3945 | |
| 5 | FOOT | CP3985-103 | CP3985-103 | CP3945-103 | CP3985-103 | CP3945-103 | | 1 |
| 6 | BODY | CP3985-101 | CP3985-117 | | CP3985-118 | | | 1 |
| 7 | PISTON ASSEMBLY | CP3985-4 | CP3985-6 | CP3945-6 | CP3985-7 | CP3945-7 | | 1 |
| 8 | RETURN SPRING | CP3985-107 | CP3985-127 | | CP3985-128 | | | 1 |

PARTS LIST FOR NON 'EV' VERSIONS OF AIRJACK

| | |
|---------------------------|--------------|
| SCALE 1:1 | SHEET 3 OF 3 |
| DRAWN | D.ARROWSMITH |
| APPROVED | |
| DERIVED FROM | |
| TITLE Ø54 BORE AIRJACK | |
| DRG NO. | CP3985-1CD |