

A1 INSTALLATION DRAWING

IF THIS DOCUMENT IS PRINTED IN HARDCOPY, IT IS FOR INFORMATION USE ONLY AND THEREFORE IS NOT SUBJECT TO UPDATING CONTROLS. ALWAYS REFER TO SOLIDWORKS VIEWER FOR LATEST ISSUE



THIS DRAWING IS CONFIDENTIAL AND IS SUPPLIED ON THE EXPRESS CONDITION THAT IT SHALL NOT BE LOANED OR COPIED OR DISCLOSED TO ANY OTHER PERSON OR USED FOR ANY OTHER PURPOSE WITHOUT THE WRITTEN CONSENT OF AP RACING LTD.

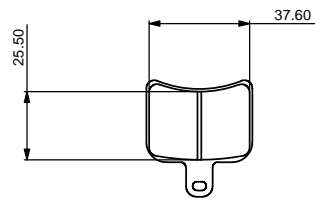


AP Racing
Wheler Road
Coventry
CV3 4LB

Tel: +44 (0) 24 7663 9595
Fax: +44 (0) 24 7663 9559
e-mail: engineering@apracings.co.uk
Web site: http://www.apracings.com

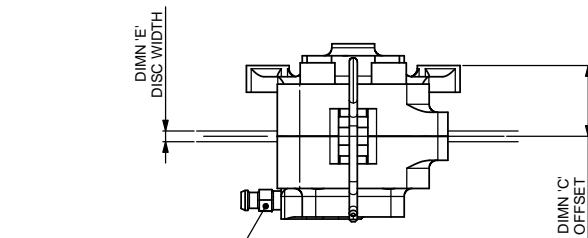
© AP Racing Ltd. 2005

DISC & CALIPER MOUNTING TOLERANCES TO BE SUCH THAT DISC IS LOCATED CENTRALLY IN CALIPER TO WITHIN ±0.5mm

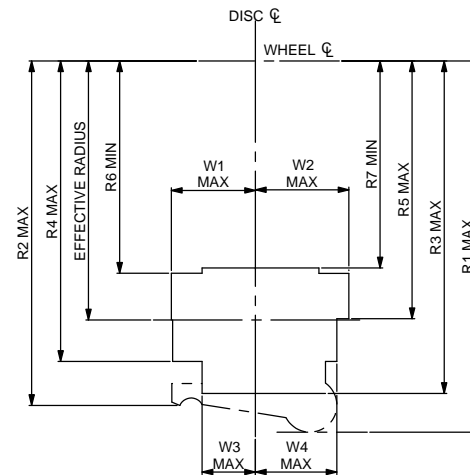


CP4226 PAD FAMILY

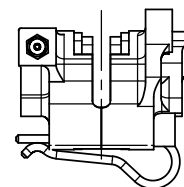
PAD THICKNESS - 0.7 CM
PAD AREA - 9.40 SQ.CM
PAD VOLUME - 3.76 CU.CM



BLEED SCREW TIGHTENING TORQUE 5.5 Nm (4 Lbs ft).



CALIPER RADIAL PROFILE FOR 220 DIA DISC



GENERAL DESCRIPTION

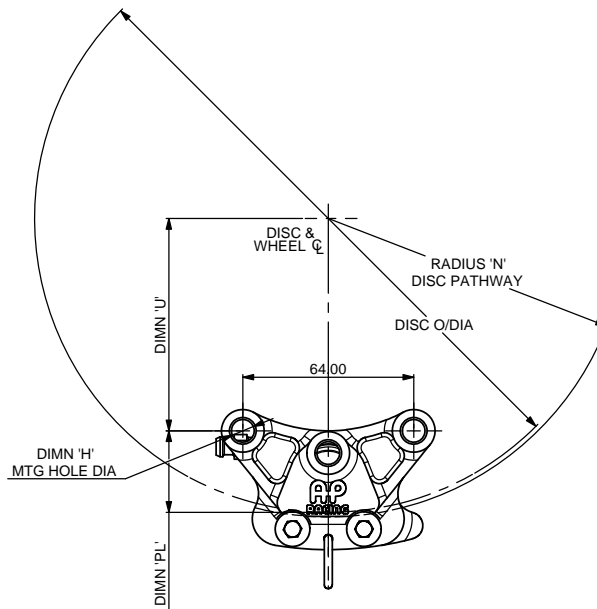
THIS IS A TWO PISTON, TWO PIECE MOTORCYCLE CALIPER DESIGNED TO OPERATE ON AN IRON DISC UP TO Ø220.0 MAX. THE CALIPER IS MACHINED FROM SOLID ALUMINIUM ALLOY.

TYPICAL APPLICATIONS - MOTORCYCLE REAR CALIPER

PISTON DIAMETER - 1.00" (25.40mm)
TOTAL PISTON AREA - 10.13 SQ.CM (1.570" SQ)
BODY MATERIAL - ALUMINIUM ALLOY
PISTON MATERIAL - ALUMINIUM ALLOY (STANDARD)
BLEED SCREW - M7 x 1.0
HYDRAULIC FEED - M10 x 1.0

DETAILS

- DIMENSION 'PL' TOP OF PAD MATERIAL TO MOUNTING HOLE CENTRE LINE WITH PAD SITTING DOWN ON LEDGE.
- DIMENSION 'U' WHEEL CENTRE TO CALIPER MOUNTING HOLE CENTRE LINE.
- DIMENSION 'C' (DISC DIAMETER/2) - 'PL' OFFSET - DISC CENTRE LINE TO CALIPER MOUNTING FACE.
- DIMENSION 'H' MOUNTING HOLE DIAMETER
- RADIUS 'N' RADIUS OF DISC PATHWAY
- EFFECTIVE RAD RAD FROM WHEEL Ø TO NOM PISTON Ø



AP RACING TECHNICAL SECTION WILL BE PLEASED TO ADVISE ON THE MOST SUITABLE EQUIPMENT FOR ANY PARTICULAR APPLICATION.

CALIPER PART NO. SELECTION

1. SELECT ASSEMBLY FROM TABLE.
2. SELECT SUFFIX CHARACTERS AS FOLLOWS:-
1st CHARACTER - DENOTES POSITION OF INLET ADAPTOR
S' SIDEFEED, E' ENDFEED
2nd CHARACTER - DENOTES THE LOAD OF ANTI-KNOCKBACK SPRINGS FITTED.
0' - NO SPRINGS
'4' - 4lb (17.80N) SPRINGS
3rd CHARACTER - DENOTES ALTERNATIVE PISTON MATERIAL
L' - STEEL M' - TITANIUM

EXAMPLE PART No - CP4226-2S0

SHOULD PISTONS BE INADVERTANTLY REMOVED, THEY SHOULD BE WIPED CLEAN AND SMEARED WITH AP RACING BRAKE FLUID BEFORE REPLACEMENT.

THE CORRECT PAD FAMILY NUMBER FOR THIS CALIPER IS CP4226. PADS SHOULD BE ORDERED SEPARATELY. A WIDE VARIETY OF MATERIALS ARE AVAILABLE:- PLEASE CONTACT AP RACING FOR ADVICE.

CALIPER PART No.	DISC DIA	DISC WIDTH DIMN 'E'	DIMN 'U'	DIMN 'PL'	DIMN 'C'	DIMN 'H'	RAD 'N'
CP4226-2	220.0	4.00	79.50	30.50	26.50	M8 x 1.25	111.75

	DISC Ø	EFFECTIVE RADIUS	R1	R2	R3	R4	R5	R6	R7	W1	W2	W3	W4
CP4226-2	220.0 8.66"	97.0	139.0	129.0	124.5	112.5	96.5	79.5	77.5	31.5	35.0	20.0	30.5

Issue No.	Alterations		Zone	Initials
	Date & No.	Particulars		
4	01/04/08 B5065	RE-DRAWN ON SOLID WORKS		

SCALE 2:1	SHEET 1 OF 1
DRAWN	D.ARROWSMITH
APPROVED	
DERIVED FROM	
TITLE	
Ø1.00" x 2 REAR M/CYCLE CALIPER	
DRG NO.	CP4226-1 CD