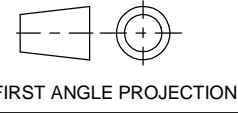


A2 INSTALLATION DRAWING

If this document is printed in hardcopy, it is for information use only and therefore is not subject to updating controls. Always refer to viewer for latest issue.

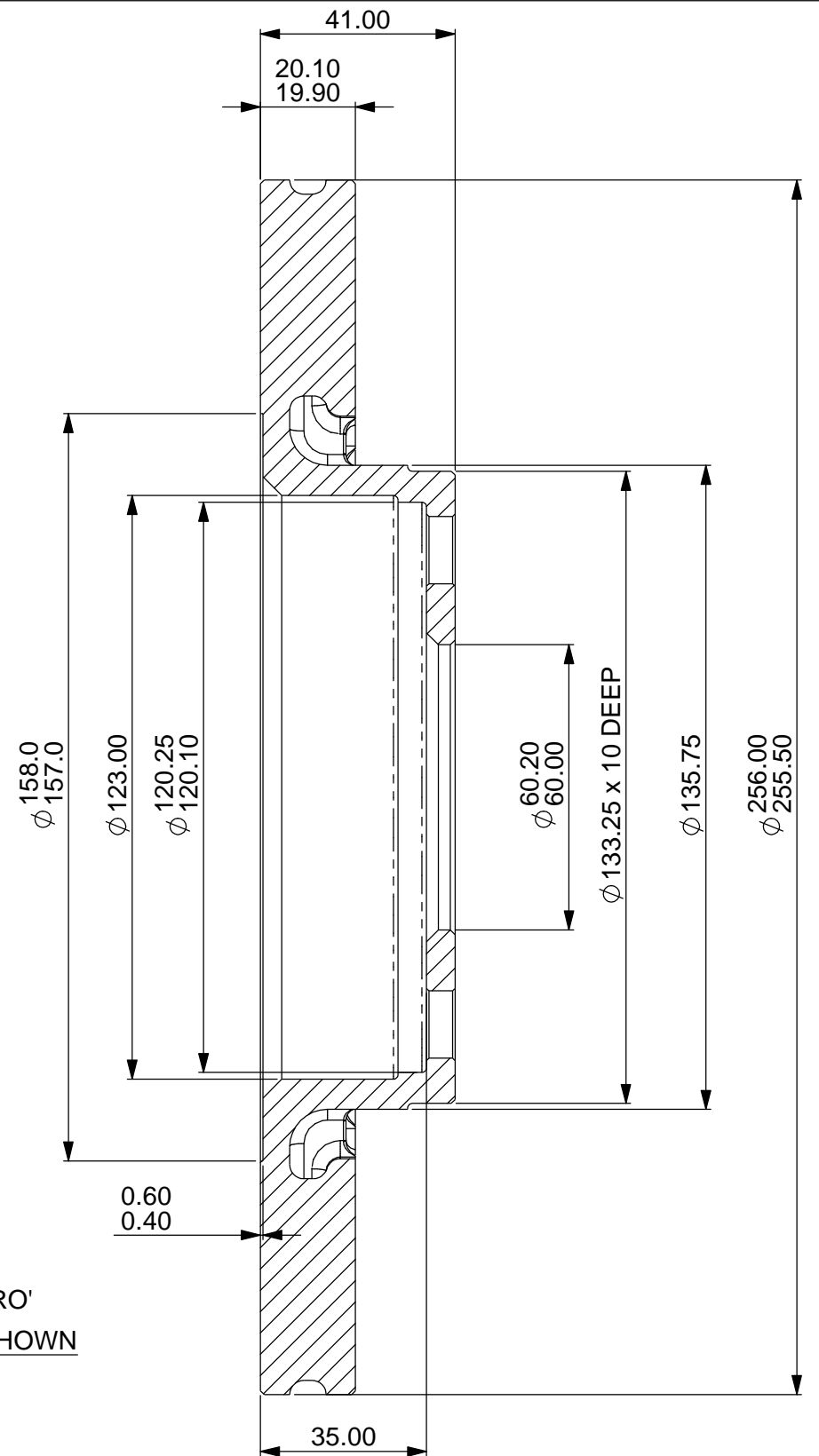
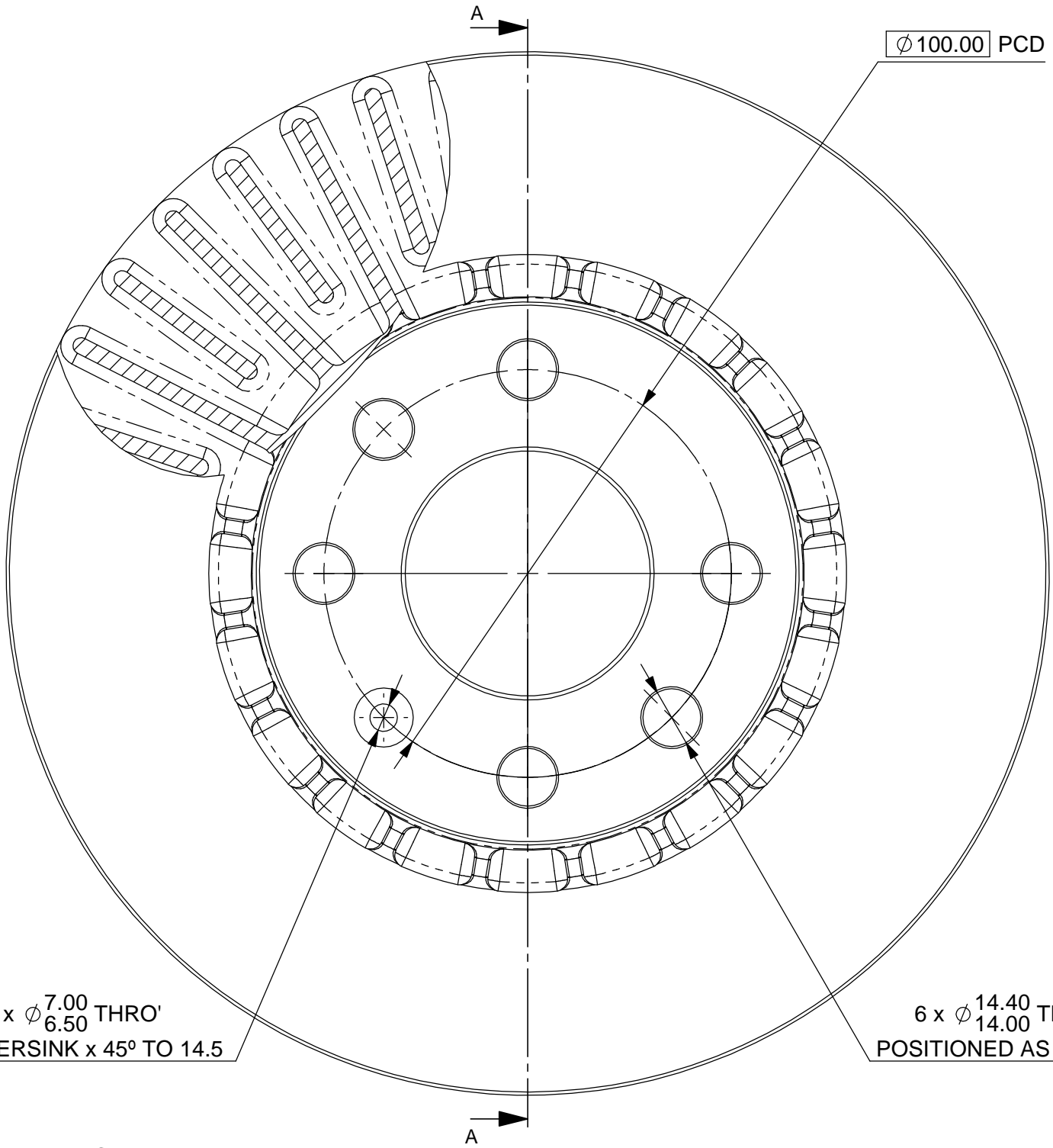


THIS DRAWING IS CONFIDENTIAL AND IS SUPPLIED ON THE EXPRESS CONDITION THAT IT SHALL NOT BE LOANED OR COPIED OR DISCLOSED TO ANY OTHER PERSON OR USED FOR ANY OTHER PURPOSE WITHOUT THE WRITTEN CONSENT OF AP RACING LTD.



AP Racing
 Wheler Road
 Coventry
 CV3 4LB
 Tel: +44 024 7663 9595
 Fax: +44 024 7663 9559
 e-mail: sales@ap racing.co.uk
 Web site: http://www.ap racing.com

Issue No.	Date & No.	Alterations		Zone	Initials
		Particulars			
01	10/12/13 B6960	FIRST ISSUE		#	JN



SECTION A-A

DISC PART NUMBERS
 CP4740 -100P:F4 NON HANDED DISC

THIS 40 STRAIGHT VANED DISC HAS A MASS OF 4.7kg

SUFFIX TO DISC PART NUMBERS:
SUFFIX **DETAILS**
 P PLAIN (NO GROOVES)
 F4 FIA FORMULA 4 APPLICATION

THIS DISC WAS DESIGNED TO WORK WITH A D50 PADS.

FOR DISC MOUNTING TECHNIQUES, BEDDING PROCEDURE AND DISC COOLING RECOMMENDATIONS SEE AP RACING BRAKE DISC CATALOGUE.

SCALE 1:1		SHEET 1 OF 1	
DRAWN	James Nurse		
APPROVED			
DERIVED FROM	CP4740-100		
TITLE			
F4 TOP HAT VENTED DISC			
$\phi 256$ x20 - 40 VANES			
DRG NO.	CP4740-100P:F4 CD		