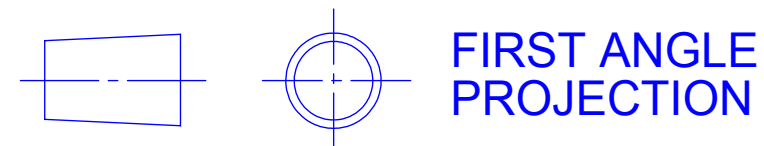


A0 INSTALLATION DRAWING

IF THIS DOCUMENT IS PRINTED IN HARDCOPY IT IS FOR INFORMATION USE ONLY AND THEREFORE IS NOT SUBJECT TO UPDATING CONTROLS. ALWAYS REFER TO SOLIDWORKS VIEWER FOR LATEST ISSUE

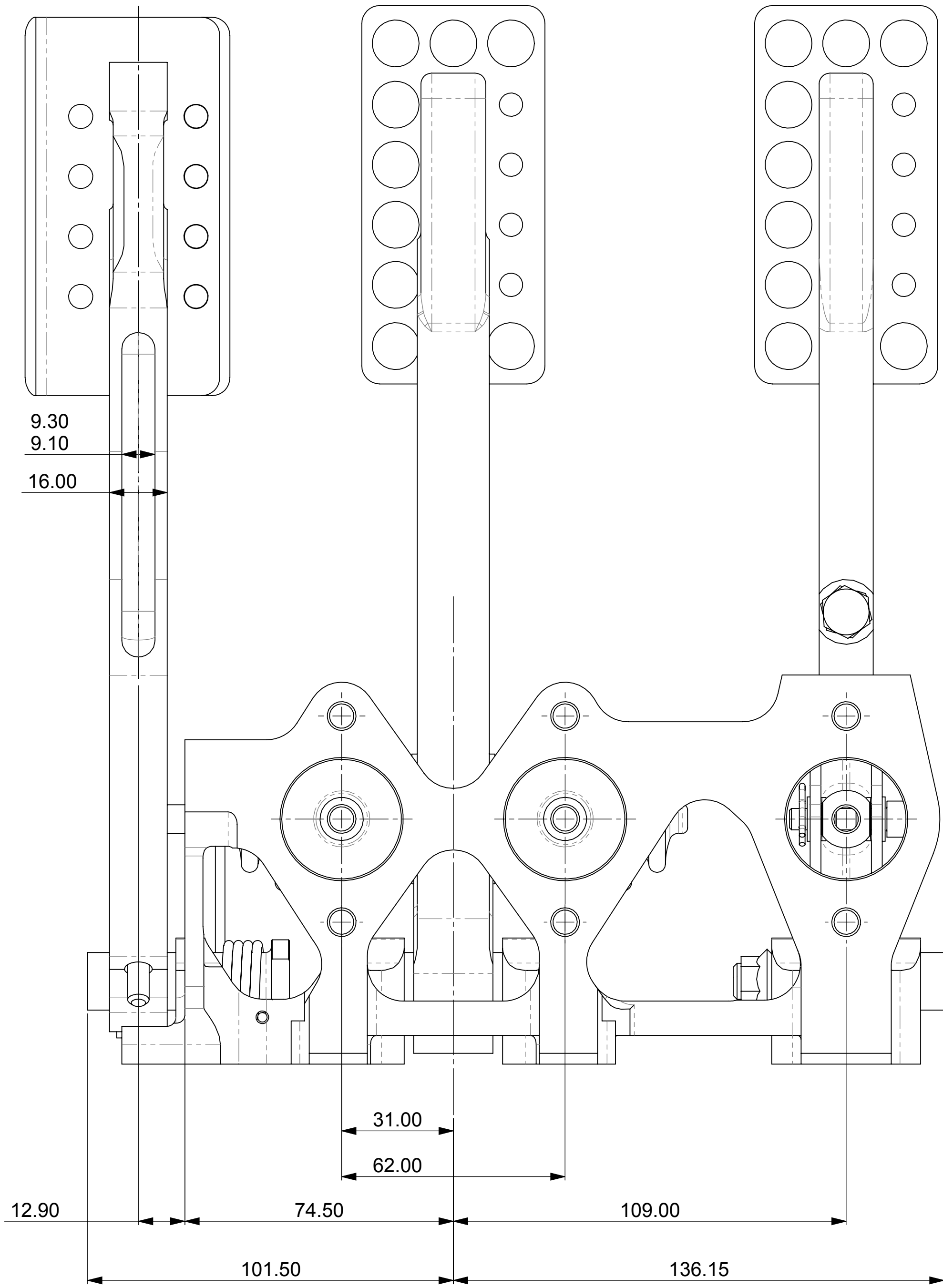
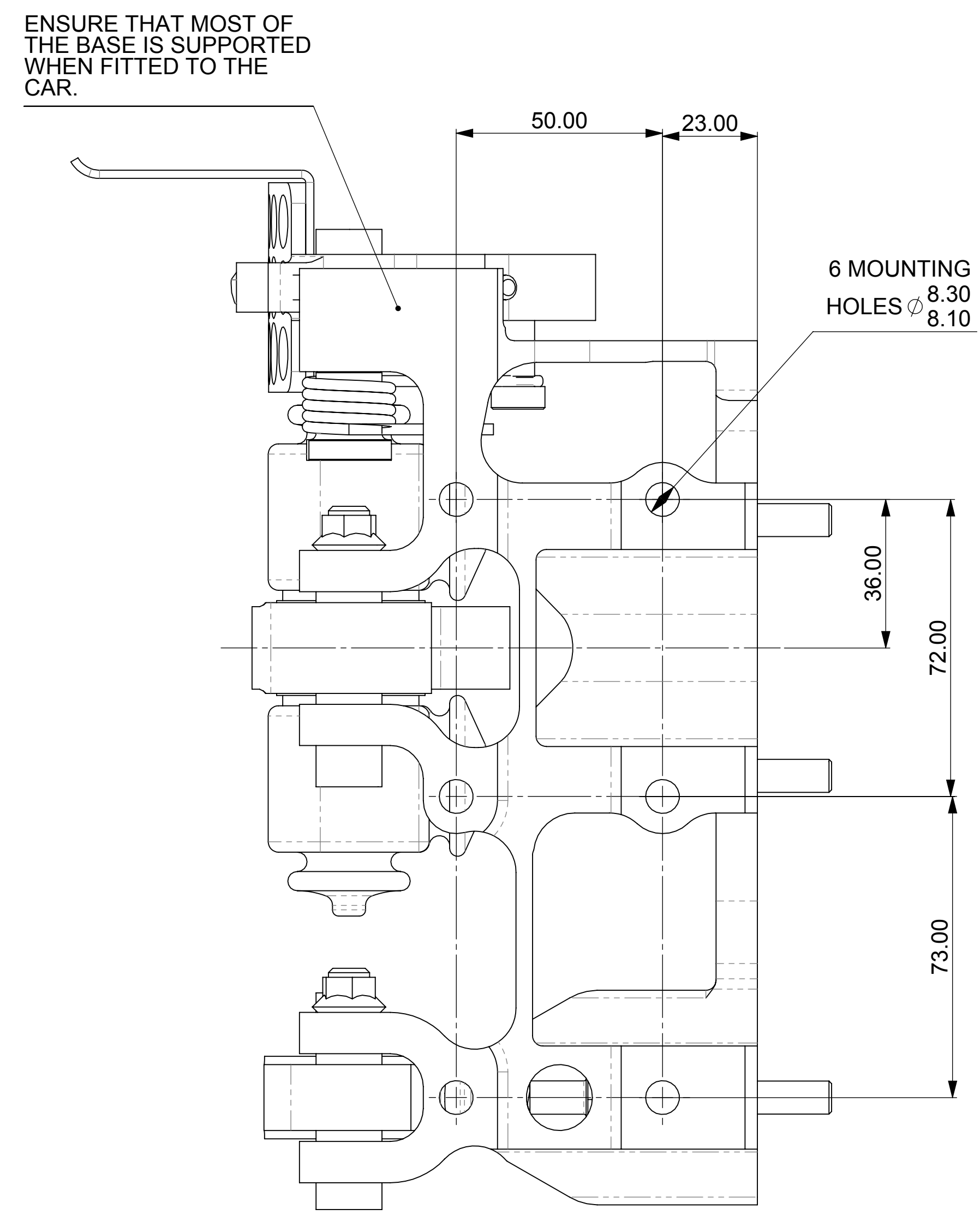


THIS DRAWING IS CONFIDENTIAL AND IS SUPPLIED ON THE EXPRESS CONDITION THAT IT SHALL NOT BE LOANED OR COPIED OR DISCLOSED TO ANY OTHER PERSON OR USED FOR ANY OTHER PURPOSE WITHOUT THE WRITTEN CONSENT OF AP RACING LTD.



AP Racing
 Wheeler Road
 Coventry
 CV3 4LB
 Tel: +44 024 7663 9555
 Fax: +44 024 7663 9559
 e-mail: sales@apracings.co.uk
 Web site: HTTP://www.apracings.com

Issue No.	Alterations		Zone	Initials
	Date & No.	Particulars		
1	08/07/2010	FIRST ISSUE	#	CDA
2	26/07/2012	SHEET 3 ADDED	#	RS



GENERAL DESCRIPTION

THIS PEDAL BOX IS A GENERIC RACING PEDAL BOX DESIGN. DESIGNED FOR COMFORT AND CONTROL. THIS UPDATED PEDAL BOX HAS A NEW OPTIMISED MACHINED FROM BILLET BASEPLATE AND PEDALS. THE THROTTLE HAS BEEN UPDATED TO ADD ADDITIONAL FEATURES TO AID CONNECTION TO BELL CRANKS AND CABLES.

FEATURES

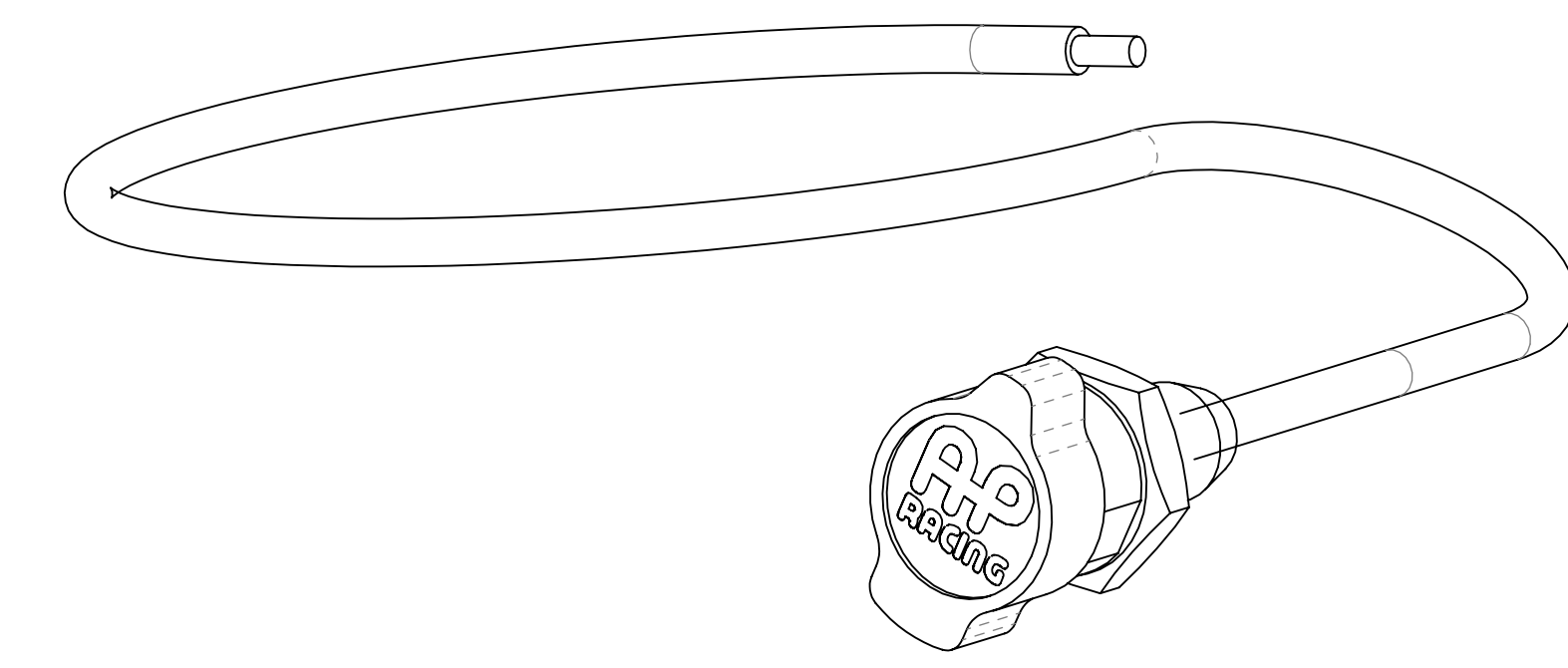
- OPTIMISED, LIGHTWEIGHT, MACHINED FROM BILLET BASE PLATE.
- OPTIMISED, LIGHTWEIGHT CLUTCH AND BRAKE PEDAL, WITH IMPROVED TWIST DISPLACEMENT.
- NEW FORGED THROTTLE PEDAL WITH ADDITIONAL FEATURES.
- ADJUSTABLE RATIO PEDALS.
- ALL THREADS ARE METRIC, EXCEPT THOSE MENTIONED BELOW.
- Ø10 BALANCE BAR
- ADJUSTABLE STOPS ON CLUTCH AND THROTTLE PEDALS.
- PEDAL BOX WEIGHT IS 2.50 Kg (CP2623 MASTER CYLINDERS APPROX 0.31Kg EACH)
- CABLE ADJUSTER INCLUDED.
- ALL PEDALS HAVE BALL BEARING PIVOTS.

PART NUMBER

CP5500-505MET - METRIC, PEDAL BOX WITH BRAKE, CLUTCH AND THROTTLE

CP5500-505UNF - IMPERIAL, PEDAL BOX WITH BRAKE, CLUTCH AND THROTTLE
 THE ONLY THREADS THAT ARE IMPERIAL ARE THE 3 CLEVIS'S THAT ATTACH TO THE MASTER CYLINDER PUSHRODS.

BORE SIZE	BRAKE PEDAL	CLUTCH PEDAL
Ø14.0mm (0.551")	CP2623-88PRM088	CP2623-88PRM088
Ø15.0mm (0.591")	CP2623-89PRM088	CP2623-89PRM088
Ø15.9mm (0.625") 5/8"	CP2623-90PRM088	CP2623-90PRM088
Ø16.8mm (0.661")	CP2623-905PRM088	CP2623-905PRM088
Ø17.8mm (0.700")	CP2623-91PRM088	CP2623-91PRM088
Ø19.1mm (0.750") 3/4"	CP2623-92PRM088	CP2623-92PRM088
Ø20.6mm (0.842") 13/16"	CP2623-93PRM088	CP2623-93PRM088
Ø22.2mm (0.875") 7/8"	CP2623-94PRM088	CP2623-94PRM088
Ø23.8mm (0.937") 15/16"	CP2623-95PRM088	CP2623-95PRM088
Ø25.4mm (1.000")	CP2623-96PRM088	CP2623-96PRM088



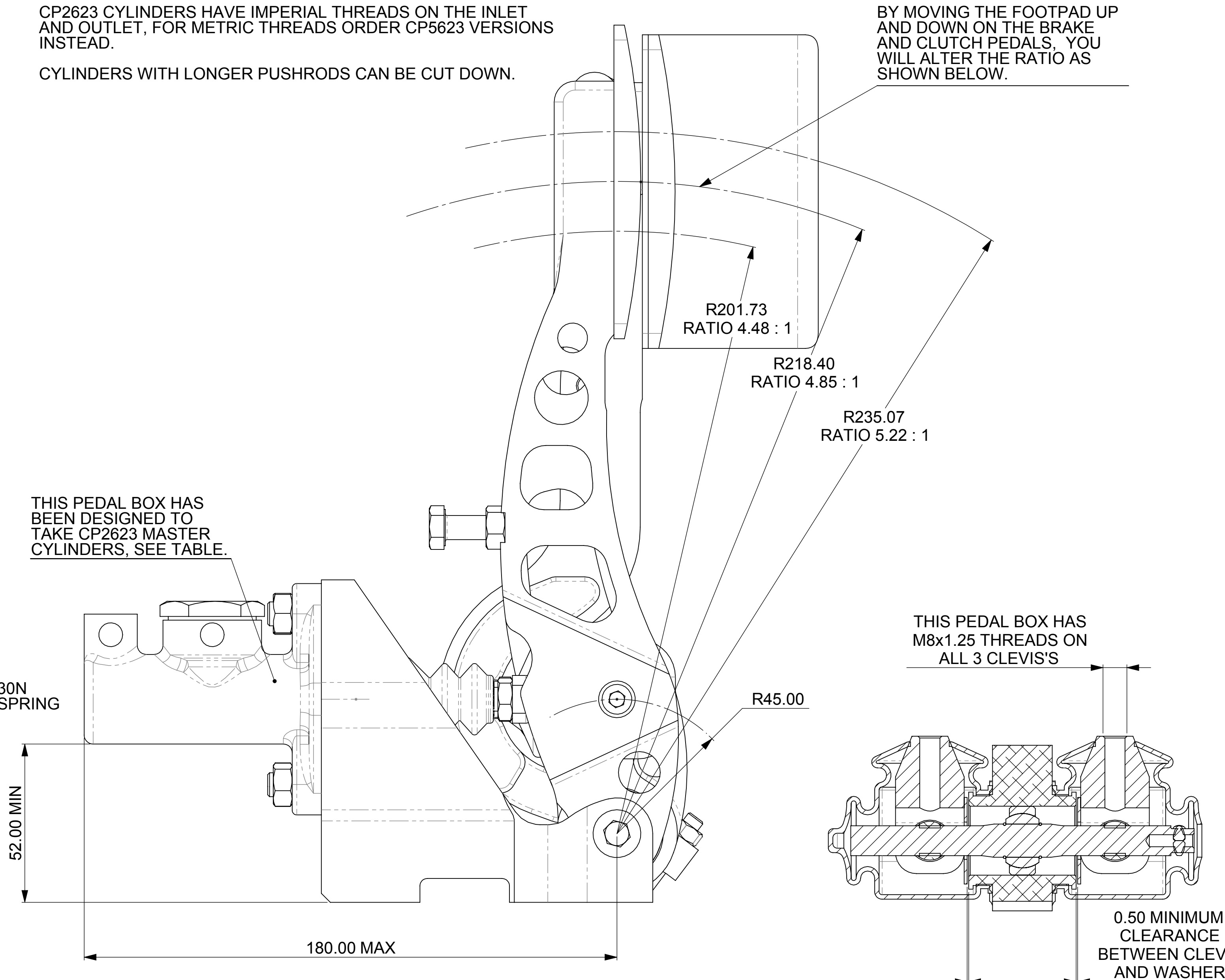
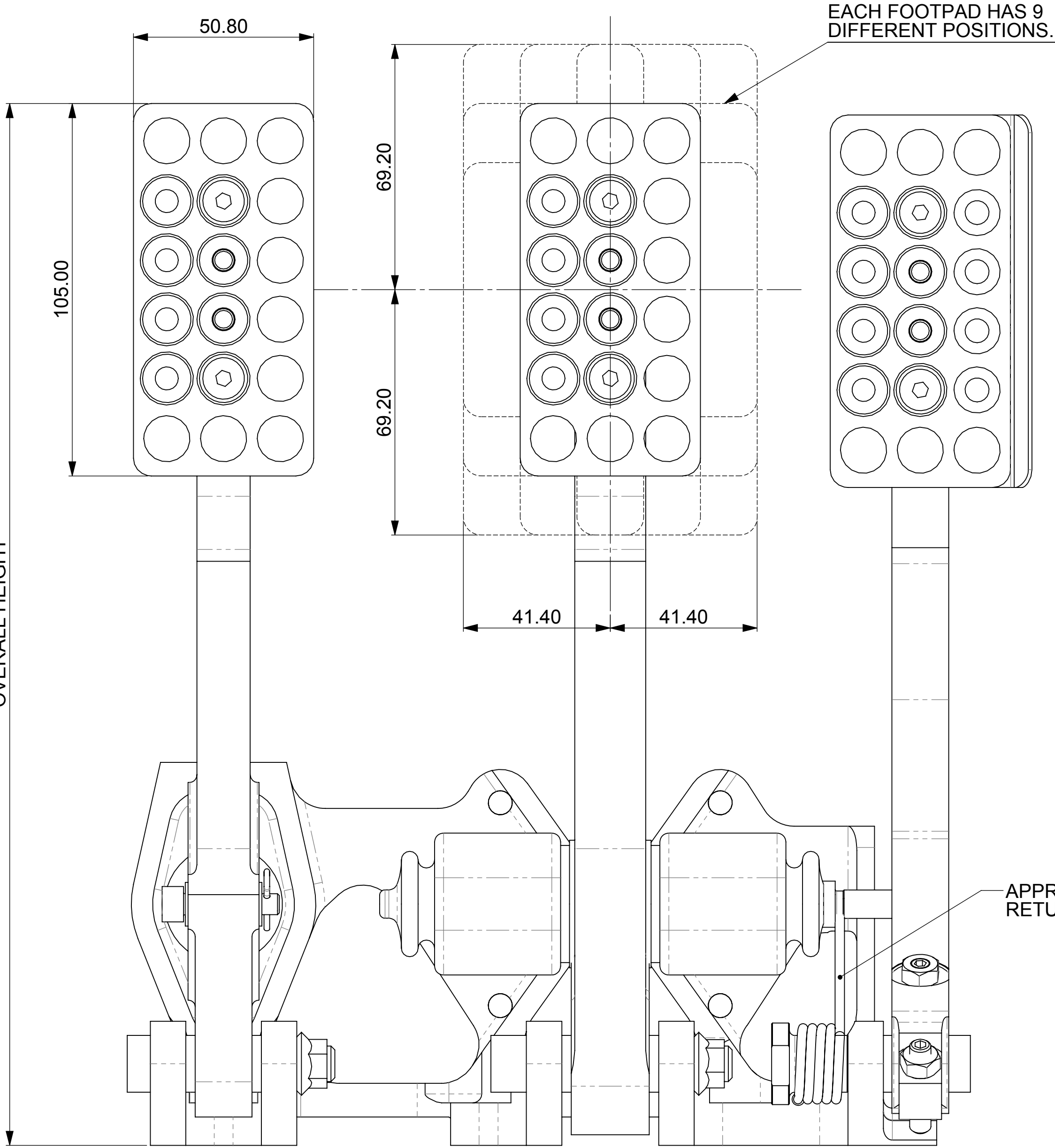
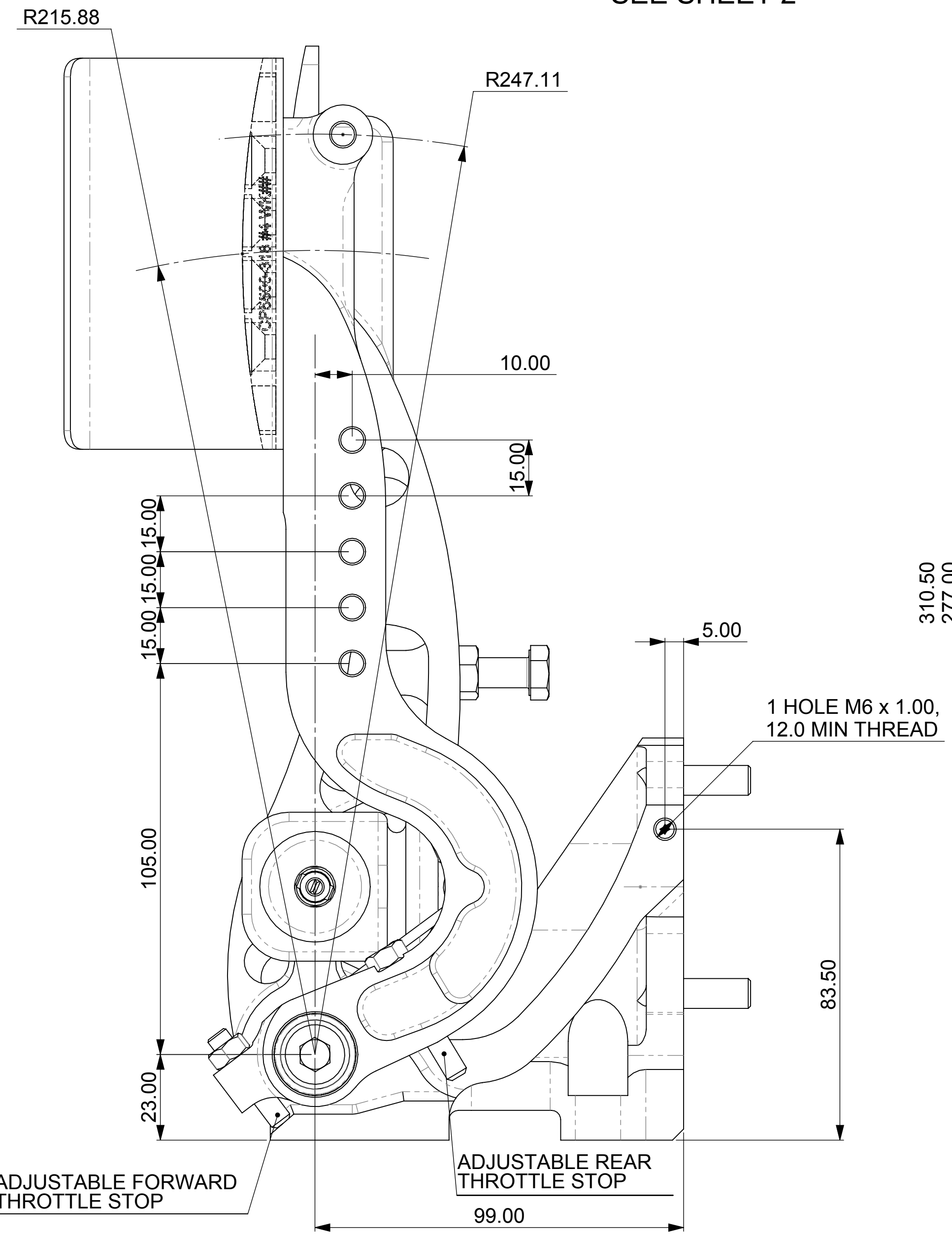
THIS TABLE SHOWS THE RECOMMENDED PUSHROD LENGTHS FOR CYLINDERS IN THIS BOX.

IF YOU ARE ORDERING THE CP5500-505UNF, THEN MAKE SURE YOU ORDER YOUR CYLINDERS WITH THE 'PRT' EXTENSION AND NOT THE 'PRM', eg CP2623-91PRT088

CP2623 CYLINDERS HAVE IMPERIAL THREADS ON THE INLET AND OUTLET, FOR METRIC THREADS ORDER CP5623 VERSIONS INSTEAD.

CYLINDERS WITH LONGER PUSHRODS CAN BE CUT DOWN.

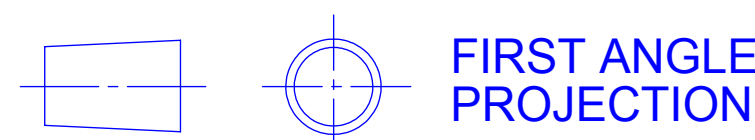
FOR OPTIONAL EXTRAS & SPARES SEE SHEET 2



SCALE 1:1	SHEET 1 OF 3
DRAWN	Chris Arrowsmith
APPROVED	
DERIVED FROM	
TITLE	
GENERIC FLOOR MTG	
PEDAL BOX	
DRG NO.	CP5500-505CD

A0 INSTALLATION DRAWING

IF THIS DOCUMENT IS PRINTED IN HARD COPY IT IS FOR INFORMATION USE ONLY AND THEREFORE IS NOT SUBJECT TO UPDATING CONTROLS. ALWAYS REFER TO SOLIDWORKS VIEWER FOR LATEST ISSUE



THIS DRAWING IS CONFIDENTIAL AND IS SUPPLIED ON THE EXPRESS CONDITION THAT IT SHALL NOT BE LOANED OR COPIED OR DISCLOSED TO ANY OTHER PERSON OR USED FOR ANY OTHER PURPOSE WITHOUT THE WRITTEN CONSENT OF AP RACING LTD.



AP Racing
 Coventry Road
 CV3 4LB
 Tel: +44 024 7663 9595
 Fax: +44 024 7663 9599
 e-mail: sales@apracings.co.uk
 Web site: HTTP://www.apracings.com

© AP Racing Ltd. 2005

Alterations

Issue No. Date & No. Particulars Zone Initials

SEE SHEET 1 FOR ISSUE INFORMATION.

OPTIONAL EXTRAS

THROTTLE RELEASE KIT
 PART NUMBER: CP5500-44
 SOLD SEPARATELY

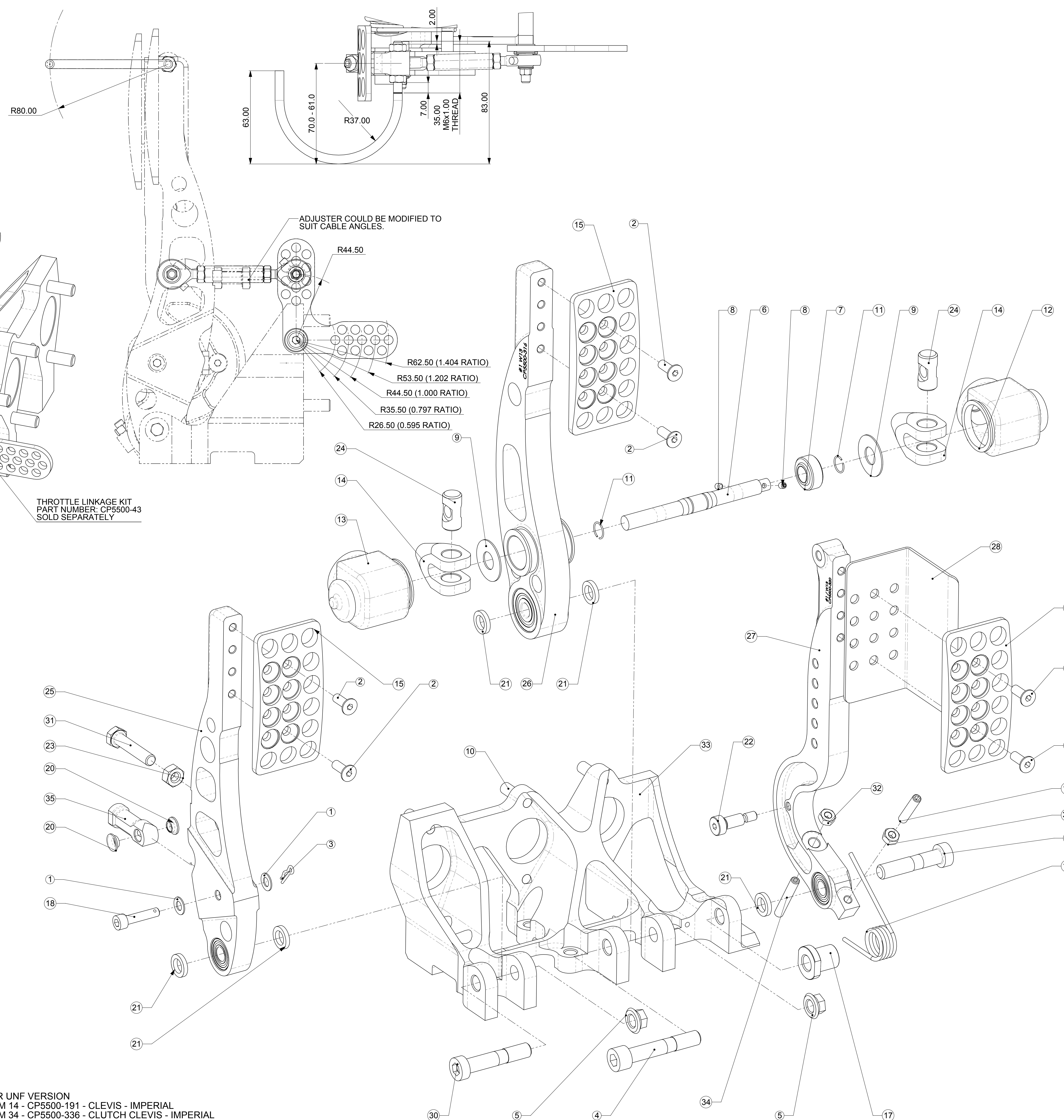
LARGER FOOTPAD
 PART NUMBER: CP5500-330
 SOLD SEPARATELY

THROTTLE LINKAGE KIT
 PART NUMBER: CP5500-43
 SOLD SEPARATELY

SPARES LIST

ITEM NO.	PART NUMBER	DESCRIPTION	Default/QTY.
1	CP2494-1305	WASHER	2
2	CP4350-106	M6 x 14 SCREW, COUNTERSUNK	6
3	cp5119-134	PAD RETAINING R CLIP	1
4	CP5200-173	M10 x 1.50 SOCKET HEAD CAP SCREW	1
5	CP5427-101	M10 KAYLOCK NUT	2
6	cp5500-105	BALANCE BAR	1
7	CP5500-106	SPHERICAL BEARING	1
8	cp5500-113st	SCREW M4 x 5	2
9	CP5500-124	WASHER	2
10	cp5500-133	STUD M8x1.25, 28.0 LONG	6
11	CP5500-148	SNAP RING	2
12	CP5500-150 (MODIFIED)	RUBBER BOOT	1
13	CP5500-150	RUBBER BOOT	1
14	cp5500-312	CLEVIS - METRIC	2
15	CP5500-318	FOOTPAD	3
16	CP5500-321	TORSION SPRING	1
17	CP5500-322	SPRING SUPPORT BUSH	1
18	cp5500-323	CLUTCH CLEVIS PIVOT RETAINER	1
19	CP5500-324	M6 SCREW x 30, FLAT GRUB	1
20	CP5507-131	GLYD RING BEARING	2
21	cp5518-127	SPACER	5
22	CP7033-111	M6 SCREW, Ø8 SHOULDER	1
23	ME21002	M8 LOCK NUT	1
24	cp5500-108	BARREL NUT	2
25	CP5500-41	CLUTCH PEDAL SUB-ASSY	1
26	CP5500-40	BRAKE PEDAL SUB-ASSY	1
27	CP5500-42	THROTTLE PEDAL SUB-ASSY	1
28	CP5500-329	THROTTLE GUARD	1
29	CP4296-116	M10 x 1.50 SOCKET HEAD CAP SCREW	1
30	CP5500-331	M10 x 1.50 SOCKET HEAD CAP SCREW	1
31	CP5500-134	M8 x 1.50 HEX BOLT	1
32	ME21001	M6 x 1.00 NUT	2
33	cp5500-340	BASE PLATE	1
34	CP5500-338	M6 SCREW x 40, FLAT GRUB	1
35	CP5500-314	METRIC CLUTCH CLEVIS	1
36	cp5500-345	CLEVIS - UNF	2

FOR UNF VERSION
 ITEM 14 - CP5500-191 - CLEVIS - IMPERIAL
 ITEM 34 - CP5500-336 - CLUTCH CLEVIS - IMPERIAL



SCALE 1:1 SHEET 2 OF 3

DRAWN Chris Arrowsmith

APPROVED

DERIVED FROM

TITLE

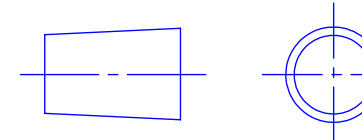
GENERIC FLOOR MTG

PEDAL BOX

DRG NO. CP5500-505CD

A0 INSTALLATION DRAWING

IF THIS DOCUMENT IS PRINTED IN HARDCOPY IT IS FOR INFORMATION USE ONLY AND THEREFORE IS NOT SUBJECT TO UPDATING CONTROLS. ALWAYS REFER TO SOLIDWORKS VIEWER FOR LATEST ISSUE



FIRST ANGLE PROJECTION

THIS DRAWING IS CONFIDENTIAL AND IS SUPPLIED ON THE EXPRESS CONDITION THAT IT SHALL NOT BE LOANED OR COPIED OR DISCLOSED TO ANY OTHER PERSON OR USED FOR ANY OTHER PURPOSE WITHOUT THE WRITTEN CONSENT OF AP RACING LTD.



AP Racing
Wheler Road
Coventry
CV3 4LB

Tel: +44 024 7663 9595
Fax: +44 024 7663 9559
e-mail: sales@aprac.com

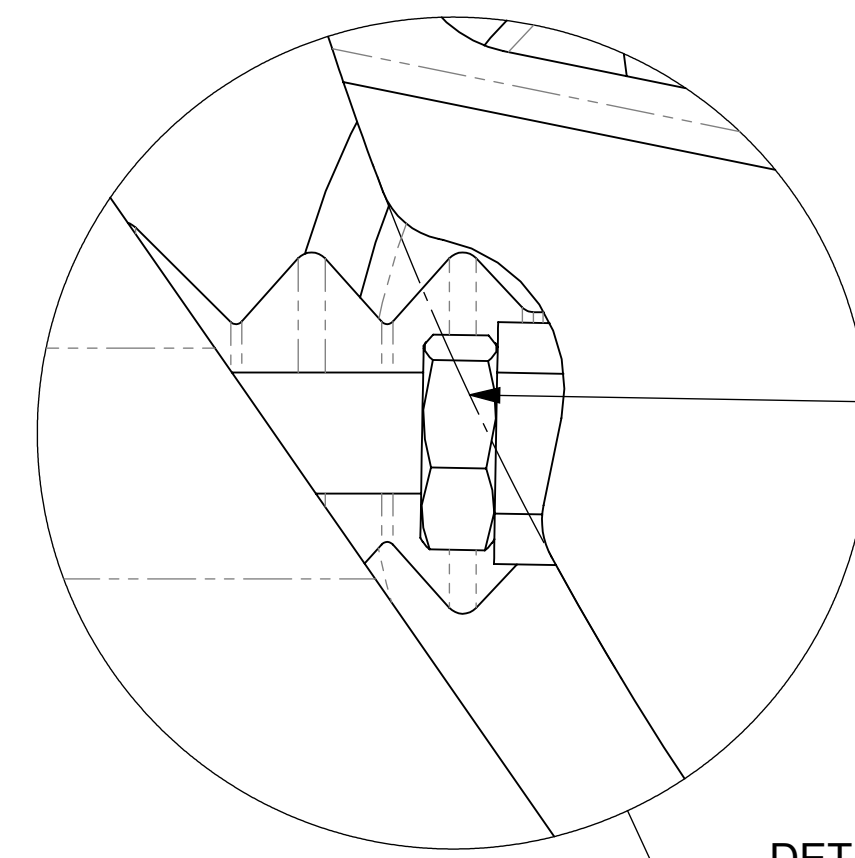
© AP Racing Ltd. 2005 Web site: HTTP://www.aprac.com

DESCRIPTION

POSSIBLE CLUTCH PEDAL NUT INTERFERENCE, MODIFICATION HAS BEEN MADE TO STOP INTERFERENCE, DETAIL A BELOW SHOWS AN EXAMPLE COLLISION.

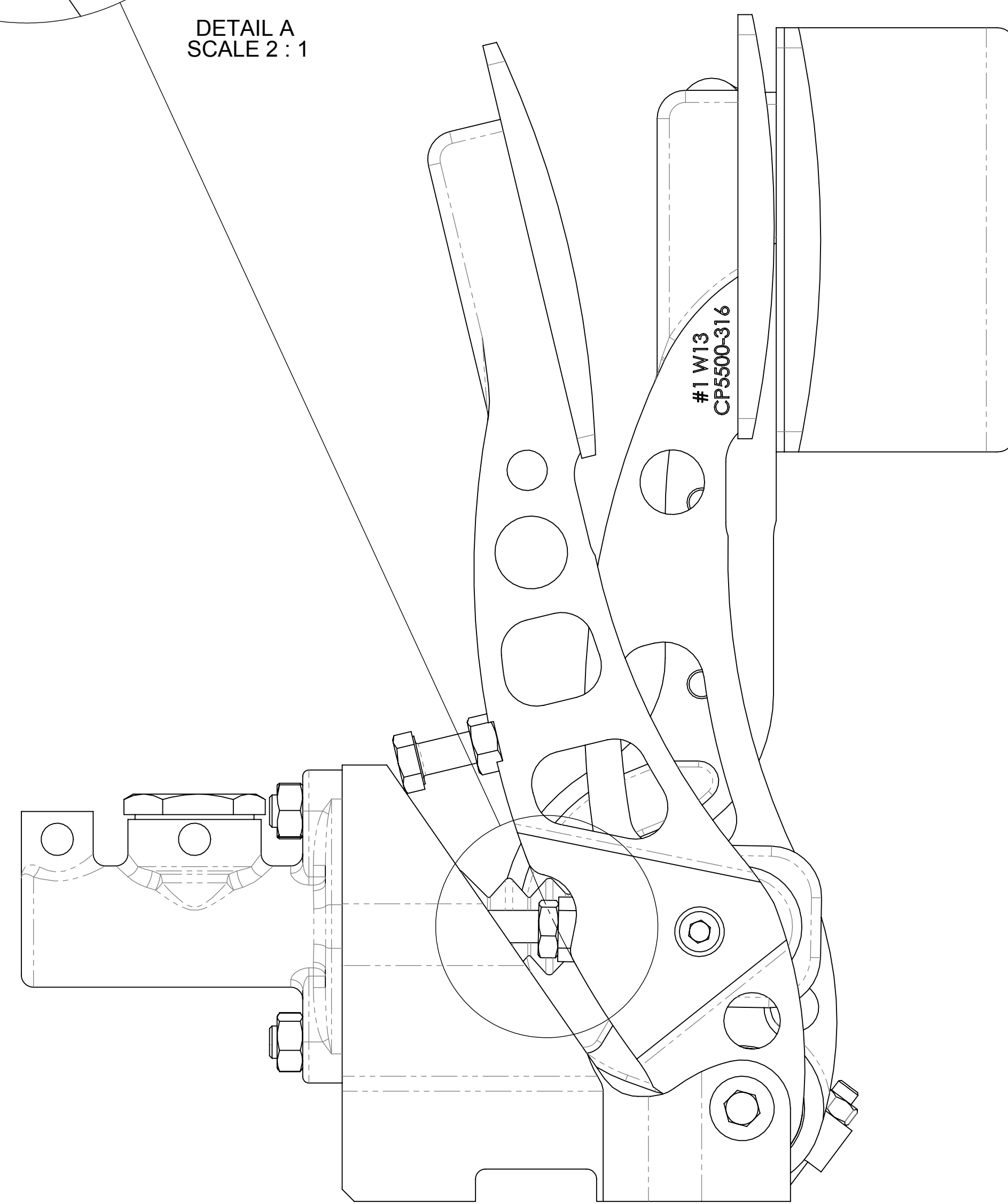
PLEASE USE GRAPH TO ASSESS WHETHER A MODIFICATION IS REQUIRED.

WHERE MODIFICATION IS REQUIRED REFER TO VEIW LABLED 'PEDAL MODIFICATION'. THIS DETAILS THE MAXIMUM AMOUNT OF MATERIAL THAT CAN BE REMOVED.

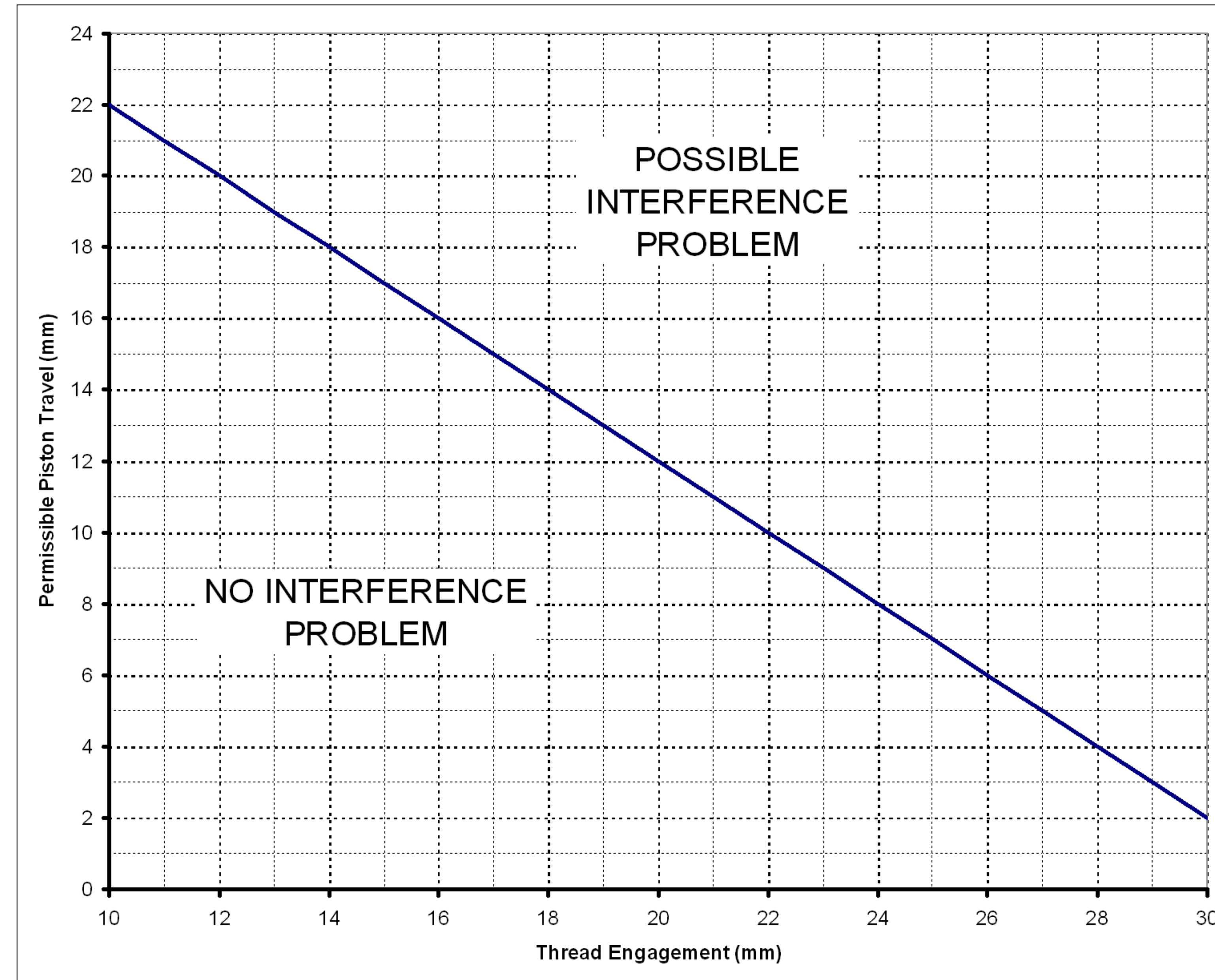


EXAMPLE CONDITION WHERE NUT WILL INTERFERE AND MODIFICATION IS NECESSARY.

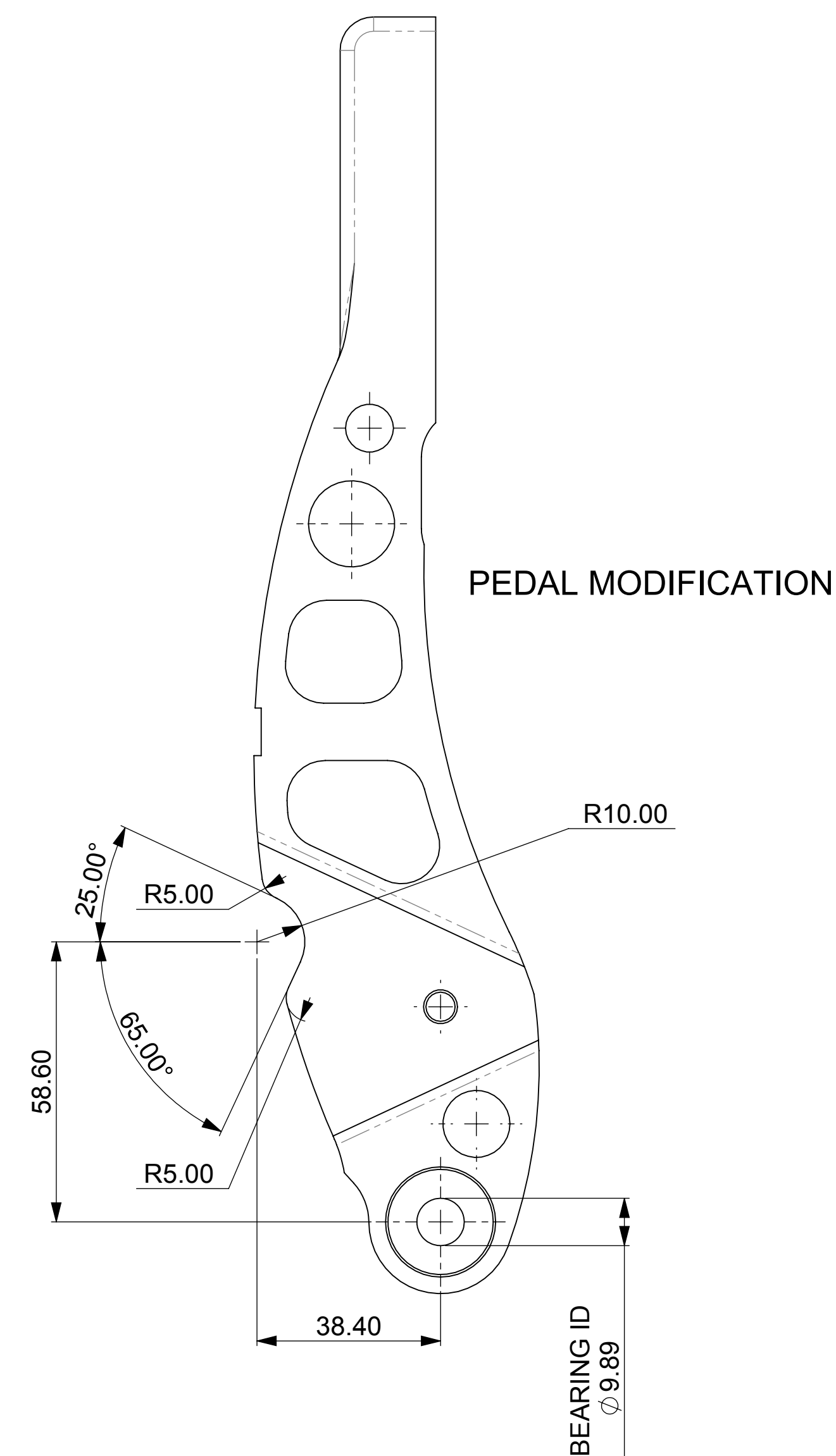
DETAIL A
SCALE 2 : 1



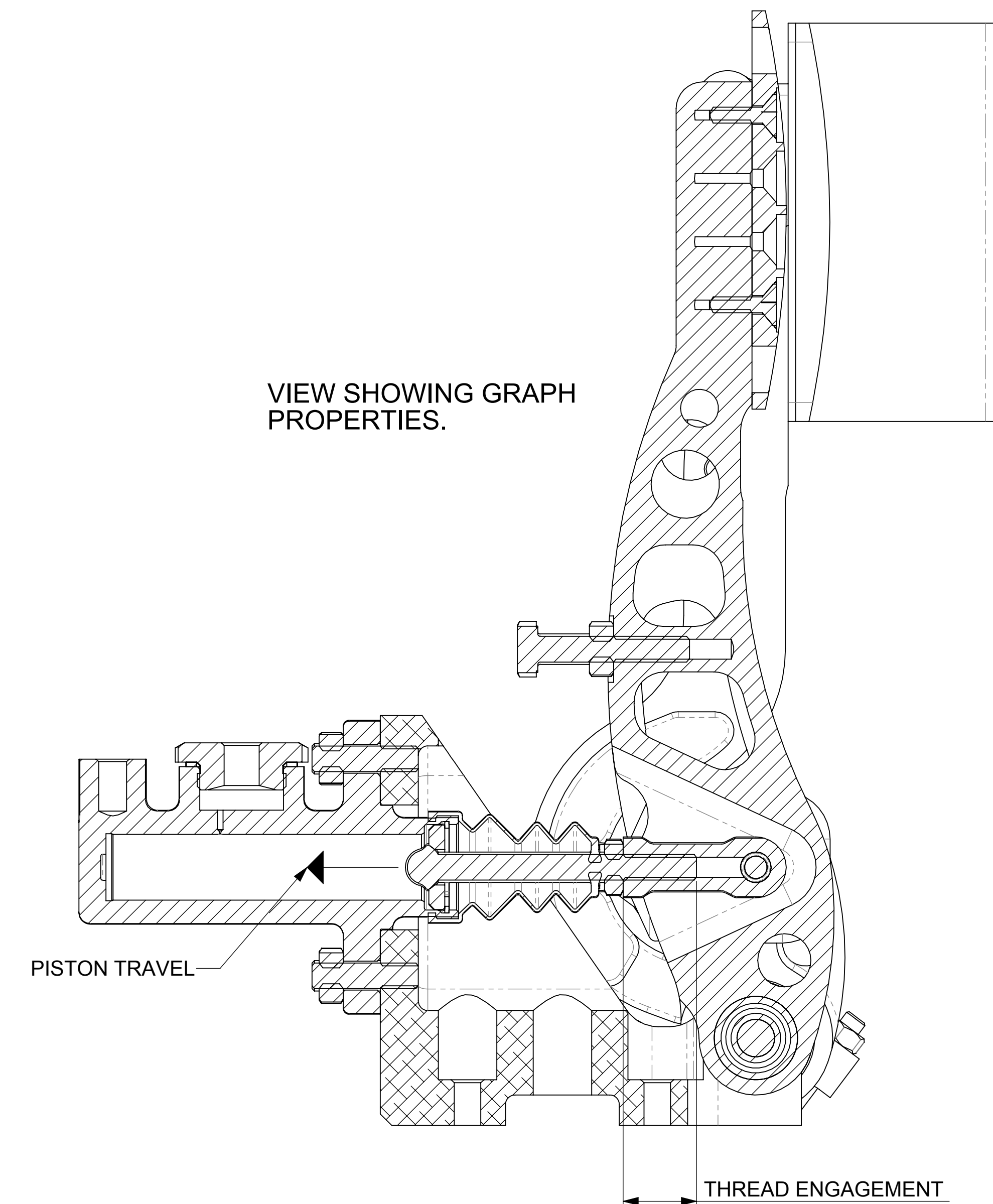
#1 M13
CP5500316



THE ABOVE GRAPH EXPLAINS WHEN A PARTICULAR SET UP WILL REQUIRE A PEDAL MODIFICATION. A SET UP THAT ALLOWS A VALUE OF PISTON TRAVEL ABOVE THE LINE WILL REQUIRE A MODIFICATION, VALUES BELOW THE LINE WILL NOT.



VIEW SHOWING GRAPH PROPERTIES.



SCALE 1:2 SHEET 3 OF 3

DRAWN Chris Arrowsmith

APPROVED

DERIVED FROM

TITLE

DRG NO. CP5500-505CD