

A1 INSTALLATION DRAWING

IF THIS DOCUMENT IS PRINTED IN HARDCOPY, IT IS FOR INFORMATION USE ONLY AND THEREFORE IS NOT SUBJECT TO UPDATING CONTROLS. ALWAYS REFER TO SOLIDWORKS VIEWER FOR LATEST ISSUE



THIS DRAWING IS CONFIDENTIAL AND IS SUPPLIED ON THE EXPRESS CONDITION THAT IT SHALL NOT BE LOANED OR COPIED OR DISCLOSED TO ANY OTHER PERSON OR USED FOR ANY OTHER PURPOSE WITHOUT THE WRITTEN CONSENT OF AP RACING LTD.

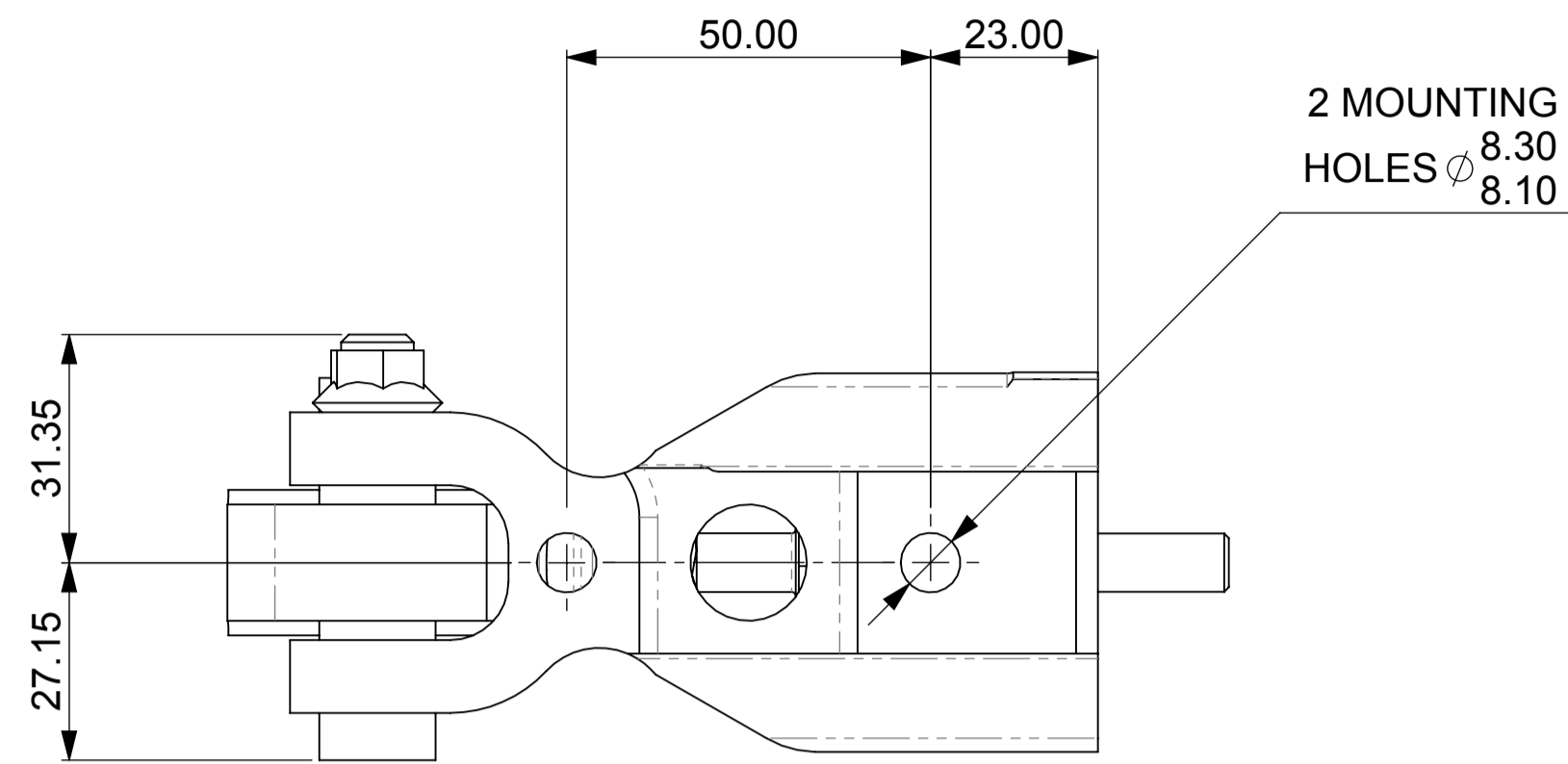


AP Racing
Wheler Road
Coventry
CV3 4LB

Tel: +44 (0) 24 7663 9595
Fax: +44 (0) 24 7663 9559
e-mail: engineering@apracing.co.uk
Web site: <http://www.apracing.com>

© AP Racing Ltd. 2005

Issue No.	Alterations		Zone	Initials
	Date & No.	Particulars		
1	09/07/2010	FIRST ISSUE	#	CDA
2	26/07/2012	SHEET 3 ADDED	#	RS



GENERAL DESCRIPTION

THIS PEDAL BOX IS A GENERIC RACING PEDAL BOX DESIGN. DESIGNED FOR COMFORT AND CONTROL. THIS UPDATED PEDAL BOX HAS A NEW OPTIMISED MACHINED FROM BILLET BASEPLATE AND PEDAL.

FEATURES

- OPTIMISED, LIGHTWEIGHT, MACHINED FROM BILLET BASE PLATE.
- OPTIMISED, LIGHTWEIGHT CLUTCH PEDAL, WITH IMPROVED TWIST DISPLACEMENT.
- ADJUSTABLE RATIO PEDALS.
- ALL THREADS ARE METRIC, EXCEPT THOSE MENTIONED BELOW.
- Ø10 BALANCE BAR
- PEDAL BOX WEIGHT IS TBA Kg (CP2623 MASTER CYLINDERS APPROX 0.31Kg EACH)
- THE PEDAL INCLUDES BALL BEARING PIVOTS.

PART NUMBER

CP5500-545MET - METRIC, PEDAL BOX WITH CLUTCH ONLY

CP5500-545UNF - IMPERIAL, PEDAL BOX WITH CLUTCH ONLY
THE ONLY THREAD THAT IS IMPERIAL IS THE CLUTCH CLEVIS THAT ATTACHES TO THE MASTER CYLINDER PUSHROD.

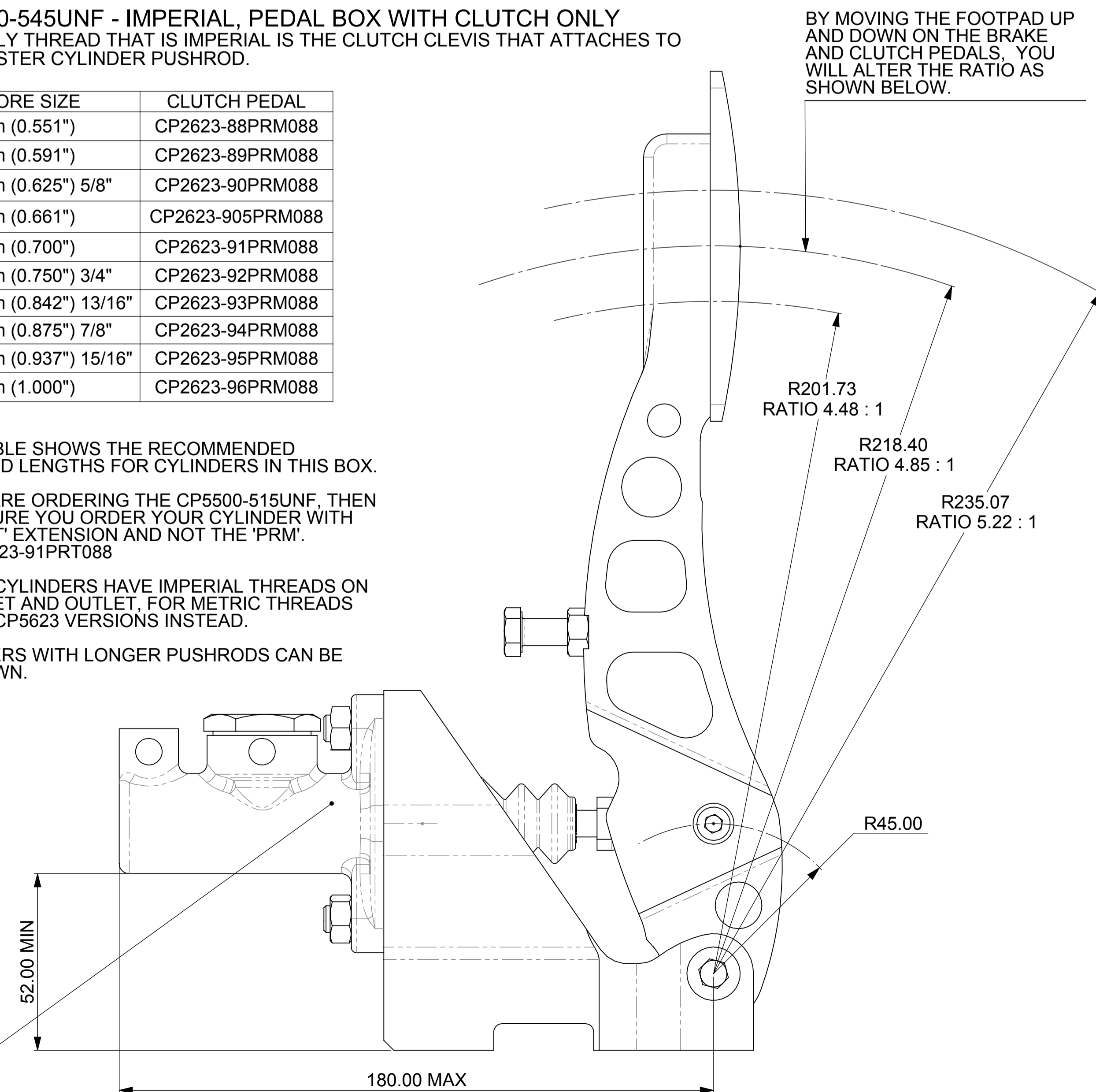
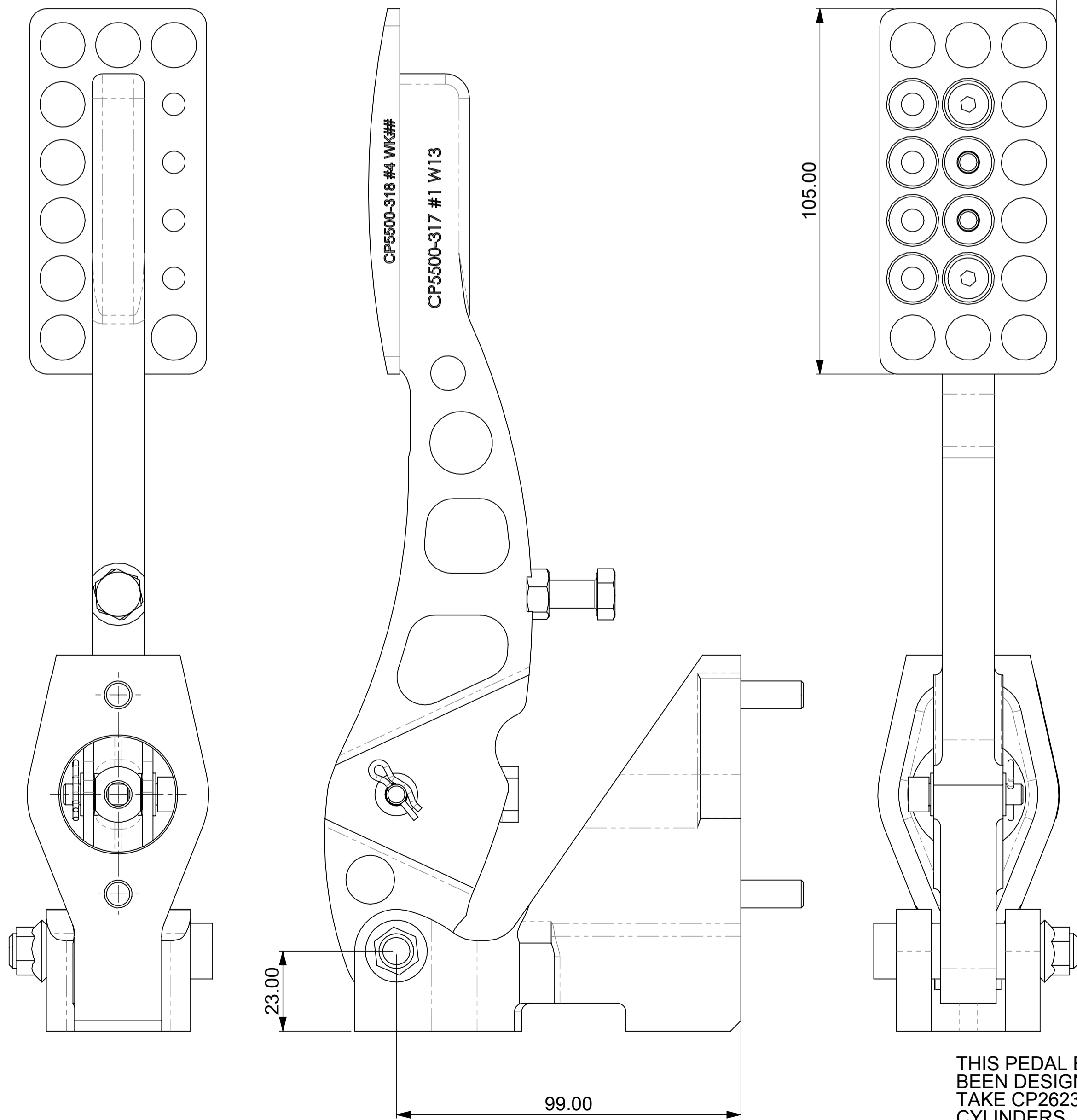
BORE SIZE	CLUTCH PEDAL
Ø14.0mm (0.551")	CP2623-88PRM088
Ø15.0mm (0.591")	CP2623-89PRM088
Ø15.9mm (0.625") 5/8"	CP2623-90PRM088
Ø16.8mm (0.661")	CP2623-905PRM088
Ø17.8mm (0.700")	CP2623-91PRM088
Ø19.1mm (0.750") 3/4"	CP2623-92PRM088
Ø20.6mm (0.842") 13/16"	CP2623-93PRM088
Ø22.2mm (0.875") 7/8"	CP2623-94PRM088
Ø23.8mm (0.937") 15/16"	CP2623-95PRM088
Ø25.4mm (1.000")	CP2623-96PRM088

THIS TABLE SHOWS THE RECOMMENDED PUSHROD LENGTHS FOR CYLINDERS IN THIS BOX.

IF YOU ARE ORDERING THE CP5500-515UNF, THEN MAKE SURE YOU ORDER YOUR CYLINDER WITH THE 'PRT' EXTENSION AND NOT THE 'PRM'. eg. CP2623-91PRT088

CP2623 CYLINDERS HAVE IMPERIAL THREADS ON THE INLET AND OUTLET. FOR METRIC THREADS ORDER CP5623 VERSIONS INSTEAD.

CYLINDERS WITH LONGER PUSHRODS CAN BE CUT DOWN.



SCALE 1:1	SHEET 1 OF 3
DRAWN	Chris Arrowsmith
APPROVED	
DERIVED FROM	
TITLE	
GENERIC FLOOR MTG PEDAL BOX	
DRG NO.	CP5500-545CD

A1 INSTALLATION DRAWING

IF THIS DOCUMENT IS PRINTED IN HARDCOPY, IT IS FOR INFORMATION USE ONLY AND THEREFORE IS NOT SUBJECT TO UPDATING CONTROLS. ALWAYS REFER TO SOLIDWORKS VIEWER FOR LATEST ISSUE



THIS DRAWING IS CONFIDENTIAL AND IS SUPPLIED ON THE EXPRESS CONDITION THAT IT SHALL NOT BE LOANED OR COPIED OR DISCLOSED TO ANY OTHER PERSON OR USED FOR ANY OTHER PURPOSE WITHOUT THE WRITTEN CONSENT OF AP RACING LTD.



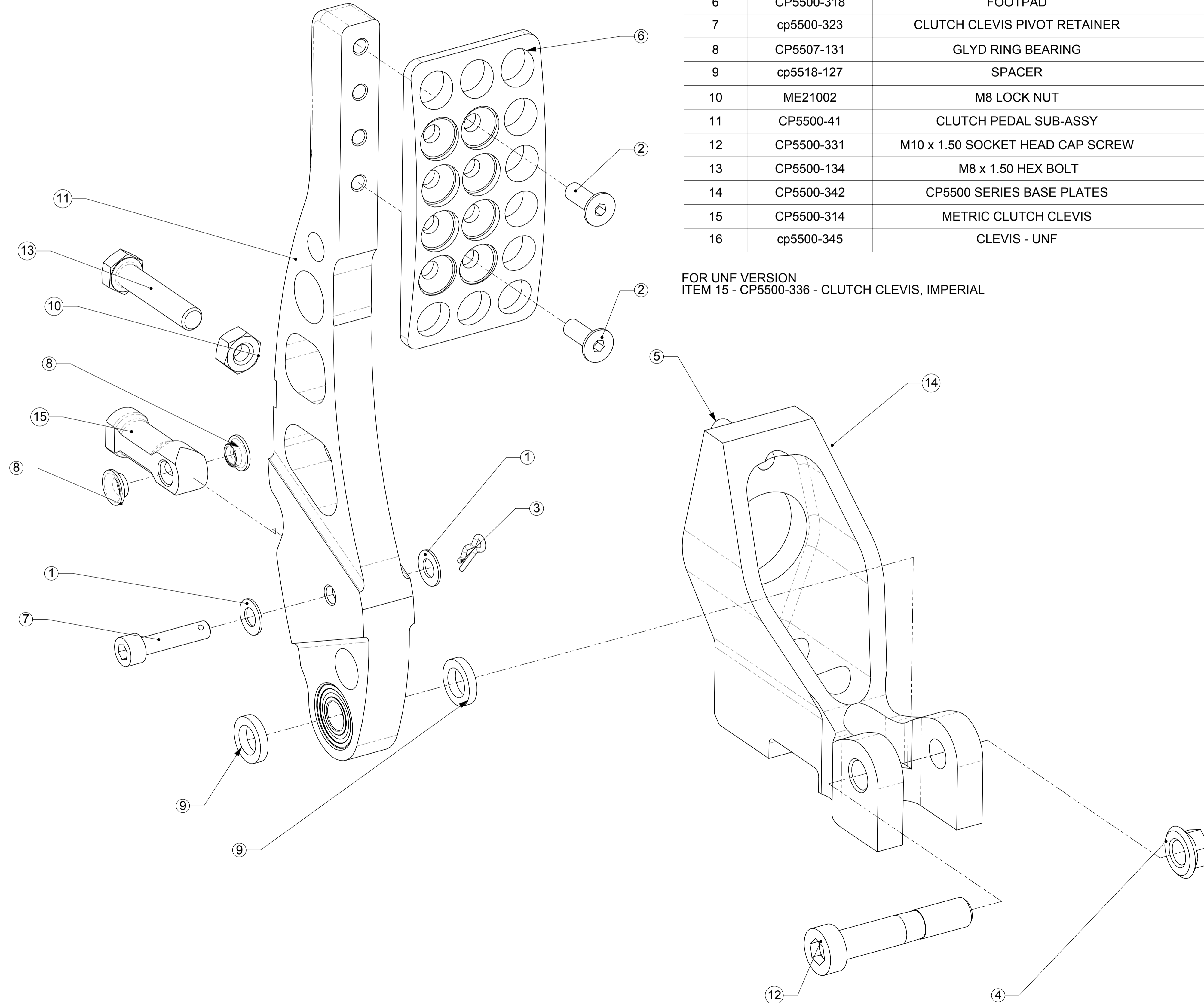
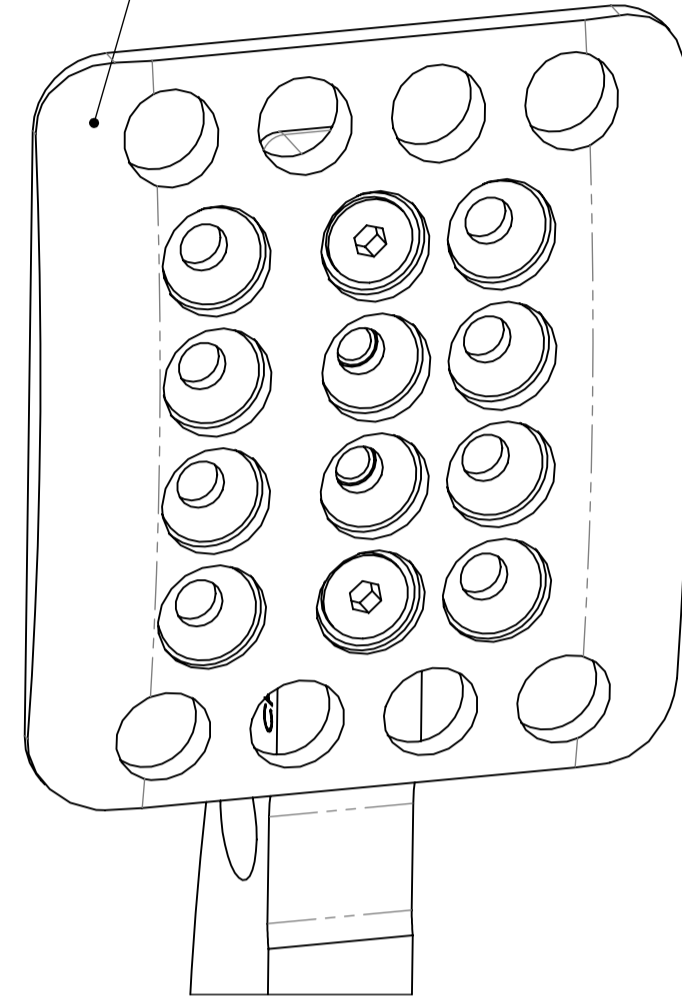
AP Racing
Wheler Road
Coventry
CV3 4LB

Tel: +44 (0) 24 7663 9595
Fax: +44 (0) 24 7663 9559
e-mail: engineering@ap racing.co.uk
Web site: <http://www.ap racing.com>

© AP Racing Ltd. 2005

OPTIONAL EXTRAS

LARGER FOOTPAD
PART NUMBER: CP5500-330
SOLD SEPARATELY



SPARES LIST

ITEM NO.	PART NUMBER	DESCRIPTION	CP5500-54/QTY.
1	CP2494-1305	WASHER	2
2	CP4350-106	M6 x 14 SCREW, COUNTERSUNK	2
3	cp5119-134	PAD RETAINING R CLIP	1
4	CP5427-101	M10 KAYLOCK NUT	1
5	cp5500-133	STUD M8x1.25, 28.0 LONG	2
6	CP5500-318	FOOTPAD	1
7	cp5500-323	CLUTCH CLEVIS PIVOT RETAINER	1
8	CP5507-131	GLYD RING BEARING	2
9	cp5518-127	SPACER	2
10	ME21002	M8 LOCK NUT	1
11	CP5500-41	CLUTCH PEDAL SUB-ASSY	1
12	CP5500-331	M10 x 1.50 SOCKET HEAD CAP SCREW	1
13	CP5500-134	M8 x 1.50 HEX BOLT	1
14	CP5500-342	CP5500 SERIES BASE PLATES	1
15	CP5500-314	METRIC CLUTCH CLEVIS	1
16	cp5500-345	CLEVIS - UNF	2

Issue No.	Alterations		Zone	Initials
	Date & No.	Particulars		
-	-	SEE SHEET 1 FOR ISSUE INFORMATION.	-	-

SCALE 1:1	SHEET 2 OF 3
DRAWN	Chris Arrowsmith
APPROVED	
DERIVED FROM	
TITLE	
GENERIC FLOOR MTG PEDAL BOX	
DRG NO.	CP5500-545CD

