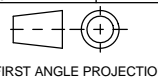


A2 INSTALLATION DRAWING

If this document is printed in hardcopy, it is for information use only and therefore is not subject to updating controls. Always refer to viewer for latest issue.



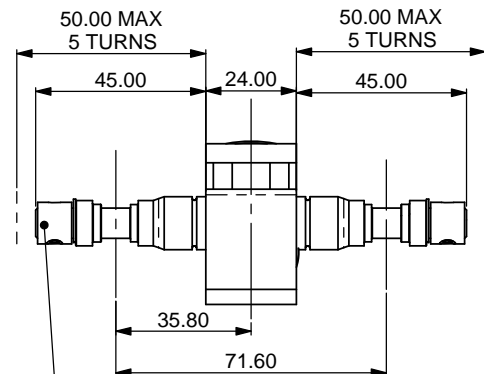
THIS DRAWING IS CONFIDENTIAL AND IS SUPPLIED ON THE EXPRESS CONDITION THAT IT SHALL NOT BE LOANED OR COPIED OR DISCLOSED TO ANY OTHER PERSON OR USED FOR ANY OTHER PURPOSE WITHOUT THE WRITTEN CONSENT OF AP RACING LTD.



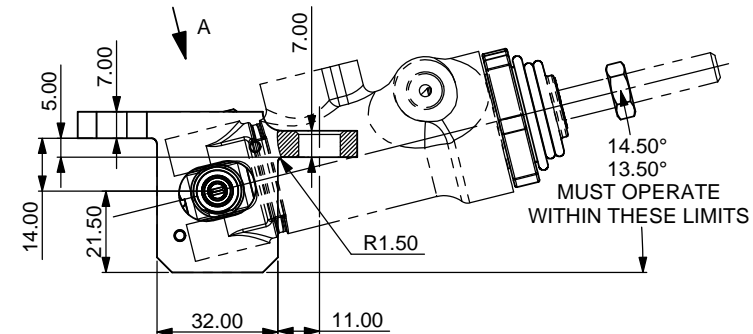
© AP Racing Ltd. 2004
 AP Racing
 Wheler Road
 Coventry
 CV3 4LB

Tel: +44 024 7663 9595 e-mail: sales@ap racing.co.uk
 Fax: +44 024 7663 9559 Web site: HTTP://www.ap racing.com

Issue No.	Date & No.	Alterations	
		Particulars	Zone Initials
1	28/04/2004 B3941	FIRST ISSUE	# CDA
2	02/11/04 B4103	RUBBER BOOTS & ASSOCIATED FIXINGS ADDED	JH
3	30/11/04 B4096	RUBBER BOOTS NUMBERS CORRECTED.	CDA
4	11/02/05 B4169	SPARE PARTS CHART REPLACES SEPARATE ITEMS LIST ASSEMBLY NOTES AND EXPLODED VIEW BALLOON NUMBERS MODIFIED TO SUIT. CORRECTION: 50.0 MAX WAS 49.5 AND 45.0 WAS 44.5	DRA H1 H2
5	16/10/2008	BALANCE BAR AND EXTRAS UPDATED.	CDA



Ø 4.0 HOLE FOR CABLE ADJUSTOR.
 2OFF M4x0.7 GRUB SCREW (3C) TO RETAIN CABLE (INCLUDED).
 AP RACING CABLE ADJUSTOR - CP2905-18.
 AND STEPPER MOTOR KIT - CP5500-14.
 AVAILABLE FROM AP RACING.

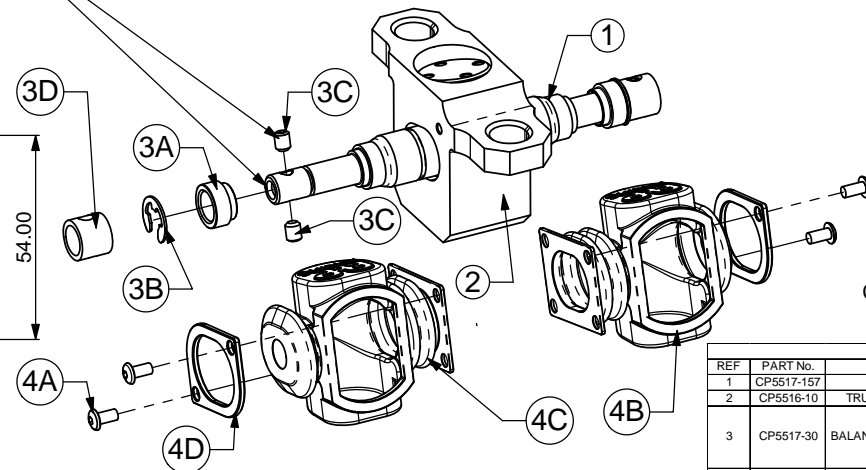
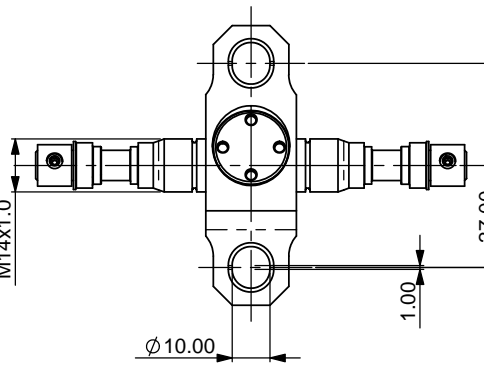


GENERAL DESCRIPTION:-
 THIS SMALL AND COMPACT BALANCE BAR USES NEEDLE ROLLER BEARINGS, TO PROVIDE LOW HYSTERESIS AND HIGH EFFICIENCY. THIS SPECIFIC VERSION IS DESIGNED TO FIT AT THE FIXED END OF AN ARRANGMENT AND DESIGNED TO WORK WITH OUR HIGH EFFICIENCY CP6465 MASTER CYLINDERS, AS SHOWN. SEE OUR RECOMMENDED LIMITS ON BALANCE BAR ADJUSTMENT.

PART NUMBERS

CP5516-15 - BALANCE BAR AS SHOWN.

SPARE PARTS, SUB-ASSEMBLIES OR KITS					
REF	PART No.	DESCRIPTION	REF	DESCRIPTION	QTY
1	CP5517-157	BALANCE BAR	-	-	1
2	CP5516-10	TRUNNION SUB-ASSY	-	-	1
3	CP5517-30	BALANCE BAR EXTRAS KIT	3A	BALANCE BAR SPACER	2
			3B	CIRCLIP	2
			3C	M4 GRUB SCREW	4
			3D	SLEEVE	2
4	CP5516-20	BALANCE BAR BOOT KIT	4A	M3 SCREW	4
			4B	RUBBER BOOT	1
			4C	RUBBER BOOT (WITH HOLE)	1
			4D	CLAMP PLATE	2



BALANCE BAR ASSEMBLY INSTALLATION

A. FITTING THE BALANCE BAR.

PLEASE MAKE SURE THE CYLINDER ANGLE IS CORRECT TO THE BALANCE BAR, OTHERWISE IT WILL FAIL TO OPERATE PROPERLY. THIS MEANS THE BALANCE HAS TO BE FITTED AT THE FIXED END.

B. FITTING THE MASTER CYLINDER CLEVIS TO THE BALANCE BAR

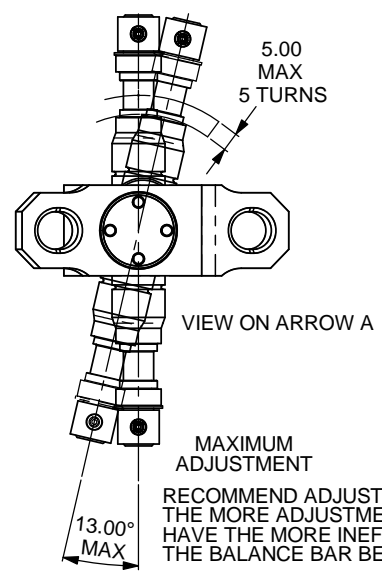
1. INSTALL BALANCE BAR (1) INSIDE THE CENTRAL TRUNNION SUB-ASSY (2)
2. PLACE MASTER CYLINDER CLEVIS ON TO BALANCE BAR (1).
3. PUSH THE WASHER (3A) ON THE BALANCE BAR (1).
4. PUSH CIRCLIP (3B) INTO PLACE ON BALANCE BAR (1) TO HOLD MASTER CYLINDER CLEVIS IN PLACE. CYLINDER SHOULD BE ABLE TO ROATE ON THE BALANCE BAR.

C. SETTING UP THE BALANCE BAR

1. INSTALL REMOTE CABLE AND RETAINING SCREWS (3C)
2. ADJUST THE CYLINDER PULLRODS SO THAT THEY ARE PERPENDICULAR TO THE BALANCE BAR UNDER MAXIMUM LOAD. IT IS MORE EFFICIENT WHEN PERPENDICULAR. IT IS NOT IMPORTANT TO BE PERPENDICULAR WHEN RELEASED.

FOR MAXIMUM EFFICIENCY, IT IS RECOMMENDED THAT THE PEDAL IS AT RIGHT ANGLE WITH THE PUSHRODS UNDER MAXIMUM BRAKING LOAD; AND ALSO KEEPING THE BALANCE BAR CENTRAL WITH BETTER SELECTION OF MASTER CYLINDER SIZES HELPS REDUCE INEFFICIENCIES.

ALSO MAKE SURE THAT THE MASTER-CYLINDER PISTONS FULLY RETURN BEFORE USE.



SCALE 1:1	SHEET 1 OF 1
DRAWN	CHRIS ARROWSMITH
APPROVED	
DERIVED FROM	
TITLE HIGH EFFICIENCY BALANCE BAR INSTALLATION DRAWING	
DRG NO.	CP5516-15CD