

B1 INSTALLATION DRAWING

IF THIS DOCUMENT IS PRINTED IN HARDCOPY, IT IS FOR INFORMATION USE ONLY AND THEREFORE IS NOT SUBJECT TO UPDATING CONTROLS. ALWAYS REFER TO SOLIDWORKS VIEWER FOR LATEST ISSUE

FIRST ANGLE PROJECTION

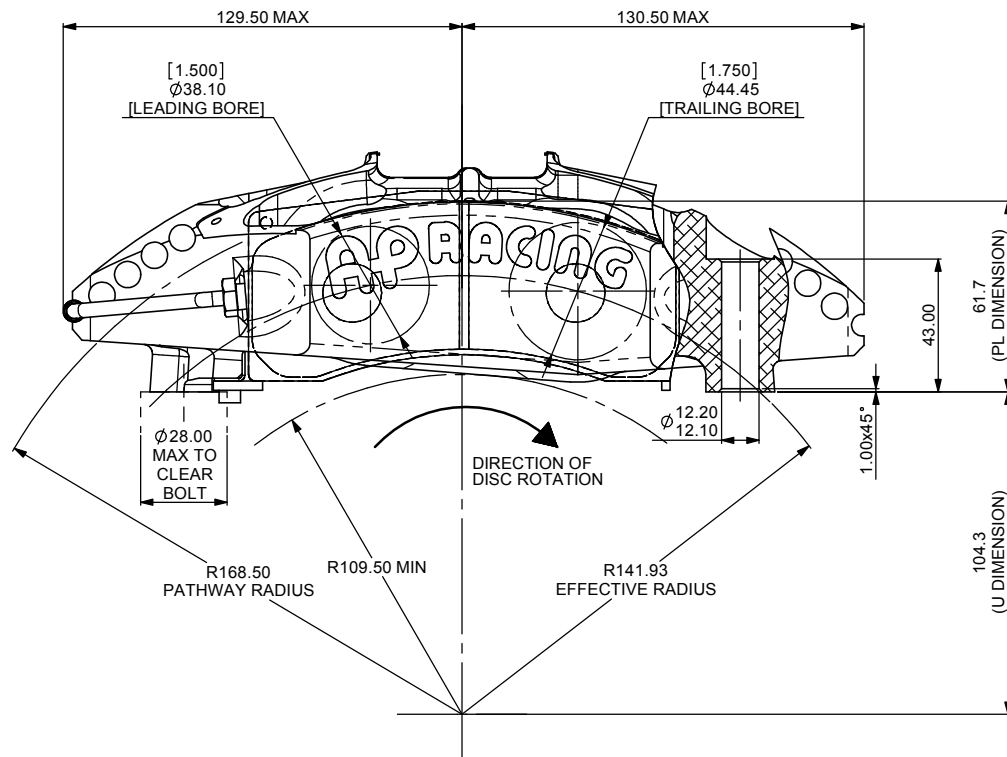
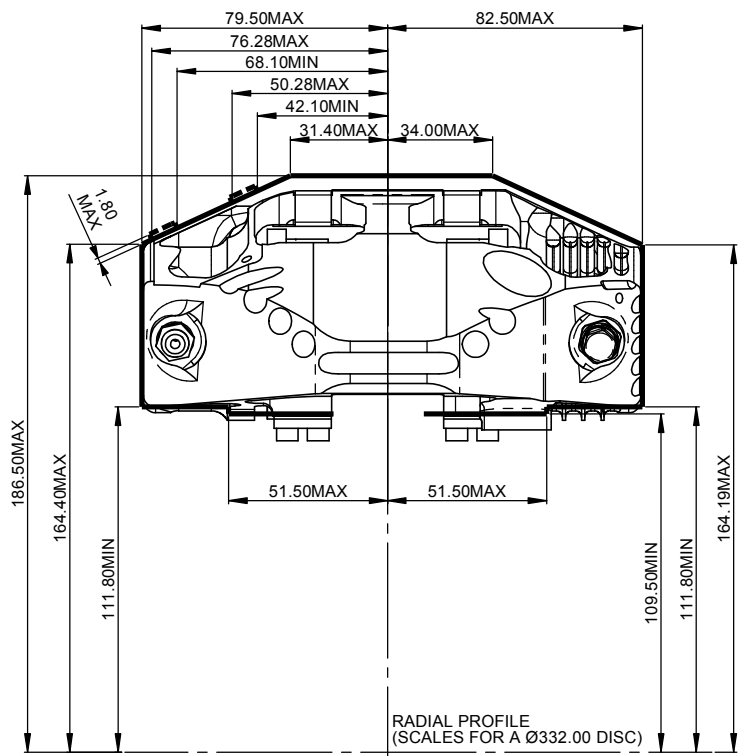
THIS DRAWING IS CONFIDENTIAL AND IS SUPPLIED ON THE EXPRESS CONDITION THAT IT SHALL NOT BE LOANED OR COPIED OR DISCLOSED TO ANY OTHER PERSON OR USED FOR ANY OTHER PURPOSE WITHOUT THE WRITTEN CONSENT OF AP RACING LTD.



AP Racing
Wheler Road
Coventry
CV3 4LB

Tel: +44 024 7663 9595
Fax: +44 024 7663 9559
e-mail: sales@apracing.co.uk
Web site: HTTP://www.apracing.com

© AP Racing Ltd. 2005



GENERAL DESCRIPTION

4 PISTON DIFFERENTIAL BORE CALIPER DESIGNED TO OPERATE ON A VENTILATED IRON DISC OF 332.0 (13.07") DIAM x 32.0 (1.28") WIDE. HIGH TEMPERATURE SEALS ARE FITTED IN THE BORES, ALONG WITH STAINLESS STEEL BRIDGE PIPE AND WEAR PLATES. THE CALIPER HAS AN INTEGRAL PAD RETAINER. THE CALIPER ALSO INCORPORATES AIR POCKETS SO YOU CAN CHANNEL COOL AIR TO WHERE IT MATTERS.

APPLICATION

WTC FRONT

TECHNICAL INFORMATION

TOTAL PISTON AREA: 53.84cm²
PISTON MATERIAL: OPTIONS ARE 'L' STAINLESS STEEL OR 'M' TITANIUM, PLEASE SPECIFY IN THE PART NUMBER, SEE BELOW.
BODY MATERIAL: ALUMINIUM ALLOY
ASSEMBLY WEIGHT: 1.96kg (4.3lbs) TITANIUM PISTONS
2.13kg (4.7lbs) STAINLESS PISTONS

INSTALLATION INFORMATION

DISC & CALIPER MOUNTING TOLERANCES TO BE SUCH THAT THE DISC IS CENTRAL TO THE CALIPER TO WITHIN ±0.5mm. DISC DIAMETRAL CLEARANCE SHOULD BE 2.5mm NOMINAL FROM DISC O/D TO PATHWAY.

KEY TO DIMENSIONS

'PL' DIMN: TOP OF PAD MATERIAL TO MOUNTING BOSS FACE, WITH PAD SITTING DOWN ON LEDGE.
'U' DIMN: WHEEL CENTRE LINE TO CALIPER MOUNTING BOSS FACE = (DISC Ø/2) - PL DIMN

CALIPER PART NUMBERS:

- CP5779-2S0 [L or M] [P or C] - RIGHT HAND TRAILING (BEHIND AXLE)
- CP5779-3S0 [L or M] [P or C] - LEFT HAND TRAILING (BEHIND AXLE)
- CP5779-4S0 [L or M] [P or C] - RIGHT HAND LEADING (IN FRONT OF AXLE)
- CP5779-5S0 [L or M] [P or C] - LEFT HAND LEADING (IN FRONT OF AXLE)

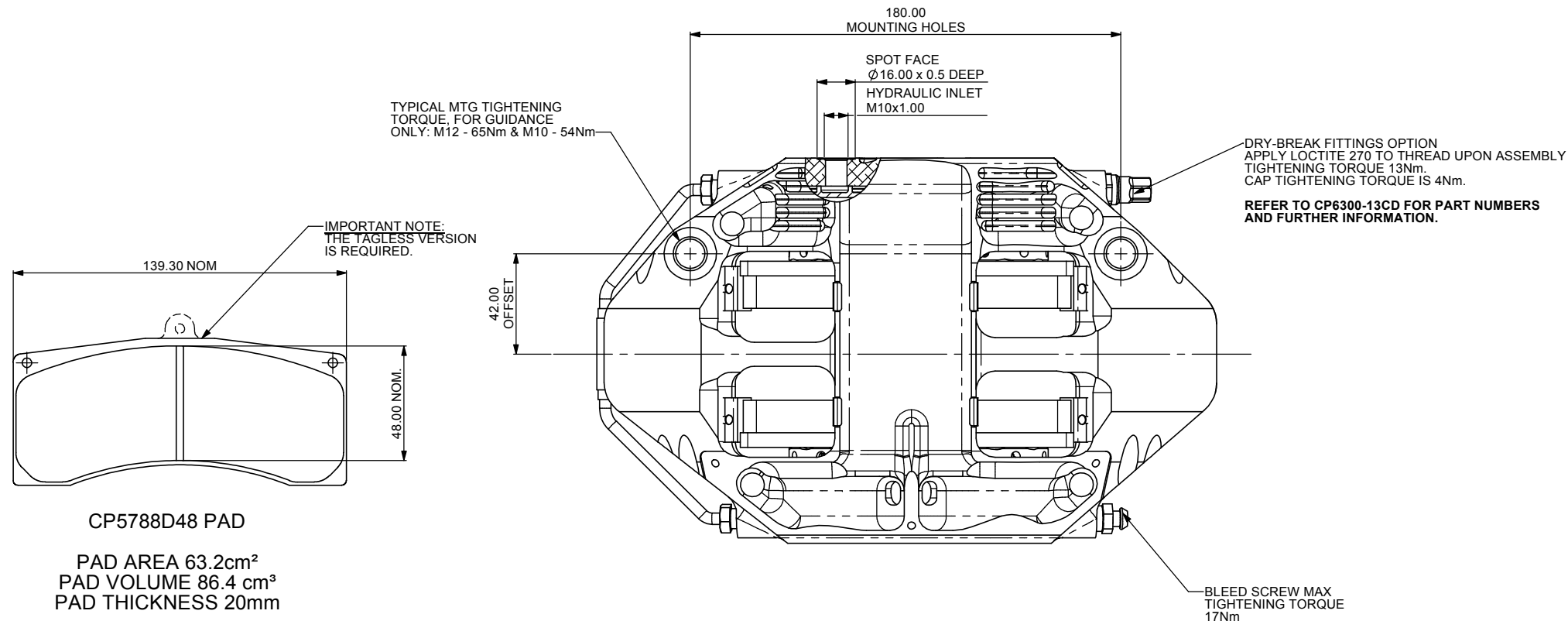
ASSEMBLY PART NO'S INCLUDING SUFFIX 'P' DENOTES CALIPER WITH "CLIP IN TYPE" PISTONS FOR ADDITION OF CLIP IN INSULATING CAPS, BUT NO CAPS FITTED.

ASSEMBLY PART NO'S INCLUDING SUFFIX 'C' DENOTES CALIPER WITH 1.5MM THICK CERAMIC PISTON CAPS FITTED. SEE SHEET 3 FOR DETAILS ON PART NUMBER.

eg. CP5779-2S0MP

FOR DUCTING INFORMATION SEE SHEET 2

FOR CALIPER SPARES INFORMATION SEE SHEET 3



CP5788D48 PAD

PAD AREA 63.2cm²
PAD VOLUME 86.4 cm³
PAD THICKNESS 20mm

Issue No	Date & No.	Alterations	Zone	Initials
1	06/08/2007 B4801	FIRST ISSUE	#	CDA
2	06/11/2007 B5018	NOTE ADDED ABOUT TAGLESS PAD TO BE REQUIRED. CALIPER PAD RETAINING BRIDGE NOW A SINGLE AIR COOLING CHANNEL NOT A TWIN CHANNEL. WEIGHTS UPDATED. SH2 - DUCT EXAMPLE UPDATED. SH3 - SPARES UPDATED.	#	CDA
3	17/01/2008	ADDITIONAL DUCTING HOLES ADDED AND DIMENSIONED.	#	CDA

SCALE 1:1	SHEET 1 OF 3
DRAWN	Chris Arrowsmith
APPROVED	
DERIVED FROM	
TITLE	
WTC CALIPER, 4 POT, 1.75 / 1.50	
DRG NO.	CP5779-1CD

B1 INSTALLATION DRAWING

IF THIS DOCUMENT IS PRINTED IN HARDCOPY, IT IS FOR INFORMATION USE ONLY AND THEREFORE IS NOT SUBJECT TO UPDATING CONTROLS. ALWAYS REFER TO SOLIDWORKS VIEWER FOR LATEST ISSUE

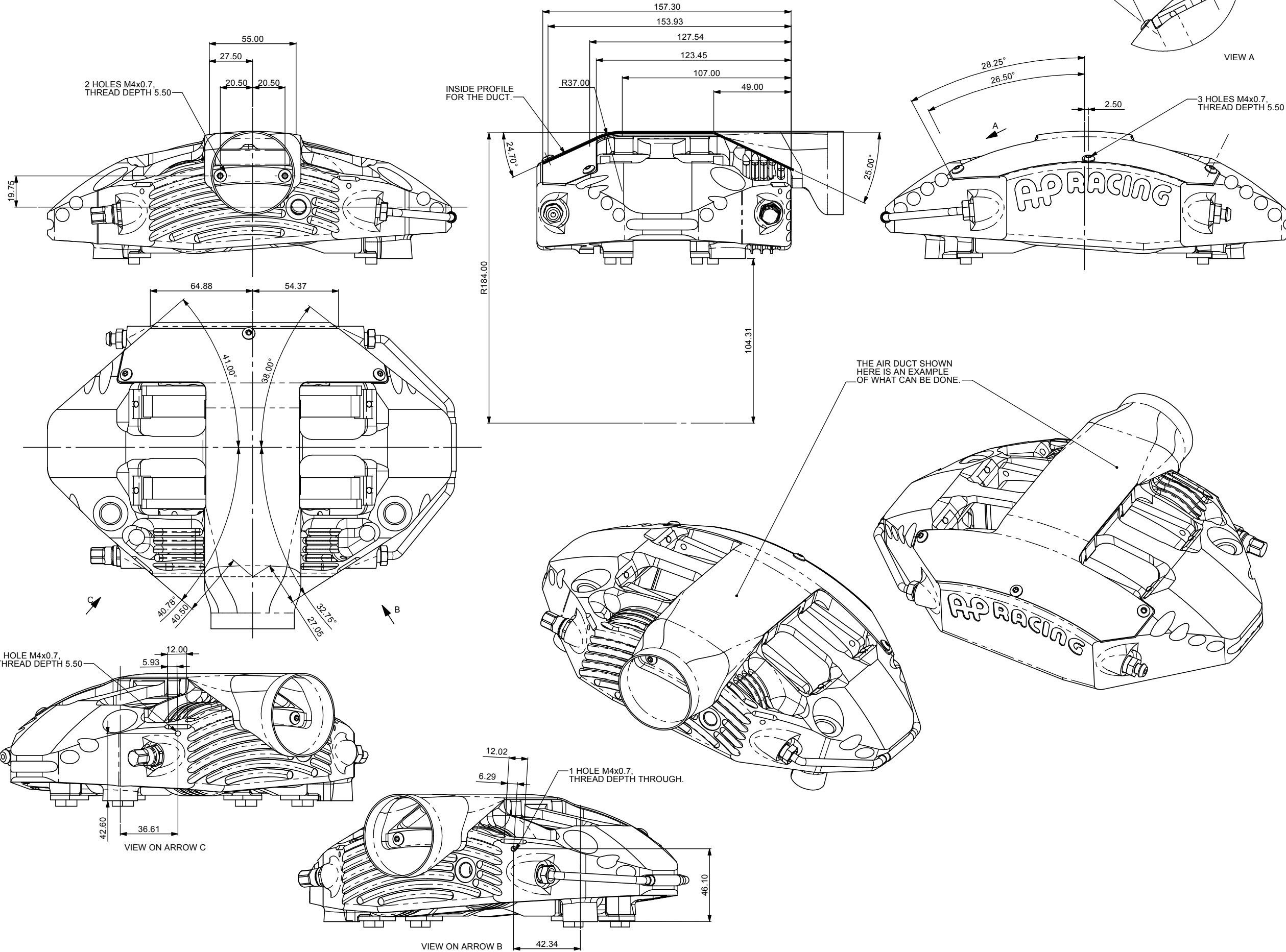
FIRST ANGLE PROJECTION

THIS DRAWING IS CONFIDENTIAL AND IS SUPPLIED ON THE EXPRESS CONDITION THAT IT SHALL NOT BE LOANED OR COPIED OR DISCLOSED TO ANY OTHER PERSON OR USED FOR ANY OTHER PURPOSE WITHOUT THE WRITTEN CONSENT OF AP RACING LTD.



AP Racing
Wheler Road
Coventry
CV3 4LB
Tel: +44 024 7663 9595
Fax: +44 024 7663 9559
e-mail: sales@ap racing.co.uk
Web site: HTTP://www.ap racing.com

DUCTING INFORMATION



Alterations		Zone	Initials
Issue No.	Date & No.	Particulars	
-	-	SEE SHEET 1 FOR ISSUE INFORMATION.	-

SCALE 1:1	SHEET 1 OF 3
DRAWN	Chris Arrowsmith
APPROVED	
DERIVED FROM	
TITLE	WTC CALIPER, 4 POT, 1.75 / 1.50
DRG NO.	CP5779-1CD

B1 INSTALLATION DRAWING

IF THIS DOCUMENT IS PRINTED IN HARDCOPY, IT IS FOR INFORMATION USE ONLY AND THEREFORE IS NOT SUBJECT TO UPDATING CONTROLS. ALWAYS REFER TO SOLIDWORKS VIEWER FOR LATEST ISSUE

FIRST ANGLE PROJECTION

THIS DRAWING IS CONFIDENTIAL AND IS SUPPLIED ON THE EXPRESS CONDITION THAT IT SHALL NOT BE LOANED OR COPIED OR DISCLOSED TO ANY OTHER PERSON OR USED FOR ANY OTHER PURPOSE WITHOUT THE WRITTEN CONSENT OF AP RACING LTD.



AP Racing
Wheler Road
Coventry
CV3 4LB

Tel: +44 024 7663 9595
Fax: +44 024 7663 9559

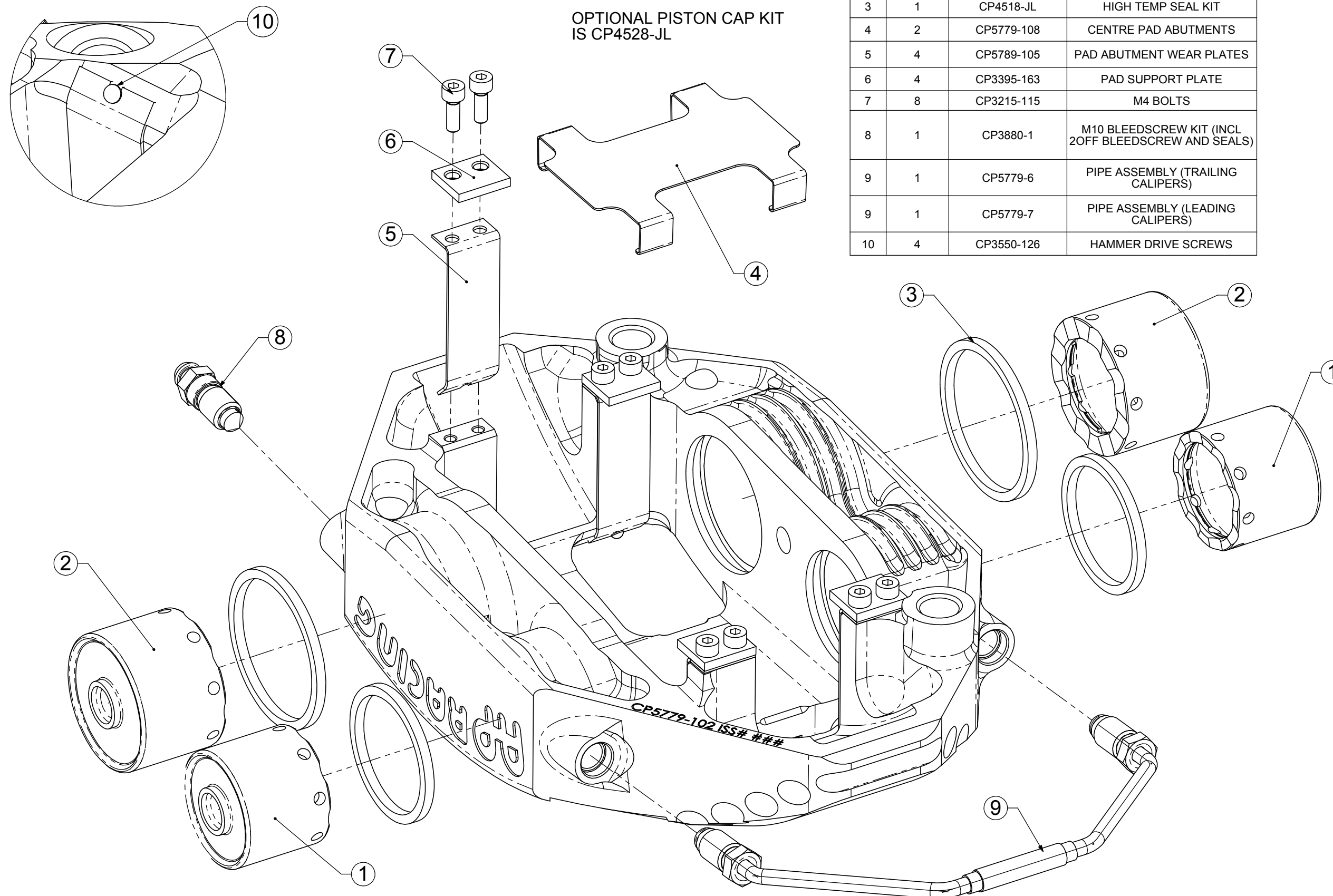
e-mail: sales@apracings.co.uk
Web site: HTTP://www.apracings.com

© AP Racing Ltd. 2005

CALIPER SPARES INFORMATION

REF.	QTY / CALIPER	PART NUMBER	DESCRIPTION
1	2	CP5990-106	1.75" PISTON, STAINLESS STEEL
1	2	CP5789-106	1.75" PISTON, TITANIUM
2	2	CP5990-107	1.50" PISTON, STAINLESS STEEL
2	2	CP5789-107	1.50" PISTON, TITANIUM
3	1	CP4518-JL	HIGH TEMP SEAL KIT
4	2	CP5779-108	CENTRE PAD ABUTMENTS
5	4	CP5789-105	PAD ABUTMENT WEAR PLATES
6	4	CP3395-163	PAD SUPPORT PLATE
7	8	CP3215-115	M4 BOLTS
8	1	CP3880-1	M10 BLEEDSCREW KIT (INCL 2OFF BLEEDSCREW AND SEALS)
9	1	CP5779-6	PIPE ASSEMBLY (TRAILING CALIPERS)
9	1	CP5779-7	PIPE ASSEMBLY (LEADING CALIPERS)
10	4	CP3550-126	HAMMER DRIVE SCREWS

OPTIONAL PISTON CAP KIT IS CP4528-JL



Issue No.	Alterations		Zone	Initials
	Date & No.	Particulars		
-	-	SEE SHEET 1 FOR ISSUE INFORMATION.	-	-

SCALE 1:1	SHEET 1 OF 3
DRAWN	Chris Arrowsmith
APPROVED	
DERIVED FROM	
TITLE	WTC CALIPER 4 POT, 1.50 /1.75
DRG NO.	CP5779-1CD