

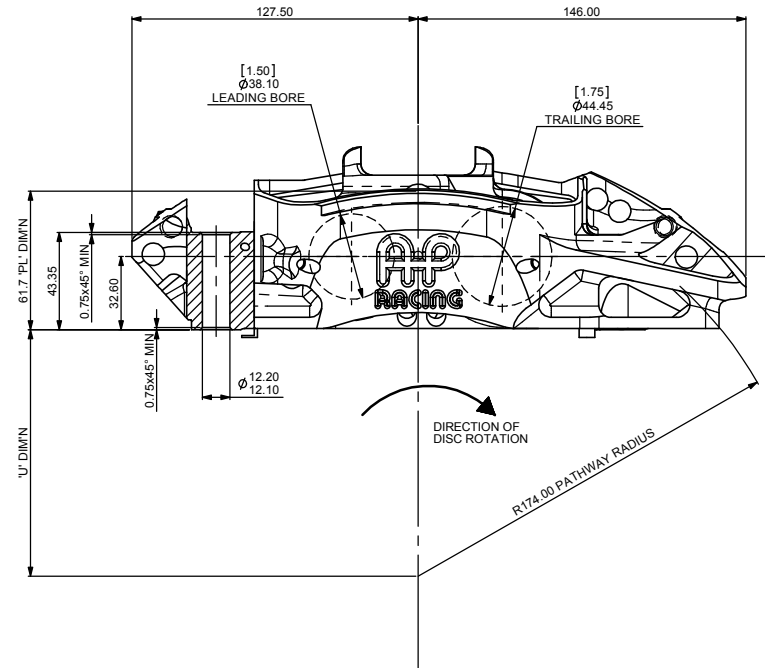
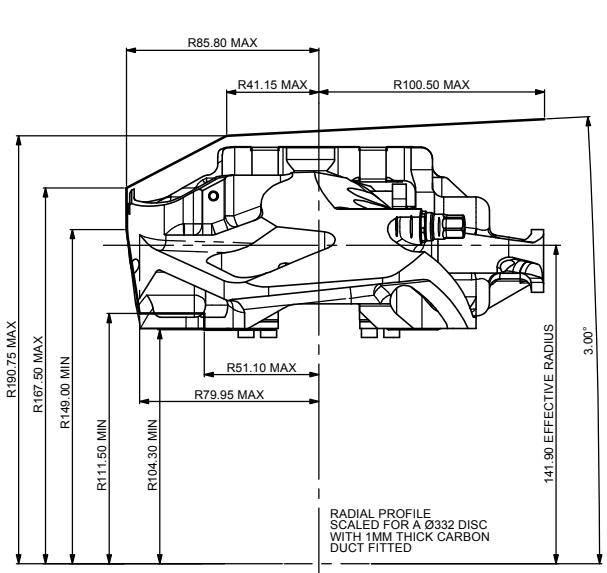
B1 INSTALLATION DRAWING

IF THIS DOCUMENT IS PRINTED IN HARD COPY, IT IS FOR INFORMATION USE ONLY AND THEREFORE IS NOT SUBJECT TO UPDATING CONTROLS. ALWAYS REFER TO SOLIDWORKS VIEWER FOR LATEST ISSUE



THIS DRAWING IS CONFIDENTIAL AND IS SUPPLIED ON THE EXPRESS CONDITION THAT IT SHALL NOT BE LOANED OR COPIED OR DISCLOSED TO ANY OTHER PERSON OR USED FOR ANY OTHER PURPOSE WITHOUT THE WRITTEN CONSENT OF AP RACING LTD.

AP RACING
 Wheler Road
 Coventry
 CV3 4LB
 Tel: +44 024 7663 9595
 Fax: +44 024 7663 9559
 e-mail: sales@apracings.co.uk
 Web site: HTTP://www.apracings.com



GENERAL DESCRIPTION
 4 PISTON DIFFERENTIAL BORE CALIPER TO SUIT UP TO 343 x 32.0 IRON DISC.

APPLICATION
 WTC FRONT

TECHNICAL INFORMATION
 TOTAL PISTON AREA: 53.84cm²
 PISTON MATERIAL: OPTIONS ARE 'L' STAINLESS STEEL OR 'M' TITANIUM. PLEASE SPECIFY IN THE PART NUMBER, SEE BELOW.
 BODY MATERIAL: ALUMINIUM ALLOY
 ASSEMBLY WEIGHT (LESS PADS): 1.94kg TITANIUM PISTONS
 2.11kg STAINLESS PISTONS

INSTALLATION INFORMATION
 DISC & CALIPER MOUNTING TOLERANCES TO BE SUCH THAT THE DISC IS CENTRAL TO THE CALIPER TO WITHIN +0.5mm. DISC DIAMETRAL CLEARANCE SHOULD BE 2.5mm NOMINAL FROM DISC O/D TO PATHWAY.

KEY TO DIMENSIONS
 'PL' DIMM : TOP OF PAD MATERIAL TO MOUNTING BOSS FACE, WITH PAD SITTING DOWN ON LEDGE.
 'U' DIMM : WHEEL CENTRE LINE TO CALIPER MOUNTING BOSS FACE = (DISC Ø/2) - PL DIMM

AP RACING TECHNICAL SECTION WILL BE PLEASED TO ADVISE ON THE MOST SUITABLE EQUIPMENT FOR ANY PARTICULAR APPLICATION.

CALIPER PART NUMBERS
 CP5780-6S0 [L or M] PD - RIGHT HAND TRAILING (BEHIND AXLE)
 CP5780-7S0 [L or M] PD - LEFT HAND TRAILING (FRONT OF AXLE)
 CP5780-8S0 [L or M] PD - RIGHT HAND LEADING (BEHIND AXLE)
 CP5780-9S0 [L or M] PD - LEFT HAND LEADING (FRONT OF AXLE)

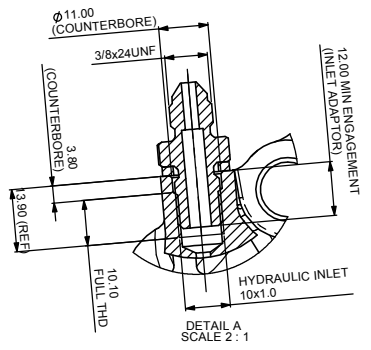
'L' SUFFIX DENOTES SST PISTONS
 'M' SUFFIX DENOTES TITANIUM PISTONS

'P' SUFFIX DENOTES CALIPER WITH 'CLIP-IN' TYPE PISTONS. FOR ADDITION OF 'CLIP-IN' PISTON CAPS SEE CP6060-1PCD DRAWING.

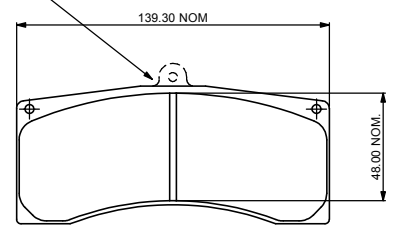
'D' SUFFIX DENOTES CARBON DUCT INCLUDED.

CP4528-JL - OPTIONAL CERAMIC COATED PISTON CAP KIT (1.5MM THICK)

NOTE: CALIPERS CAN BE USED IN A LEADING (IN FRONT OF AXLE) POSITION BY SWAPPING THE INLET ADAPTOR AND BLEED SCREW OVER.

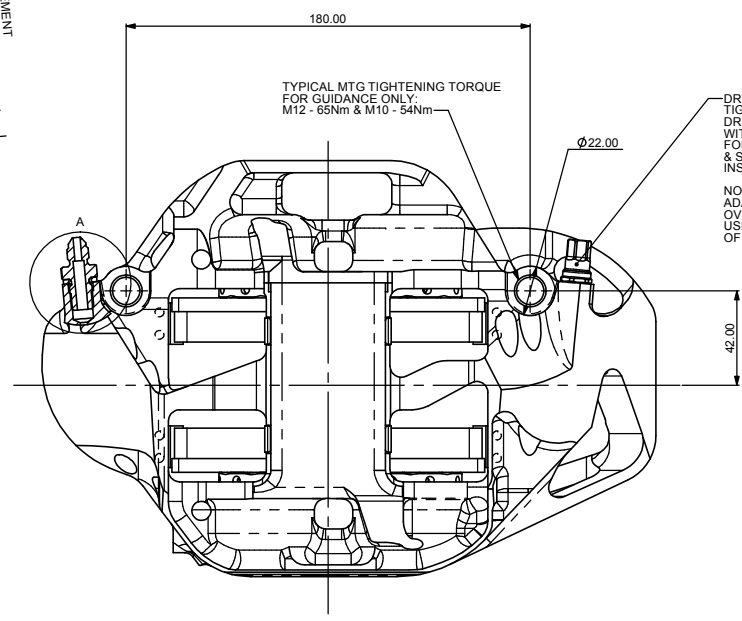


IMPORTANT NOTE:
 THE TAGLESS VERSION IS REQUIRED



CP5788D48 PAD

PAD AREA 63.2cm²
 PAD VOLUME 86.4 cm³
 PAD THICKNESS 20mm



DRY BREAK FITTING
 TIGHTENING TORQUE 13Nm
 DRY BREAK TO BE USED IN CONJUNCTION WITH CP6300-7 BLEED SYSTEM FITTING. FOR FURTHER DRY BREAK INFORMATION & SPARES REFER TO CP6300-13CD INSTALLATION DRAWING.

NOTE: DRY BREAK AND INLET ADAPTOR MUST BE SWAPPED OVER IF THE CALIPER IS BEING USED IN A LEADING (IN FRONT OF THE AXLE) POSITION.

Alterations		Zone	Initials
Date & No.	Particulars		
17/03/09 B5515	FIRST ISSUE		SAT

SCALE 1:1	SHEET 1 OF 3
DRAWN Steve Thomas	
APPROVED	
DERIVED FROM	
TITLE WTC 4-POT RADI-CAL CALIPER	
DRG NO. CP5780-6CD	

