

A1 INSTALLATION DRAWING

IF THIS DOCUMENT IS PRINTED IN HARDCOPY, IT IS FOR INFORMATION USE ONLY AND THEREFORE IS NOT SUBJECT TO UPDATING CONTROLS. ALWAYS REFER TO SOLIDWORKS VIEWER FOR LATEST ISSUE



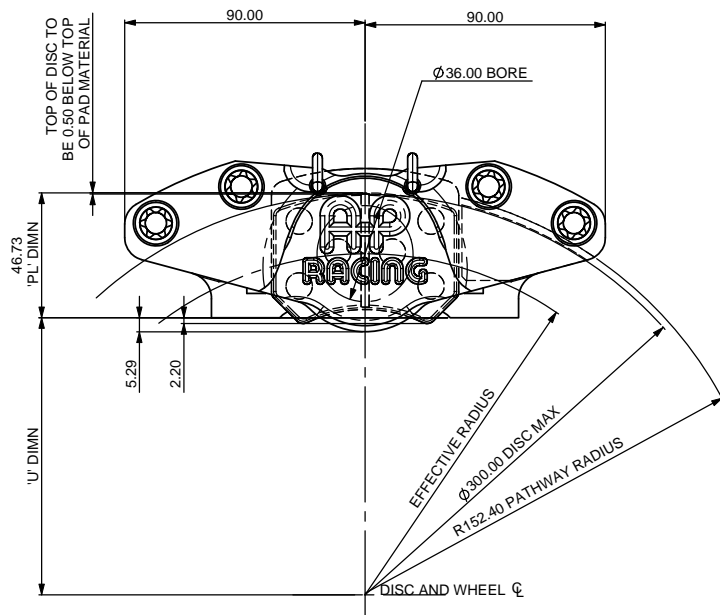
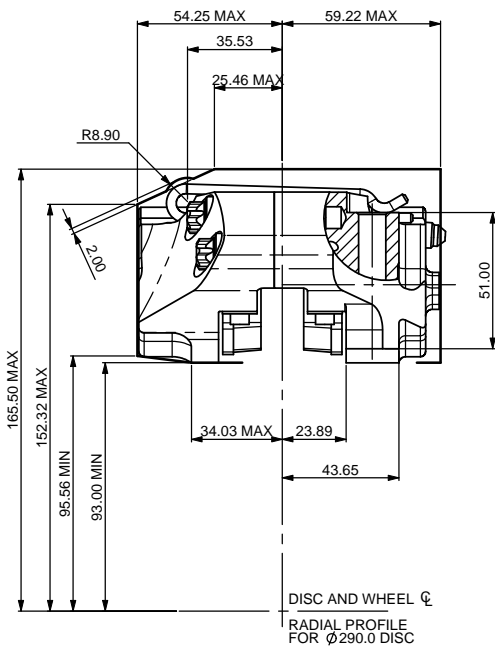
THIS DRAWING IS CONFIDENTIAL AND IS SUPPLIED ON THE EXPRESS CONDITION THAT IT SHALL NOT BE LOANED OR COPIED OR DISCLOSED TO ANY OTHER PERSON OR USED FOR ANY OTHER PURPOSE WITHOUT THE WRITTEN CONSENT OF AP RACING LTD.



AP Racing
Wheler Road
Coventry
CV3 4LB

Tel: +44 (0) 24 7663 9595
Fax: +44 (0) 24 7663 9559
e-mail: engineering@apracings.co.uk
Web site: <http://www.apracings.com>

© AP Racing Ltd. 2005



GENERAL DESCRIPTION:

THIS CALIPER IS DESIGNED TO OPERATE ON CAST IRON DISCS DIAMETER Ø300 mm MAX AND THICKNESS 16.00 mm MAX. SEALS ARE HIGH TEMPERATURE 'SEAL-IN-BORE' TYPE.

TYPICAL APPLICATION:

EUROPEAN TOURING CAR AND RALLY REAR BRAKES

TECHNICAL INFORMATION:

TOTAL PISTON AREA: 20.36 cm²
PISTON MATERIAL: ALUMINIUM ALLOY
BODY MATERIAL: ALUMINIUM ALLOY
HYDRAULIC CONNECTIONS: M10x1.00
BRAKE PADS: CP2399 FAMILY.
ASSEMBLY WEIGHT: APPROX 1.1 Kg. (WITHOUT PADS)

INSTALLATION INFORMATION

DISC & CALIPER MOUNTING TOLERANCES TO BE SUCH THAT THE DISC IS CENTRAL TO THE CALIPER TO WITHIN ±0.5 mm.
CALIPER IS HANDED BY SWITCHING POSITIONS OF BLEED SCREW AND INLET PORT.
CALIPER TO BE MOUNTED ON ITS SIDE, WITH BLEED SCREW UPPERMOST.

KEY TO DIMENSIONS:

DIMENSION 'PL': TOP OF PAD MATERIAL TO MOUNTING BOSS FACE WITH PAD SITTING DOWN ON RETAINING CLIPS.

DIMENSION 'U': WHEEL CENTRE LINE TO CALIPER MOUNTING BOSS FACE = (DISC Ø/2) - DIMENSION 'PL'.

DIMENSION 'C': OFFSET, DISC CENTRE LINE TO MOUNTING HOLES.

EFFECTIVE RAD: DISTANCE FROM WHEEL CENTRE LINE TO NOMINAL PISTON CENTRE LINE.

AP RACING TECHNICAL SECTION WILL BE PLEASED TO ADVISE ON THE MOST SUITABLE EQUIPMENT FOR ANY PARTICULAR APPLICATION.

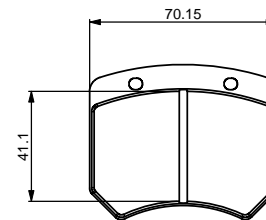
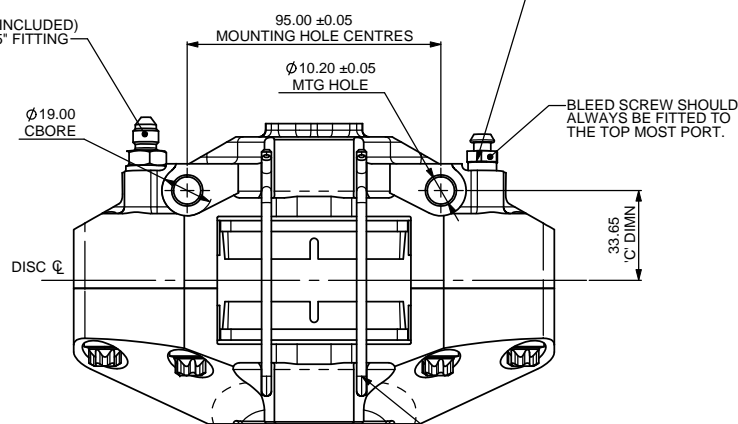
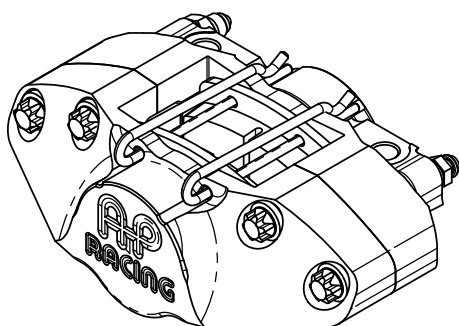
CALIPER PART NUMBER
CP5928-5E0 - NON HANDED CALIPER ASSY

REPLACEMENT SEAL KIT

SEAL KIT (HIGH TEMPERATURE) CP4518-H

BLEED SCREW MAX. TIGHTENING TORQUE
25Nm (18.5 LbFt) AT AMBIENT.
17Nm (12.5 LbFt) FOR > 100 °C BODY.

CP6160-107 (INCLUDED)
M10 to 0.375" FITTING



CP2399 PAD FAMILY

PAD AREA - SLOTTED :- 27.66 cm²
- FULL AREA :- 28.95 cm²

PAD THICKNESS :- 14.35 mm

IT IS ADVISABLE TO WIRE PAD CLIPS IN POSITON.

Issue No.		Alterations		Zone	Initials
Date & No.	Particulars				
1	25/11/2010 B6074	FIRST ISSUE		#	CDA
2	10/08/11 B6287	WEAR PLATES ADDED TO CALIPER - SEE SHEET 2		#	NS

SCALE 1:1 SHEET 1 OF 2

DRAWN Chris Arrowsmith

APPROVED

DERIVED FROM

TITLE
2 X 36.0mm BORE CALIPER

DRG NO. CP5928-5CD

A1 INSTALLATION DRAWING

IF THIS DOCUMENT IS PRINTED IN HARDCOPY, IT IS FOR INFORMATION USE ONLY AND THEREFORE IS NOT SUBJECT TO UPDATING CONTROLS. ALWAYS REFER TO SOLIDWORKS VIEWER FOR LATEST ISSUE



THIS DRAWING IS CONFIDENTIAL AND IS SUPPLIED ON THE EXPRESS CONDITION THAT IT SHALL NOT BE LOANED OR COPIED OR DISCLOSED TO ANY OTHER PERSON OR USED FOR ANY OTHER PURPOSE WITHOUT THE WRITTEN CONSENT OF AP RACING LTD.



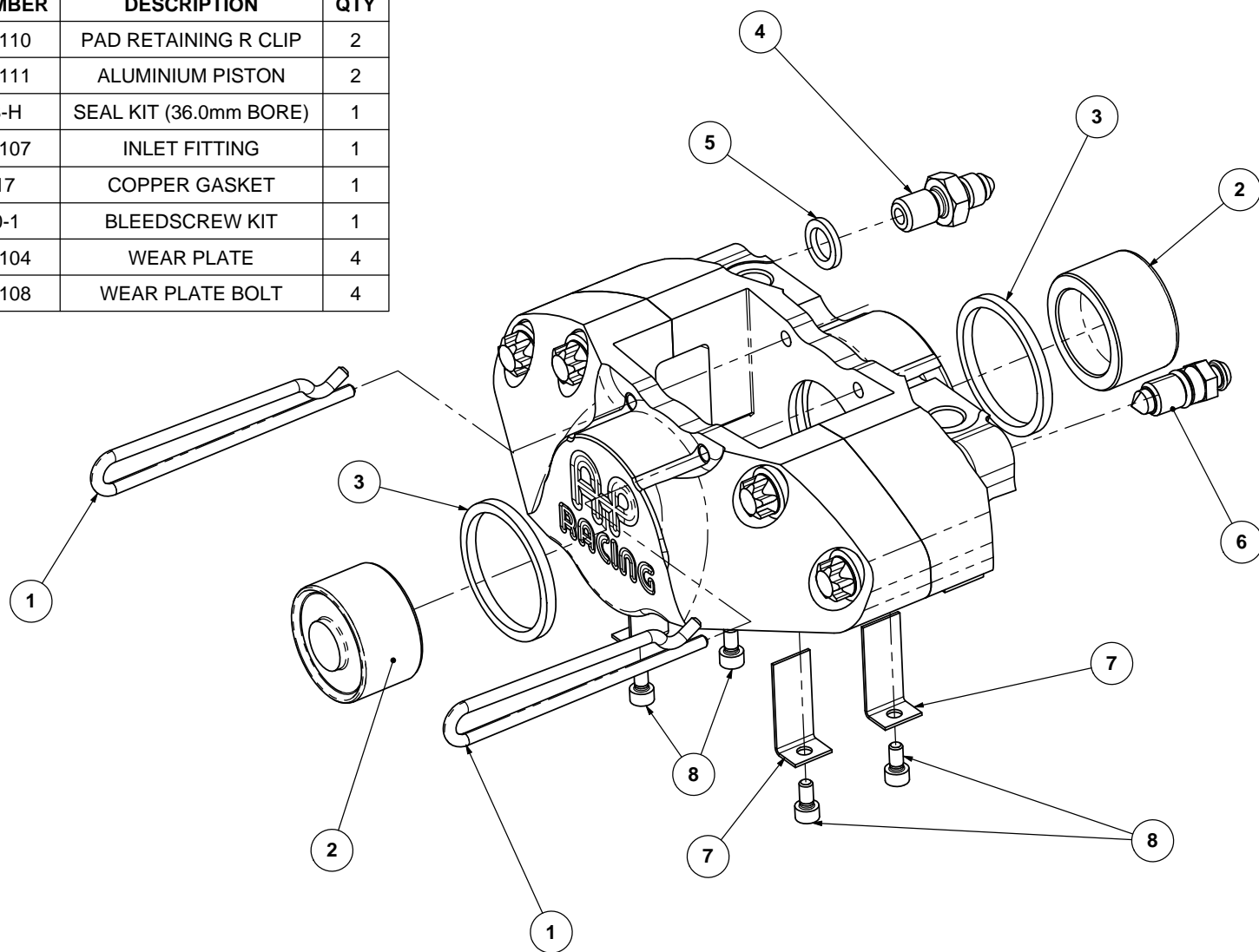
AP Racing
Wheler Road
Coventry
CV3 4LB

Tel: +44 (0) 24 7663 9595
Fax: +44 (0) 24 7663 9559
e-mail: engineering@apracings.co.uk
Web site: <http://www.apracings.com>

© AP Racing Ltd. 2005

SPARES LIST

ITEM	PART NUMBER	DESCRIPTION	QTY
1	CP4140-110	PAD RETAINING R CLIP	2
2	CP5569-111	ALUMINIUM PISTON	2
3	CP4518-H	SEAL KIT (36.0mm BORE)	1
4	CP6160-107	INLET FITTING	1
5	KL44517	COPPER GASKET	1
6	CP3880-1	BLEEDSCREW KIT	1
7	CP5586-104	WEAR PLATE	4
8	CP5166-108	WEAR PLATE BOLT	4



Issue No.	Alterations		Zone	Initials
	Date & No.	Particulars		

SCALE 1:2	SHEET 2 OF 2
DRAWN	Chris Arrowsmith
APPROVED	
DERIVED FROM	
TITLE	
DRG NO.	CP5928-5CD