

# A1 INSTALLATION DRAWING

IF THIS DOCUMENT IS PRINTED IN HARD COPY, IT IS FOR INFORMATION USE ONLY AND THEREFORE IS NOT SUBJECT TO UPDATING CONTROLS. ALWAYS REFER TO SOLIDWORKS VIEWER FOR LATEST ISSUE

FIRST ANGLE PROJECTION

THIS DRAWING IS CONFIDENTIAL AND IS SUPPLIED ON THE EXPRESS CONDITION THAT IT SHALL NOT BE LOANED OR COPIED OR DISCLOSED TO ANY OTHER PERSON OR USED FOR ANY OTHER PURPOSE WITHOUT THE WRITTEN CONSENT OF AP RACING LTD.



© AP Racing Ltd. 2002  
 AP Racing  
 Wheler Road  
 Coventry  
 CV3 4LB

Tel: +44 024 7663 9595 e-mail: sales@ap racing.co.uk  
 Fax: +44 024 7663 9559 Web site: HTTP://www.ap racing.com

Issue No.	Alterations		Zone	Initials
	Date & No.	Particulars		
1	17/08/04	FIRST ISSUE		GM

SUFFIX TO DISC PART NUMBERS:

- P PLAIN, NO GROOVES
- CGnn nn CURVED GROOVES
- CRnn nn CURVED GROOVES BREAKING THROUGH OUTSIDE DIAMETER
- RC SETS OF 3 'J HOOK' GROOVES. NUMBER OF SETS IS EQUAL TO NUMBER OF MOUNTINGS.

SEE FIGURES 1 TO 3 FOR EXAMPLES OF THE GROOVE PATTERNS AVAILABLE.

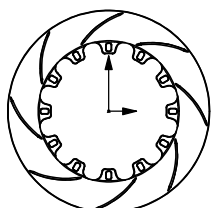


FIG. 1: CG8

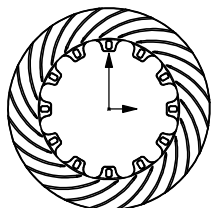


FIG. 2: CR24

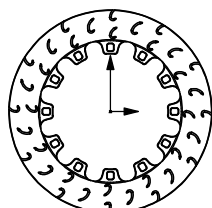
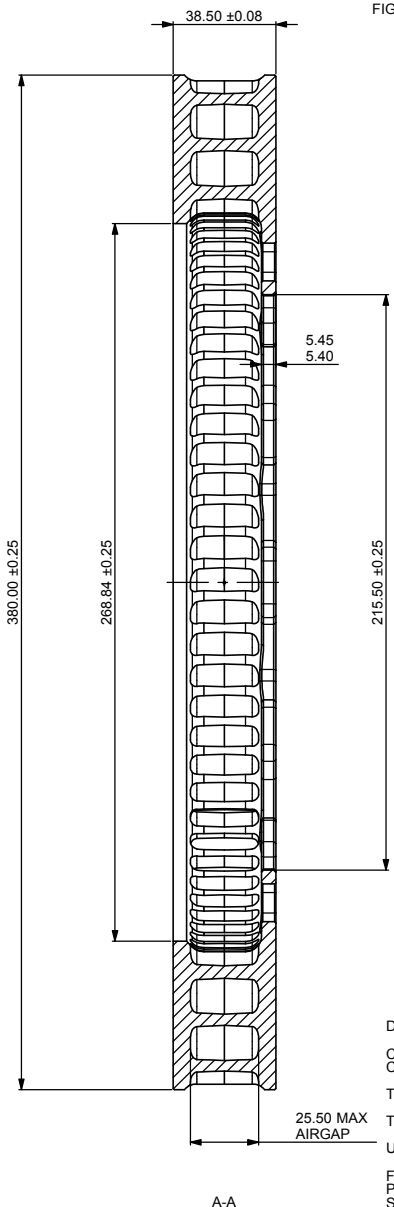
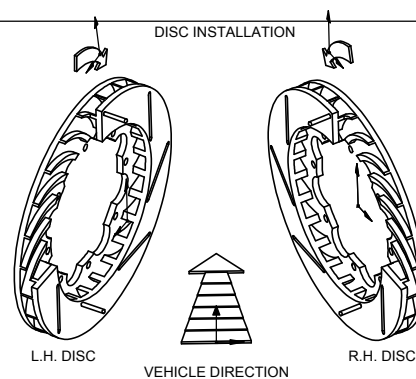
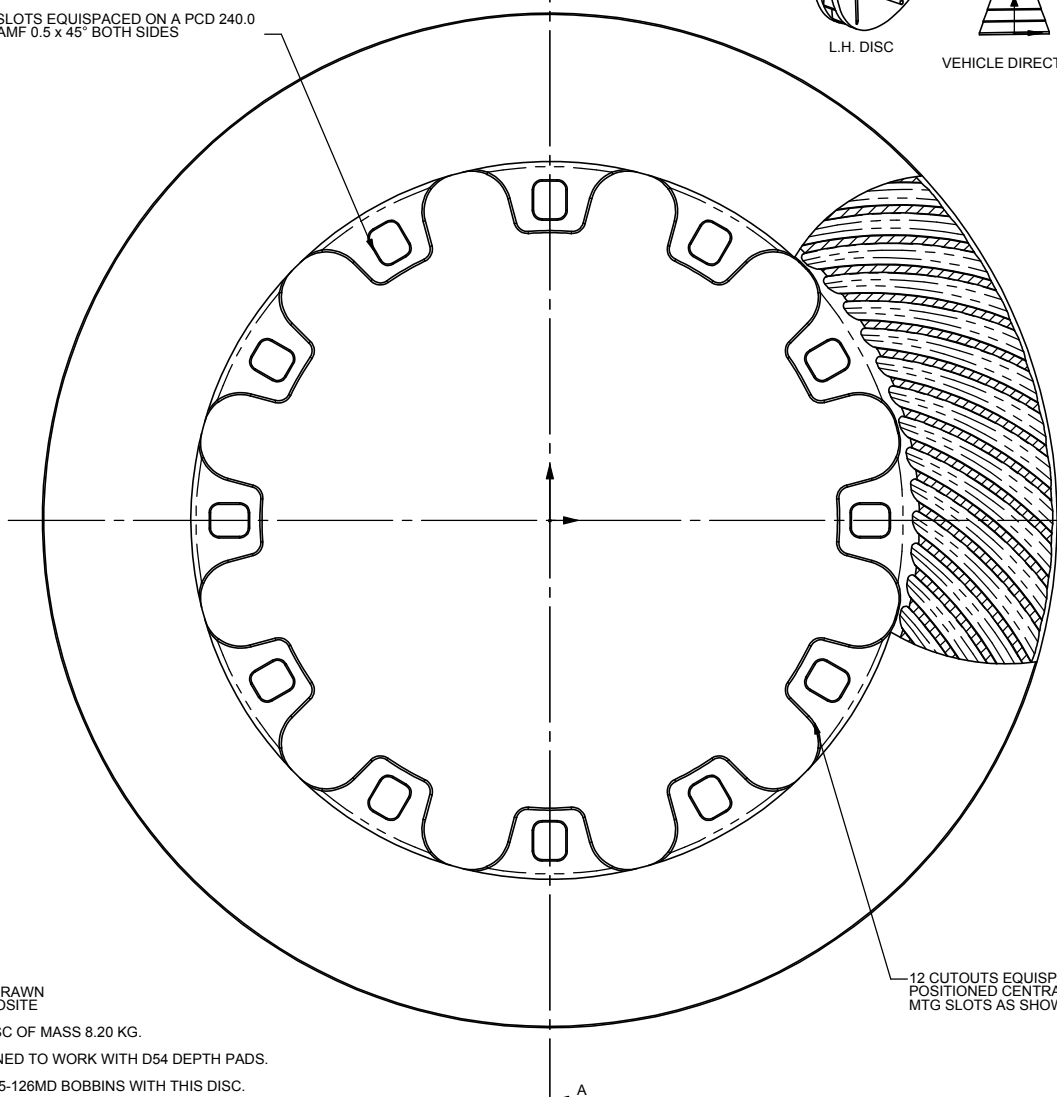


FIG. 2: RC

DISC ROTATION



12 SLOTS EQUISPACED ON A PCD 240.0  
 CHAMF 0.5 x 45° BOTH SIDES



12 CUTOUTS EQUISPACED AND POSITIONED CENTRALLY BETWEEN MTG SLOTS AS SHOWN

DISC PART NUMBERS

- CP6072-110 RH AS DRAWN
- CP6072-111 LH OPPOSITE

THIS IS A 72 VANES DISC OF MASS 8.20 KG.

THIS DISC WAS DESIGNED TO WORK WITH D54 DEPTH PADS.

USE AP RACING CP4015-126MD BOBBINS WITH THIS DISC.

FOR DISC MOUNTING TECHNIQUES, BEDDING PROCEDURE AND DISC COOLING RECOMMENDATIONS SEE AP RACING BRAKE DISC CATALOGUE.

SCALE 1:1		SHEET 1 OF 1	
DRAWN	Gael Mace		
APPROVED			
DERIVED FROM			
TITLE			
VENTILATED DISC INSTALLATION DRAWING			
DRG NO.	cp6072-110-1cd		