

# A1 INSTALLATION DRAWING

IF THIS DOCUMENT IS PRINTED IN HARDCOPY, IT IS FOR INFORMATION USE ONLY AND THEREFORE IS NOT SUBJECT TO UPDATING CONTROLS. ALWAYS REFER TO SOLIDWORKS VIEWER FOR LATEST ISSUE



THIS DRAWING IS CONFIDENTIAL AND IS SUPPLIED ON THE EXPRESS CONDITION THAT IT SHALL NOT BE LOANED OR COPIED OR DISCLOSED TO ANY OTHER PERSON OR USED FOR ANY OTHER PURPOSE WITHOUT THE WRITTEN CONSENT OF AP RACING LTD.



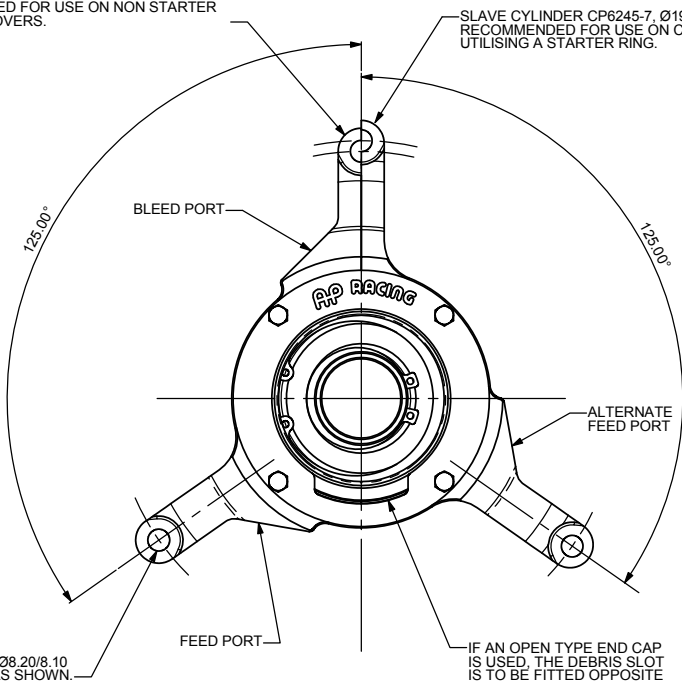
AP Racing  
Wheler Road  
Coventry  
CV3 4LB

Tel: +44 (0) 24 7663 9595  
Fax: +44 (0) 24 7663 9559  
e-mail: [engineering@apracings.co.uk](mailto:engineering@apracings.co.uk)  
Web site: <http://www.apracings.com>

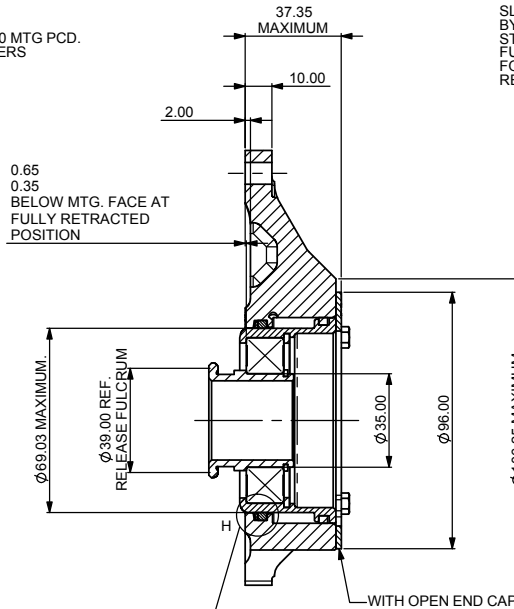
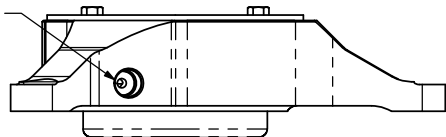
© AP Racing Ltd. 2004

SLAVE CYLINDER CP6245-8, Ø185.00 MTG PCD. RECOMMENDED FOR USE ON NON STARTER RING TYPE COVERS.

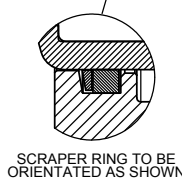
SLAVE CYLINDER CP6245-7, Ø193.00 MTG PCD. RECOMMENDED FOR USE ON COVERS UTILISING A STARTER RING.



BOTH SEATED AND GASKET SEALED HYDRAULIC FITTINGS MAY BE USED (NOT SUPPLIED). THESE PORTS WILL ALSO ACCEPT FITTINGS IN ACCORDANCE WITH DIN3852 OR ISO6149 (M10 x 1.0).

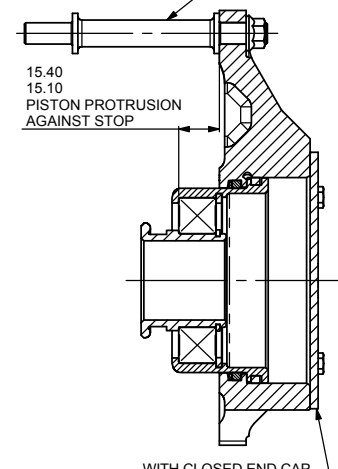


SLAVE IN THE FULLY RELEASED POSITION

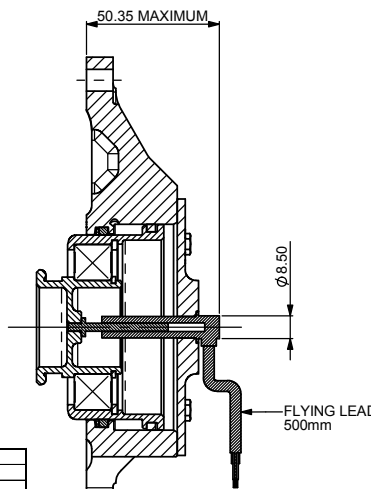


SCRAPER RING TO BE ORIENTATED AS SHOWN

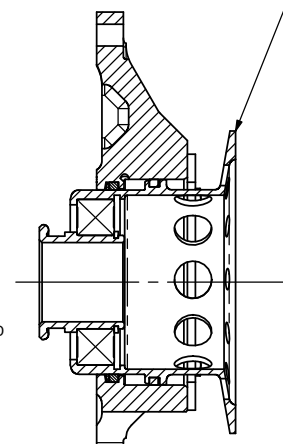
SLAVE SETTING HEIGHT TO BE CONTROLLED BY THE USE OF CORRECT LENGTH MOUNTING STUDS/SLEEVES, TO ENSURE PROPER FUNCTIONING OF THE RELEASE MECHANISM. FOR ACTUAL STUD/SLEEVE DIMN PLEASE REFER TO CLUTCH INSTALLATION DRAWING.



SLAVE IN THE FULLY WORN POSITION



OPTIONAL LVDT KIT



ALTERNATIVE LVDT MOUNTING

### SLAVE CYLINDER DETAILS

THIS SLAVE CYLINDER HAS BEEN DESIGNED TO MOUNT OVER THE CLUTCH. THE ALUMINIUM BODY HAS A SPECIAL HARD WEARING, LOW FRICTION COATING TO MINIMISE SEAL WEAR. THE SEALS ARE RESISTANT TO HIGH TEMPERATURES AND UTILISE A SCRAPER RING.

ASSEMBLY NUMBER	CP6245-7	CP6245-8
ASSEMBLY MOUNTING P.C.D.	Ø193.00	Ø185.00
STROKE	15.70 ± 0.25 mm	
WEIGHT	753g	
X-SECTIONAL AREA	910.90 mm <sup>2</sup> (1.411 sq <sup>2</sup> )	
EFFECTIVE BORE DIAMETER	34.06 mm (1.341")	
MAX. INPUT PRESSURE	6.9 N/mm <sup>2</sup> (1000 P.S.I.)	
HYDRAULIC FLUID	AP RACING 551	
HYDRAULIC THREADS	M10 x 1.0	
CP3749-3	SLAVE CYLINDER SEAL REPAIR KIT	
CP3457-12	REPLACEMENT RELEASE BEARING	
CP7270-6	CLUTCH LVDT KIT	
CP7270-4	REPLACEMENT LVDT SENSOR	

### LVDT NOTE

AN OPTIONAL LVDT KIT IS AVAILABLE TO ENABLE CLUTCH TRAVEL AND WEAR DATA TO BE RECORDED. THIS KIT IS ONLY AVAILABLE FOR USE WITH CONCENTRIC DRIVE & INPUT SHAFTS.

SPECIFICATION	
INPUT VOLTAGE AND FREQUENCY	3.000V RMS ± 5% AT 5KHz ± 5% SINEWAVE
ELECTRICAL OUTPUT (R)	$R = (V_a - V_b) / (V_a + V_b)$
PROPORTIONAL TO POSITION	
LINEARITY (LEAST SQUARES BEST FIT)	< ± 3.0% TOTAL STROKE
INPUT IMPEDANCE	> 150Ω
SUMMED OUTPUT VOLTAGE (V <sub>a</sub> - V <sub>b</sub> )	0.7Vv ± 20%
RADIOMETRIC SENSITIVITY (R)	0.0441 ± 3% (LEAST SQUARES BEST FIT)
LOAD / SECONDARY COIL	< 50KΩ
INSULATING RESISTANCE (ALL LEADS TO CASE)	> 20MΩ @ 500Vdc
OPERATING TEMPERATURE RANGE	-55°C TO +200°C

Issue No.	Alterations			Zone	Initials
	Date & No.	Particulars	#		
1	28/03/01 C1247	FIRST ISSUE	#		
2	07/11/01	LVDT FLYING LEAD AND SPEC. NOTE ADDED.	#		
3	03/11/04 C2441	LVDT AND SPEC NOTE : CP7270-6 WAS CP3749-7	#	JG	
4	18/09/06 C2972	DEBRIS SLOT AND NOTE ADDED TO THE OPEN TYPE END CAP	G4	JG	
5	08/01/08	EQUI-SPACED REMOVED FROM 3 HOLE NOTE	F1	JG	
6	17/03/16	VIEW OF SCRAPER RING FITTING ADDED.	#	JG	

SCALE 1:1 SHEET 1 OF 1

DRAWN: Jeremy Govan

APPROVED:

DERIVED FROM: CP6245-1CD

TITLE  
CONCENTRIC SLAVE CYLINDER  
INSTALLATION DRAWING

DRG NO. CP6245-1CD