

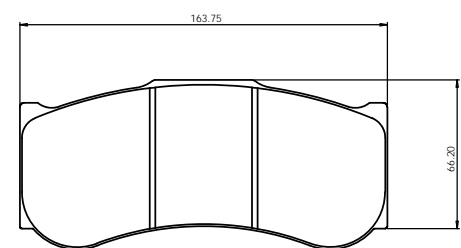
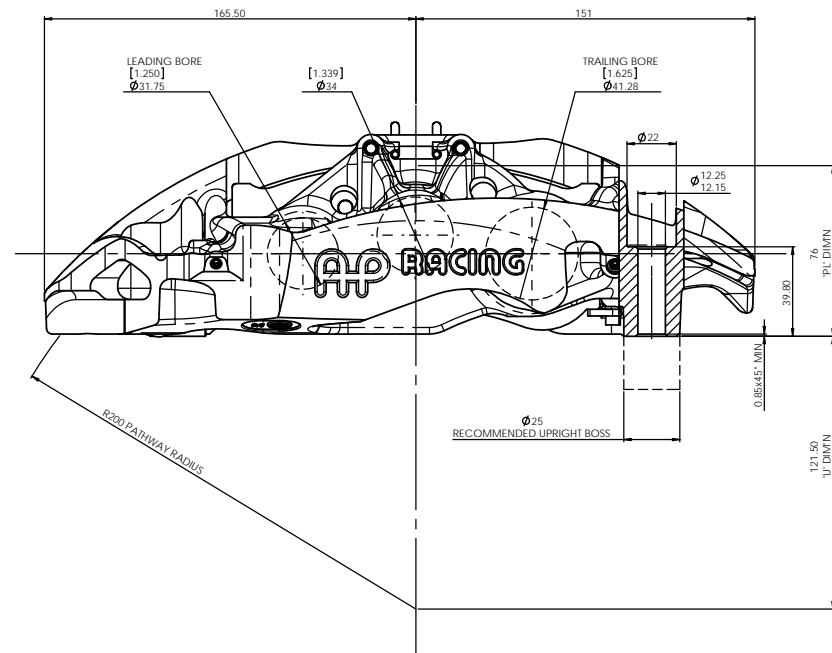
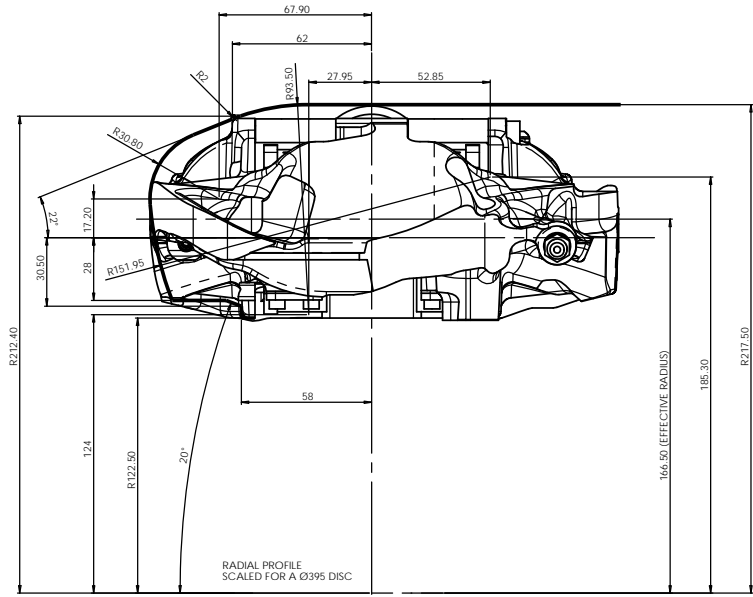
B1 INSTALLATION DRAWING

IF THIS DOCUMENT IS PRINTED IN HARDCOPY, IT IS FOR INFORMATION USE ONLY AND THEREFORE IS NOT SUBJECT TO UPDATING CONTROLS. ALWAYS REFER TO SOLIDWORKS VIEWER FOR LATEST ISSUE



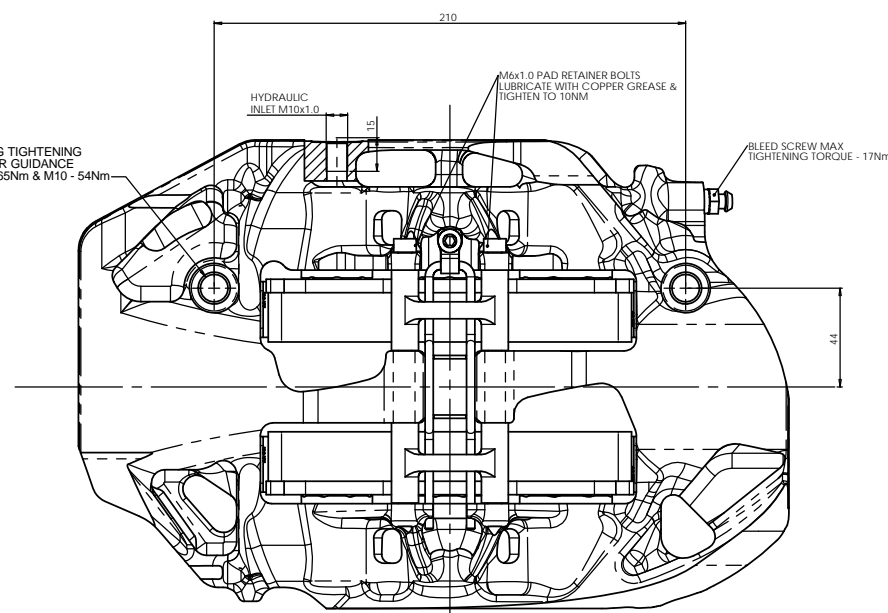
THIS DRAWING IS CONFIDENTIAL AND IS SUPPLIED ON THE EXPRESS CONDITION THAT IT SHALL NOT BE LOANED OR COPIED OR DISCLOSED TO ANY OTHER PERSON OR USED FOR ANY OTHER PURPOSE WITHOUT THE WRITTEN CONSENT OF AP RACING LTD.

AP Racing
Wheler Road
Coventry
CV3 4LB
Tel: +44 024 7663 9595
Fax: +44 024 7663 9559
e-mail: sales@apracing.co.uk
Web site: HTTP://www.apracing.com



CP6268D62 FAMILY IRON PAD
PAD AREA - 94.7cm²
FULL AREA - 97.9cm²
THICKNESS - 28MM

TYPICAL MTG TIGHTENING TORQUE, FOR GUIDANCE ONLY: M12 - 65Nm & M10 - 54Nm



GENERAL DESCRIPTION
6 PISTON DIFFERENTIAL BORE CALIPER TO SUIT UP TO Ø395 x 40MM DISC

APPLICATION - TOURING CAR / GT / COMPETITION KITS FRONT

TECHNICAL INFORMATION & INSTALLATION DATA
TOTAL PISTON AREA (6) - 60.75cm²
PISTON MATERIAL - STAINLESS STEEL
BODY MATERIAL - ALUMINIUM ALLOY
ASSEMBLY WEIGHT LESS PADS - 3.54KG
RECOMMENDED MINIMUM WORN STACK HEIGHT - 57MM

DISC & CALIPER MOUNTING TOLERANCES TO BE SUCH THAT THE DISC IS CENTRAL TO THE CALIPER TO WITHIN ±0.5mm.
CALIPER TO BE MOUNTED WITHIN ±15° FROM VERTICAL.
DISC DIAMETRAL CLEARANCE SHOULD BE 2.5mm NOM. FROM DISC O.D. TO PATHWAY.

KEY TO DIMENSIONS
'PL': TOP OF PAD MATERIAL TO MOUNTING BOSS FACE WITH PAD SITTING DOWN ON LEDGE.
'U': WHEEL CENTRE LINE TO CALIPER MOUNTING BOSS FACE (DISC Ø/2)-DIMENSION 'PL'.

CALIPER PART NUMBERS
CP6268-12S7L - RIGHT HAND TRAILING (BEHIND AXLE)
CP6268-13S7L - LEFT HAND TRAILING (BEHIND AXLE)

Issue No	Alterations		
	Date & No.	Particulars	Zone / Initials
1	23/10/12 B6647	FIRST ISSUE	SAT
2	27/02/14 RAC22128	RECOMMENDED UPRIGHT BOSS DIAMETER ADDED	JN
3	15/01/18 B7749	PICTORIAL UPDATE TO REFLECT CHANGE OF FORGING AND BALL & GRUB PORTING	SAT

SCALE 1:1 SHEET 1 OF 2

DRAWN Steve Thomas

APPROVED

DERIVED FROM

TITLE
6 POT FORGED RADICAL
BRAKE CALIPER

DRG NO. CP6268-11CD

B1

INSTALLATION DRAWING

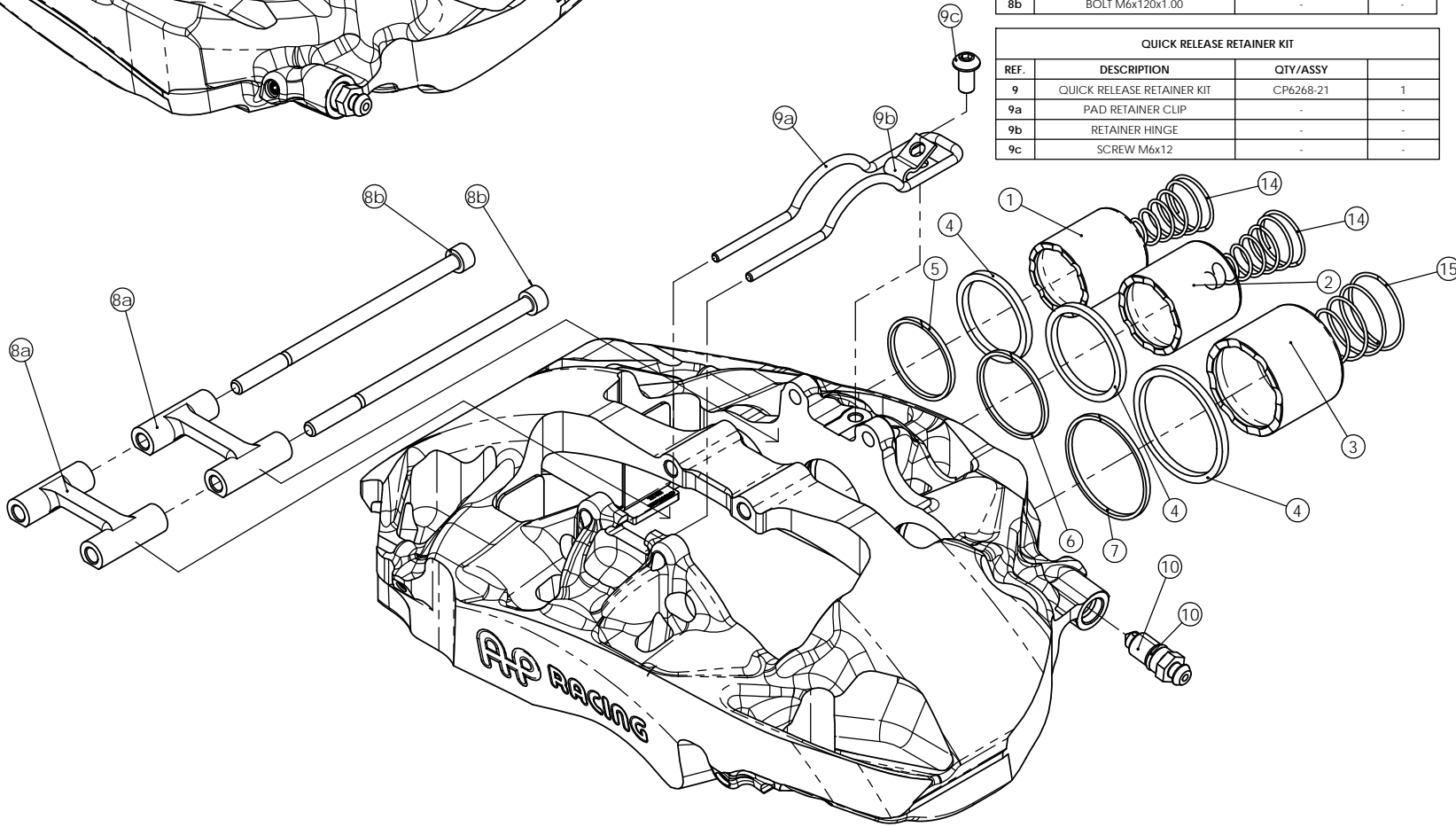
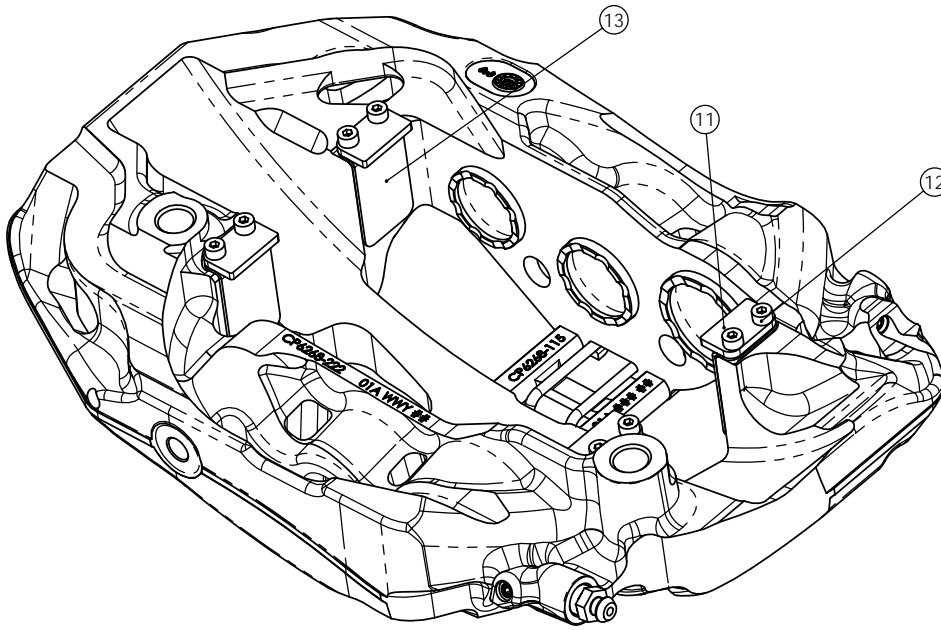
IF THIS DOCUMENT IS PRINTED IN HARDCOPY IT IS FOR INFORMATION USE ONLY AND THEREFORE IS NOT SUBJECT TO UPDATING CONTROLS, ALWAYS REFER TO SOLIDWORKS VIEWER FOR LATEST ISSUE



THIS DRAWING IS CONFIDENTIAL AND IS SUPPLIED ON THE EXPRESS CONDITION THAT IT SHALL NOT BE LOANED OR COPIED OR DISCLOSED TO ANY OTHER PERSON OR USED FOR ANY OTHER PURPOSE WITHOUT THE WRITTEN CONSENT OF AP RACING LTD.



AP Racing
 Wheler Road
 Coventry
 CV3 4LB
 Tel: +44 024 7663 9595
 Fax: +44 024 7663 9559
 e-mail: sales@apracings.co.uk
 Web site: HTTP://www.apracings.com



CP6268-2/3S7L-V8SC SPARES			
REF	DESCRIPTION	PART NO.	QTY / ASSY
1	Ø1 1/4" SST PISTON	CP6268-104	2
2	Ø34MM SST PISTON	CP6268-105	2
3	Ø1 5/8" SST PISTON	CP6268-106	2
4	SEAL KIT (6 SEALS)	CP8518-EFK	1
5	Ø1 1/4" SUPPORT RING	CP3804-113	2
6	Ø34MM SUPPORT RING	CP3804-114	2
7	Ø1 5/8" SUPPORT RING	CP3804-104	2
10	BLEED SCREW KIT	CP3880-1	1
11	PAD SUPPORT	CP6268-112	4
12	M4x0.7 SOCKET HEAD CAP SCREW	CP3215-115	8
13	PAD ABUTMENT PLATE	CP6268-111	4
14	7Lb AKB SPRING	CP4100-121	4
15	7Lb AKB SPRING	CP2667-113	2

PAD RETAINER KIT			
REF.	DESCRIPTION	PART NO.	QTY
8	PAD RETAINER KIT	CP6268-20	1
8a	PAD RETAINER	-	-
8b	BOLT M6x120x1.00	-	-

QUICK RELEASE RETAINER KIT			
REF.	DESCRIPTION	QTY/ASSY	
9	QUICK RELEASE RETAINER KIT	CP6268-21	1
9a	PAD RETAINER CLIP	-	-
9b	RETAINER HINGE	-	-
9c	SCREW M6x12	-	-

Issue No.	Alterations			Zone	Initials
	Date & No.	Particulars			

SCALE 1:2 SHEET 2 OF 2
 DRAWN Steve Thomas
 APPROVED
 DERIVED FROM
TITLE
6 POT FORGED RADICAL
BRAKE CALIPER
 DRG NO. CP6268-11CD