

B1 INSTALLATION DRAWING

IF THIS DOCUMENT IS PRINTED IN HARDCOPY, IT IS FOR INFORMATION USE ONLY AND THEREFORE IS NOT SUBJECT TO UPDATING CONTROLS. ALWAYS REFER TO SOLIDWORKS VIEWER FOR LATEST ISSUE



THIS DRAWING IS CONFIDENTIAL AND IS SUPPLIED ON THE EXPRESS CONDITION THAT IT SHALL NOT BE LOANED OR COPIED OR DISCLOSED TO ANY OTHER PERSON OR USED FOR ANY OTHER PURPOSE WITHOUT THE WRITTEN CONSENT OF AP RACING LTD.

AP Racing
Wheler Road
Coventry
CV3 4LB
Tel: +44 024 7663 9595
Fax: +44 024 7663 9559
e-mail: sales@apracings.co.uk
Web site: HTTP://www.apracings.com

GENERAL DESCRIPTION.

A SIX PISTON, DIFFERENTIAL BORE CALIPER DESIGNED TO OPERATE ON A VENTILATED IRON DISC OF Ø390x35.6 WIDE, OR A Ø380x37 CARBON DISC.

THE CALIPER HAS SEALS IN THE MOUTH OF THE BORE.

THE CALIPER CAN ACCOMMODATE AN LVDT, WHICH DETECTS THE MOVEMENT OF AN INBOARD PISTON & SO GIVES A MEASURE OF FRICTION MATERIAL WEAR.

INSULATING CAPS CAN BE FITTED WHEN USED WITH A 35.6mm DISC AND 30mm THICK PADS - SUFFIX 'C' (REPLACING 'P') ON PART NUMBER WILL SPECIFY CAPS AS BUILT.

SEE SHEET TWO FOR DETAILS OF PART NUMBERS OF CAPS AND LVDT.

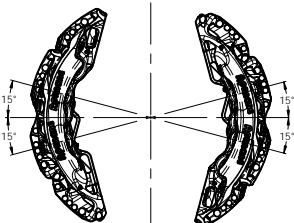
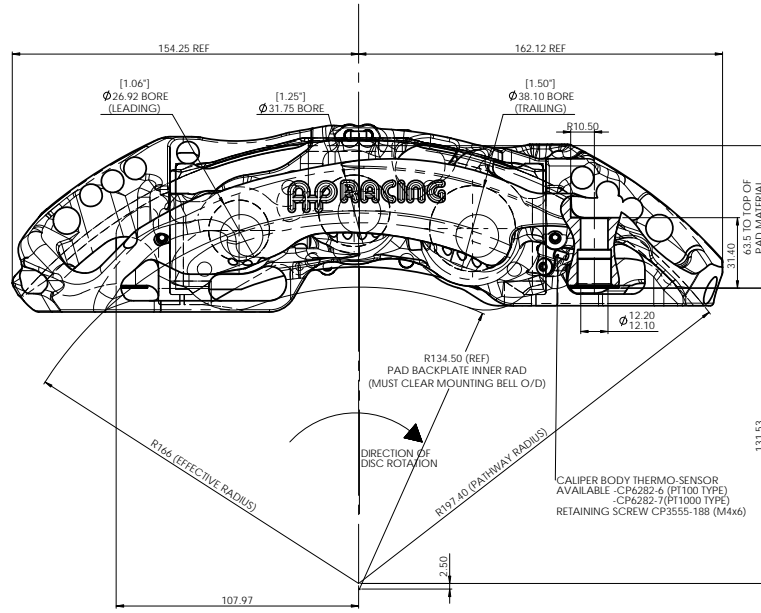
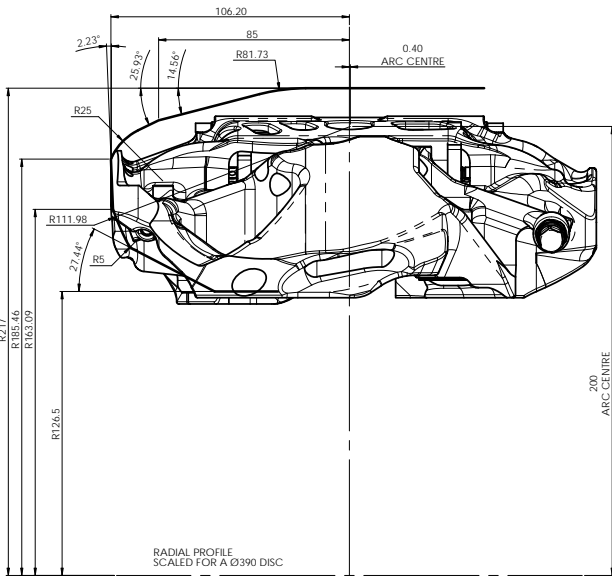
APPLICATION - GT FRONT CALIPER.

TECHNICAL & INSTALLATION DATA

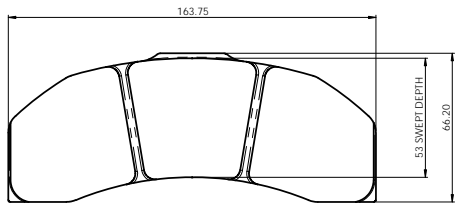
TOTAL PISTON AREA (6) - 50.1 cm²
PISTON MATERIAL - TITANIUM ALLOY
BODY MATERIAL - ALUMINIUM ALLOY.
HYDRAULIC PORT THREADS - M10x1
CALIPER WEIGHT LESS PADS - 2485g (EST. WITHOUT PISTON CAPS)
THE INCLUSION OF PAD WEAR INDICATORS ADDS APPROX. 25g.

ASSEMBLY No.	CALIPER HANDING
CP6277-2	RHT RIGHT HAND BEHIND AXLE (AS DRAWN)
CP6277-3	LHT LEFT HAND BEHIND AXLE

EXAMPLE PART # - CP6277-2S (SIDE FEED) 7 (7th AKB SPRING) M (TITANIUM PISTONS)
P (PROVISION FOR PISTON CAPS)



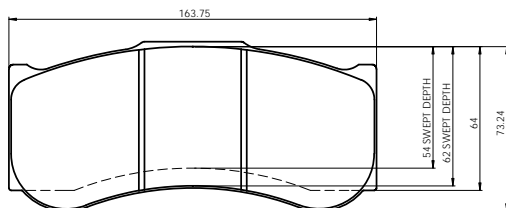
FOR OPTIMUM BLEED, THE CALIPER SHOULD BE INSTALLED IN THE LEADING OR TRAILING POSITION, BETWEEN THE ANGLES SHOWN.



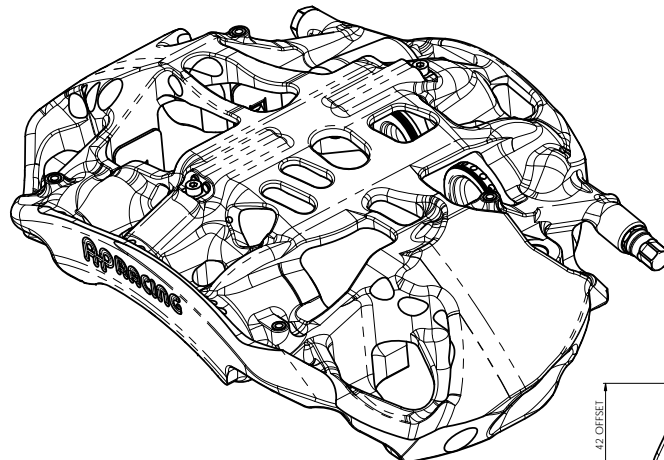
CP2872-518/519(S)H** CARBON/CARBON PAD

PART NO.	THICKNESS	MATERIAL	AREA	SLOTS
CP2872-518	27mm	H14/H18	83.30cm ²	NO
CP2872-518S	27mm	H14/H18	78.63cm ²	YES
CP2872-519	31.5mm	H14	83.30cm ²	NO
CP2872-519S	31.5mm	H14	78.63cm ²	YES

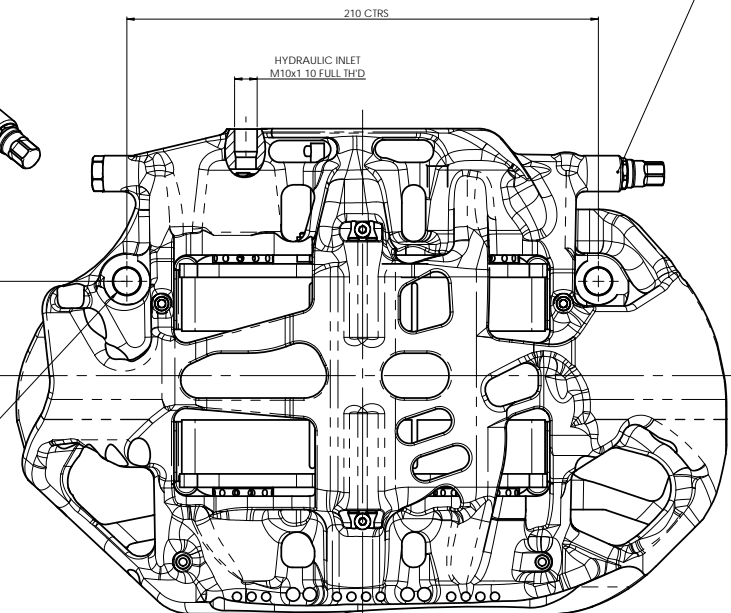
EXAMPLE PART NUMBER: CP2872-518SH18



CP6276 / CP6277 FAMILY IRON PAD
AREA: 94.72cm² (D62), 82.33cm² (D54)
THICKNESS: 32mm (CP6277), 30mm (CP6276)
EXAMPLE PART NUMBER: CP6276D62***
WHERE *** DENOTES MATERIAL SUFFIX



TYPICAL MTG TIGHTENING TORQUE, FOR GUIDANCE ONLY: M12 - 65Nm & M10 - 54Nm



DRY BREAK TO BE USED IN CONJUNCTION WITH CP6300-7 BLEED SYSTEM FITTING. FOR FURTHER DRY BREAK INFORMATION & SPARES REFER TO CP6300-13CD INSTALLATION DRAWING.

CONFIGURATION	CAPS FITTED?	NEW DISC THNESS	MIN WORN DISC THNESS	NEW PAD THNESS	MIN WORN PAD THNESS	NEW STACK NOM	MIN WORN STACK	AVAILABLE WEAR	MAX WEAR ON WORST SIDE
35.6mm IRON DISC	NO	35.6	34.6	32	6	99.6	46.6	53	26.5
35.6mm IRON DISC	YES	35.6	34.6	30	6	95.6	46.6	49	24.5
37mm CARBON DISC	NO	37	25	25	11	87	47	40	20

Issue No.	Date & No.	Particulars	Zone	Initials
1	03/11/15 B7407	FIRST ISSUE		DW
2	13 JAN '16 B7306.07	SHT2: PAD ABUTMENT ROD (ITEM 12) WAS CP6277-107 TUBE	2K	JT

SCALE 1:1 SHEET 1 OF 2

DRAWN Dan Woodcock

APPROVED

DERIVED FROM #

TITLE
6 PISTON MONOBLOC
GT FRONT CALIPER

DRG NO. CP6277-10CD

B1 INSTALLATION DRAWING

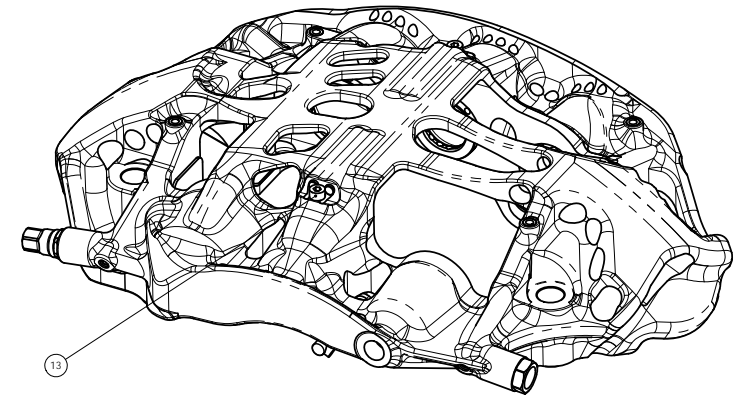
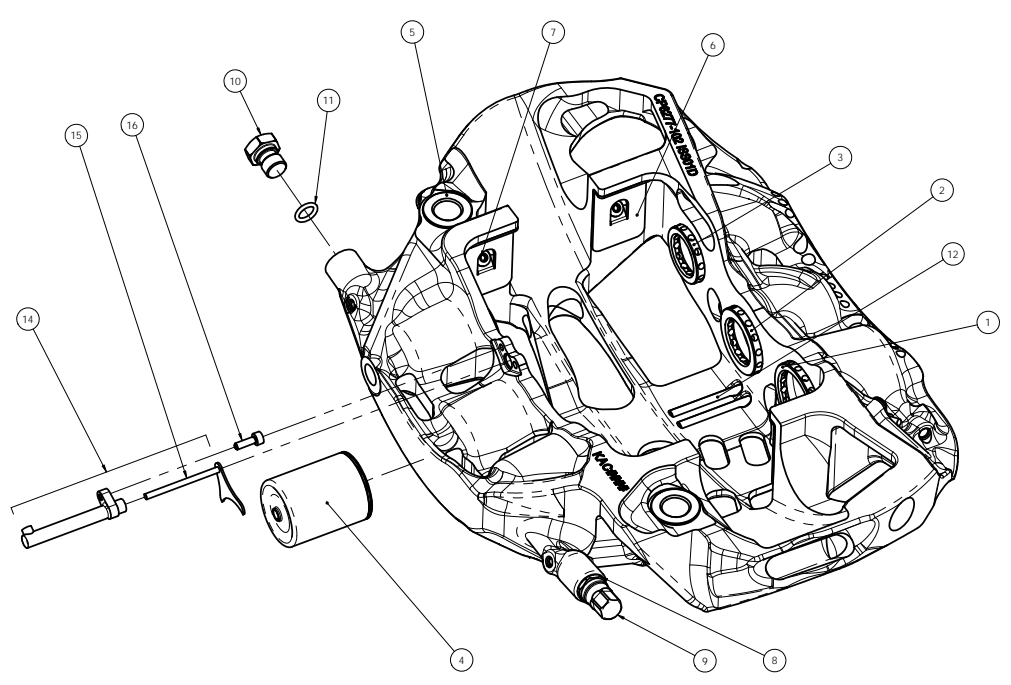
IF THIS DOCUMENT IS PRINTED IN HARDCOPY, IT IS FOR INFORMATION USE ONLY AND THEREFORE IS NOT SUBJECT TO UPDATING CONTROLS. ALWAYS REFER TO SOLIDWORKS VIEWER FOR LATEST ISSUE



THIS DRAWING IS CONFIDENTIAL AND IS SUPPLIED ON THE EXPRESS CONDITION THAT IT SHALL NOT BE LOANED OR COPIED OR DISCLOSED TO ANY OTHER PERSON OR USED FOR ANY OTHER PURPOSE WITHOUT THE WRITTEN CONSENT OF AP RACING LTD.

AP Racing
Wheler Road
Coventry
CV3 4LB
Tel: +44 024 7663 9595
Fax: +44 024 7663 9559
e-mail: sales@apracing.co.uk
Web site: HTTP://www.apracing.com

REF.	PART #	DESCRIPTION	QTY	FITTING NOTES
1	CP6277-106	PISTON Ø38.1 x 40.53 Ti	2	
2	CP6277-105	PISTON Ø31.8 x 40.53 Ti	1	
3	CP6277-104	PISTON Ø27 x 40.53 Ti	2	
4	CP4969-165	PISTON Ø31.8 x 40.53 Ti (SUITS LVDT)	1	
5	CP6277-108	LOWER MTG BUSH	2	USE LOCTITE 648 WITH ACTIVATOR.
6	CP6277-109	PAD ABUTMENT WEAR PLATE	4	APPLY 736 RTV SILICONE SPARINGLY BEHIND THE ABUTMENT PLATE ENSURING ENTIRE CONTACT FACE IS COVERED. APPLY PRESSURE TO ABUTMENT PLATE WHEN FITTING TO ENSURE MINIMUM FILM THICKNESS AND AVOID ANY GAP. ENSURE ABUTMENT PLATE SITS CORRECTLY AGAINST CALIPER BODY BEFORE FITTING RETAINING SCREWS.
7	CP3355-114	BUTTON HEAD SCREW-M4x0.7 6 LONG	4	APPLY A 1-2MM DROP OF LOCTITE 270 TO THE 2nd FROM LAST THREAD WHEN FITTING. TIGHTENING TORQUE - 3.7Nm
8	CP6300-21	BLEED VALVE	1	APPLY LOCTITE 270 TO THREAD UPON ASSEMBLY. TIGHTENING TORQUE 13Nm. CAP TIGHTENING TORQUE IS 4Nm.
9	CP6300-228	BLEED VALVE CAP (SPARES ONLY)	AS REQD	
10	CP6300-103	BLEED PORT PLUG	1	APPLY LOCTITE 270 TO THREAD UPON ASSEMBLY. TIGHTENING TORQUE 13Nm.
11	CP3076-128	BLEED PORT PLUG SEAL	1	
12	CP6277-116	PAD ABUTMENT ROD	4	TO REPLACE A WORN OR DAMAGED PAD ABUTMENT ROD, REMOVE M4 SCREW (13) AND DRIVE ROD OUT WITH A PIN PUNCH FROM INSIDE. CLEAN UP HOLE, FIT NEW ROD WITH A SMEAR OF 736 RTV SILICONE & RE-FIT SCREW.
13	CP5166-108	CAP SCREW-M04x0.7 8 LONG	2	APPLY A 1-2MM DROP OF LOCTITE 270 TO THE 2nd FROM LAST THREAD WHEN FITTING.
14	CP4969-506	LVDT ASSY (COMPLETE)	1	
15	CP4969-507	LVDT ROD & YOKE S/ASSY (SPARES ONLY)	AS REQD	
16	CP6376-105ST	CAP SCREW-M03x0.5 10 LONG	1	APPLY A 1-2MM DROP OF LOCTITE 270 TO THE 2nd FROM LAST THREAD WHEN FITTING.
	CP4518-CEJ	SEAL KIT (4 SEALS)	1	REFER TO PUBLICATION REF: P14.290 & P14.220
	CP4100-121	7lb ANTI KNOCK-BACK SPRING (C,E PISTONS)	4	
	CP2667-113	7lb ANTI KNOCK-BACK SPRING (J PISTON)	2	
	CP4528-CEJ	INSULATING CAP KIT	1	



Issue No.	Alterations		
	Date & No.	Particulars	Zone
-		SEE SHEET 1 FOR ISSUE INFORMATION.	

SCALE 1:1 SHEET 2 OF 2

DRAWN Dan Woodcock

APPROVED

DERIVED FROM #

TITLE
6 PISTON MONOBLOC
GT FRONT CALIPER

DRG NO. CP6277-10CD