

# A1 INSTALLATION DRAWING

IF THIS DOCUMENT IS PRINTED IN HARDCOPY IT IS FOR INFORMATION USE ONLY AND THEREFORE IS NOT SUBJECT TO UPDATING CONTROLS. ALWAYS REFER TO SOLIDWORKS VIEWER FOR LATEST ISSUE

FIRST ANGLE PROJECTION

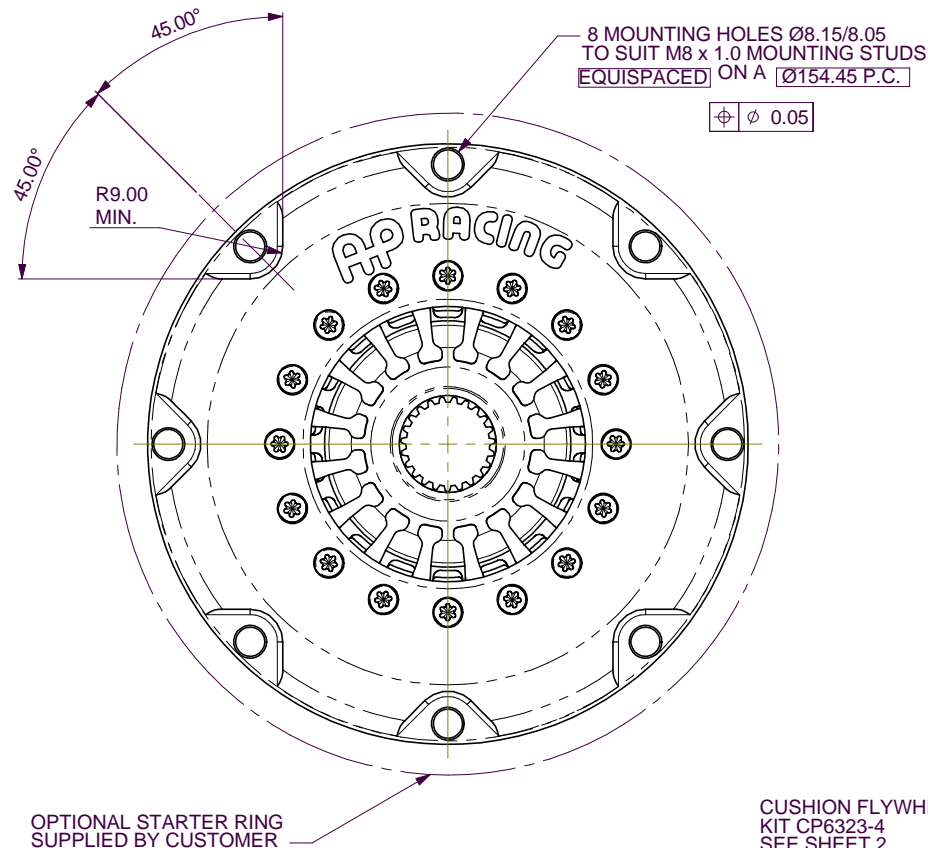
THIS DRAWING IS CONFIDENTIAL AND IS SUPPLIED ON THE EXPRESS CONDITION THAT IT SHALL NOT BE LOANED OR COPIED OR DISCLOSED TO ANY OTHER PERSON OR USED FOR ANY OTHER PURPOSE WITHOUT THE WRITTEN CONSENT OF AP RACING LTD.



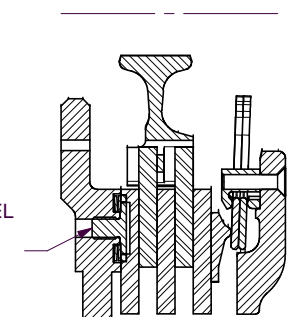
© AP Racing Ltd. 2001  
 AP Racing  
 Wheler Road  
 Coventry  
 CV3 4LB

Tel: +44 024 7663 9595 e-mail: sales@ap racing.co.uk  
 Fax: +44 024 7663 9559 Web site: HTTP://www.ap racing.com

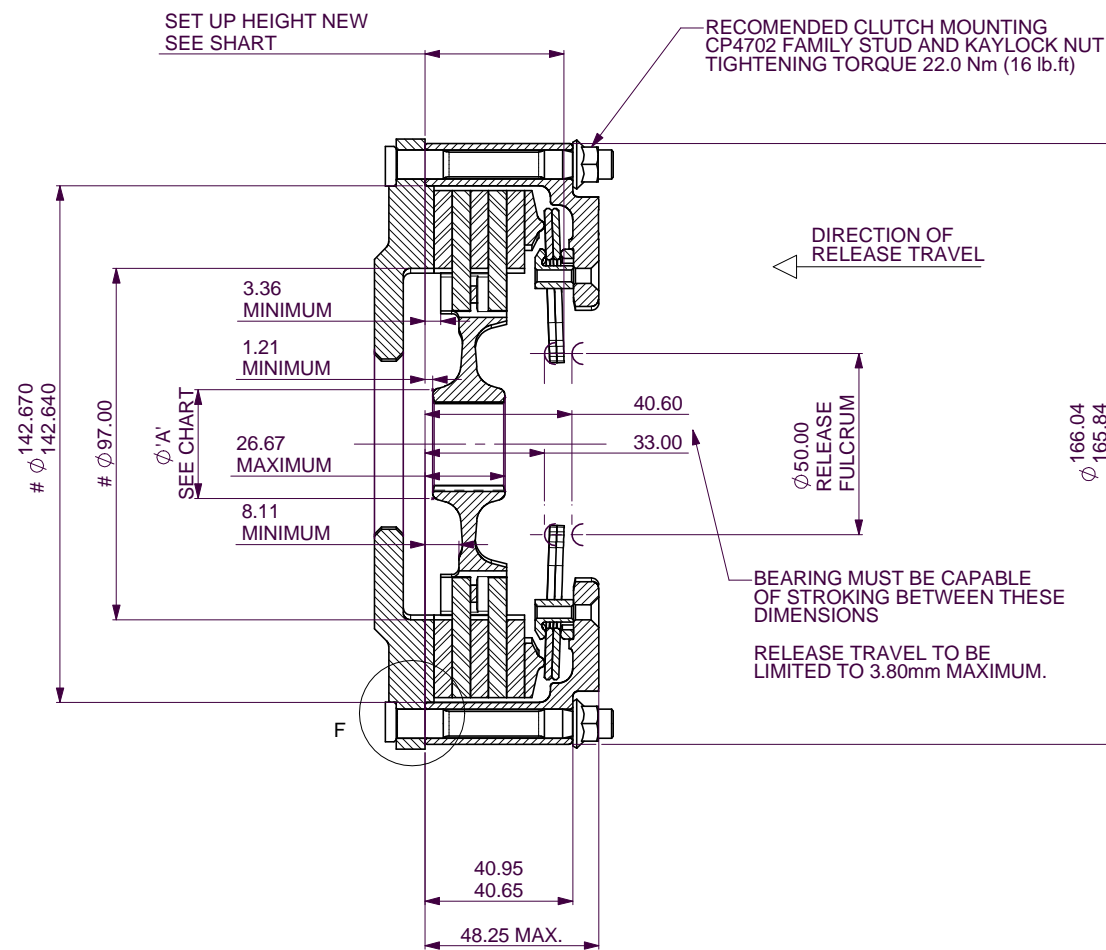
Issue No.	Alterations		Zone	Initials
	Date & No.	Particulars		
1	24/01/02 C2007	FIRST ISSUE	#	JG
2	19/03/02 C2036	SEE SHEET 2	#	JG
3	29/04/02 RAC10476	SEE SHEET 2	#	JG
4	28/08/02 RAC10694	SEE SHEET 2	#	BJP
5	11/02/04	Ø166.04/165.84 ADDED.	#	JG
6	19/10/04 C2551	COVER MOUNTING DETAIL CLARIFIED.	#	JG



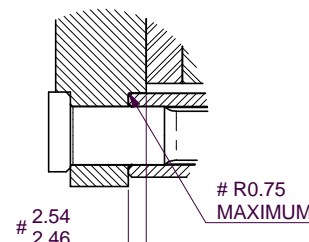
CUSHION FLYWHEEL KIT CP6323-4 SEE SHEET 2



SECTION SHOWING CUSHION FLYWHEEL SYSTEM (CFS) (PART NUMBER SUFFIX -SC)



STEPPED FLYWHEEL ASSEMBLY



DETAIL F SCALE 2 : 1

# - FLYWHEEL DIMENSIONS.  
 ALTERNATIVE CLUTCH MOUNTING: CAP HEAD BOLT (C'BORED TREAD) TIGHTENING TORQUE 22.0 Nm (16 lb ft)

CLUTCH PART No. SUFFIX	CP7322-CE01-SC			
MAXIMUM DYNAMIC TORQUE CAPACITY Nm (lb.ft)	589 (434)			
MAXIMUM WEAR IN #	0.5			
RELEASE LOAD (MAX PEAK WORN) daN	450			
RELEASE LOAD (AT TRAVEL) daN	300			
SET UP HEIGHT NEW *	38.45			
SET UP HEIGHT WORN *	37.36			
SET UP HEIGHT WORN *	40.2			

ASSEMBLY MASS AND INERTIA		
ASSEMBLY MASS (kg)	ASSEMBLY INERTIA (kgm²)	DRIVEN PLATES & HUB INERTIA (kgm²)
1.89	0.00645	0.00095

HUB DETAILS		
HUB PART No.	SPLINE DETAIL	Ø'A' MAX.
CP7322-103S	1.00" x 23T	30.25
CP7322-105S	0.875" x 20T	27.25

# THIS CLUTCH HAS BEEN DESIGNED FOR THE WEAR IN INDICATED, WHICH MUST BE COMPENSATED FOR BY USING PRESSURE PLATES FROM THE KITS DETAILED BELOW. MAXIMUM CARBON STACK WEAR IS 6.00mm  
 AXIAL HUB FLOAT MUST BE MAINTAINED

PRESSURE PLATE KITS. (STEEL)	
STANDARD	CP5253-3
0.50 - 5.50, 0.50 STEPS	
INTERMEDIATE	CP5253-2
0.25 - 5.25, 0.50 STEPS	

SCALE 1:1 SHEET 1 OF 2

DRAWN Jeremy Govan  
 APPROVED  
 DERIVED FROM

TITLE  
 Ø140mm (5.5") CARBON / CARBON  
 2 PLATE CLUTCH INSALLATION

DRG NO. cp7322-1cd

# A1 INSTALLATION DRAWING

IF THIS DOCUMENT IS PRINTED IN HARDCOPY IT IS FOR INFORMATION USE ONLY AND THEREFORE IS NOT SUBJECT TO UPDATING CONTROLS. ALWAYS REFER TO SOLIDWORKS VIEWER FOR LATEST ISSUE

FIRST ANGLE PROJECTION

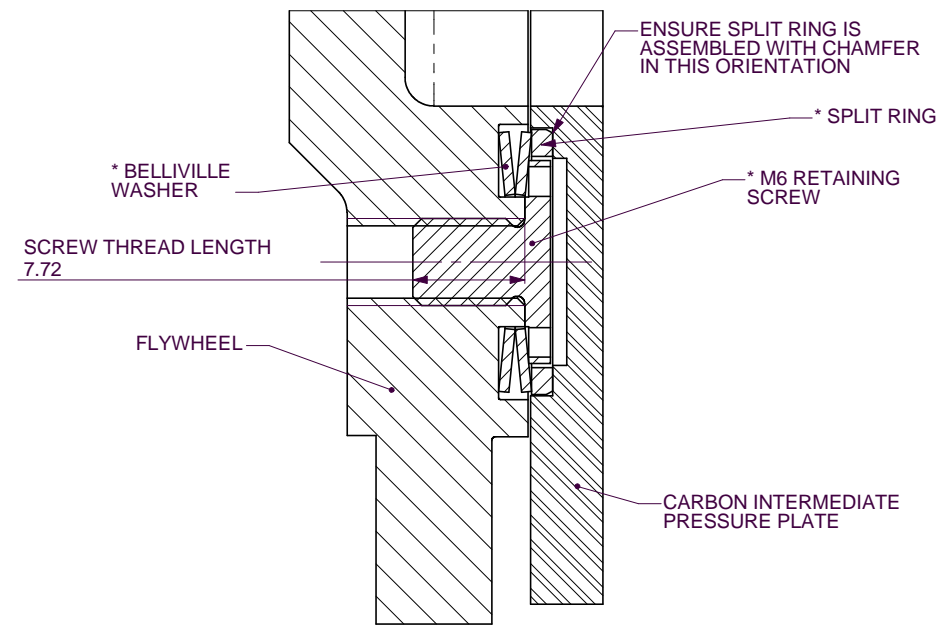
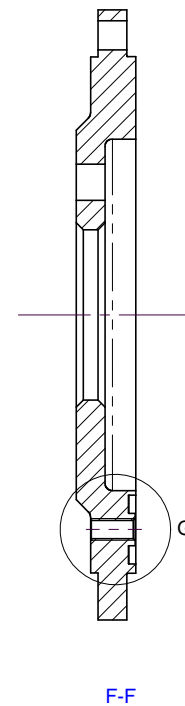
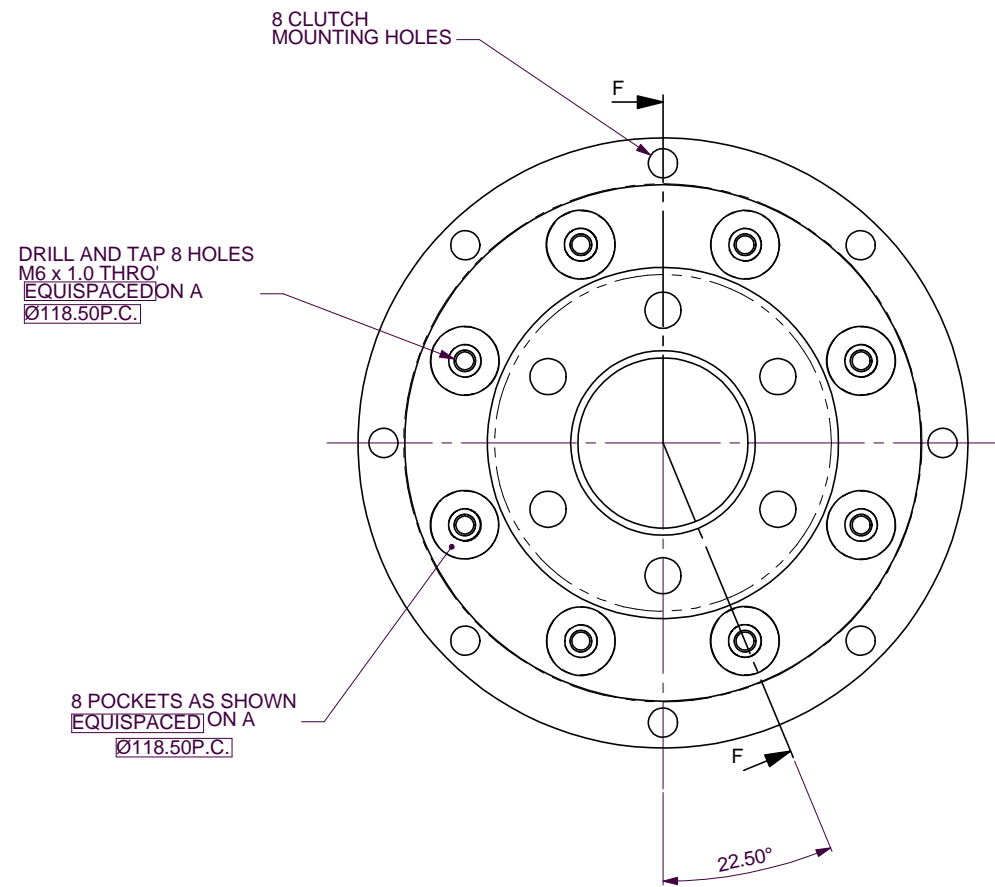
THIS DRAWING IS CONFIDENTIAL AND IS SUPPLIED ON THE EXPRESS CONDITION THAT IT SHALL NOT BE LOANED OR COPIED OR DISCLOSED TO ANY OTHER PERSON OR USED FOR ANY OTHER PURPOSE WITHOUT THE WRITTEN CONSENT OF AP RACING LTD.



© AP Racing Ltd. 2002  
 AP Racing  
 Wheeler Road  
 Coventry  
 CV3 4LB

Tel: +44 024 7663 9595 e-mail: sales@ap racing.co.uk  
 Fax: +44 024 7663 9559 Web site: HTTP://www.ap racing.com

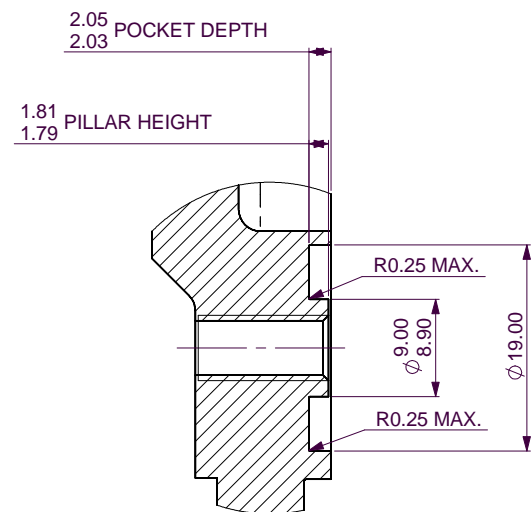
Issue No.	Alterations		Zone	Initials
	Date & No.	Particulars		
1	24/01/02 C2007	SEE SHEET 1	#	JG
2	19/03/02 C2036	CFS KIT VIEW AND PART NUMBER ENLARGED, BELLEVILLE REPLACEMENT NOTE AND MIN HEIGHT ADDED.	K11 C11	JG
3	29/04/02 RAC10476	CFS RETAINING SCREW TOOL DETAIL ADDED.	C7	JG
4	28/08/02 RAC10694	SCREW THREAD LENGTH ADDED	C7	BJP



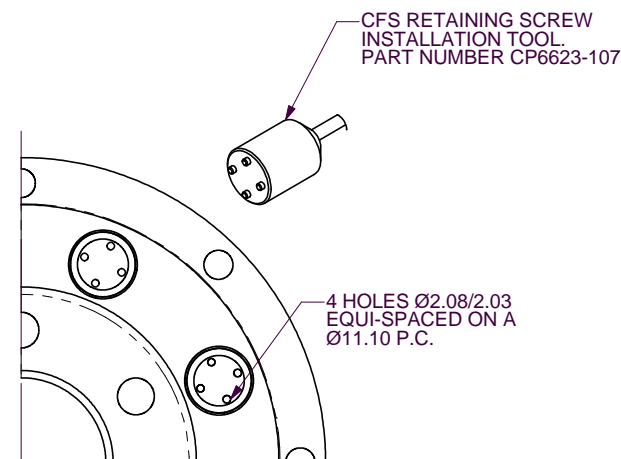
**CUSHION FLYWHEEL COMPONENTS AVAILABLE IN KIT FORM.**  
**PART No. CP6323-4**

**CP6323-4 Cushion Flywheel Kit Installation**

1. Machine 8 equispaced pockets and M6 x 1.0 tapped holes into the friction surface of the flywheel, to the size and position shown on opposite.
2. Place the two Belleville washers supplied into each pocket in the orientation shown below.
3. Apply Loctite 620 to threads and tighten the M6 x 1.0 screws onto the Belleville washers to a torque of 4Nm.
4. Compress split washers using pliers and fit into recesses in bottom carbon/carbon pressure plate. Ensure split washers are flush with the friction face

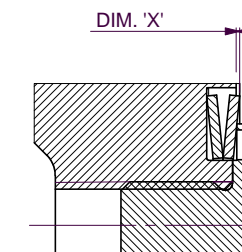


DETAIL G SCALE 3 : 1



**CUSHIONING REPLACEMENT CRITERIA**

WITH TIME AND USE THE CUSHIONING EFFECT WILL DETERIORATE AND COMPONENTS SHOULD BE SERVICED WITH THE ABOVE KIT WHEN EITHER THE BELLEVILLES BECOME LOOSE OR WHEN DIMENSION 'X' FALLS BELOW 0.2, TAKEN AS THE AVERAGE OF 4 EQUALLY SPACED MEASUREMENTS AROUND THE CIRCUMFERENCE OF THE BELLEVILLE.



SCALE 1:1	SHEET 2 OF 2
DRAWN	Jeremy Govan
APPROVED	
DERIVED FROM	
TITLE	
Ø140mm (5.5") CARBON / CARBON 2 PLATE CLUTCH INSALLATION	
DRG NO.	cp7322-1cd