

# A1 INSTALLATION DRAWING

IF THIS DOCUMENT IS PRINTED IN HARDCOPY, IT IS FOR INFORMATION USE ONLY AND THEREFORE IS NOT SUBJECT TO UPDATING CONTROLS. ALWAYS REFER TO SOLIDWORKS VIEWER FOR LATEST ISSUE



THIS DRAWING IS CONFIDENTIAL AND IS SUPPLIED ON THE EXPRESS CONDITION THAT IT SHALL NOT BE LOANED OR COPIED OR DISCLOSED TO ANY OTHER PERSON OR USED FOR ANY OTHER PURPOSE WITHOUT THE WRITTEN CONSENT OF AP RACING LTD.

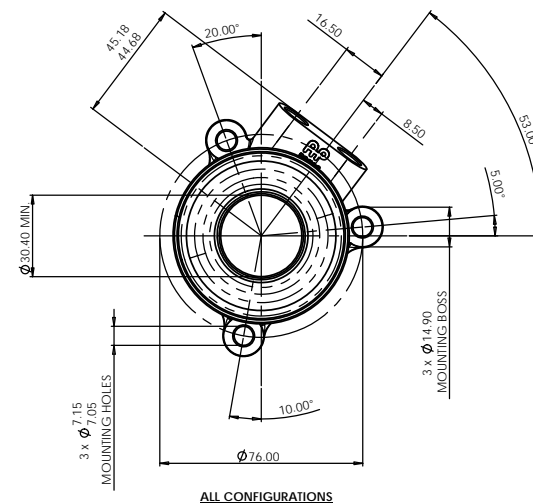
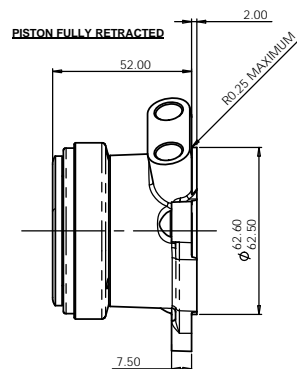
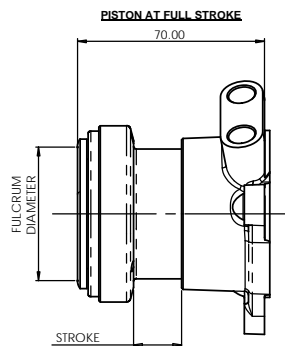


AP Racing  
Wheler Road  
Coventry  
CV3 4LB

Tel: +44 (0) 24 7663 9595  
Fax: +44 (0) 24 7663 9559  
e-mail: engineering@apracings.co.uk  
Web site: http://www.apracings.com

© AP Racing Ltd. 2005

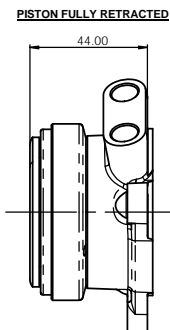
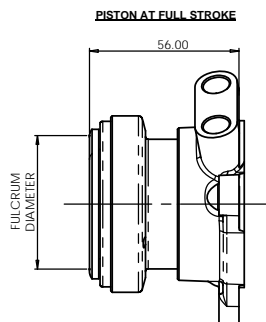
## MINERAL OIL COMPATIBLE SLAVE CYLINDER RANGE



THIS SLAVE CYLINDER FEATURES:  
THE BEARING IS HOUSED IN THE PISTON VIA THE OUTER RACE  
THE INNER RACE ROTATES, SUITABLE FOR HIGH SPEED APPLICATIONS.

### 18mm STROKE - INNER ROTATING RACE (HIGH SPEED)

ASSEMBLY NUMBER	FULCRUM DIAMETER	FULL STROKE	REPLACEMENT BEARING SUB. ASSY.
CP8084-38-MINERAL	38.0 (1.496")	18.0 (0.709")	CP3457-16
CP8084-45-MINERAL	45.0 (1.772")	18.0 (0.709")	CP3457-26
CP8084-50-MINERAL	50.0 (1.969")	18.0 (0.709")	CP3457-11
CP8084-54-MINERAL	54.0 (2.126")	18.0 (0.709")	CP3457-6



THIS SLAVE CYLINDER FEATURES:  
A SHORTENED STROKE SO AS TO REDUCE THE OVERALL LENGTH.  
THE BEARING IS HOUSED IN THE PISTON VIA THE OUTER RACE  
THE INNER RACE ROTATES, SUITABLE FOR HIGH SPEED APPLICATIONS.

ALL OTHER MOUNTING DIMENSIONS REMAIN THE SAME.

### 12 mm STROKE - INNER ROTATING RACE (HIGH SPEED)

ASSEMBLY NUMBER	FULCRUM DIAMETER	FULL STROKE	REPLACEMENT BEARING SUB. ASSY.
CP8084-1238-IN-MINERAL	38.0 (1.496")	12.0 (0.472")	CP3457-16
CP8084-1250-IN-MINERAL	50.0 (1.969")	12.0 (0.472")	CP3457-11
CP8084-1245-IN-MINERAL	45.0 (1.772")	12.0 (0.472")	CP3457-26
CP8084-1254-IN-MINERAL	54.0 (2.126")	12.0 (0.472")	CP3457-6

**NOTE:**  
WHEN LARGE DIAMETER SPLINES ARE USED PLEASE CHECK CLEARANCE OF THE SPLINE IN THE SLAVE CYLINDER BODY.

LARGER SPLINES ALSO HAVE AN INCREASED DRIVEN PLATE HUB BOSS. PLEASE CHECK THE CLEARANCE OF THE DRIVEN PLATE AT MAXIMUM SLAVE TRAVEL.  
SEE THE CLUTCH ASSEMBLY INSTALLATION DRAWING FOR DETAILS.

FOR FURTHER INFORMATION PLEASE CONTACT AP RACING.

### DESCRIPTION

THE CP8084 SERIES CONCENTRIC SLAVE CYLINDER IS A LIGHTWEIGHT, HYDRAULICALLY SELF-CONTAINED UNIT WITH HIGH TEMPERATURE SEALS. ALL SEALING SURFACES ARE PROTECTED BY A HARD WEARING / LOW FRICTION COATING WHICH HELPS PROLONG SEAL LIFE.

ENSURE THAT THE UNIT IS INSTALLED AT THE SPECIFIED ANGLE, WITH THE BLEED PORT UPPERMOST. ALL FITTINGS INTENDED TO SEAT AT THE BOTTOM OF THE HYDRAULIC PORTS MUST HAVE AN INCLUDED ANGLE OF 90°

BODY MATERIAL: ALUMINIUM ALLOY (FORGED)  
PISTON MATERIAL: ALUMINIUM ALLOY

EFFECTIVE AREA: 920 mm<sup>2</sup> (1.426 sq. ft.)  
MAXIMUM STROKE: REFER TO TABLE  
MAXIMUM PRESSURE: 8.6 N/mm<sup>2</sup> (1250 psi)

#### CALCULATED WEIGHTS

CP8084-XX 381 g  
CP8084-12XX 257 g  
CP8084-12XX-IN 346 g

HYDRAULIC PORTS M10x1.0x11.5 MIN. FULL THREAD  
HYDRAULIC FLUID MINERAL OIL

REPLACEMENT SEAL KIT - CP7074-3

HYDRAULIC FITTING KIT (STEEL ADAPTOR 7/16" - 4") - CP3759-6  
HYDRAULIC FITTING KIT (STEEL ADAPTOR 3/8" - 3") - CP3759-5  
FITTINGS TO BE TIGHTENED TO 28 Nm (21 ft.lb)

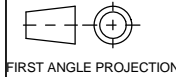
**FOR OUTER ROTATING RACE SLAVE CYLINDERS SEE SHEET 2**

Issue No.	Alterations			Zone	Initials
	Date & No.	Particulars	#		
1	04/01/12 C4652	FIRST ISSUE	#	JG	
2	01/05/14 C4708	FITTINGS TO BE TIGHTENED TO 28 Nm (21 ft.lb) NOTE ADDED	#	JG	
3	08/02/18 C5231-01	CP3457-26 CORRECTED WAS CP3457-19	K9	GS	
4	12/02/18 C5231	DRAWING SPLIT ONTO 2 SHEETS. TO DIFFERENTIATE BETWEEN INNER & OUTER ROTATING RACE SLAVES	K9	GS	

SCALE 1:1	SHEET 1 OF 2
DRAWN	Jeremy Govan
APPROVED	
DERIVED FROM	CP7074-1CD
TITLE	
CONCENTRIC SLAVE CYLINDER	
INSTALLATION DRAWING	
DRG NO.	CP8084-1CD

# A2 INSTALLATION DRAWING

If this document is printed in hardcopy, it is for information use only and therefore is not subject to updating controls. Always refer to viewer for latest issue.



THIS DRAWING IS CONFIDENTIAL AND IS SUPPLIED ON THE EXPRESS CONDITION THAT IT SHALL NOT BE LOANED OR COPIED OR DISCLOSED TO ANY OTHER PERSON OR USED FOR ANY OTHER PURPOSE WITHOUT THE WRITTEN CONSENT OF AP RACING LTD.



AP Racing  
Wheler Road  
Coventry  
CV3 4LB

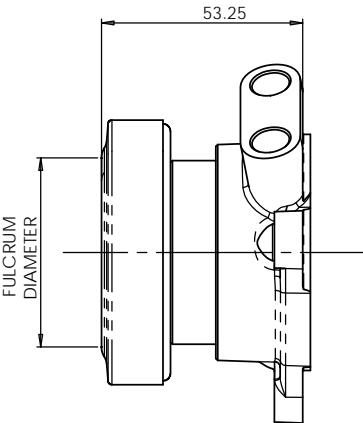
Tel: +44 024 7663 9595  
Fax: +44 024 7663 9559  
e-mail: sales@apracing.co.uk

© AP Racing Ltd. 2014

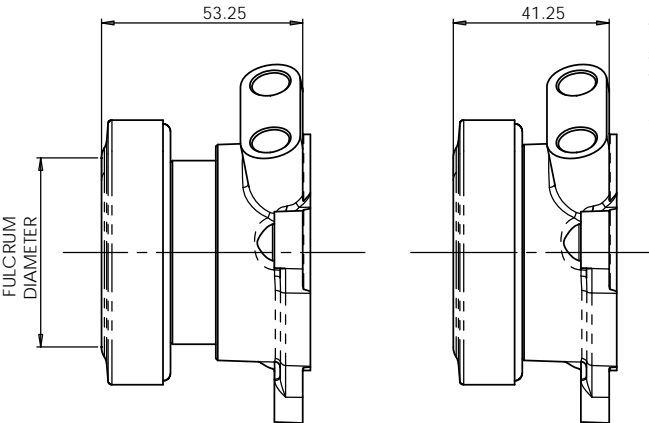
Web site: <http://www.apracing.com>

## MINERAL OIL COMPATIBLE SLAVE CYLINDER RANGE

**PISTON AT FULL STROKE**

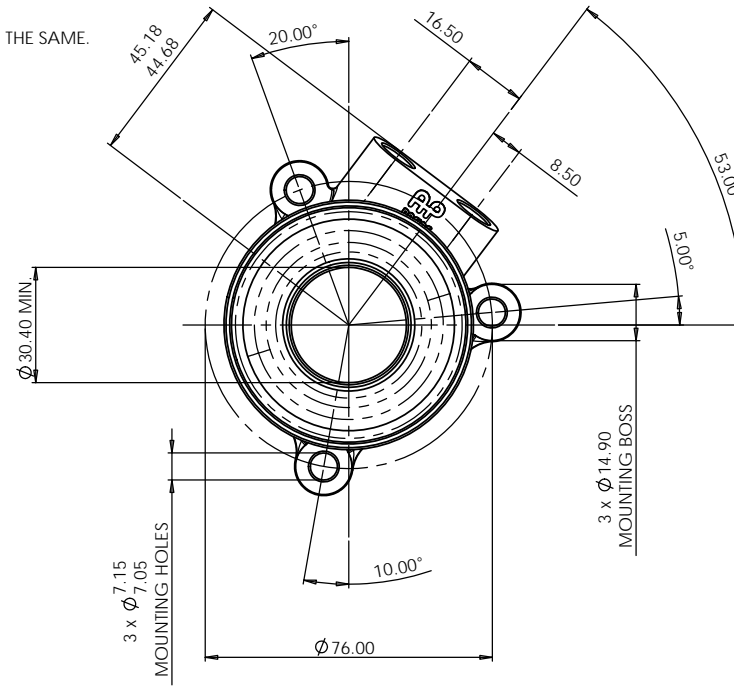


**PISTON FULLY RETRACTED**

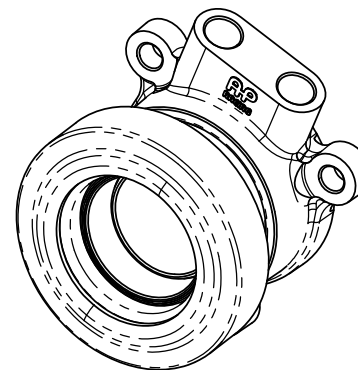


THIS SLAVE CYLINDER FEATURES :  
A SHORTENED STROKE SO AS TO REDUCE THE OVERALL LENGTH.  
THE BEARING HOUSED ON THE PISTON VIA THE INNER RACE WITH THE OUTER RACE ROTATING.

ALL OTHER MOUNTING DIMENSIONS REMAIN THE SAME.



**ALL CONFIGURATIONS**



### 12mm STROKE - OUTER ROTATING RACE

ASSEMBLY NUMBER	FULCRUM DIAMETER	FULL STROKE	REPLACEMENT BEARING SUB. ASSY.
CP8084-1245-MINERAL	45.0 (1.772")	12.0 (0.472")	CP3457-19
CP8084-1250-MINERAL	50.0 (1.969")	12.0 (0.472")	CP3457-9
CP8084-1254-MINERAL	54.0 (2.126")	12.0 (0.472")	CP3457-10

Issue No.	Date & No.	Alterations		Zone	Initials
		Particulars			
-	-	SEE SHEET 1 FOR ISSUE INFORMATION.		-	-

SCALE 1:1 SHEET 2 OF 2

DRAWN Jeremy Govan

APPROVED

DERIVED FROM

TITLE  
CONCENTRIC SLAVE CYLINDER  
INSTALLATION DRAWING

DRG NO. CP8084-1CD

**FOR INNER ROTATING RACE SLAVE CYLINDERS SEE SHEET 1**