

# B1 INSTALLATION DRAWING

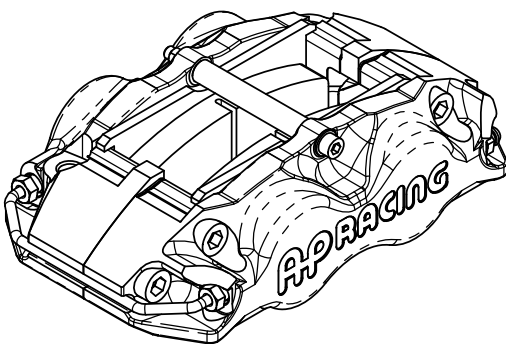
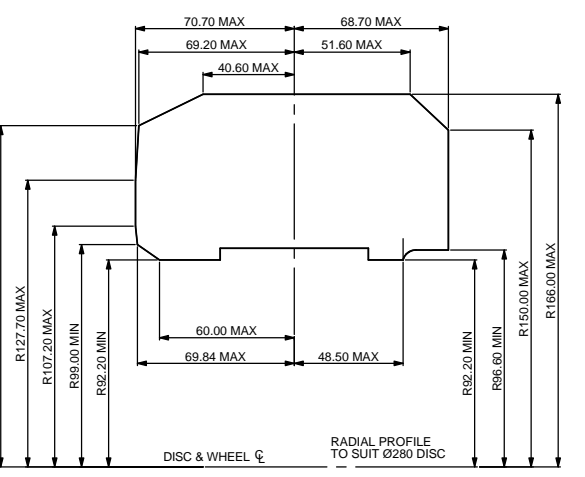
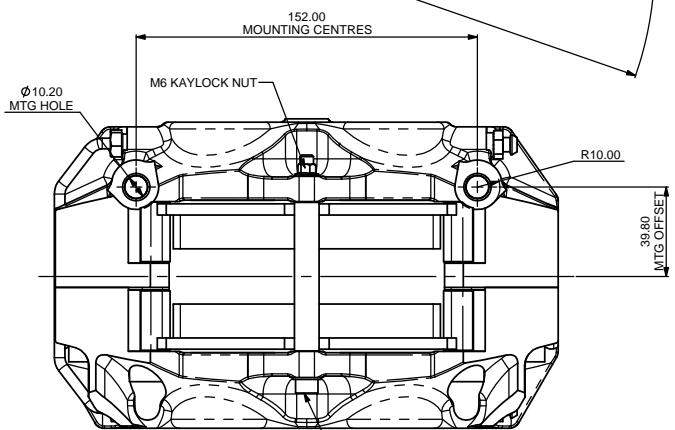
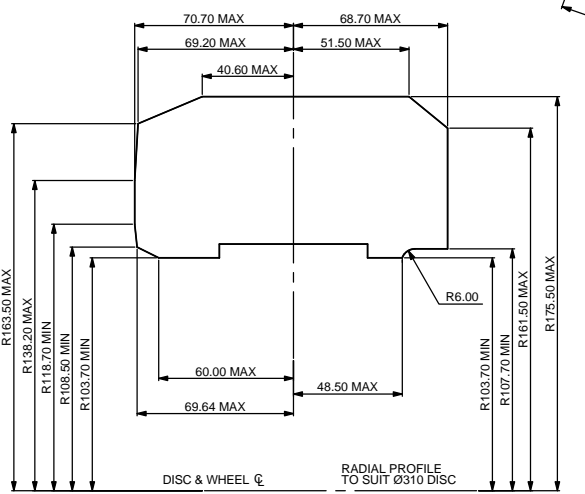
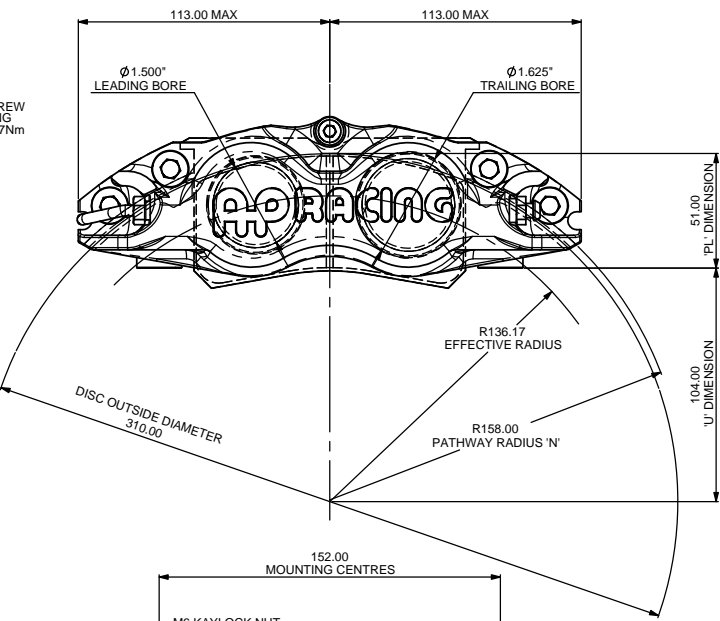
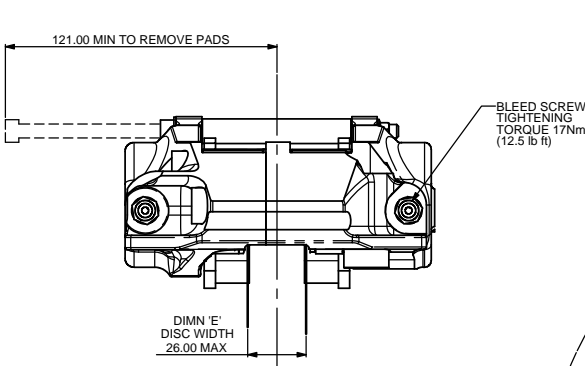
IF THIS DOCUMENT IS PRINTED IN HARD COPY, IT IS FOR INFORMATION USE ONLY AND THEREFORE IS NOT SUBJECT TO UPDATING CONTROLS. ALWAYS REFER TO SOLIDWORKS VIEWER FOR LATEST ISSUE



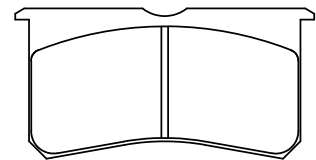
THIS DRAWING IS CONFIDENTIAL AND IS SUPPLIED ON THE EXPRESS CONDITION THAT IT SHALL NOT BE LOANED OR COPIED OR DISCLOSED TO ANY OTHER PERSON OR USED FOR ANY OTHER PURPOSE WITHOUT THE WRITTEN CONSENT OF AP RACING LTD.



**AP Racing**  
Wheler Road  
Coventry  
CV3 4LB  
Tel: +44 024 7663 9595  
Fax: +44 024 7663 9559  
e-mail: sales@apracings.co.uk  
Web site: HTTP://www.apracings.com



**PAD INFORMATION**  
CP8250D41-####



PAD THICKNESS - 20.20mm (0.795")  
PAD AREA - 50.67cm² (7.854 in²)  
PAD VOLUME - 102.35cm³ (6.244 in³)

### GENERAL DESCRIPTION

THIS IS A LOW COST 4 PISTON DIFFERENTIAL BORE CALIPER, DESIGNED TO OPERATE ON A VENTILATED IRON DISC OF Ø285.0 mm TO Ø310.0 mm, 26.0 MAX WIDE DISC. ALL CALIPERS ARE MANUFACTURED WITH BLEED SCREW AND PIPE ASSEMBLY PROTECTION. STAINLESS STEEL PAD ABUTMENT WEAR PLATES AND HIGH TEMPERATURE LOW DRAG SEALS ARE FITTED AS STANDARD. SEALS ARE 'SEAL IN BORE' TYPE.

### TYPICAL APPLICATION

BUDGET RALLY CALIPER.

### TECHNICAL INFORMATION

TOTAL PISTON AREA - 49,56mm²  
PISTON MATERIAL - ALUMINIUM ALLOY (STANDARD)  
BODY MATERIAL - ALUMINIUM ALLOY  
HYDRAULIC CONNECTIONS - M10x1.00

NOTES - SHOULD THE PISTON BE INADVERTENTLY REMOVED, THEY SHOULD BE WIPED CLEAN AND BE SMEARED WITH AP RACING BRAKE FLUID BEFORE REPLACEMENT.

### IMPORTANT INFORMATION

**DISC AND CALIPER MOUNTING TOLERANCES TO BE SUCH THAT THE DISC IS CENTRAL TO THE CALIPER TO WITHIN ±0.019" (0.50mm). THE CLEARANCE FROM DISC DIAMETER TO PATHWAY SHOULD BE 0.098" (2.5mm) NOM.**

### KEY TO DIMENSIONS

- DIMENSION 'PL' - TOP OF PAD MATERIAL TO MOUNTING BOSS FACE WITH PAD HANGING DOWN ON THE RETAINING PINS.
- DIMENSION 'C' - DISC CENTRE LINE TO MOUNTING STUD CENTRE LINE.
- DIMENSION 'U' - WHEEL CENTRE TO CALIPER MOUNTING BOSS FACE, (DISC DIAMETER / 2) - 'PL' DIMENSION.
- DIMENSION 'H' - MOUNTING HOLE DIAMETER.
- RADIUS 'N' - RADIUS OF DISC PATHWAY.
- EFFECTIVE RAD. - DISTANCE FROM WHEEL CENTRE LINE TO NOMINAL PISTON CENTRE LINE.

**AP RACING TECHNICAL SECTION WILL BE PLEASED TO ADVISE ON THE MOST SUITABLE EQUIPMENT FOR ANY APPLICATION.**

### REPLACEMENT SEAL KIT

SEAL KIT (HIGH TEMP) CP4518-KJ

PART NUMBERS:  
CP8350-12S4 RIGHT HAND TRAILING  
CP8350-13S4 LEFT HAND TRAILING  
CP8350-14S4 RIGHT HAND LEADING  
CP8350-15S4 LEFT HAND LEADING

STAINLESS STEEL PISTONS ARE AVAILABLE FOR THIS CALIPER, JUST ADD 'L' TO THE END OF THE PART NUMBER, EG CP8350-12S4L

Issue No	Alterations		
	Date & No.	Particulars	Zone / Initials
1	02/03/2009 B5475	FIRST ISSUE	# CDA
2	09/03/2009 B5475	PAD PART NUMBER & SWEEP DEPTH CORRECTED. CP8250D41 WAS CP8350D43.	# CDA
3	26/03/2009 B5475	MOUNTING OFFSET CHANGED 39.80 WAS 40.80. ADDITIONAL CHANGES MADE TO CLEAR WHEELS. RADIAL PROFILES UPDATED.	# CDA
4	02/10/12 B6624	TIGHTENING TORQUE FOR PAD RETAINER BOLTS 8.5lb ft WAS 11lb ft. COPPER SLIP NOTE ADDED	SAT

SCALE 1:1	SHEET 1 OF 2
DRAWN Chris Arowsmith	
APPROVED	
DERIVED FROM	
TITLE 4 POT, 152.0 x 39.8 RADIAL MTG CALIPER ASSEMBLY	
DRG NO.	CP8350-1CD

# B1 INSTALLATION DRAWING

IF THIS DOCUMENT IS PRINTED IN HARDCOPY, IT IS FOR INFORMATION USE ONLY AND THEREFORE IS NOT SUBJECT TO UPDATING CONTROLS. ALWAYS REFER TO SOLIDWORKS VIEWER FOR LATEST ISSUE



FIRST ANGLE PROJECTION

THIS DRAWING IS CONFIDENTIAL AND IS SUPPLIED ON THE EXPRESS CONDITION THAT IT SHALL NOT BE LOANED OR COPIED OR DISCLOSED TO ANY OTHER PERSON OR USED FOR ANY OTHER PURPOSE WITHOUT THE WRITTEN CONSENT OF AP RACING LTD.



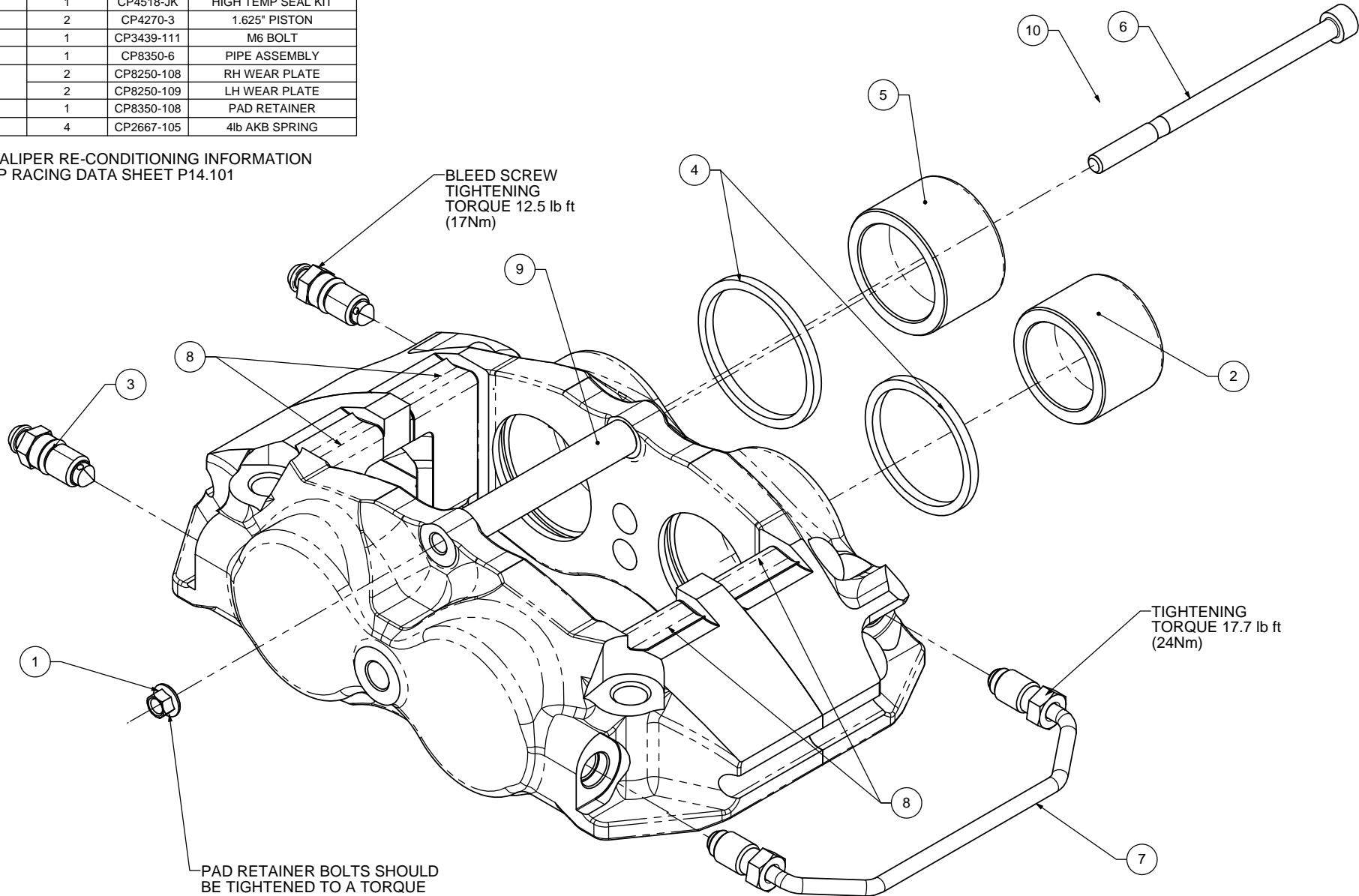
AP Racing  
Wheler Road  
Coventry  
CV3 4LB  
Tel: +44 024 7663 9595  
Fax: +44 024 7663 9559  
e-mail: sales@apracing.co.uk  
Web site: HTTP://www.apracing.com

© AP Racing Ltd. 2005

Last Saved: athenas on 02 October 2012 11:10:25

SPARE PARTS LIST			
REF	QTY / CALIPER	PART No.	DESCRIPTION
1	1	CP3423-107	M6 NUT
2	2	CP3215-113	1.500" PISTON
3	1	CP3880-1	BLEEDSCREW & ORING KIT
4	1	CP4518-JK	HIGH TEMP SEAL KIT
5	2	CP4270-3	1.625" PISTON
6	1	CP3439-111	M6 BOLT
7	1	CP8350-6	PIPE ASSEMBLY
8	2	CP8250-108	RH WEAR PLATE
	2	CP8250-109	LH WEAR PLATE
9	1	CP8350-108	PAD RETAINER
10	4	CP2667-105	4lb AKB SPRING

FOR CALIPER RE-CONDITIONING INFORMATION SEE AP RACING DATA SHEET P14.101



Issue No.	Alterations		
	Date & No.	Particulars	Zone / Initials
-	-	SEE SHEET 1 FOR ISSUE INFORMATION.	-

SCALE 2:1	SHEET 2 OF 2
DRAWN	Chris Arrowsmith
APPROVED	
DERIVED FROM	
TITLE	
4 POT, 152.0 x 39.8 RADIAL MTG CALIPER ASSEMBLY	
DRG NO.	CP8350-1CD