

A0 INSTALLATION DRAWING

IF THIS DOCUMENT IS PRINTED IN HARD COPY, IT IS FOR INFORMATION USE ONLY AND THEREFORE IS NOT SUBJECT TO UPDATING CONTROLS. ALWAYS REFER TO SOLIDWORKS VIEWER FOR LATEST ISSUE



FIRST ANGLE PROJECTION

THIS DRAWING IS CONFIDENTIAL AND IS SUPPLIED ON THE EXPRESS CONDITION THAT IT SHALL NOT BE LOANED OR COPIED OR DISCLOSED TO ANY OTHER PERSON OR USED FOR ANY OTHER PURPOSE WITHOUT THE WRITTEN CONSENT OF AP RACING LTD.



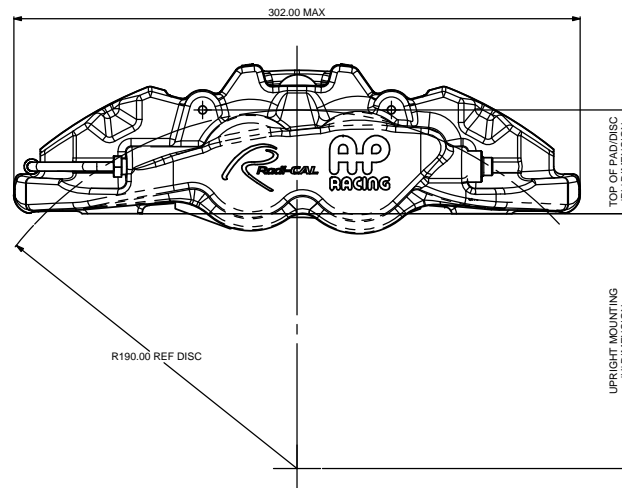
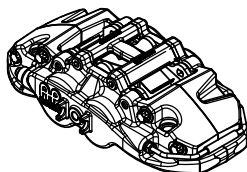
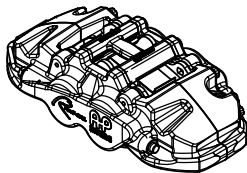
AP Racing
Wheler Road
Coventry
CV3 4LB

Tel: +44 024 7663 9595
Fax: +44 024 7663 9599
e-mail: sales@apracings.co.uk

© AP Racing Ltd. 2005
Web site: HTTP://www.apracings.com

CALIPER SPECIFICATION

BORE SIZE	JK (38.10 x 41.30) (1.50 x 1.625")
PISTON AREA	24.8cm ²
DISC DIAMETER MAX	400.00
DISC THICKNESS MAX	32.00
DISC THICKNESS MIN (WORN CONDITION)	30.00 (DIFFERENTIAL WEAR NOT TO EXCEED 0.50mm SIDE TO SIDE)
WORKING PRESSURES	SEE DATA SHEET P14.297 (AVAILABLE FROM AP RACING TECHNICAL DEPT)
HYDRAULIC FEED	M10 x 1.0
DRY WEIGHT (LESS PADS)	3.35kg
PAD FAMILY	CP6600
EFFECTIVE RADIUS (ON DIAMETER 380.00 DISC)	163.50
PL' DIMENSION	55.00
OFFSET 'C' DIMENSION	36.00
MOUNTING HOLE CENTRES 'D' DIMENSION	195.00
PAD FRICTION MATERIAL	2.50
MIN THICKNESS	
PAD RETENTION	2 x FRICTION RETAINED PINS
TIGHTENING TORQUES	BLEED SCREW: 17Nm HYDRAULIC FEED: 25Nm H-PIECE RETAINER: 27.1Nm
CORROSION PROTECTION	FLUID RESISTANT PAINT FINISH ALUMINIUM BODY BOOT TYPE DIRT SEALS

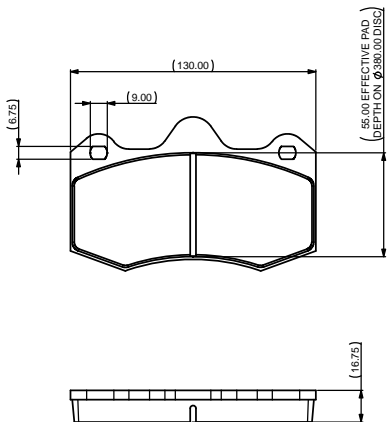


CALIPER POSITIONING

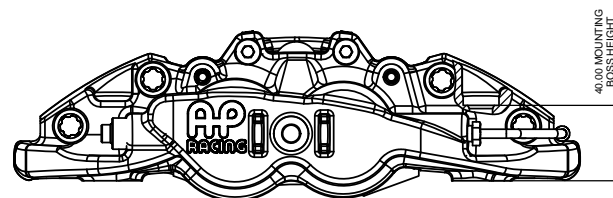
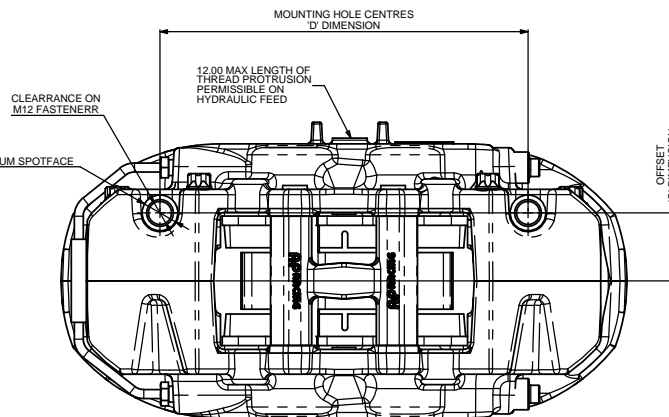
RHT	RIGHT HAND TRAILING (BEHIND AXLE)
LHT	LEFT HAND TRAILING (BEHIND AXLE)
RHL	RIGHT HAND LEADING (IN FRONT OF AXLE)
LHL	LEFT HAND LEADING (IN FRONT OF AXLE)

PART NUMBERING CONVENTION

PART NUMBER	DESCRIPTION
CP8530-2S0	RHT - SIDE FEED - NO ANTI KNOCK BACK SPRINGS
CP8530-3S0	LHT - SIDE FEED - NO ANTI KNOCK BACK SPRINGS
CP8530-4S0	RHL - SIDE FEED - NO ANTI KNOCK BACK SPRINGS
CP8530-5S0	LHL - SIDE FEED - NO ANTI KNOCK BACK SPRINGS



CP6600 PAD FAMILY
PAD AREA (MAX) 64.6cm²



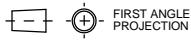
Alterations		Date & No.	Particulars	Zone	Issue
1		4/6/13 R3726	FIRST ISSUE		01
2		29/1/14 R3726	H-PIECE RETAINER TORQUE ADDED: Ø380.00 AND Ø345.00 RADIAL PROFILE UPDATED.		L4 01

SCALE 1:1	SHEET 1 OF 2
DRAWN OLIVER MOORE	
APPROVED	
DERIVED FROM	
TITLE	
4 PISTON CALIPER INSTALLATION DRAWING	
Ø400.00mm x 32.00mm MAX DISC (JK BORES)	
DRG NO.	CP8530-2-5S0_CD

FOR INSTALLED PROFILES SEE SHEET 2

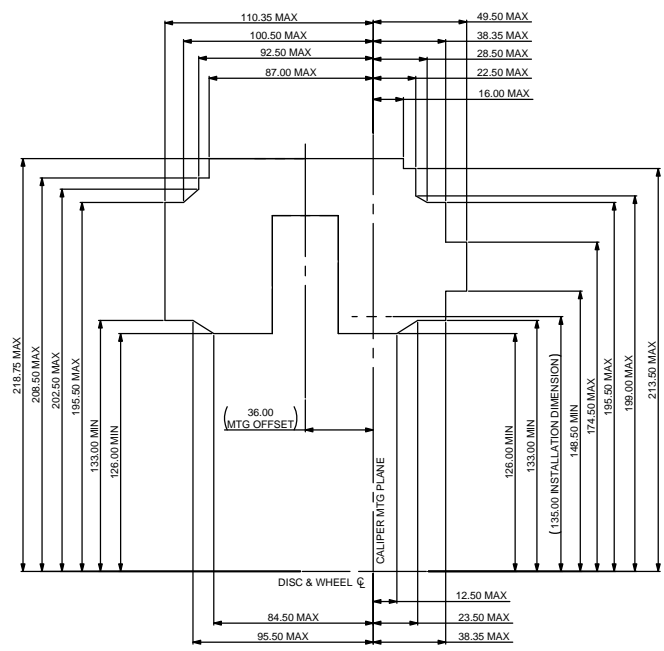
A0 INSTALLATION DRAWING

IF THIS DOCUMENT IS PRINTED IN HARDCOPY, IT IS FOR INFORMATION USE ONLY AND THEREFORE IS NOT SUBJECT TO UPDATING CONTROLS. ALWAYS REFER TO SOLIDWORKS VIEWER FOR LATEST ISSUE

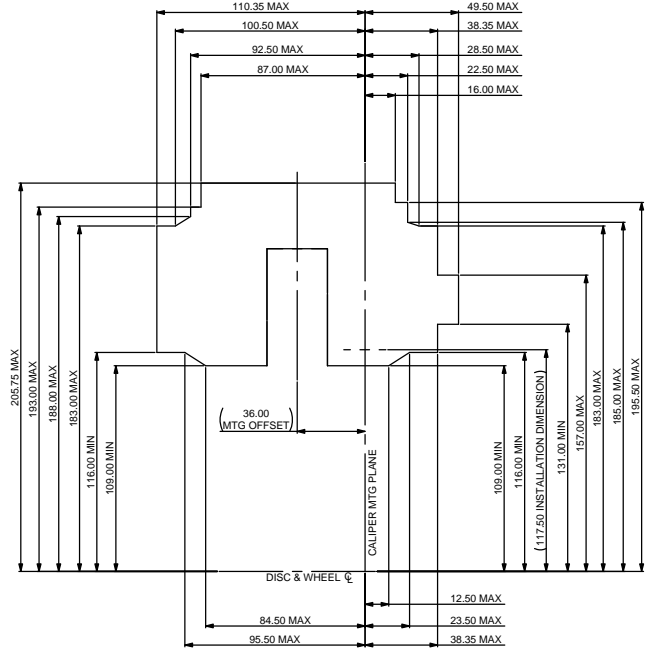


THIS DRAWING IS CONFIDENTIAL AND IS SUPPLIED ON THE EXPRESS CONDITION THAT IT SHALL NOT BE LOANED OR COPIED OR DISCLOSED TO ANY OTHER PERSON OR USED FOR ANY OTHER PURPOSE WITHOUT THE WRITTEN CONSENT OF AP RACING LTD.

AP RACING
 AP Racing
 Wheeler Road
 Coventry
 CV3 4LB
 Tel: +44 (0)24 7663 9595
 Fax: +44 (0)24 7663 9599
 e-mail: sales@apracings.co.uk
 © AP Racing Ltd. 2005
 Web site: HTTP://www.apracings.com



CALIPER INSTALLED PROFILE ON ϕ 380.00 x 32.00 DISC



CALIPER INSTALLED PROFILE ON ϕ 345.00 x 32.00 DISC

Alterations		Particulars	Zone	Index
Date & No.				
09/02		SEE SHEET 1 FOR ISSUE INFORMATION.		

SCALE 1:1 SHEET 2 OF 2
 DRAWN OLIVER MOORE
 APPROVED
 DERIVED FROM
 TITLE
 4 PISTON CALIPER INSTALLATION DRAWING
 ϕ 380.00 x 32.00 MAX DISC (JK BORES)
 DRG NO. CP8530-2-5S0_CD