

**B1** ASSEMBLY DRAWING

IF THIS DOCUMENT IS PRINTED IN HARDCOPY, IT IS FOR INFORMATION USE ONLY AND THEREFORE IS NOT SUBJECT TO UPDATING CONTROLS. ALWAYS REFER TO SOLIDWORKS VIEWER FOR LATEST ISSUE

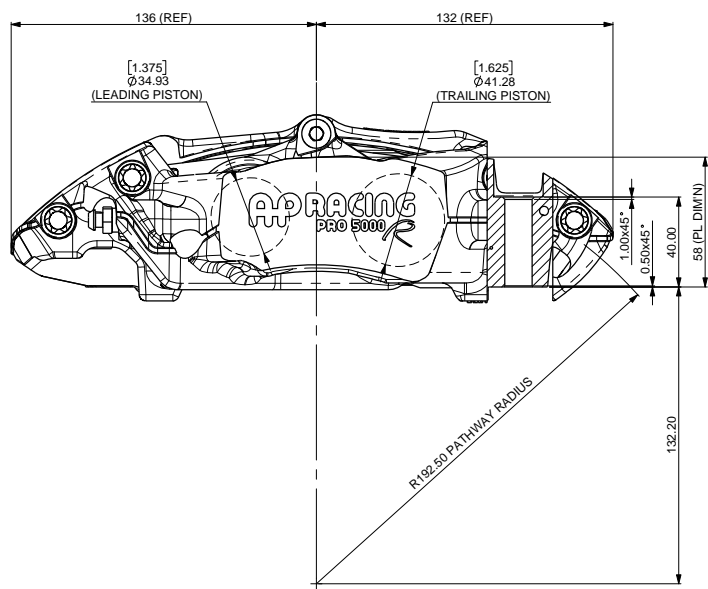
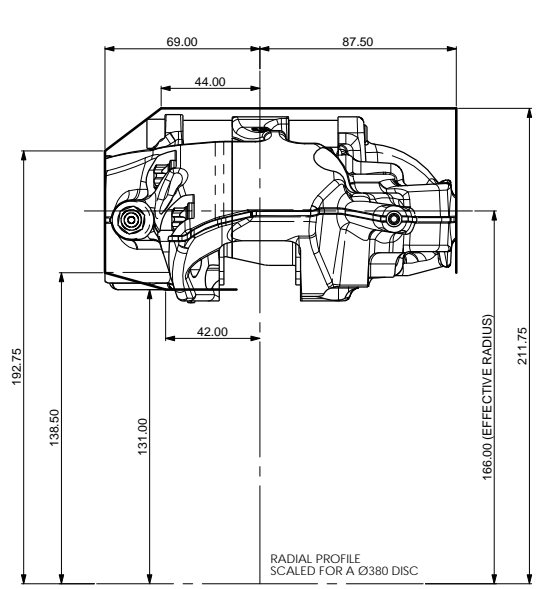


FIRST ANGLE PROJECTION

THIS DRAWING IS CONFIDENTIAL AND IS SUPPLIED ON THE EXPRESS CONDITION THAT IT SHALL NOT BE LOANED OR COPIED OR DISCLOSED TO ANY OTHER PERSON OR USED FOR ANY OTHER PURPOSE WITHOUT THE WRITTEN CONSENT OF AP RACING LTD.



AP Racing  
Wheler Road  
Coventry  
CV3 4LB  
Tel: +44 024 7663 9595  
Fax: +44 024 7663 9559  
e-mail: sales@apracings.co.uk  
Web site: HTTP://www.apracings.com



**GENERAL DESCRIPTION**  
THIS 4 PISTON DIFFERENTIAL BORE CALIPER TO SUIT UP TO Ø380 IRON DISC WITH A THICKNESS OF 28-32mm.

**APPLICATION**  
GENERAL USE CALIPER.

**TECHNICAL INFORMATION**  
TOTAL PISTON AREA: 45.6cm<sup>2</sup>  
BODY MATERIAL: ALUMINIUM ALLOY  
PISTON MATERIAL: STAINLESS STEEL

ASSEMBLY WEIGHT (LESS PADS): 2.23Kg  
MINIMUM DISC & PAD STACK: 40MM

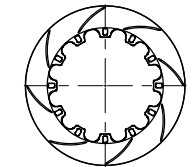
**INSTALLATION INFORMATION**  
DISC & CALIPER MOUNTING TOLERANCES TO BE SUCH THAT THE DISC IS CENTRAL TO THE CALIPER TO WITHIN ±0.5mm.  
DISC DIAMETRAL CLEARANCE SHOULD BE 2.5mm NOMINAL FROM DISC O/D TO PATHWAY.

**KEY TO DIMENSIONS**  
'PL' DIMN - TOP OF PAD MATERIAL TO MOUNTING FACE.  
'U' DIMN - WHEEL CENTRE LINE TO CALIPER MOUNTING FACE = (DISC Ø/2) - PL DIMN

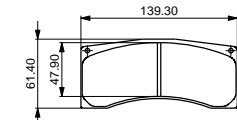
AP RACING TECHNICAL SECTION WILL BE PLEASED TO ADVISE ON THE MOST SUITABLE EQUIPMENT FOR ANY PARTICULAR APPLICATION.

**CALIPER PART NUMBERS**  
CP9446-2S4L - RIGHT HAND  
CP9446-3S4L - LEFT HAND

**RECOMMENDED DISC AND PAD OPTIONS AVAILABLE**  
D48 DISC AND PAD COMBINATION



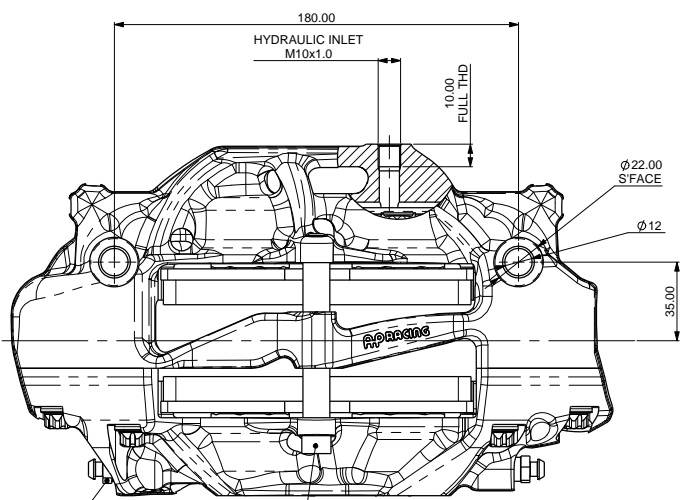
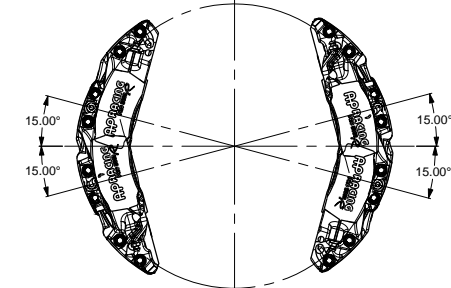
CP5772-1128/9GA Ø356x32 12F 72V 5.98Kg  
SEE CUSTOMER DRAWING FOR FULL DETAIL



CP6820D48 PAD FAMILY  
PAD THICKNESS - 16mm  
PAD AREA - 63.20cm<sup>2</sup>  
PAD VOLUME - 101.12cm<sup>3</sup>

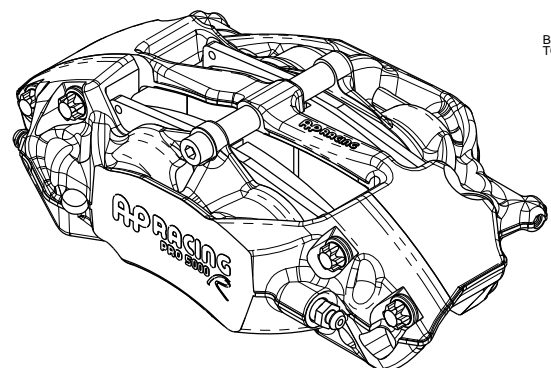
**OPTIMUM BLEED POSITIONING**

FOR OPTIMUM BLEED, THE CALIPER SHOULD BE INSTALLED IN THE LEADING OR TRAILING POSITION BETWEEN THE ANGLES SHOWN



BLEED SCREW TIGHTENING  
TORQUE 17.0 Nm (12.5 Lbs ft)

PAD RETAINING BOLT SHOULD BE  
TIGHTENED TO A TORQUE OF 19Nm  
(14lb ft)



Issue No.	Alterations		
	Date & No.	Particulars	Zone / Initials
1A	16/06/16 B7479	FIRST ISSUE	# NJS
1B	17/07/2017 B7726.01	CHANGED TORQUE SPECIFICATION NOTE	C10 SGW

SCALE 1:1	SHEET 1 OF 2
DRAWN N STEVENS	
APPROVED	
DERIVED FROM	
TITLE 4 POT PRO5000 R CALIPER INSTALLATION	
DRG NO. CP9446-1CD	

**B1 ASSEMBLY DRAWING**

IF THIS DOCUMENT IS PRINTED IN HARDCOPY, IT IS FOR INFORMATION USE ONLY AND THEREFORE IS NOT SUBJECT TO UPDATING CONTROLS. ALWAYS REFER TO SOLIDWORKS VIEWER FOR LATEST ISSUE

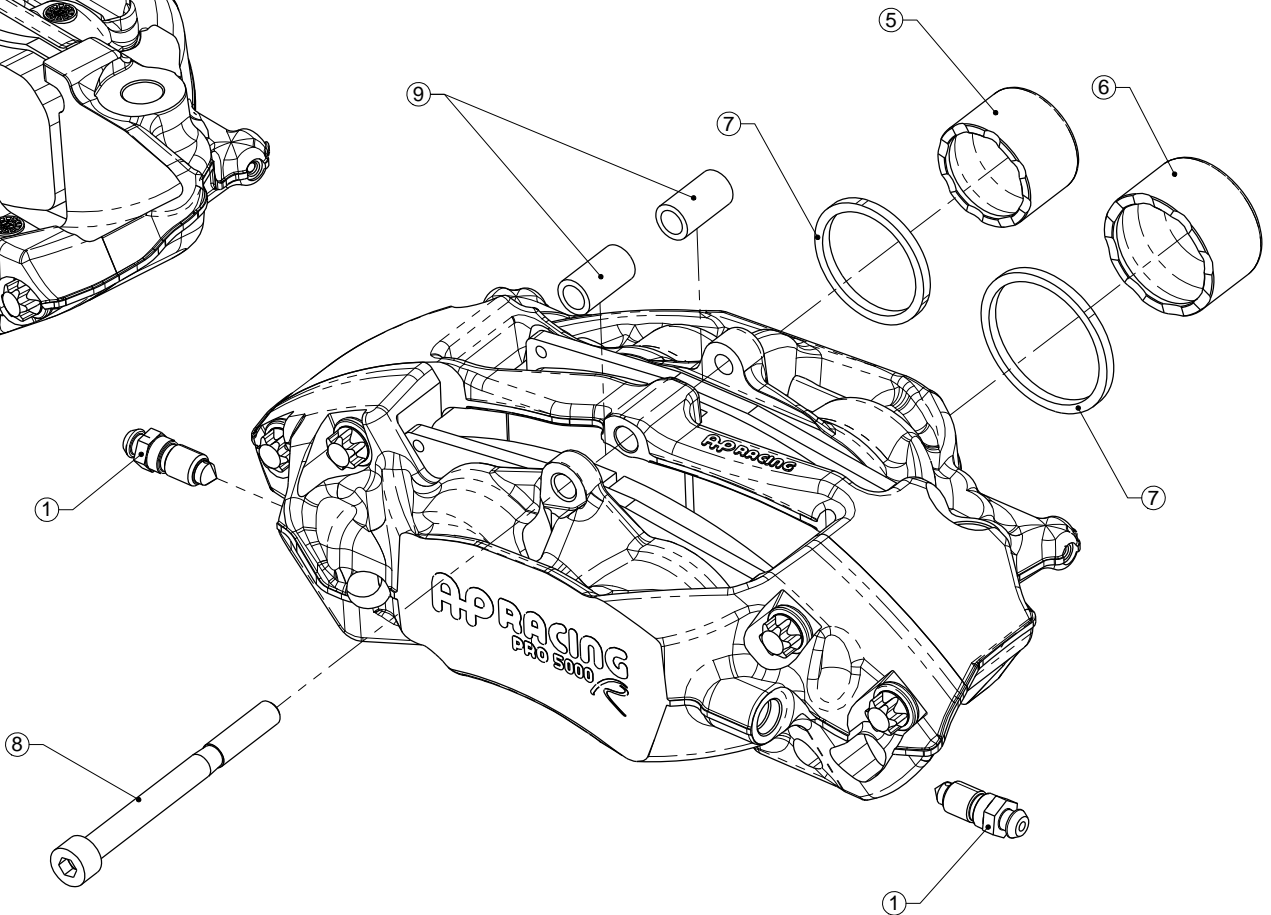
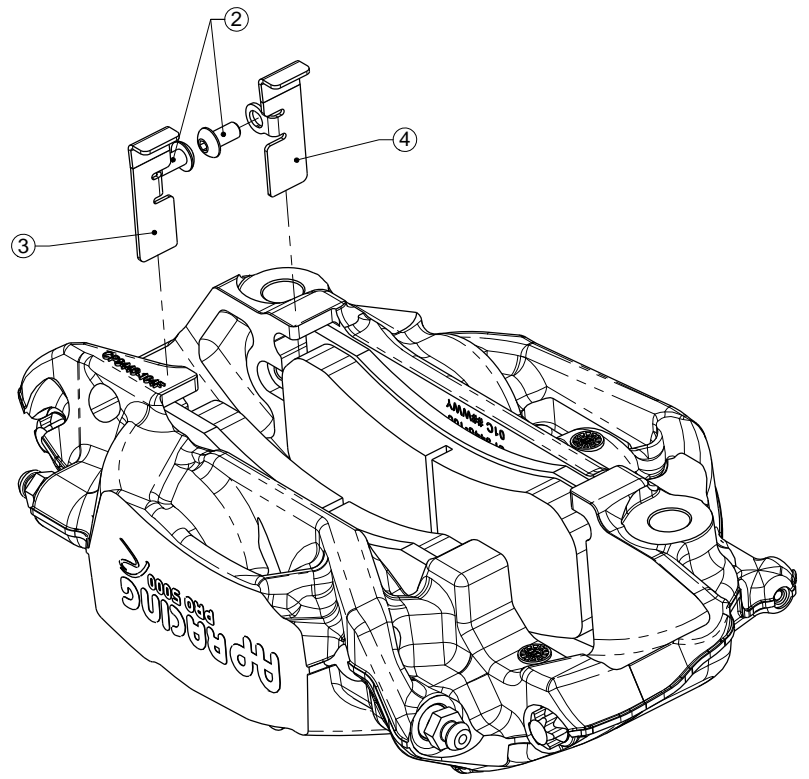


THIS DRAWING IS CONFIDENTIAL AND IS SUPPLIED ON THE EXPRESS CONDITION THAT IT SHALL NOT BE LOANED OR COPIED OR DISCLOSED TO ANY OTHER PERSON OR USED FOR ANY OTHER PURPOSE WITHOUT THE WRITTEN CONSENT OF AP RACING LTD.



**AP Racing**  
Wheler Road  
Coventry  
CV3 4LB  
Tel: +44 024 7663 9595  
Fax: +44 024 7663 9559  
e-mail: sales@apracings.co.uk  
Web site: HTTP://www.apracings.com

REF	PART NUMBER	DESCRIPTION	QTY / CALIPER	FITTING NOTES
1	CP3880-1	M10 BLEED SCREW KIT	2	TIGHTENING TORQUE - 17Nm
2	CP9440-116	M5 BUTTON SCREW	2	APPLY A 1-2MM DROP OF LOCTITE 270 TO THE 2ND FROM LAST THREAD WHEN FITTING. TIGHTENING TORQUE - 3.7Nm
3	CP9446-110	RH WEARPLATE	1	APPLY 736 RTV SILICONE SPARINGLY BEHIND THE ABUTMENT PLATE ENSURING ENTIRE CONTACT FACE IS COVERED.
4	CP9446-111	LH WEARPLATE		APPLY PRESSURE TO ABUTMENT PLATE WHEN FITTING TO ENSURE MINIMUM FILM THICKNESS AND AVOID ANY GAP.
5	CP9444-110	Ø1 3/8" SST PISTON	2	ENSURE ABUTMENT PLATE SITS CORRECTLY AGAINST CALIPER BODY BEFORE FITTING RETAINING SCREW.
6	CP9444-111	Ø1 5/8" SST PISTON	2	
7	CP8518-GK	PISTON SEAL KIT	1	REFER TO PUBLICATION REF: P14.290 & P14.220
8	CP3596-112ST	M8 CAP SCREW	1	TIGHTENING TORQUE - 13.1Nm
9	CP9440-110	PAD RETAINER TUBE	2	



Issue No.	Alterations		
	Date & No.	Particulars	Zone / Initials
-	-	SEE SHEET 1 FOR ISSUE INFORMATION.	-

SCALE 1.5:1 SHEET 2 OF 2

DRAWN N STEVENS

APPROVED

DERIVED FROM

TITLE  
4 POT PRO5000 R  
CALIPER INSTALLATION

DRG NO. CP9446-1CD