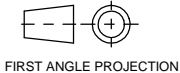


PUBLICATION P12.183

If this document is printed in hardcopy, it is for information use only and therefore is not subject to updating controls. Always refer to viewer for latest issue.



FIRST ANGLE PROJECTION

THIS DRAWING IS CONFIDENTIAL AND IS SUPPLIED ON THE EXPRESS CONDITION THAT IT SHALL NOT BE LOANED OR COPIED OR DISCLOSED TO ANY OTHER PERSON OR USED FOR ANY OTHER PURPOSE WITHOUT THE WRITTEN CONSENT OF AP RACING LTD.



© AP Racing Ltd. 2004

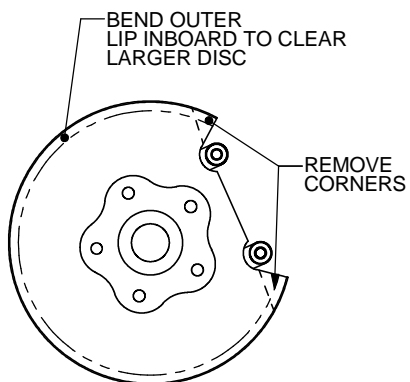
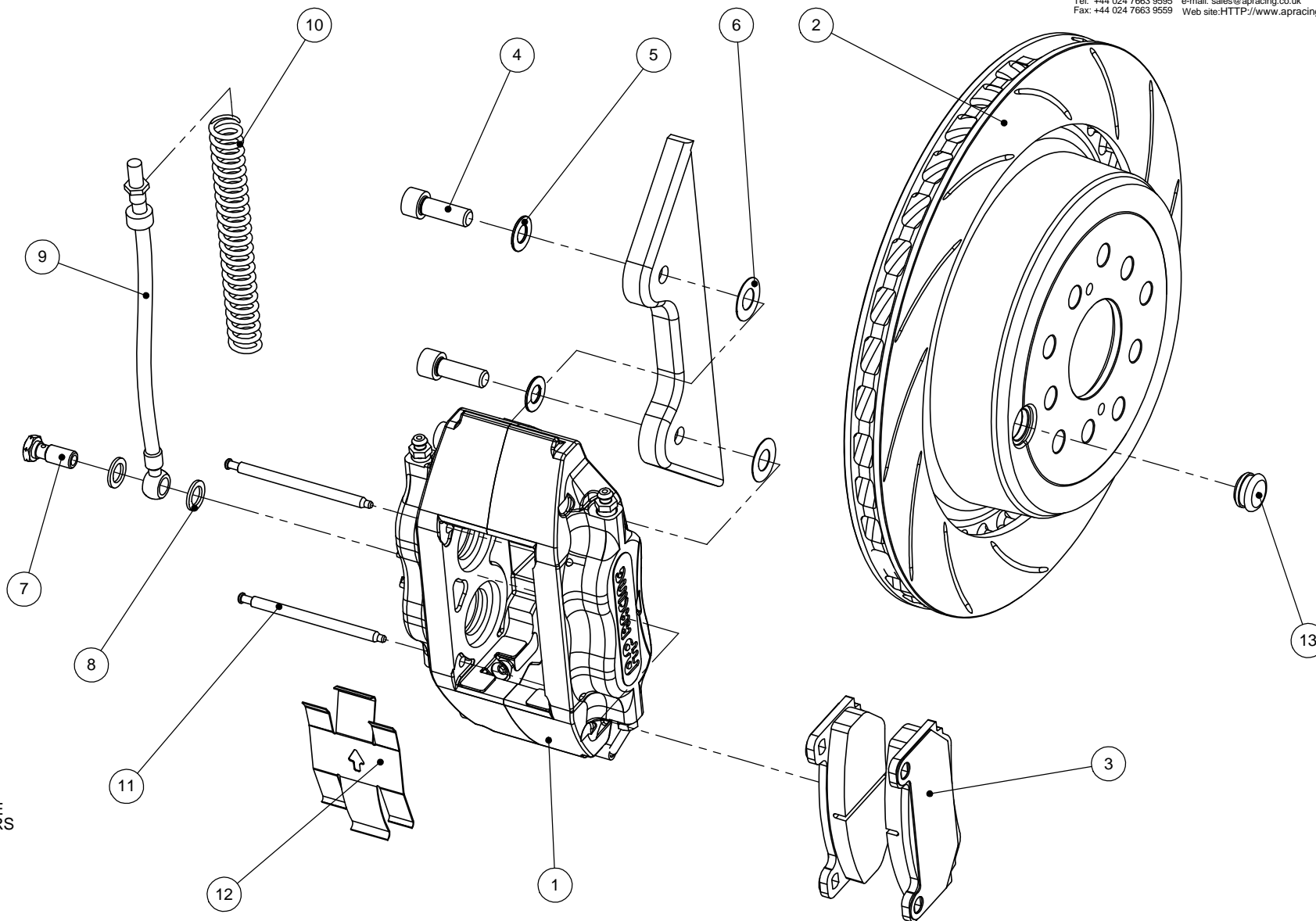
AP Racing
Wheler Road
Coventry
CV3 4LB

Tel: +44 024 7663 9595 e-mail: sales@ap racing.co.uk
Fax: +44 024 7663 9559 Web site: HTTP://www.ap racing.com

SUBARU IMPREZA REAR KIT NUMBER CP7625-1000R2:CG12		
Ref	Description	QTY
1	Caliper Right Hand	1
	Caliper Left Hand	1
2	Disc Right Hand	1
	Disc Left Hand	1
3	Pad Set	1
4	Bracket Mtg Bolt	4
5	Washer	4
6	0.5mm Washer/Shim	12
7	Banjo Bolt	2
8	Gasket	4
9	Hose kit	2
10	Nylon Armour	2
11	Pad Retainer Pin	4
12	Anti-Rattle Clip	2
13	Blanking Gromet	2

BRAKE DISC WEAR	
NEW	MIN WORN
24.00mm	23.00mm

Tightening Torques	
Part Ref #	Torque
Bolt Ref 4	58NM
Banjo Bolt Ref 7	25NM
Caliper Bleed Screw	17NM



SPLASH GUARD
MODIFICATION

**PLEASE RETAIN THIS SHEET
FOR FUTURE REFERENCE**

THIS IS A PICTORIAL VIEW FOR REFERENCE ONLY. SOME PARTS MAY VARY FROM THOSE SUPPLIED. AP RACING RESERVE THE RIGHT TO CHANGE COMPONENTS WITHOUT PRIOR NOTICE

Comments
Illustration of right hand assembly. Check caliper is central over disc, Use 0.5mm shims (Part ref 6) to adjust if required.