

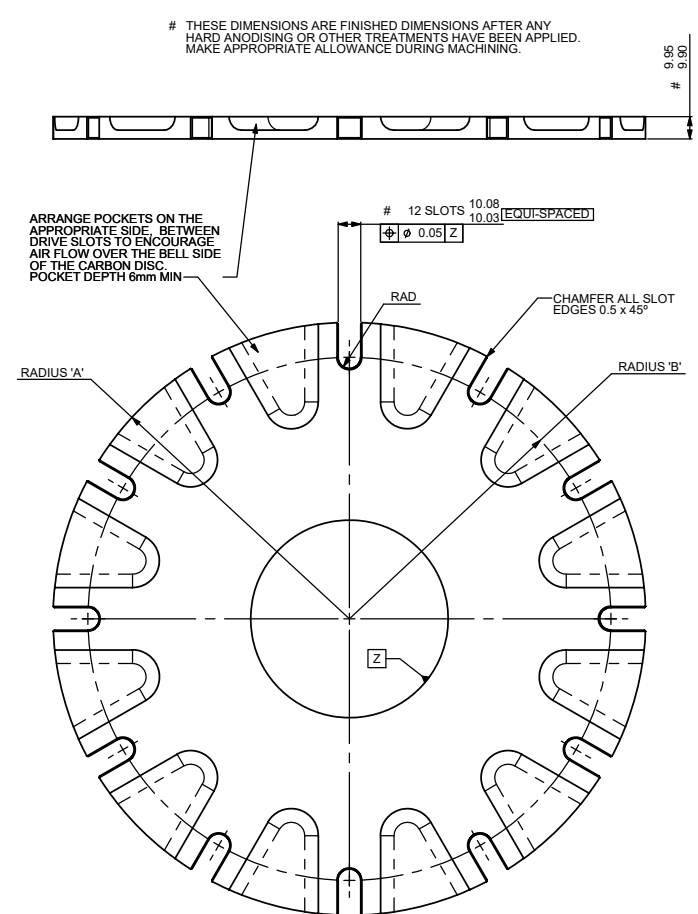
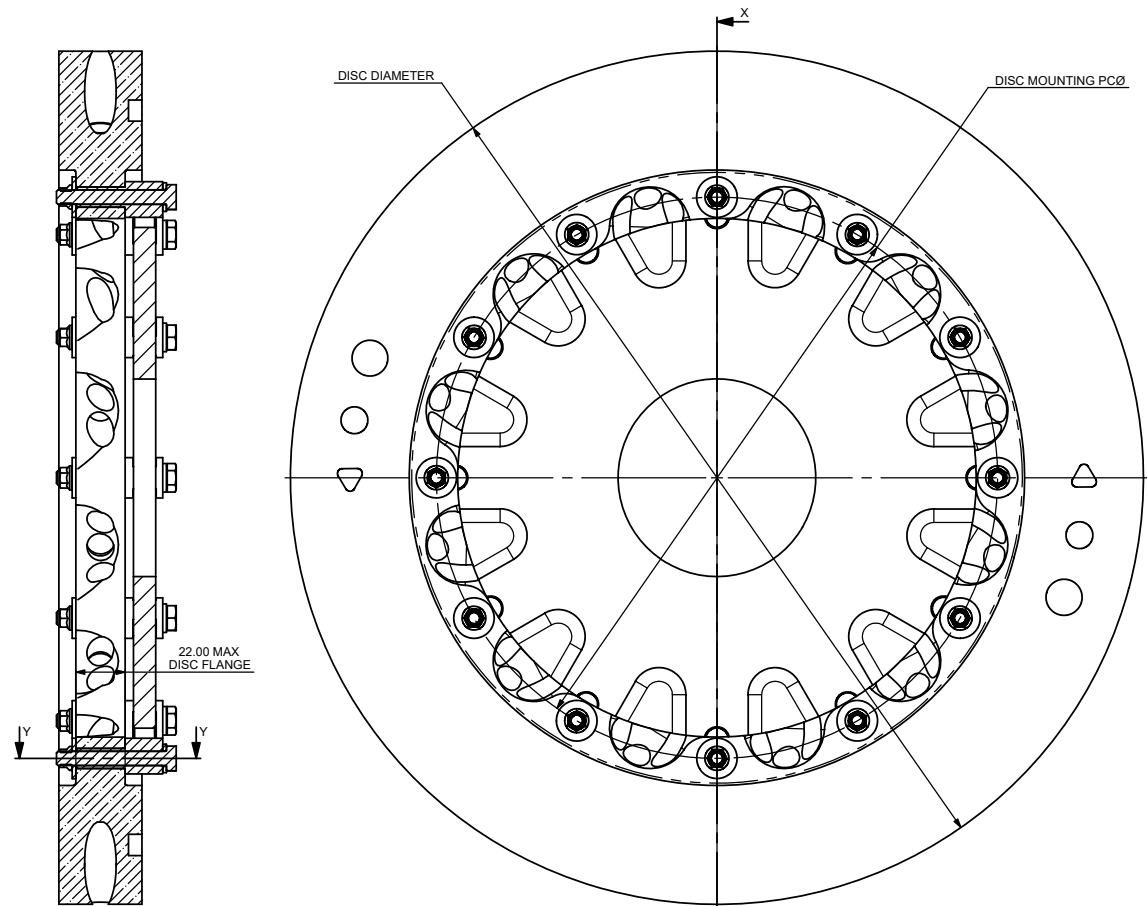
# A1 INSTALLATION DRAWING

IF THIS DOCUMENT IS PRINTED IN HARDCOPY, IT IS FOR INFORMATION USE ONLY AND THEREFORE IS NOT SUBJECT TO UPDATING CONTROLS. ALWAYS REFER TO SOLIDWORKS VIEWER FOR LATEST ISSUE

FIRST ANGLE PROJECTION

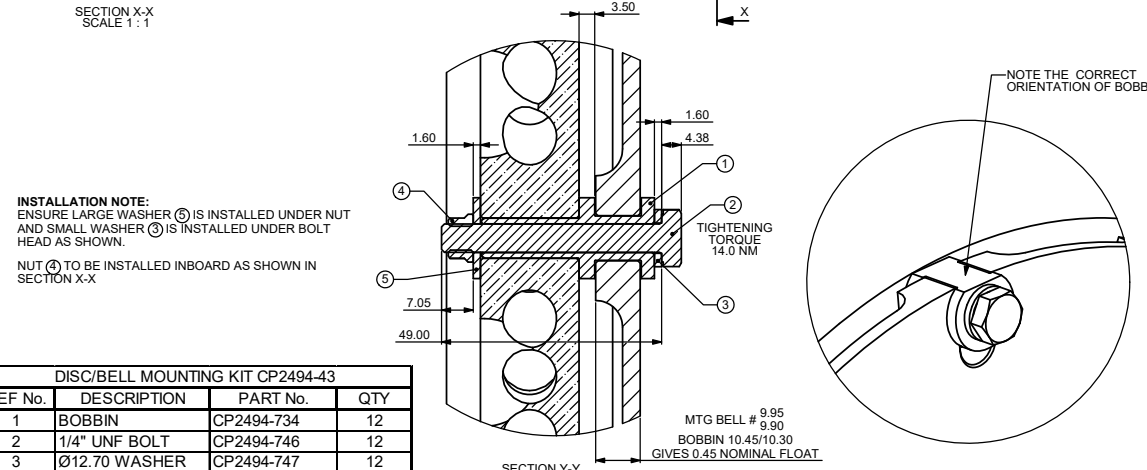
THIS DRAWING IS CONFIDENTIAL AND IS SUPPLIED ON THE EXPRESS CONDITION THAT IT SHALL NOT BE LOANED OR COPIED OR DISCLOSED TO ANY OTHER PERSON OR USED FOR ANY OTHER PURPOSE WITHOUT THE WRITTEN CONSENT OF AP RACING LTD.

**AP RACING**  
 AP Racing Ltd. 2005  
 Coventry CV3 4LB  
 Tel: +44 024 7663 9595  
 Fax: +44 024 7663 9599  
 e-mail: sales@apracings.co.uk  
 Web site: HTTP://www.apracings.com



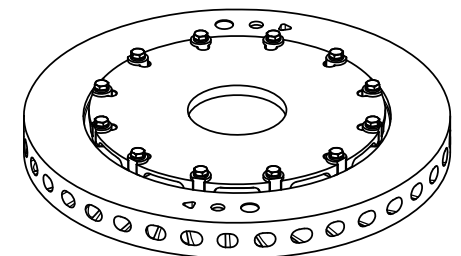
DETAIL SHOWING CRITICAL BELL DIMENSIONS TO SUIT AP RACING BOBBINS SUPPLIED IN DISC/BELL MOUNTING KIT CP2494-43. ALL OTHER DIMENSIONS ARE AT THE DISCRETION OF THE CUSTOMER

BELL DATA			
DISC Ø	DISC MOUNTING PCØ	RADIUS 'A'	RADIUS 'B'
380.0	250.0	132.0 ± 0.15	116.5 ± 0.15
355.0	225.0	119.5 ± 0.15	104.0 ± 0.15
340.0	225.0	119.5 ± 0.15	104.0 ± 0.15



**INSTALLATION NOTE:**  
 ENSURE LARGE WASHER (5) IS INSTALLED UNDER NUT AND SMALL WASHER (3) IS INSTALLED UNDER BOLT HEAD AS SHOWN.  
 NUT (4) TO BE INSTALLED INBOARD AS SHOWN IN SECTION X-X

DISC/BELL MOUNTING KIT CP2494-43			
REF No.	DESCRIPTION	PART No.	QTY
1	BOBBIN	CP2494-734	12
2	1/4" UNF BOLT	CP2494-746	12
3	Ø12.70 WASHER	CP2494-747	12
4	NUT (HIGH TEMP)	CP2494-748	12
5	Ø18.00 WASHER	CP5390-123CR3	12



# THESE DIMENSIONS ARE FINISHED DIMENSIONS AFTER ANY HARD ANODISING OR OTHER TREATMENTS HAVE BEEN APPLIED. MAKE APPROPRIATE ALLOWANCE DURING MACHINING.

Issue No.	Alterations		Zone	Initials
	Date & No.	Particulars		
1	05/01/06 B4436	FIRST ISSUE		DRA
2	28/06/06 B4567	DIMENSIONS ADDED TO SECTION Y-Y		CDA
3	11/09/08 B5278	SHEET 2 ADDED		SAT
4	13/09/10 B5466	BOLTLESS BOBBIN INSTALLATION ADDED		SAT
5	18/11/10	DISC FLANGE DIM 22.00 MAX ADDED TO SHT 1 & 2 SHT2 WEIGHT SAVING '564g' WAS 'OVER 500g'		SAT
6	21/04/17 B7754_01	CP5390-123CR3 WASHER ADDED BOLT ORIENTATION REVERSED		B2 C6 DW
7	12/07/17 B7754_03	BOLTLESS BOBBIN SHEET 2 REMOVED		DW

SCALE 2:1 SHEET 1 OF 2  
 DRAWN D.AROWSMITH  
 APPROVED  
 DERIVED FROM  
 TITLE  
**GT CARBON DISC INSTALLATION DRAWING**  
 DRG NO. CP2872-1000CD

# A1 INSTALLATION DRAWING

IF THIS DOCUMENT IS PRINTED IN HARDCOPY, IT IS FOR INFORMATION USE ONLY AND THEREFORE IS NOT SUBJECT TO UPDATING CONTROLS. ALWAYS REFER TO SOLIDWORKS VIEWER FOR LATEST ISSUE



THIS DRAWING IS CONFIDENTIAL AND IS SUPPLIED ON THE EXPRESS CONDITION THAT IT SHALL NOT BE LOANED OR COPIED OR DISCLOSED TO ANY OTHER PERSON OR USED FOR ANY OTHER PURPOSE WITHOUT THE WRITTEN CONSENT OF AP RACING LTD.



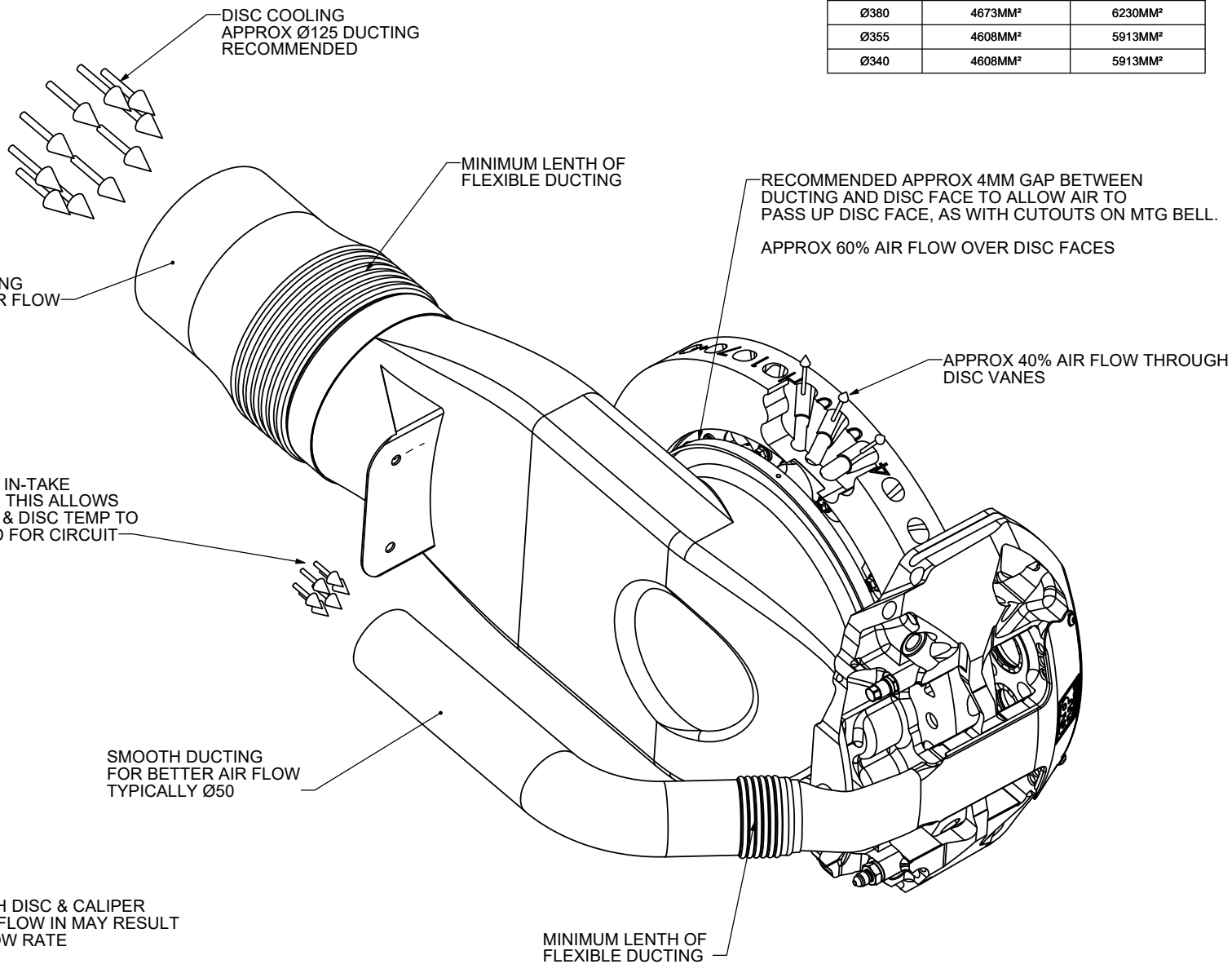
AP Racing  
Wheler Road  
Coventry  
CV3 4LB

Tel: +44 (0) 24 7663 9595  
Fax: +44 (0) 24 7663 9556  
e-mail: [engineering@apracings.com](mailto:engineering@apracings.com)  
Web site: <http://www.apracings.com>

© AP Racing Ltd. 2005

## EXAMPLE OF DISC AND CALIPER DUCTING

DISC DIA	MINIMUM CROSS SECTION THROUGH DISC VANES	MINIMUM CROSS SECTION DISC FACES
Ø380	4673MM <sup>2</sup>	6230MM <sup>2</sup>
Ø355	4608MM <sup>2</sup>	5913MM <sup>2</sup>
Ø340	4608MM <sup>2</sup>	5913MM <sup>2</sup>



Issue No.	Alterations		Zone	Initials
	Date & No.	Particulars		
		SEE SHEET 1 FOR DETAILS		

SCALE 2:3	SHEET 2 OF 2
DRAWN	DARROWSMITH
APPROVED	
DERIVED FROM	
TITLE	
GT CARBON DISC INSTALLATION DRAWING	
DRG NO.	CP2872-1000CD