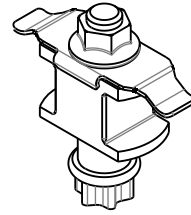
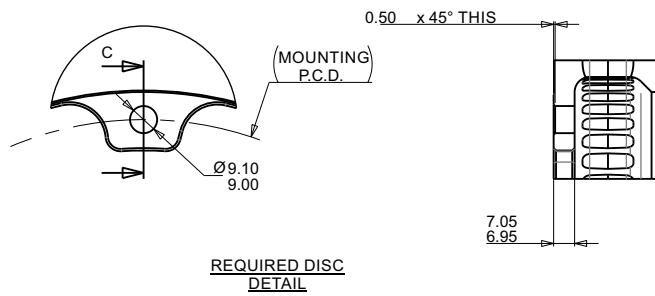
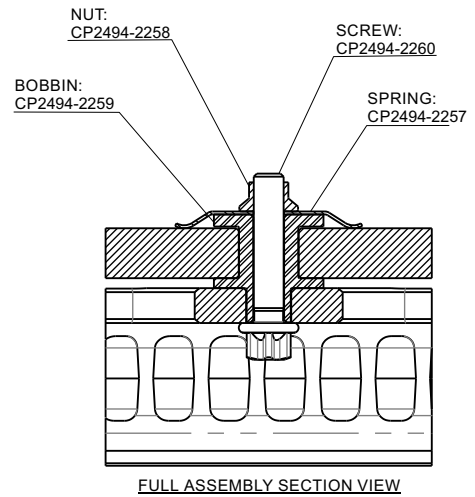


NOTE: ALL DIMENSIONS AFTER TREATMENT



BOBBIN ASSEMBLY
NOTE: SPRING TAB IS AWAY FROM
ASSEMBLY AVAILABLE IN O.D. ORIENTATED
ASSY REF PARTS AREA



TIGHTENING TORQUE = 6.5Nm + 30° turn
NOTE: tightening (torque + angle must be done
in one continuous operation i.e. you don't tighten
to 6Nm stop and then tighten a further 30°