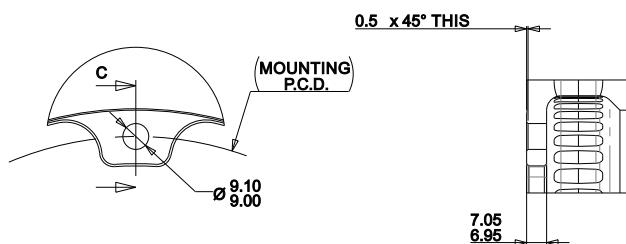
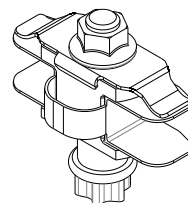


REQUIRED BELL DETAIL

DIMENSIONS AFTER TREATMENT



REQUIRED DISC DETAIL

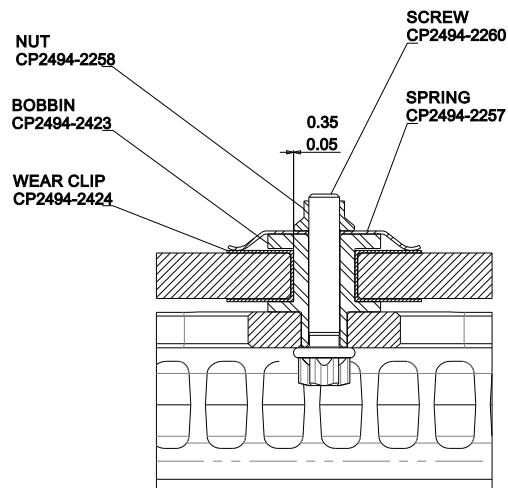


BOBBIN ASSEMBLY

NOTE; SPRING TAB IS ORIENTATED AWAY FROM O.D.

ASSEMBLY AVAILABLE IN ASSYREFPARTS AREA

SEE CP2494-2261 FOR NON-CLIPPED 'Y' BOBBIN



TIGHTENING TORQUE = 6.5Nm + 30° turn
NOTE: tightening (torque + angle must be done in one continuous operation i.e. you don't tighten to 6Nm stop and then tighten a further 30°