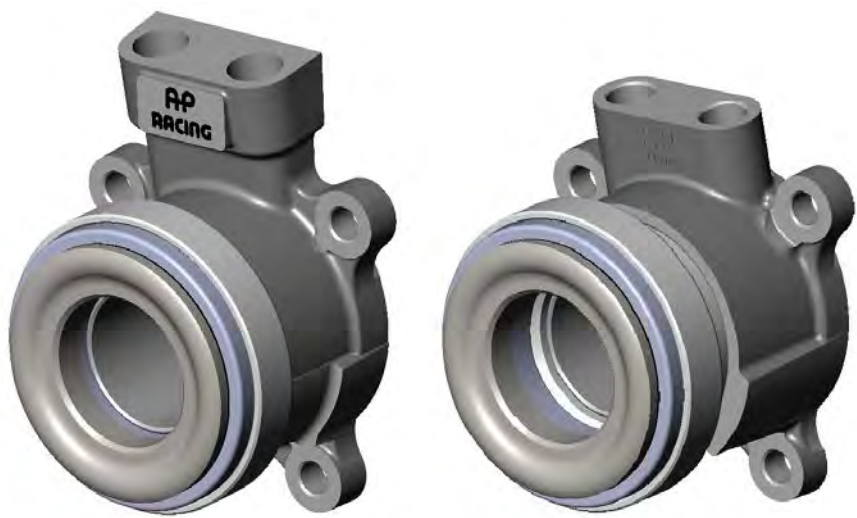
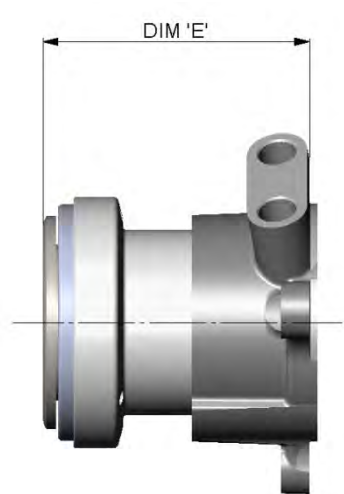
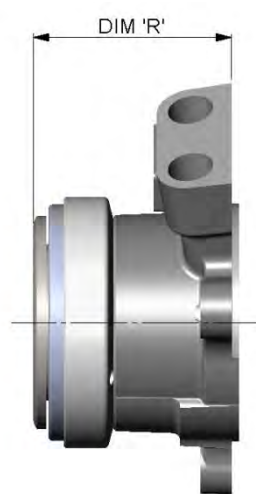
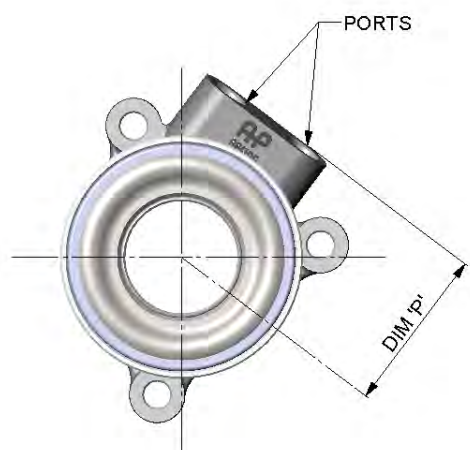
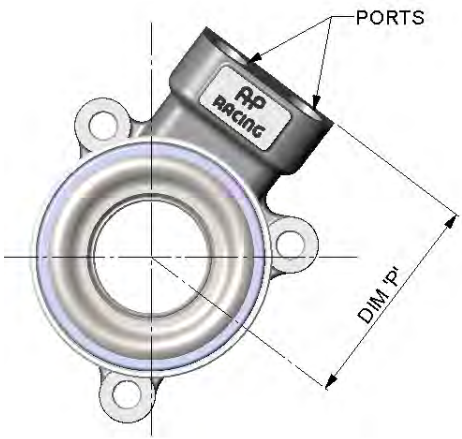


Product Update – CP6859 to replace CP3589 Concentric Push Type Slave Cylinder Assemblies



CP3859 Concentric Slave Cylinder Family CP6859 Concentric Slave Cylinder Family



Comparison of Significant Features

Feature	CP3859	CP6859
Body Material	Aluminium Alloy - Die Cast	Aluminium Alloy - Forged
Ports	M12 x 1.00	M10 x 1.0
Boss Length (DIM 'P')	59.2 ± 0.25 mm	44.9 ± 0.25 mm
Weight	See Installation Drawing CP3859-1CD	Around 5% Reduction (Depending upon Type) – See Installation Drawing CP6859-1CD
Slave Fully Retracted (DIM 'R')	See Installation Drawing CP3859-1CD	<u>No Change</u> – See Installation Drawing CP6859-1CD
Slave Fully Retracted (DIM 'E')	See Installation Drawing CP3859-1CD	<u>No Change</u> – See Installation Drawing CP6859-1CD
Mounting Features	See Installation Drawing CP3859-1CD	<u>No Change</u> – See Installation Drawing CP6859-1CD
All other features are the same.		

All CP3859 variants will have a CP6859 equivalent.

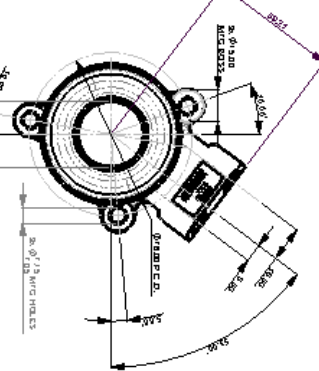
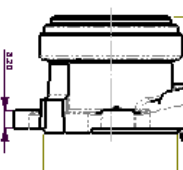
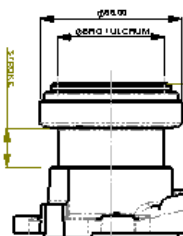
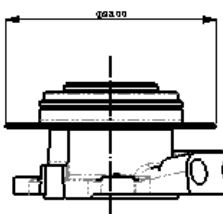
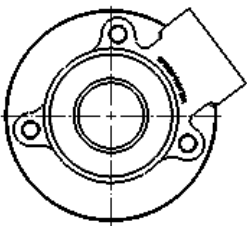
A1 INSTALLATION

THIS DRAWING IS FOR INFORMATION ONLY. THE INSTALLATION OF THIS PRODUCT SHOULD BE LEFT TO THE USER. FOR MORE INFORMATION, CONTACT THE USER'S LOCAL SALES REPRESENTATIVE.



THIS DRAWING IS COORDINATED AND SUPPLIED ON THE EXPRESS COORDINATION THAT THE USER WILL BE RESPONSIBLE FOR THE PROPER USE OF THE PRODUCT AND FOR THE PROPER INSTALLATION OF THE PRODUCT IN THE WORKING AREA.

AP Spring
Whitler Road
CVA 4LB

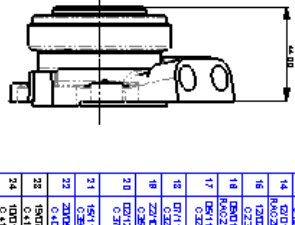
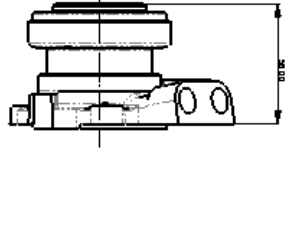
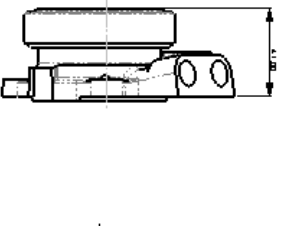
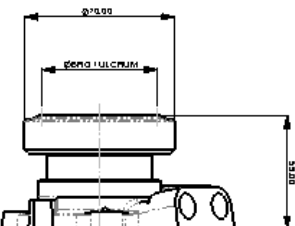
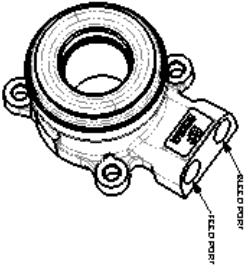


STANDARD CONFIGURATION (400 LITER OPTION)

THIS SLAVE CYLINDER FEATURE:
THE BEARING IS NOT USED IN THE PISTON VIA THE OUTER RACE
THE BEARING IS NOT USED IN THE PISTON VIA THE OUTER RACE
THE INNER RACE ENJOYABLE, SUITABLE FOR HIGH SPEED APPLICATIONS.

STANDARD CONFIGURATION (48mm STROKE)

THIS SLAVE CYLINDER FEATURE:
THE BEARING IS NOT USED IN THE PISTON VIA THE OUTER RACE
THE BEARING IS NOT USED IN THE PISTON VIA THE OUTER RACE
THE INNER RACE ENJOYABLE, SUITABLE FOR HIGH SPEED APPLICATIONS.



REDUCED LENGTH CONFIGURATION (42mm STROKE)

THIS SLAVE CYLINDER FEATURE:
THE BEARING IS NOT USED IN THE PISTON VIA THE OUTER RACE
THE BEARING IS NOT USED IN THE PISTON VIA THE OUTER RACE
THE INNER RACE ENJOYABLE, SUITABLE FOR HIGH SPEED APPLICATIONS.
ALL OTHER NO LITING DIMENSIONS REMAIN THE SAME.

CP 385-9-1238 IN - 1250 IN AND 1284 IN (12 mm STROKE)

THIS SLAVE CYLINDER FEATURE:
THE BEARING IS NOT USED IN THE PISTON VIA THE OUTER RACE
THE BEARING IS NOT USED IN THE PISTON VIA THE OUTER RACE
THE INNER RACE ENJOYABLE, SUITABLE FOR HIGH SPEED APPLICATIONS.
ALL OTHER NO LITING DIMENSIONS REMAIN THE SAME.

DESCRIPTION
THIS SLAVE CYLINDER ON A BENTON SLAVE CYLINDER IS A
LONG TRAVEL SLAVE CYLINDER. IT IS DESIGNED FOR
HIGH TRAVEL AND SPEEDS. ALL SLAVE SLAVES ARE
DESIGNED TO WORK TOGETHER TO MOVE A PISTON WITH
POWER. THIS IS THE ONLY SLAVE CYLINDER THAT CAN
MOVE A PISTON WITH POWER.

BOY MATERIAL: ALUMINUM ALLOY (AL7075-T6)
BEARING MATERIAL: ALUMINUM ALLOY (AL7075-T6)
PISTON MATERIAL: ALUMINUM ALLOY (AL7075-T6)
PISTON RINGS: STAINLESS STEEL (304)
PISTON PIN: STAINLESS STEEL (304)
PISTON PIN BUSHING: STAINLESS STEEL (304)
PISTON PIN SCREW: STAINLESS STEEL (304)
PISTON PIN WASHER: STAINLESS STEEL (304)
PISTON PIN NUT: STAINLESS STEEL (304)
PISTON PIN O-RING: NITRILE BUTADIENE RUBBER (NBR)

NOTE:
LARGER SIZE BEARING AVAILABLE FOR THE BEARING
IN THE SLAVE CYLINDER. CONTACT YOUR SALES
REPRESENTATIVE FOR MORE INFORMATION.
LARGER SIZE BEARING AVAILABLE FOR THE BEARING
IN THE SLAVE CYLINDER. CONTACT YOUR SALES
REPRESENTATIVE FOR MORE INFORMATION.

CONFIGURATION	SLAVE CYLINDER ASSEMBLY	Bore PLEASANT DIA.	FULL STROKE	REASSEMBLY BEARING SUB
STANDARD	CP385-9-1238	38.0 (1.496)	148.0 (5.827)	CP385-7-16
	CP385-9-1238	38.0 (1.496)	148.0 (5.827)	CP385-7-16
	CP385-9-1238	38.0 (1.496)	148.0 (5.827)	CP385-7-16
	CP385-9-1238	38.0 (1.496)	148.0 (5.827)	CP385-7-16
	CP385-9-1238	38.0 (1.496)	148.0 (5.827)	CP385-7-16
	CP385-9-1238	38.0 (1.496)	148.0 (5.827)	CP385-7-16
	CP385-9-1238	38.0 (1.496)	148.0 (5.827)	CP385-7-16
	CP385-9-1238	38.0 (1.496)	148.0 (5.827)	CP385-7-16
	CP385-9-1238	38.0 (1.496)	148.0 (5.827)	CP385-7-16
	CP385-9-1238	38.0 (1.496)	148.0 (5.827)	CP385-7-16

DWG NO.	CP385-9-1238
REV.	01
DATE	10/20/2018
BY	JLH
CHECKED	JLH
APPROVED	JLH
TITLE	CONCENTRIC SLAVE CYLINDER INSTALLATION DRAWING

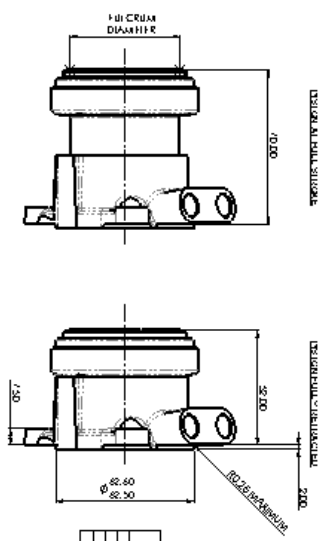
10/20/2018

A1 INSTALLATION DRAWING

THIS DOCUMENT IS PROVIDED AS INFORMATION ONLY. IT IS NOT INTENDED TO BE USED AS A SUBSTITUTE FOR THE ORIGINAL DRAWING. THE USER SHALL BE RESPONSIBLE FOR THE CORRECT USE OF THE INFORMATION PROVIDED HEREIN.

FIRST ANGLE PROJECTION

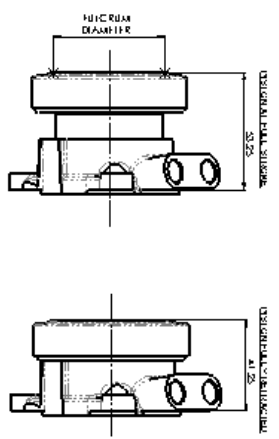
THIS DRAWING IS COORDINATED AND SUPPLIED BY THE EXPRESS COMPANY THAT IS RESPONSIBLE FOR THE DESIGN AND MANUFACTURE OF THE PRODUCT. THE USER SHALL BE RESPONSIBLE FOR THE CORRECT USE OF THE INFORMATION PROVIDED HEREIN.



STANDARD CONFIGURATION (80mm STROKE)

ASSEMBLY NUMBER	FLUCCUM DIAMETER	FLUCCUM STROKE	REFLECTOR BEARING SIZE
CP889-20	20.0 D.145.7	18.0 D.100.7	CP889-1.6
CP889-25	25.0 D.145.7	18.0 D.100.7	CP889-1.6
CP889-30	30.0 D.145.7	18.0 D.100.7	CP889-1.6
CP889-35	35.0 D.145.7	18.0 D.100.7	CP889-1.6
CP889-40	40.0 D.145.7	18.0 D.100.7	CP889-1.6
CP889-45	45.0 D.145.7	18.0 D.100.7	CP889-1.6
CP889-50	50.0 D.145.7	18.0 D.100.7	CP889-1.6
CP889-55	55.0 D.145.7	18.0 D.100.7	CP889-1.6
CP889-60	60.0 D.145.7	18.0 D.100.7	CP889-1.6
CP889-65	65.0 D.145.7	18.0 D.100.7	CP889-1.6
CP889-70	70.0 D.145.7	18.0 D.100.7	CP889-1.6
CP889-75	75.0 D.145.7	18.0 D.100.7	CP889-1.6
CP889-80	80.0 D.145.7	18.0 D.100.7	CP889-1.6
CP889-85	85.0 D.145.7	18.0 D.100.7	CP889-1.6
CP889-90	90.0 D.145.7	18.0 D.100.7	CP889-1.6
CP889-95	95.0 D.145.7	18.0 D.100.7	CP889-1.6
CP889-100	100.0 D.145.7	18.0 D.100.7	CP889-1.6

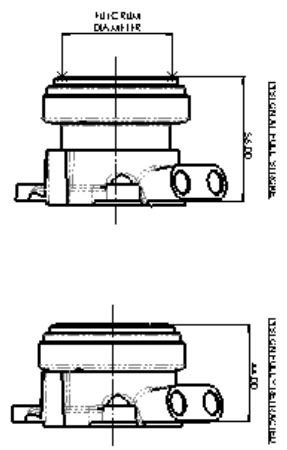
THE SLAVE CYLINDER FEATURES THE BEARING MOUNTED IN THE REAR FACE OF THE CYLINDER. THE BEARING IS MOUNTED IN THE REAR FACE OF THE CYLINDER. THE BEARING IS MOUNTED IN THE REAR FACE OF THE CYLINDER. THE BEARING IS MOUNTED IN THE REAR FACE OF THE CYLINDER.



REDUCED LENGTH CONFIGURATION (12mm STROKE)

ASSEMBLY NUMBER	FLUCCUM DIAMETER	FLUCCUM STROKE	REFLECTOR BEARING SIZE
CP889-20	20.0 D.145.7	12.0 D.100.7	CP889-1.6
CP889-25	25.0 D.145.7	12.0 D.100.7	CP889-1.6
CP889-30	30.0 D.145.7	12.0 D.100.7	CP889-1.6
CP889-35	35.0 D.145.7	12.0 D.100.7	CP889-1.6
CP889-40	40.0 D.145.7	12.0 D.100.7	CP889-1.6
CP889-45	45.0 D.145.7	12.0 D.100.7	CP889-1.6
CP889-50	50.0 D.145.7	12.0 D.100.7	CP889-1.6
CP889-55	55.0 D.145.7	12.0 D.100.7	CP889-1.6
CP889-60	60.0 D.145.7	12.0 D.100.7	CP889-1.6
CP889-65	65.0 D.145.7	12.0 D.100.7	CP889-1.6
CP889-70	70.0 D.145.7	12.0 D.100.7	CP889-1.6
CP889-75	75.0 D.145.7	12.0 D.100.7	CP889-1.6
CP889-80	80.0 D.145.7	12.0 D.100.7	CP889-1.6
CP889-85	85.0 D.145.7	12.0 D.100.7	CP889-1.6
CP889-90	90.0 D.145.7	12.0 D.100.7	CP889-1.6
CP889-95	95.0 D.145.7	12.0 D.100.7	CP889-1.6
CP889-100	100.0 D.145.7	12.0 D.100.7	CP889-1.6

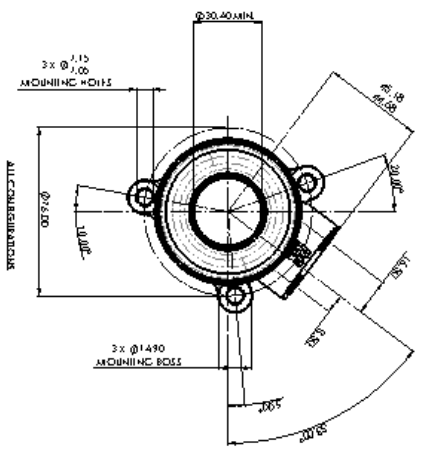
THE SLAVE CYLINDER FEATURES THE BEARING MOUNTED IN THE REAR FACE OF THE CYLINDER. THE BEARING IS MOUNTED IN THE REAR FACE OF THE CYLINDER. THE BEARING IS MOUNTED IN THE REAR FACE OF THE CYLINDER. THE BEARING IS MOUNTED IN THE REAR FACE OF THE CYLINDER.



REDUCED LENGTH - INNER ROTATING RACE (12 mm STROKE)

ASSEMBLY NUMBER	FLUCCUM DIAMETER	FLUCCUM STROKE	REFLECTOR BEARING SIZE
CP889-20	20.0 D.145.7	12.0 D.100.7	CP889-1.6
CP889-25	25.0 D.145.7	12.0 D.100.7	CP889-1.6
CP889-30	30.0 D.145.7	12.0 D.100.7	CP889-1.6
CP889-35	35.0 D.145.7	12.0 D.100.7	CP889-1.6
CP889-40	40.0 D.145.7	12.0 D.100.7	CP889-1.6
CP889-45	45.0 D.145.7	12.0 D.100.7	CP889-1.6
CP889-50	50.0 D.145.7	12.0 D.100.7	CP889-1.6
CP889-55	55.0 D.145.7	12.0 D.100.7	CP889-1.6
CP889-60	60.0 D.145.7	12.0 D.100.7	CP889-1.6
CP889-65	65.0 D.145.7	12.0 D.100.7	CP889-1.6
CP889-70	70.0 D.145.7	12.0 D.100.7	CP889-1.6
CP889-75	75.0 D.145.7	12.0 D.100.7	CP889-1.6
CP889-80	80.0 D.145.7	12.0 D.100.7	CP889-1.6
CP889-85	85.0 D.145.7	12.0 D.100.7	CP889-1.6
CP889-90	90.0 D.145.7	12.0 D.100.7	CP889-1.6
CP889-95	95.0 D.145.7	12.0 D.100.7	CP889-1.6
CP889-100	100.0 D.145.7	12.0 D.100.7	CP889-1.6

ASSEMBLY NUMBER TO REDUCE THE OVERALL LENGTH OF THE SLAVE CYLINDER. THE BEARING IS MOUNTED IN THE REAR FACE OF THE CYLINDER. THE BEARING IS MOUNTED IN THE REAR FACE OF THE CYLINDER. THE BEARING IS MOUNTED IN THE REAR FACE OF THE CYLINDER.



DESCRIPTION
 THE SLAVE CYLINDER IS A COMPONENT OF THE SLAVE CYLINDER ASSEMBLY. IT IS USED TO SUPPORT THE SLAVE CYLINDER AND TO PROVIDE A SEALING EFFECT. THE SLAVE CYLINDER IS A COMPONENT OF THE SLAVE CYLINDER ASSEMBLY. IT IS USED TO SUPPORT THE SLAVE CYLINDER AND TO PROVIDE A SEALING EFFECT. THE SLAVE CYLINDER IS A COMPONENT OF THE SLAVE CYLINDER ASSEMBLY. IT IS USED TO SUPPORT THE SLAVE CYLINDER AND TO PROVIDE A SEALING EFFECT.

NOTE
 THE SLAVE CYLINDER IS A COMPONENT OF THE SLAVE CYLINDER ASSEMBLY. IT IS USED TO SUPPORT THE SLAVE CYLINDER AND TO PROVIDE A SEALING EFFECT. THE SLAVE CYLINDER IS A COMPONENT OF THE SLAVE CYLINDER ASSEMBLY. IT IS USED TO SUPPORT THE SLAVE CYLINDER AND TO PROVIDE A SEALING EFFECT. THE SLAVE CYLINDER IS A COMPONENT OF THE SLAVE CYLINDER ASSEMBLY. IT IS USED TO SUPPORT THE SLAVE CYLINDER AND TO PROVIDE A SEALING EFFECT.

AP
 AP Peeling
 Wheeler Road
 Coventry
 CV3 4LB
 Tel: +44 (0)2476 342222
 Fax: +44 (0)2476 342223
 Email: sales@ap-peeling.com
 Web: www.ap-peeling.com

REV	DATE	BY	CHKD	DESCRIPTION
1	01/01/2016	AP	AP	ISSUE FOR PRODUCTION
2	01/01/2016	AP	AP	ISSUE FOR PRODUCTION
3	01/01/2016	AP	AP	ISSUE FOR PRODUCTION
4	01/01/2016	AP	AP	ISSUE FOR PRODUCTION

SCALE	1:1
SHEET	1 OF 1
TITLE	CONCENTRIC SLAVE CYLINDER INSTALLATION DRAWING
DWG NO.	CP889-100