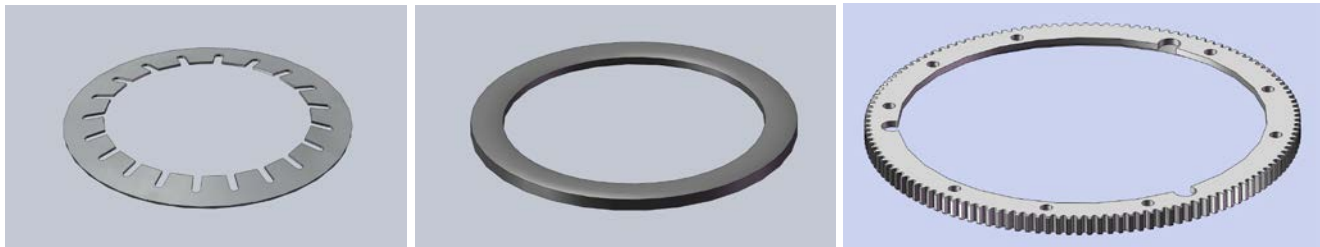




## CLUTCH INSTALLATION INSTRUCTIONS

### CP3850-2ABLK, -2ABLK:WEVO, -8ABLK, -9ABLK & -14ABLK:WEVO

Uninstall the current clutch and release bearing taking care to retain the following components as they are required to be reused with the AP Racing clutch: -



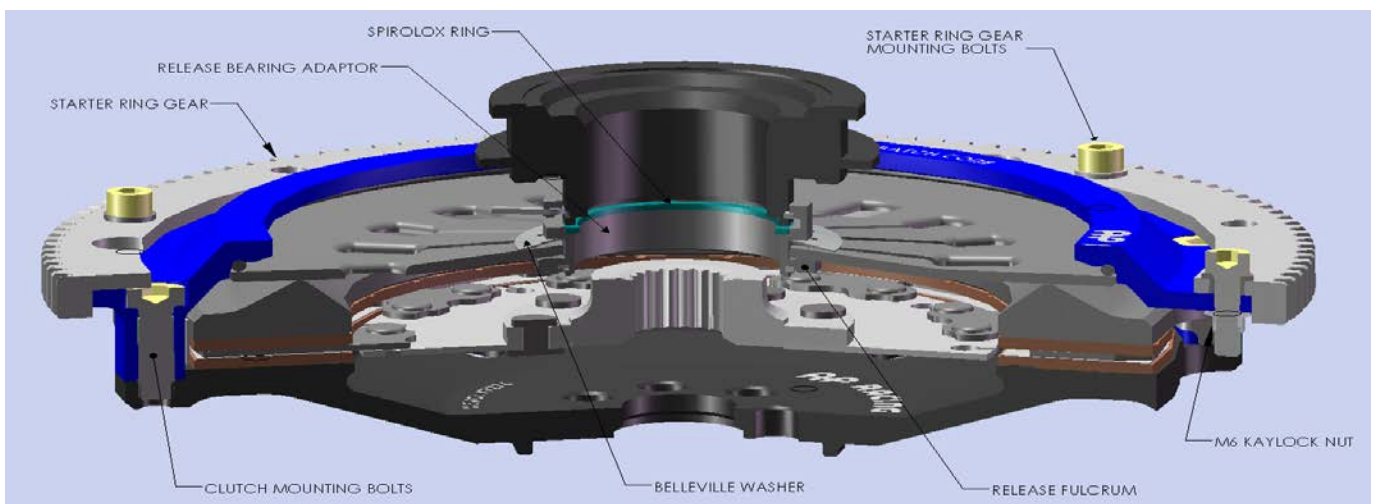
BELLEVILLE WASHER

RELEASE FULCRUM

STARTER RING GEAR

If replacement parts are required then these should be available through a Porsche spares outlet.

It is recommended to fit a new release bearing whilst replacing the clutch.



### CLUTCH ASSEMBLY

The kit should contain the clutch, drive plate and all fixings. The release bearing adaptor parts listed below should also be included.



CREST TO CREST SPRING (Not included in :WEVO kit)  
BEARING ADAPTOR  
RETAINER RING  
SNAP RING  
SPIROLOX RING

**AP Racing**

Wheler Road, Coventry, CV3 4LB. United Kingdom

Tel: +44 (0)24 7663 9595 Fax: +44 (0)24 7663 9559 e-mail: [sales@ap racing.co.uk](mailto:sales@ap racing.co.uk) Web: [www.ap racing.com](http://www.ap racing.com)

Every effort has been made to ensure the information contained in this publication is correct at the time of printing, the company however cannot except any responsibility for any errors or changes that may occur.

Assemble the release bearing to the release bearing adaptor.

1. Insert the retaining ring into the lower groove in the release bearing adaptor with the ears located in the wider slot.
2. Ensure the retaining ring fits into the upper groove with the ears in the narrow slot.
3. Return retainer ring back to the lower groove ready for assembly to the release bearing.
4. Place the crest to crest spring over the release bearing snout.



5. Fit the bearing adaptor over the release bearing snout with retainer ring in lower groove.
6. Press parts together by pushing on the adaptor with the palm of the hand to compress the crest to crest spring. The groove in the snout should become aligned with the retainer ring.
7. Push the retainer ring 'ears' together to close the ring into the groove in the snout, this should enable the 'ears' to engage in the gate in the adaptor between the wide and narrow slots.



8. Whilst keeping the 'ears' together, slowly allow the parts to spring apart, the retainer ring should be located in the groove in the snout with the 'ears' in the narrow slot in the adaptor.
9. Insert the spirolox ring into the space between the bearing adaptor and the release bearing snout by uncoiling the spirolox and feeding it through the adaptor bore.
10. The spirolox can be removed by locating the free end with a small screwdriver and carefully extracting with a pair of long nose pliers.

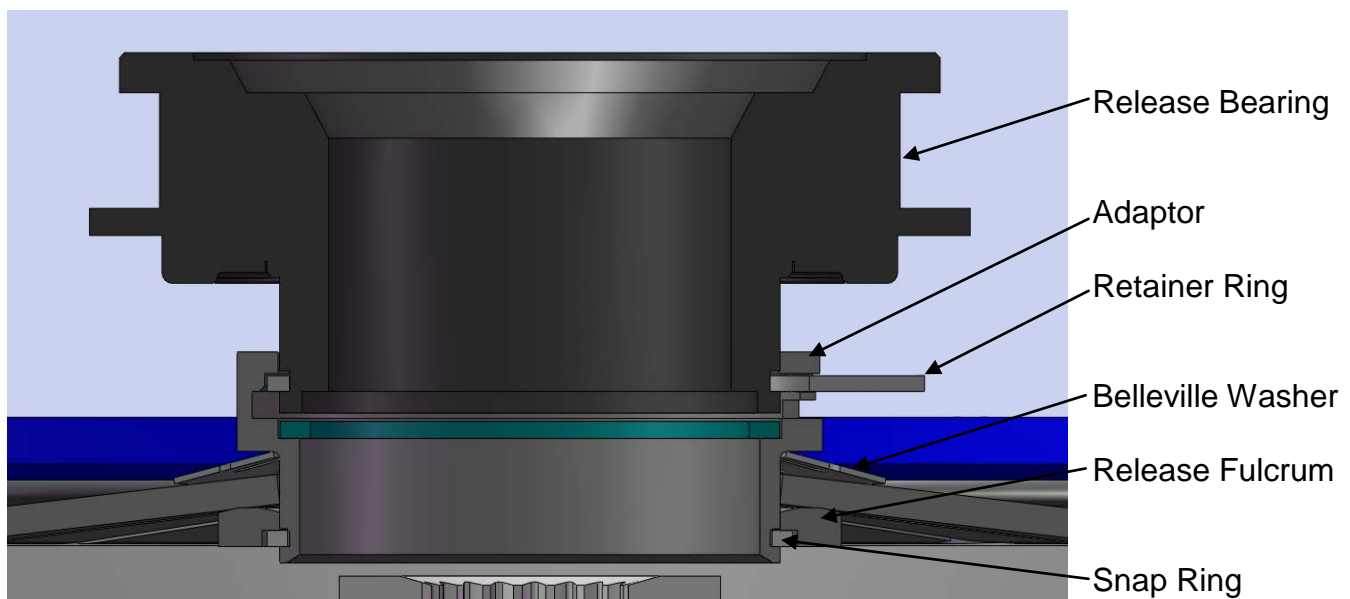


**AP Racing**

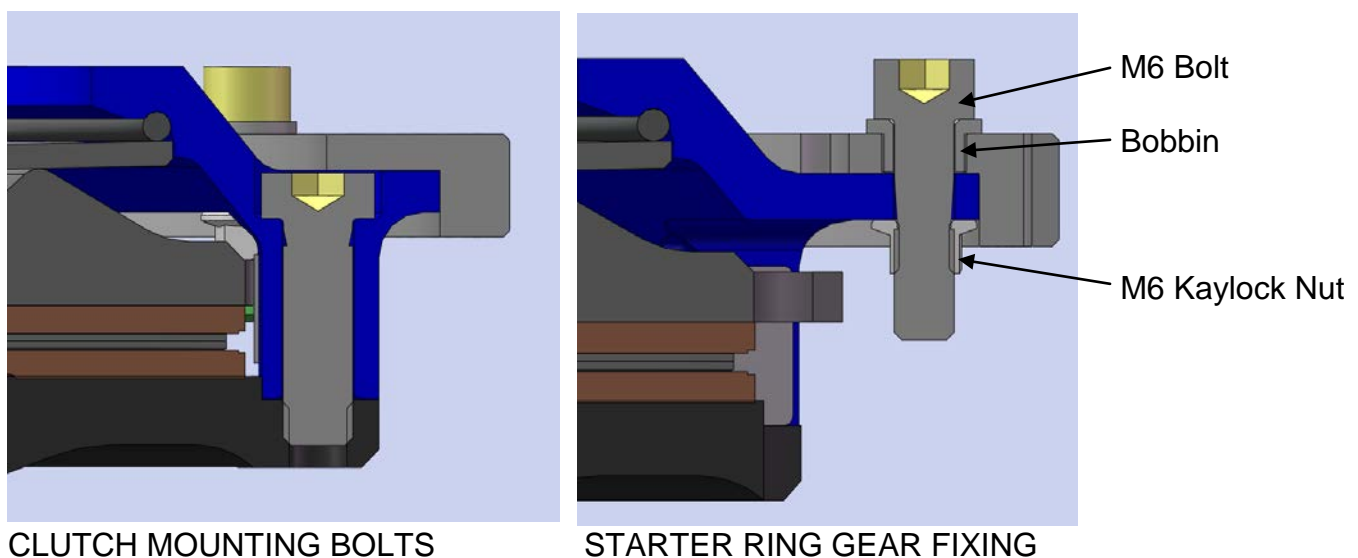
Wheler Road, Coventry, CV3 4LB. United Kingdom

Tel: +44 (0)24 7663 9595 Fax: +44 (0)24 7663 9559 e-mail: [sales@apracing.co.uk](mailto:sales@apracing.co.uk) Web: [www.apracing.com](http://www.apracing.com)

Attach the Release Bearing Assembly to the clutch.



Before fitting the clutch to the flywheel the release bearing assembly must be fitted to the diaphragm spring fingers by installing the snap ring under the release fulcrum and into the groove in the bearing adaptor snout.



CLUTCH MOUNTING BOLTS

STARTER RING GEAR FIXING

The clutch should be fitted to the flywheel before the starter ring gear is bolted to the top of the clutch cover. Transit tie-wraps should be removed before tightening installing the clutch.

Starter Ring Gear Bolt Torque                      12Nm    (9Lbft)

Please refer to installation drg CP3850-1CD or contact AP Racing for more information about this product including details on lightweight flywheels for this application.

---

**AP Racing**

Wheler Road, Coventry, CV3 4LB. United Kingdom

Tel: +44 (0)24 7663 9595 Fax: +44 (0)24 7663 9559 e-mail: [sales@ap racing.co.uk](mailto:sales@ap racing.co.uk) Web: [www.ap racing.com](http://www.ap racing.com)

Every effort has been made to ensure the information contained in this publication is correct at the time of printing, the company however cannot except any responsibility for any errors or changes that may occur.