

A1 INSTALLATION DRAWING

IF THIS DOCUMENT IS PRINTED IN HARDCOPY, IT IS FOR INFORMATION USE ONLY AND THEREFORE IS NOT SUBJECT TO UPDATING CONTROLS. ALWAYS REFER TO SOLIDWORKS VIEWER FOR LATEST ISSUE



THIS DRAWING IS CONFIDENTIAL AND IS SUPPLIED ON THE EXPRESS CONDITION THAT IT SHALL NOT BE LOANED OR COPIED OR DISCLOSED TO ANY OTHER PERSON OR USED FOR ANY OTHER PURPOSE WITHOUT THE WRITTEN CONSENT OF AP RACING LTD.

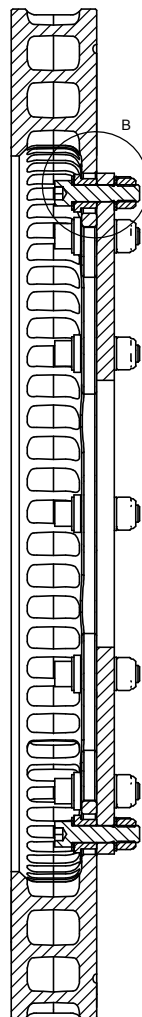


AP Racing
Wheler Road
Coventry
CV3 4LB

Tel: +44 (0) 24 7663 9595
Fax: +44 (0) 24 7663 9559
e-mail: engineering@apracings.co.uk
Web site: <http://www.apracings.com>

© AP Racing Ltd. 2005

Issue No.	Date & No.	Alterations		Zone	Initials
		Particulars			
1	08/02/06 B4477	FIRST ISSUE			
2	27/10/08 B5314	SHEET 2 ADDED			

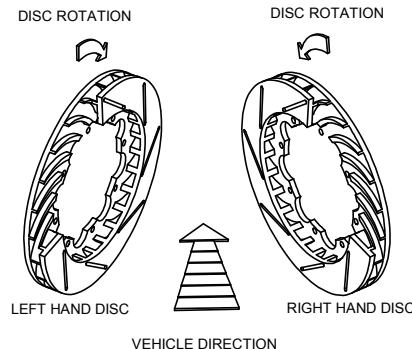


DISC MOUNTING PCØ. (VARIOUS)
SEE INDIVIDUAL DISC CUSTOMER DRAWING
FOR RECOMMENDED MOUNTING PCØ

8.0 MAX
6.50 TYP

'X' - HOLES Ø 6.450 THRU EQUI-SPACED
6.400
(FINAL SIZE, AFTER ANY TREATMENT).
CHF. 0.5 x 45° EACH SIDE
FOR QUANTITY 'X' SEE INDIVIDUAL
DISC CUSTOMER DRAWING.
 $\phi \pm 0.05 Z$

DISC INSTALLATION



DISC ROTATION

DISC ROTATION

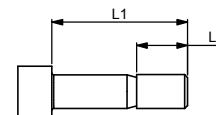
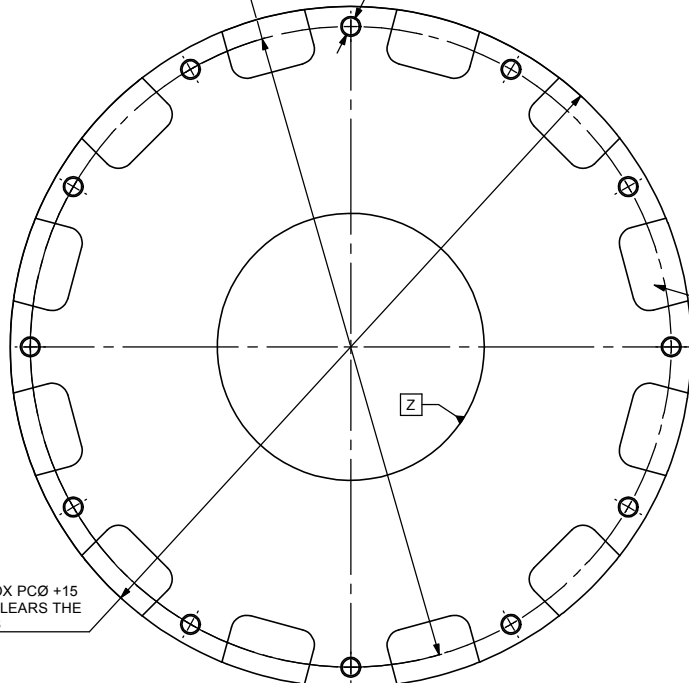
LEFT HAND DISC

RIGHT HAND DISC

VEHICLE DIRECTION

IT MAY BE NECESSARY TO ARRANGE CUT-OUTS AS ILLUSTRATED TO ENCOURAGE DISC COOLING ON THE BELL SIDE OF THE DISC. SEE AP RACING CATALOGUE FOR GUIDANCE ON DISC COOLING AND OTHER ADVICE ON DISCS.

O/DIA APPROX PCØ +15
ENSURE IT CLEARS THE
BRAKE PADS



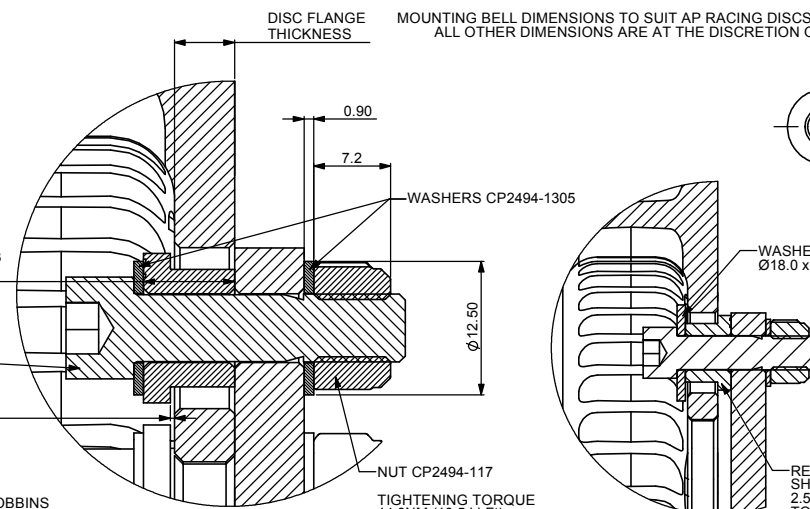
1/4" UNF CAP HEAD BOLT

DISC FLANGE THICKNESS MOUNTING BELL DIMENSIONS TO SUIT AP RACING DISCS AND MOUNTING BOLTS. ALL OTHER DIMENSIONS ARE AT THE DISCRETION OF THE CUSTOMER.

BOLT CHART		
BOLT PT No.	L1 mm	L2 mm
CP2494-116	22.3	9.5
CP2494-718	25.4	9.5
CP2494-331	27.0	15.9

NOTE:-
BOBBINS HAVE A LETTER STAMPED ON THEM THAT CORRESPONDS TO THE LAST LETTER IN THE PART No.

BOBBIN / FLOAT CHART			
STANDARD AP RACING DISC FLANGE THICKNESSES mm	BOBBIN PART No.	BOBBIN LENGTH L3 mm	NOMINAL DISC FLOAT mm
4.35 / 4.30	CP2494-595MA	7.22	0.4
4.85 / 4.80	CP2494-593MB	7.72	0.4
5.05 / 5.00	CP2494-592MC	7.92	0.4
5.55 / 5.50	CP2494-591MH	8.42	0.4
5.65 / 5.60	CP2494-1341MD	8.32	0.2
	CP2494-589MJ	8.52	0.4
6.35 / 6.30	CP2494-626ML	8.82	0.7
	CP2494-1342MM	9.02	0.2
	CP2494-504MP	9.22	0.4



DETAIL B SCALE 4:1

ALTERNATIVE ARRANGEMENT REVERSE BOBBIN

THE BOLTS, WASHERS, NUTS AND BOBBINS SHOWN ARE AVAILABLE IN VARIOUS KIT PART No'S

TIGHTENING TORQUE 14.0NM (10.5 LbfFt)

REVERSING THE BOBBIN AS SHOWN MOVES THE DISC 2.5mm INBOARD RELATIVE TO THE BELL.

UNLESS OTHERWISE STATED ALL DIMENSIONS ARE IN mm

SCALE 2:1	SHEET 1 OF 2
DRAWN	D.ARROWSMITH
APPROVED	
DERIVED FROM	
TITLE	GENERIC INSTALLATION DRG (FLOAT IN DISC TYPE)
DRG NO.	CP2494-2000CD

