

A0 INSTALLATION DRAWING

IF THIS DOCUMENT IS PRINTED IN HARDCOPY IT IS FOR INFORMATION USE ONLY AND THEREFORE IS NOT SUBJECT TO UPDATING CONTROLS. ALWAYS REFER TO SOLIDWORKS VIEWER FOR LATEST ISSUE



THIS DRAWING IS CONFIDENTIAL AND IS SUPPLIED ON THE EXPRESS CONDITION THAT IT SHALL NOT BE LOANED OR COPIED OR DISCLOSED TO ANY OTHER PERSON OR USED FOR ANY OTHER PURPOSE WITHOUT THE WRITTEN CONSENT OF AP RACING LTD.

AP RACING
 AP Racing
 Wheeler Road
 Coventry
 CV3 4LB
 Tel: +44 024 7663 9595
 Fax: +44 024 7663 9559
 e-mail: sales@apracing.co.uk
 Web site: HTTP://www.apracing.com

GENERAL DESCRIPTION

THIS IS A 2-POT CALIPER DESIGNED TO OPERATE ON AN IRON DISC OF UP TO DIA 258.20MM X 20MM THICK. ALL CALIPERS ARE FITTED WITH STAINLESS STEEL BRIDGE PIPES AS STANDARD. THIS CALIPER IS FITTED WITH DUST SEALS IN THE BORES.

APPLICATION

FIA FORMULA FOUR SINGLE SEATER CARS

TECHNICAL INFORMATION

PISTON DIA : 2 X 44.5MM
 TOTAL PISTON AREA : 31.11CM²
 PISTON MATERIAL - ALUMINIUM ALLOY
 BODY MATERIAL - ALUMINIUM ALLOY
 ALL HYDRAULIC THREADS M10 X 1.0
 WEIGHT LESS PADS: 1.6kg

INSTALLATION INFORMATION

DISC AND CALIPER MOUNTING TOLERANCES TO BE SUCH THAT THE DISC IS CENTRAL TO THE CALIPER TO WITHIN ±0.5MM. CALIPER TO BE MOUNTED WITHIN ±15° FROM VERTICAL. DISC CLEARANCE SHOULD BE 2.5MM NOM. FROM DISC O.D. TO PATHWAY.

KEY TO DIMENSIONS

DIMENSION 'PL' TOP OF PAD MATERIAL TO MOUNTING BOSS FACE WITH PAD SITTING DOWN ON PAD PINS.
 DIMENSION 'U' WHEEL CENTRE TO CALIPER MOUNTING BOSS FACE (DISC DIAMETER/2 - 'PL' DIMENSION).

HANDING NOTE

RH AS SHOWN LH OPPOSITE

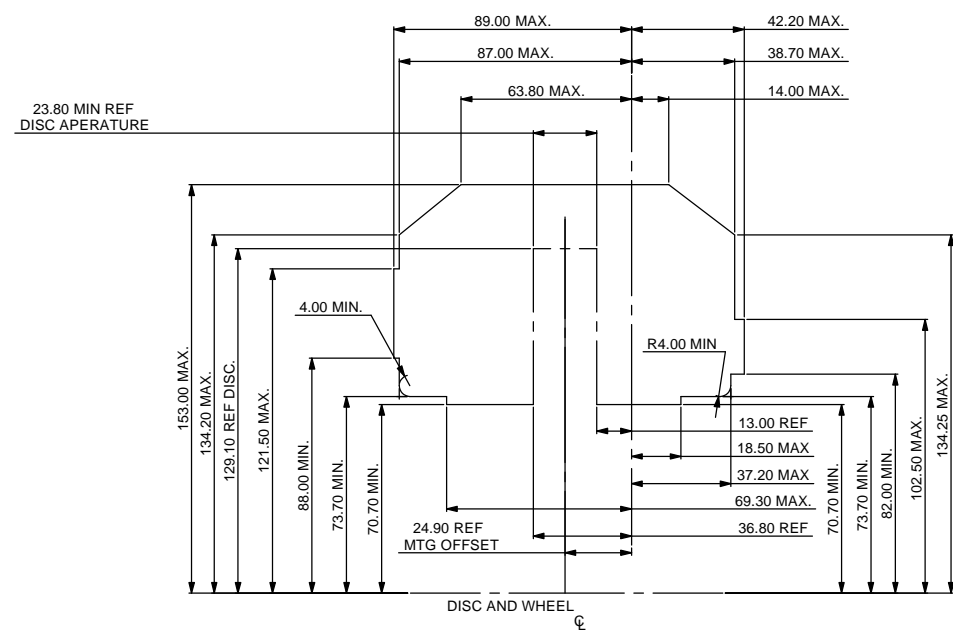
DISC WEAR NOTE

CALIPER DESIGNED TO OPERATE WITH MIN. DISC THICKNESS OF 18.80mm (ASSUMING WEAR DIFFERENTIAL FROM INBOARD AND OUTBOARD FACE NOT EXCEEDING 0.5mm)

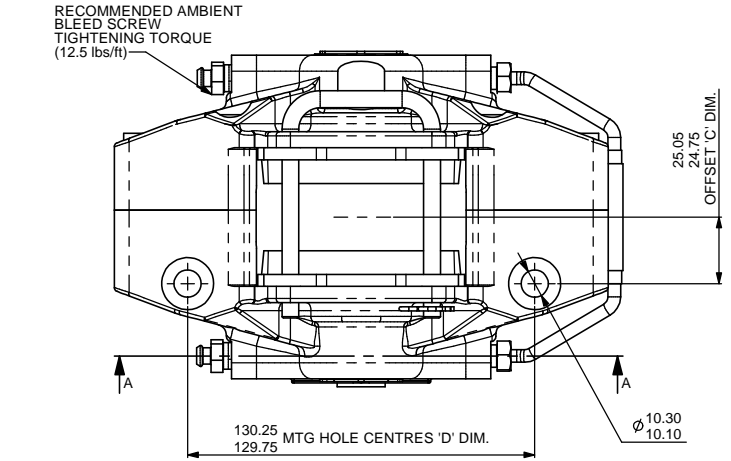
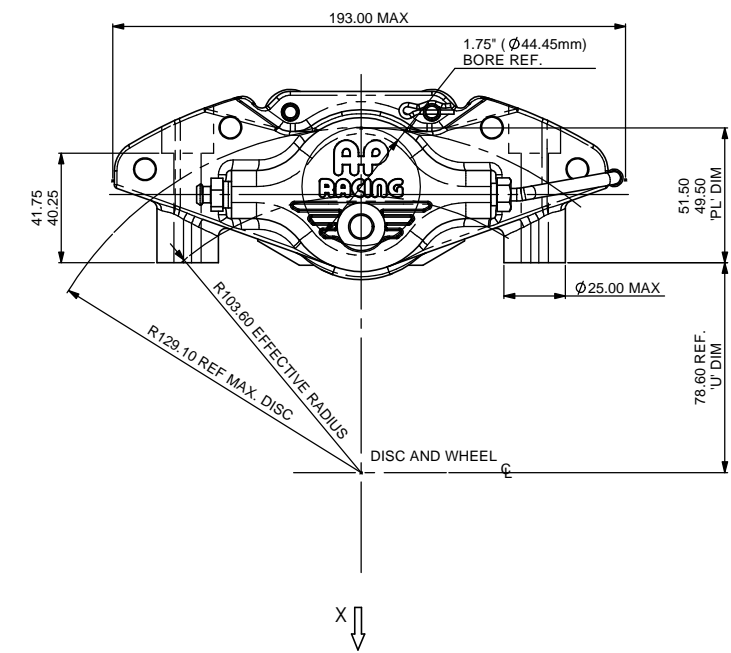
ELVD NOTE

ALL MATERIALS AND COATINGS COMPLY WITH E.U. DIRECTIVE 2000/53/EC

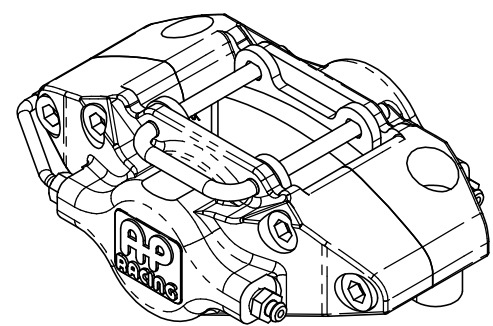
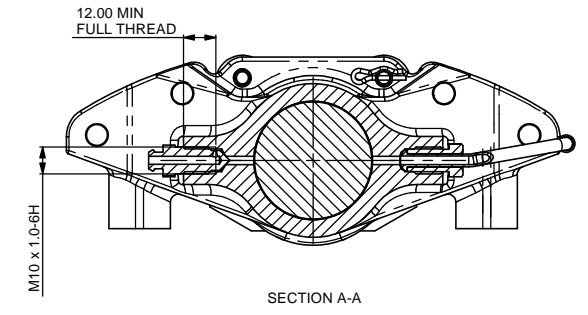
AP RACING TECHNICAL SECTION WILL BE PLEASED TO ADVISE ON THE MOST SUITABLE EQUIPMENT FOR ANY PARTICULAR APPLICATION



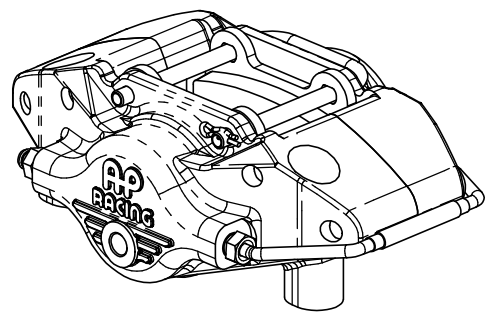
DRAWN TO SCALE 1:1



VIEW ON ARROW 'X'

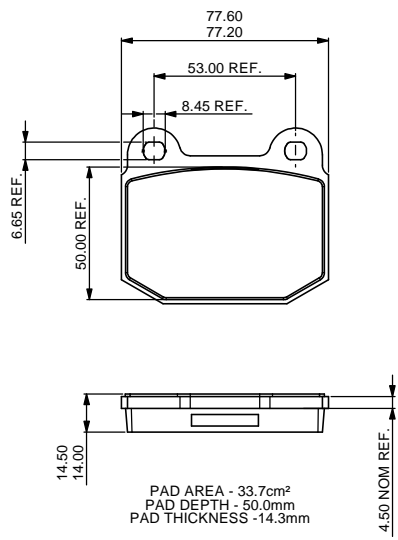


LEFT-HAND TRAILING (LHT) CALIPER ASSEMBLY
 CP5119-65T0:F4



RIGHT-HAND TRAILING (RHT) CALIPER ASSEMBLY
 CP5119-64T0:F4

CP5119 PAD FAMILY



Part Number Cross-reference	
AP Racing Part Number	Description
CP5119-64T0:F4	RIGHT HAND TRAILING OR LEFT HAND LEADING
CP5119-65T0:F4	LEFT HAND TRAILING OR RIGHT HAND LEADING

Issue No.	Alterations		Zone	Initials
	Date & No.	Particulars		
1	86960 19/03/14	FIRST ISSUE	#	JN

SCALE 1:1	SHEET 1 OF 2
DRAWN	James Nurse
APPROVED	
DERIVED FROM	CP5119-44CD
TITLE	
2 x 1.75" RADIAL MOUNTING F4 CALIPER INSTALLATION	
DRG NO.	CP5119-64:F4 CD

A0 INSTALLATION DRAWING

IF THIS DOCUMENT IS PRINTED IN HARDCOPY, IT IS FOR INFORMATION USE ONLY AND THEREFORE IS NOT SUBJECT TO UPDATING CONTROLS. ALWAYS REFER TO SOLIDWORKS VIEWER FOR LATEST ISSUE



FIRST ANGLE PROJECTION

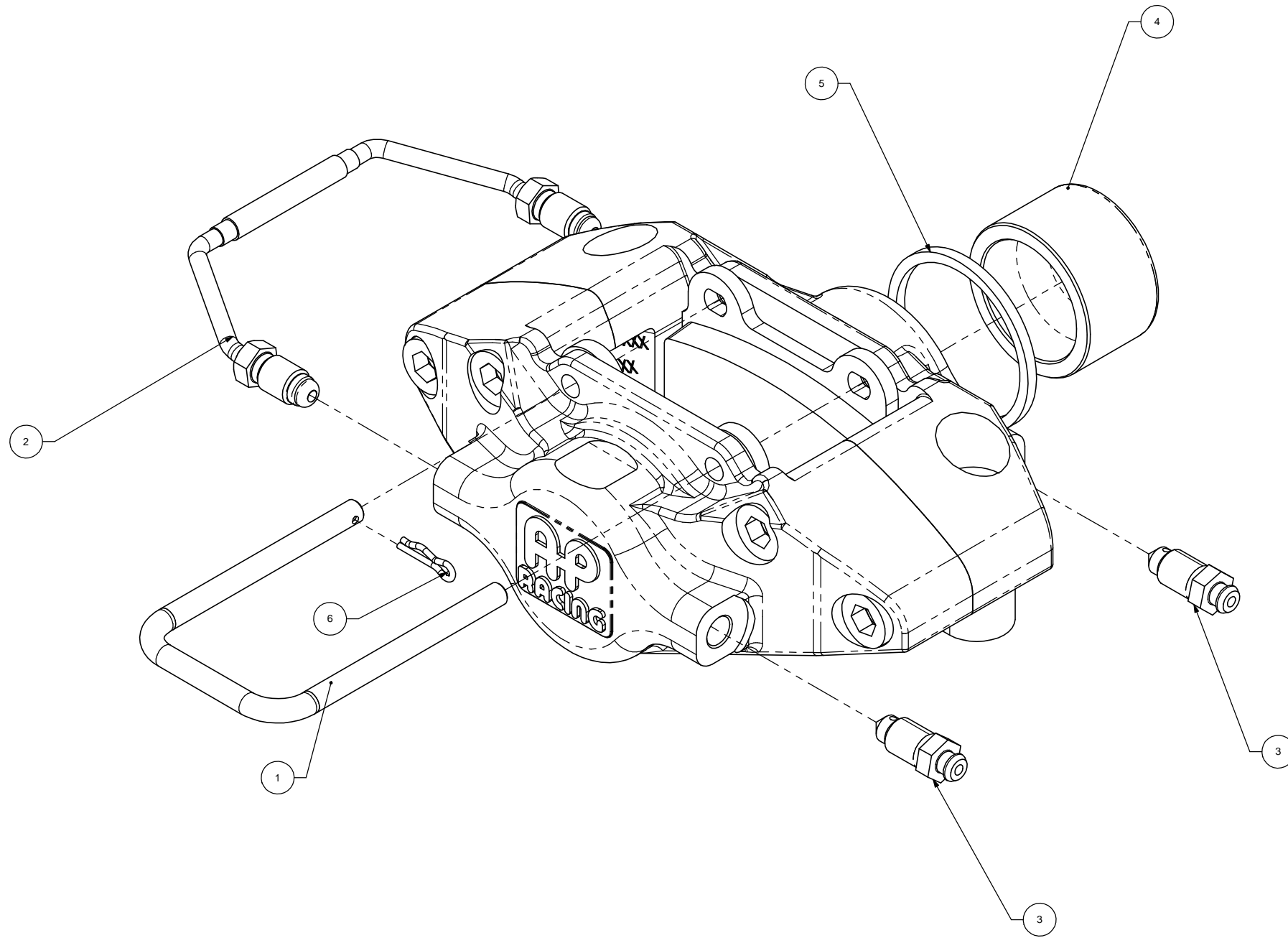
THIS DRAWING IS CONFIDENTIAL AND IS SUPPLIED ON THE EXPRESS CONDITION THAT IT SHALL NOT BE LOANED OR COPIED OR DISCLOSED TO ANY OTHER PERSON OR USED FOR ANY OTHER PURPOSE WITHOUT THE WRITTEN CONSENT OF AP RACING LTD.



AP Racing
Wheler Road
Coventry
CV3 4LB
Tel: +44 024 7663 9595
Fax: +44 024 7663 9559
e-mail: sales@apracings.co.uk
Web site: HTTP://www.apracings.com

© AP Racing Ltd. 2013

CP5119-64/65T0:F4 SPARES LIST				
REF	PART NUMBER	DESCRIPTION	QTY/CALIPER	FITTING NOTES
1	CP5119-177	PAD RETAINING CLIP	1	-
2	CP5119-46	EXTERNAL PIPE ASSEMBLY	1	PLEASE CONTACT AP RACING TECHNICAL SUPPORT FOR FITTING INSTRUCTIONS
3	CP3720-173	BLEED SCREWS	2	MAX TIGHTENING TORQUE 17Nm
4	CP5235-108	SST PISTON	2	-
5	CP4519-L	SEAL KIT	1	REFER TO PUBLICATION REF: P14.290 & P14.220
6	CP4398-108	R CLIP	1	-



Issue No.	Date & No.	Alterations	
		Particulars	Zone / Initials
-	-	SEE SHEET 1 FOR ISSUE INFORMATION.	-

SCALE 1:1	SHEET 2 OF 2
DRAWN	James Nurse
APPROVED	
DERIVED FROM	CP5119-44CD
TITLE	
2 x 1.75" RADIAL MOUNTING F4 CALIPER INSTALLATION	
DRG NO.	CP5119-64:F4 CD