

# A1 INSTALLATION DRAWING

IF THIS DOCUMENT IS PRINTED IN HARDCOPY, IT IS FOR INFORMATION USE ONLY AND THEREFORE IS NOT SUBJECT TO UPDATING CONTROLS. ALWAYS REFER TO SOLIDWORKS VIEWER FOR LATEST ISSUE



THIS DRAWING IS CONFIDENTIAL AND IS SUPPLIED ON THE EXPRESS CONDITION THAT IT SHALL NOT BE LOANED OR COPIED OR DISCLOSED TO ANY OTHER PERSON OR USED FOR ANY OTHER PURPOSE WITHOUT THE WRITTEN CONSENT OF AP RACING LTD.

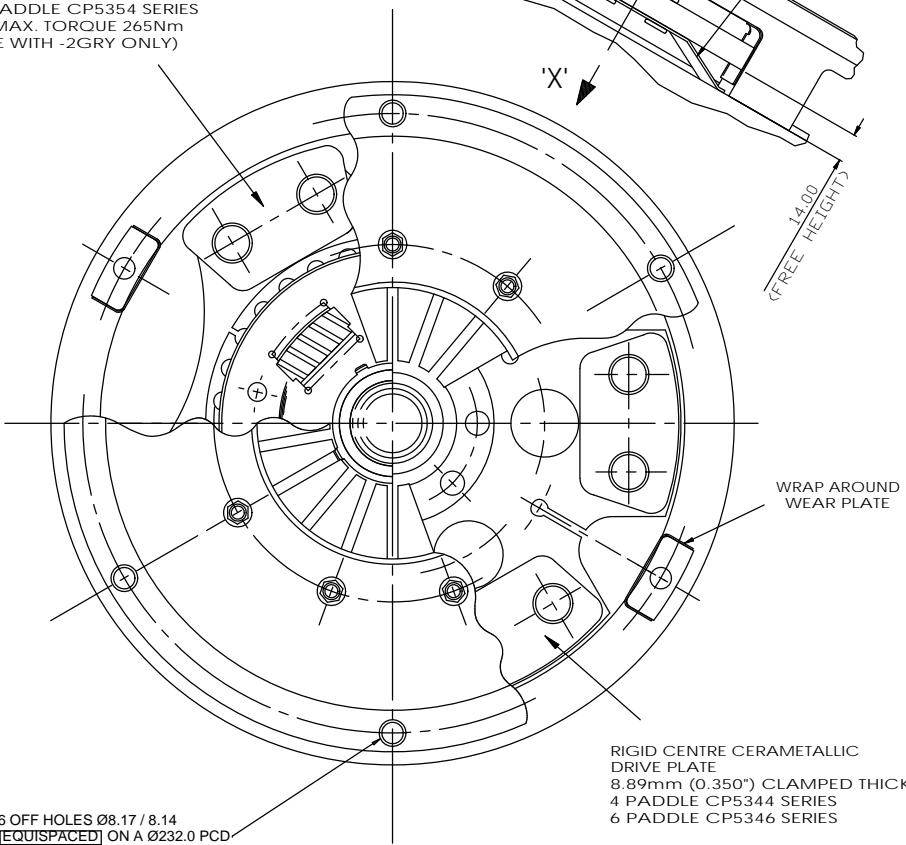


AP Racing  
Wheler Road  
Coventry  
CV3 4LB

Tel: +44 (0) 24 7663 9595  
Fax: +44 (0) 24 7663 9559  
e-mail: engineering@apracings.co.uk  
Web site: http://www.apracings.com

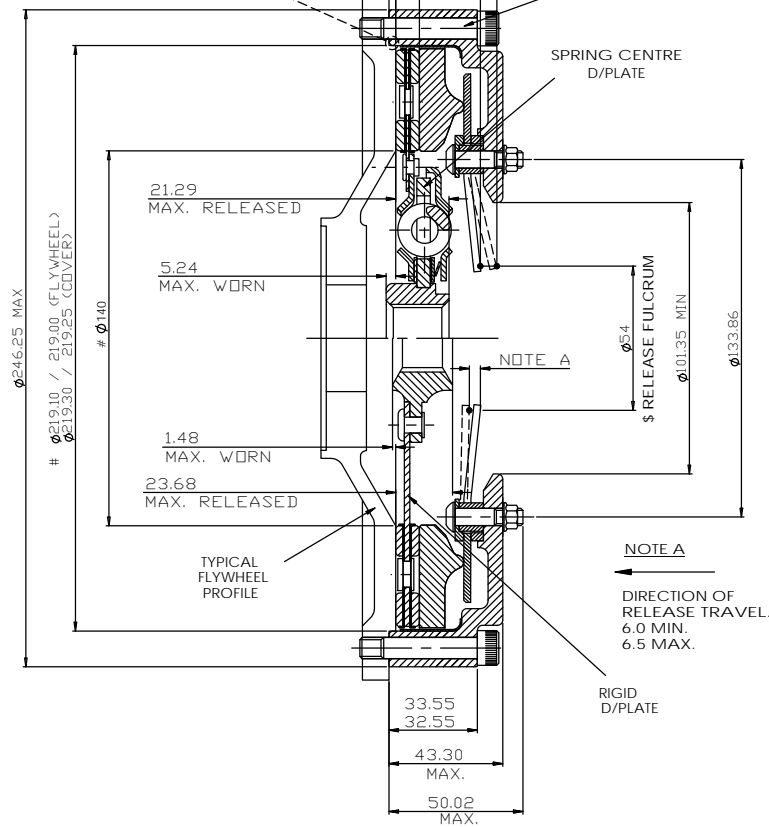
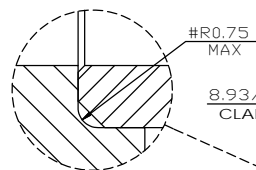
© AP Racing Ltd. 2005

SPRING CENTRE CERAMETALLIC DRIVE PLATE  
8.89mm (0.350") CLAMPED THICKNESS  
4 PADDLE CP5354 SERIES  
\* (MAX. TORQUE 265Nm USE WITH -2GRY ONLY)



### VIEW OF FLYWHEEL STEP

SCALE 10:1



CLUTCH ASSY. PART NO.	SET UP HEIGHT		RECOMMENDED MAX. DYNAMIC TORQUE CAPACITY Nm(lb/ft)	RELEASE LOAD (daN) MAX. PEAK WORN
	NEW	MAX WORN		
CP5241-2GRY	38.72 37.22	42.53 (1mm WEAR IN)	* 348 (256)	300
CP5241-3GRY	39.35 37.39	43.12 (0.75mm WEAR IN)	425 (314)	300
CP5241-3CRV	40.09 38.23	43.86 (0.75mm WEAR IN)	580 (427)	420

### § RECOMMENDED RELEASE BEARING -

STEEL CAGED, ROUND NOSED BALL TYPE BEARING  
A.P. RACING BEARINGS AVAILABLE FOR THIS APPLICATION  
CP3457-2, -6 & -10 (SEE CP3457-7 FOR DETAILS)

### SUGGESTED FLYWHEEL MATERIAL -

.35/.45% CARBON STEEL. BRINELL 200 MIN. OR SUITABLE MATERIAL FOR HIGH RPM.  
FRICTION FACE TO BE FINE TURNED AND GROUND SMOOTH AND FLAT. RUNOUT AT R101.6 °0.08 MAX. WHEN ASSEMBLED TO CRANKSHAFT.

### UNLESS OTHERWISE STATED:

DIMENSIONAL TOLERANCE ±0.25  
ANGULAR TOLERANCE ±0°30'

MAX SURFACE FINISH ON MACHINED SURFACES 3.2um (Ra)

ISSUE No.	Alterations		Zone	Initials
	Date & No.	Particulars		
1	OCT '95	FIRST ISSUE	#	SRO
2	2/11/95 RAC05499	CP5241-2CRV REMOVED SUHS, TORQUE CAPS & RELEASE LOADS ADJUSTED. HUB FLOAT LIMITS & RECOMMENDED MOUNTING BOLT ADDED. RECOMMENDED REL BRGS ADDED.	#	SRO
3	22/12/00 R0716	RATIONALISED COVER ASSEMBLY.	#	GRD
4	15/05/13 C3006	DRAWING CONVERTED TO SOLIDWORKS. MINIMUM FLYWHEEL RUBBING SURFACE DIMENSION ADDED.	#	JAS

SCALE 1:1	SHEET 1 OF 1
DRAWN	STEVE OXLEY
APPROVED	
DERIVED FROM	
TITLE	8.5" LUG DRIVE CLUTCH INSTALLATION
DRG NO.	CP5241-1