

# A1 INSTALLATION DRAWING

IF THIS DOCUMENT IS PRINTED IN HARDCOPY, IT IS FOR INFORMATION USE ONLY AND THEREFORE IS NOT SUBJECT TO UPDATING CONTROLS. ALWAYS REFER TO SOLIDWORKS VIEWER FOR LATEST ISSUE



THIS DRAWING IS CONFIDENTIAL AND IS SUPPLIED ON THE EXPRESS CONDITION THAT IT SHALL NOT BE LOANED OR COPIED OR DISCLOSED TO ANY OTHER PERSON OR USED FOR ANY OTHER PURPOSE WITHOUT THE WRITTEN CONSENT OF AP RACING LTD.



AP Racing  
Wheler Road  
Coventry  
CV3 4LB

Tel: +44 (0) 24 7663 9595  
Fax: +44 (0) 24 7663 9559  
e-mail: [engineering@apracings.com](mailto:engineering@apracings.com)  
Web site: <http://www.apracings.com>

© AP Racing Ltd. 2005

WEIGHT ..... 0.4 Kg (0.88LB)  
FULL STROKE ..... 31.75mm (1.25")  
HYDRAULIC ..... 7/16" x 20 UNF INLET  
3/8" x 24 UNF OUTLET  
BODY MATERIAL ..... ALUMINIUM ALLOY  
TYPICAL APPLICATION ..... FOR USE IN ALL CARS

**GENERAL DESCRIPTION:**  
ALUMINIUM ALLOY MASTER CYLINDER SUITABLE FOR MOST BRAKE & CLUTCH APPLICATIONS. THE INLET PORT IS THREADED TO ACCEPT VARIOUS INLET KITS. TWO STYLES OF PUSH ON INLET ADAPTORS ARE AVAILABLE, AS ARE TWO SIZES OF RESERVOIR. SEE DETAILS BELOW. CP6093 MASTER CYLINDER IS AVAILABLE IN THE FOLLOWING BORE SIZES: 5/8", 16.8mm, 0.7", 3/4", 13/16", 7/8", 15/16", 1.0"

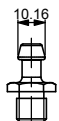
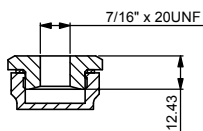
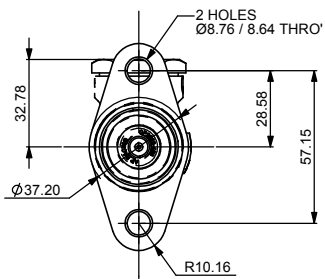
**CAPTIVE PUSH RODS:**  
GIVING EITHER A 110MM OR 155MM PUSH ROD LENGTH WITH A 5/16" UNF THREAD. NON STANDARD LENGTHS CAN BE ARRANGED UPON REQUEST. CYLINDERS WITH A UNF CAPTIVE PUSH ROD HAVE A 'PRT' PART NUMBER SUFFIX.

**NON-CAPTIVE PUSHRODS:**  
THIS ENABLES THE REMOVAL OF THE MASTER CYLINDER WITHOUT HAVING TO REMOVE THE PUSH ROD FROM THE PEDAL OR BALANCE BAR ASSEMBLY. NON-CAPTIVE CYLINDERS HAVE AN 'NC' PART NUMBER SUFFIX.

**NON-CAPTIVE PUSH RODS ARE SOLD SEPARATELY:**  
110MM WITH 5/16" UNF THREAD = CP2142-45  
155MM WITH 5/16" UNF THREAD = CP2142-47

**IMPORTANT NOTE:** CP6093 MASTER CYLINDERS ARE INDIVIDUALLY SHIMMED DURING ASSEMBLY TO MINIMISE FREE PLAY. THEREFORE PUSHRODS SHOULD NOT BE SWITCHED BETWEEN INDIVIDUAL MASTER CYLINDER ASSEMBLIES.

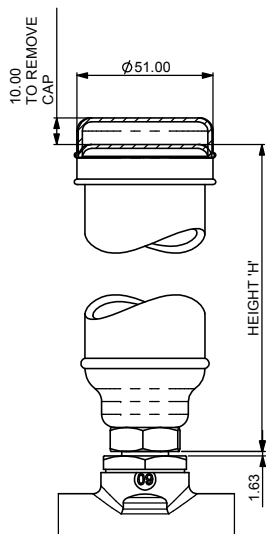
AP RACING TECHNICAL SECTION WILL BE PLEASED TO ADVISE ON THE MOST SUITABLE EQUIPMENT FOR ANY APPLICATION



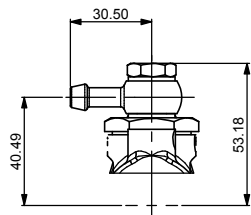
PUSH ON ADAPTOR  
CP2623-30

INLET TYPE 'B'		BORE SIZE
PART NUMBER		
CP6093-90PRT110	CP6093-90PRT155	Ø5/8" (15.8)
CP6093-905PRT110	CP6093-905PRT155	Ø16.8mm
CP6093-91PRT110	CP6093-91PRT155	Ø0.7" (17.8)
CP6093-92NC	-	Ø3/4" (19.1)
CP6093-92PRT110	CP6093-92PRT155	Ø3/4" (19.1)
CP6093-93NC	-	Ø13/16" (20.6)
CP6093-93PRT110	CP6093-93PRT155	Ø13/16" (20.6)
CP6093-94PRT110	CP6093-94PRT155	Ø7/8" (22.2)
CP6093-95PRT110	CP6093-95PRT155	Ø15/16" (23.8)
CP6093-96PRT110	CP6093-96PRT155	Ø1.0" (25.4)

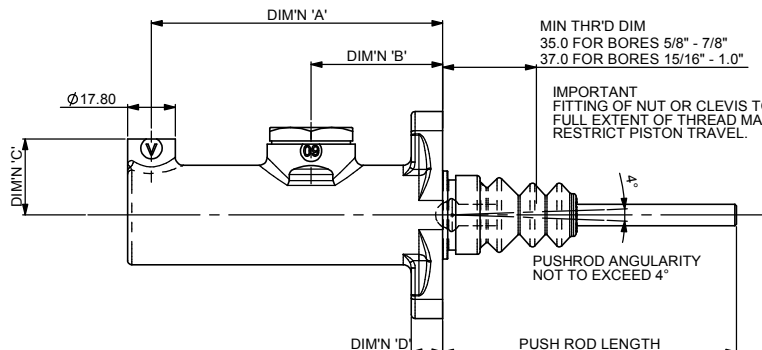
RESERVOIR KITS  
SEE TABLE



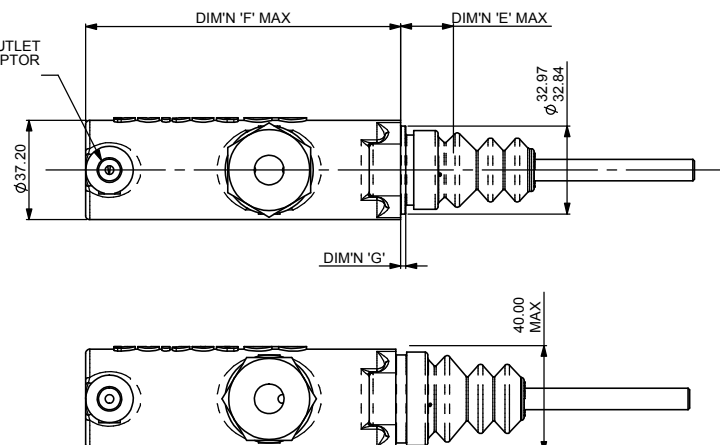
INLET TYPE 'C'		
PART No.	HEIGHT 'H'	VOLUME
	mm (ins)	cm <sup>3</sup> (cu in)
CP2709-10	178 (7.0)	160 (63.00)
CP2709-15	128 (5.0)	104 (40.94)



PUSH ON BANJO  
CP2623-41



3/8" x 24 UNF OUTLET AEROQUIP ADAPTOR AVAILABLE



VIEW SHOWING LARGER BOOT ON 15/16" & 1.0" CYLINDERS

**NOTE:**  
PUSHROD EXTENSIONS THAT GIVE A TOTAL LENGTH OF OVER 200mm ARE NOT RECOMMENDED. IT IS THE CUSTOMERS RESPONSIBILITY TO CHECK SUITABILITY OF PUSHROD AND EXTENSION PIECES TO TAKE APPLIED LOADS.

BORE SIZE	DIM'N 'A'	DIM'N 'B'	DIM'N 'C'	DIM'N 'D'	DIM'N 'E'	DIM'N 'F'	DIM'N 'G'
5/8"	109.06	49.26	28.5	11.81	20.2	118.33	1.95
16.8mm	109.06	49.26	28.5	11.81	20.2	118.33	1.95
0.7"	109.06	49.26	28.5	11.81	20.2	118.33	1.95
3/4"	109.06	49.26	28.5	11.81	20.2	118.33	1.95
13/16"	109.06	49.26	28.5	11.81	20.2	118.33	1.95
7/8"	109.06	49.26	28.5	11.81	20.2	118.33	1.95
15/16"	107.28	47.48	30.8	10.03	21.55	116.18	4.08
1.0"	107.28	47.48	30.8	10.03	21.55	116.18	4.08

Issue No.	Alterations			Zone	Initials
	Date & No.	Particulars			
1	04/02/02 B3005	FIRST ISSUE			SAT
2	20/05/02	DRAWING LAYOUT REVISED, KITS SHOWN SEPARATELY TO MAIN CYLINDER, AND LARGER BORE SIZES COMBINED WITH DRAWING FOR SMALLER BORES WITH ADDITION OF TABLE.			SAT
3	05/06/02	PART NUMBERS FOR 125 PUSHROD LENGTH CYLINDERS ADDED. OLD INLET REFERENCES REMOVED.		5F	SAT
4	08/07/02	STD. PUSHROD LENGTH 110 REPLACES STD. LENGTH OF 125		4K	SAT
5	17/10/02 B3471	MIN THR'D DIM'S ADDED IMPORTANT NOTE ADDED		12L	SAT
6	13/11/02 B3521	REFERENCE TO 1-1/8" AND 1-1/16" BORE SIZES DELETED.		#	DRA
7	25/02/03 B3438	NOTES AND CHARTS MODIFIED TO INCLUDE NEW Ø16.8mm BORE SIZE.		#	DRA
8	09/05/03	VIEW SHOWING LARGER BORE BOOT DIA ADDED		11E	SAT
9	17/03/04 B3430	PUSHROD EXTENSION NOTE ADDED		8E	SAT
10	09/05/06 B4532	NON-CAPTIVE VERSIONS ADDED		#	JH
11	28/09/09 B5697	PICTORIALY UPDATED WITH NEW BOOT			SAT

SCALE 1:1 SHEET 1 OF 1

DRAWN Steve Thomas

APPROVED

DERIVED FROM CP2293

TITLE  
1.25" STROKE PUSH TYPE  
MASTER CYLINDER

DRG NO. cp6093-1cd