

# A1 INSTALLATION DRAWING

IF THIS DOCUMENT IS PRINTED IN HARDCOPY, IT IS FOR INFORMATION USE ONLY AND THEREFORE IS NOT SUBJECT TO UPDATING CONTROLS. ALWAYS REFER TO SOLIDWORKS VIEWER FOR LATEST ISSUE



THIS DRAWING IS CONFIDENTIAL AND IS SUPPLIED ON THE EXPRESS CONDITION THAT IT SHALL NOT BE LOANED OR COPIED OR DISCLOSED TO ANY OTHER PERSON OR USED FOR ANY OTHER PURPOSE WITHOUT THE WRITTEN CONSENT OF AP RACING LTD.

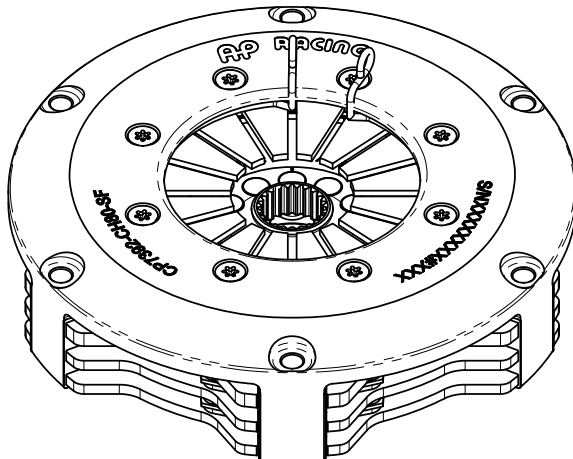


AP Racing  
Wheler Road  
Coventry  
CV3 4LB

Tel: +44 (0) 24 7663 9595  
Fax: +44 (0) 24 7663 9559  
e-mail: [engineering@apracings.co.uk](mailto:engineering@apracings.co.uk)  
Web site: <http://www.apracings.com>

© AP Racing Ltd. 2014

## CP7392, Ø184mm (7.25") SINTERED CLUTCH ASSEMBLY



### RECOMMENDED RELEASE BEARING :

STEEL CAGED, ROUND NOSED BALL TYPE BEARING TO BE FREE OF SPRING FINGERS WHEN CLUTCH IS FULLY ENGAGED.

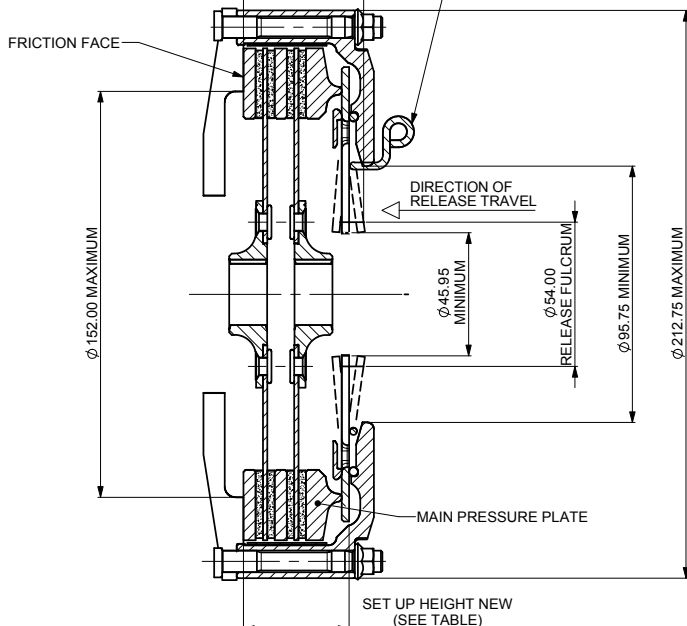
CP3457-2 STANDARD RELEASE BEARING (OUTER RACE ROTATES)  
CP3457-6 HIGH SPEED RELEASE BEARING (INNER RACE ROTATES).

RELEASE TRAVEL TO BE LIMITED TO 5.50mm MAXIMUM

SET UP HEIGHT  
WORN MAXIMUM  
(SEE TABLE)

INSTALLATION WIRE FOR USE WHEN  
INSTALLING CLUTCH TO ENSURE FLYWHEEL  
SIDE PRESSURE PLATE IS LOCATED ON THE  
COVER LUGS.

**THIS WIRE MUST BE REMOVED BEFORE USE**



## CP7392 CLUTCH FAMILY

### MAXIMUM DYNAMIC TORQUE CAPACITY

|         |     |     |     |  |  |  |  |
|---------|-----|-----|-----|--|--|--|--|
| (Nm)    | 644 | 426 | 266 |  |  |  |  |
| (ft.lb) | 475 | 314 | 196 |  |  |  |  |

### RELEASE LOAD

|                    |      |      |      |  |  |  |  |
|--------------------|------|------|------|--|--|--|--|
| Max. Peak New (N)  | 3500 | 2400 | 1600 |  |  |  |  |
| Max. Peak Worn (N) | 4400 | 3300 | 2200 |  |  |  |  |

### WEAR IN (See Note)

|  |      |      |      |  |  |  |  |
|--|------|------|------|--|--|--|--|
|  | 0.75 | 0.75 | 0.75 |  |  |  |  |
|--|------|------|------|--|--|--|--|

|                          |       |       |       |  |  |  |  |
|--------------------------|-------|-------|-------|--|--|--|--|
| Set Up Height New        | 41.65 | 42.30 | 41.56 |  |  |  |  |
| Set Up Height Worn - MAX | 39.11 | 39.76 | 39.02 |  |  |  |  |
| Set Up Height Worn - MAX | 44.32 | 44.98 | 44.23 |  |  |  |  |

(Set Up Height is calculated from the flywheel friction face.)

|               |      |      |      |  |  |  |  |
|---------------|------|------|------|--|--|--|--|
| Release Ratio | 3.42 | 3.42 | 3.42 |  |  |  |  |
|---------------|------|------|------|--|--|--|--|

Estimated Assembly Mass (Excluding Driven Plates) = 3.37 Kg

Estimated Assembly Inertia (Excluding Driven Plates) = 0.0222 Kgm<sup>2</sup>

Estimated Driven Plate Inertia - See Sheet 2

| PERFORMANCE SUFFIX    | CH  | OH  | NH  |  |  |  |  |
|-----------------------|-----|-----|-----|--|--|--|--|
| For Reference         |     |     |     |  |  |  |  |
| Diaphragm Spring Rate | CRV | ORA | GRN |  |  |  |  |
| Clutch Ratio          | HiR | HiR | HiR |  |  |  |  |

| MATERIAL SUFFIX | DRIVE PLATE MATERIAL | DRIVE PLATE THICKNESS |  |  |  |  |
|-----------------|----------------------|-----------------------|--|--|--|--|
| 80              | CERAMETALLIC         | 7.11mm                |  |  |  |  |

| FLYWHEEL TYPE    |        |                                   |
|------------------|--------|-----------------------------------|
|                  | SUFFIX | COMMENTS                          |
| FLAT FLYWHEEL    | FF     | N/A                               |
| STEPPED FLYWHEEL | SF     | FOR INSTALLATION DATA SEE SHEET 2 |

Sample AP Racing Part No. **CP7392-CH80-SF**

| WEAR IN  |
|--|
| THIS CLUTCH HAS BEEN DESIGNED FOR THE WEAR IN INDICATED ABOVE, |
| DRIVEN PLATE THICKNESS NEW: 7.11mm NOMINAL                     |
| DRIVEN PLATE THICKNESS WORN: 6.74mm MIN                        |

| DRIVEN PLATES - SEE SHEET 2   |                        |                        |                        |                       |
|---|------------------------|------------------------|------------------------|-----------------------|
| TYPICAL DRIVEN PLATE SIZES - CONTACT AP RACING FOR OTHERS AVAILABLE |                        |                        |                        |                       |
| SPLINE  | 3 PADDLE (CP8300 TYPE) | 4 PADDLE (CP8400 TYPE) | 6 PADDLE (CP8600 TYPE) | ORGANIC (CP5386 TYPE) |
| 1" X 23T  | CP8300-A036H           | CP8400-A036H           | CP8600-A036H           | CP5386-10             |
| 7/8" x 20T  | CP8300-A026            | CP8400-A026            | CP8600-A026            | CP5386-12             |
| 1 5/32" x 26T   | CP8300-A040            | CP8400-A040            | CP8600-A040            | N/A                   |
| 29.0 x 10T  | CP8300-A008            | CP8400-A008            | CP8600-A008            | CP5386-15             |

| Issue No. | Alterations |                                       | Zone | Initials |
|-----------|-------------|---------------------------------------|------|----------|
|           | Date & No.  | Particulars                           |      |          |
| FOR ALL   |             | ISSUE RECORDS PRE<br>SEE ARCHIVE COPY | 13   |          |

|   |                   |   |   |     |
|---|-------------------|---|---|-----|
| 4 | 07/10/14<br>C4778 | DRAWING UPDATED TO<br>CURRENT STANDARD<br><br>SUH CHANGES (AS NOW<br>MEASURED FROM FRICTION<br>FACE NOT FLYWHEEL STEP)<br>CH ASSEMBLY:<br>41.65 WAS 44.66, 39.11 WAS<br>41.55, 44.32 WAS 47.67<br>OH ASSEMBLY:<br>42.30 WAS 45.41, 39.76 WAS<br>42.27, 44.98 WAS 48.43<br>NH ASSEMBLY:<br>41.66 WAS 45.20, 39.02 WAS<br>42.09, 44.23 WAS 48.21. | # | bcf |
|---|-------------------|---|---|-----|

|              |  |
|--------------|--|
| SCALE 1:1    | SHEET 1 OF 2                                   |
| DRAWN        | DAVID CONSTABLE-BERRY                          |
| APPROVED     |  |
| DERIVED FROM | CP7972   |
| TITLE        | Ø184 (7.25") TWIN PLATE<br>CLUTCH INSTALLATION |
| DRG NO.      | CP7392-1CD                                     |

# A1 INSTALLATION DRAWING

IF THIS DOCUMENT IS PRINTED IN HARDCOPY, IT IS FOR INFORMATION USE ONLY AND THEREFORE IS NOT SUBJECT TO UPDATING CONTROLS. ALWAYS REFER TO SOLIDWORKS VIEWER FOR LATEST ISSUE

FIRST ANGLE PROJECTION

THIS DRAWING IS CONFIDENTIAL AND IS SUPPLIED ON THE EXPRESS CONDITION THAT IT SHALL NOT BE LOANED OR COPIED OR DISCLOSED TO ANY OTHER PERSON OR USED FOR ANY OTHER PURPOSE WITHOUT THE WRITTEN CONSENT OF AP RACING LTD.

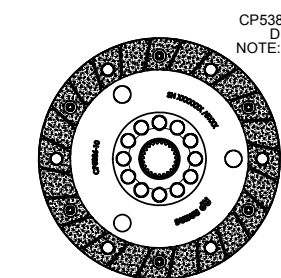
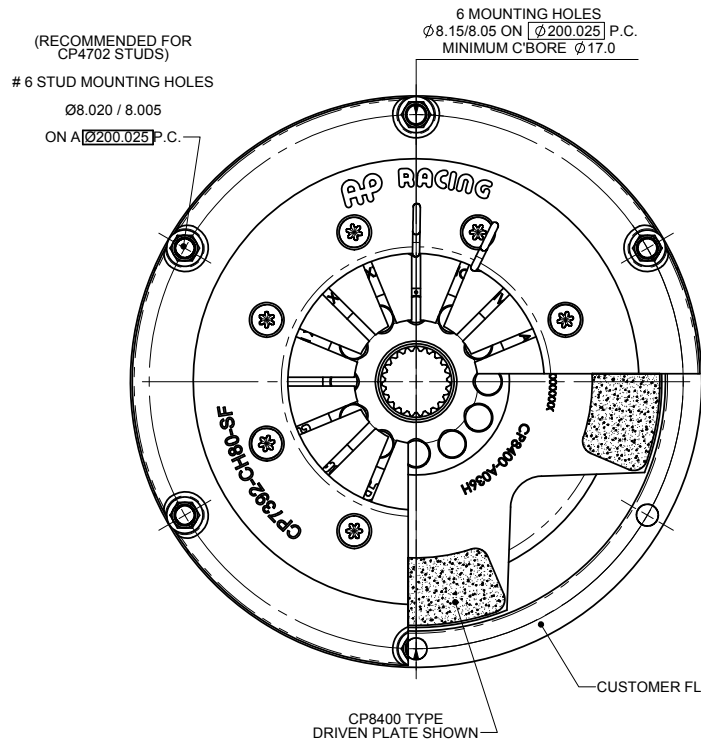


AP Racing  
Wheler Road  
Coventry  
CV3 4LB

Tel: +44 (0) 24 7663 9595  
Fax: +44 (0) 24 7663 9559  
e-mail: [engineering@apracings.co.uk](mailto:engineering@apracings.co.uk)  
Web site: <http://www.apracings.com>

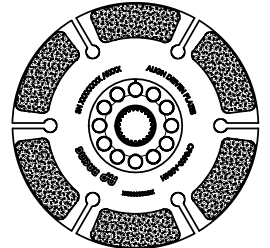
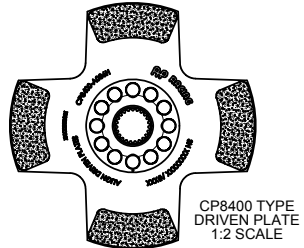
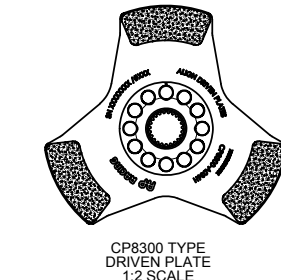
© AP Racing Ltd. 2014

| Issue No. | Alterations |                                    | Zone | Initials |
|-----------|-------------|------------------------------------|------|----------|
|           | Date & No.  | Particulars                        |      |          |
| -         | -           | SEE SHEET 1 FOR ISSUE INFORMATION. | -    | -        |



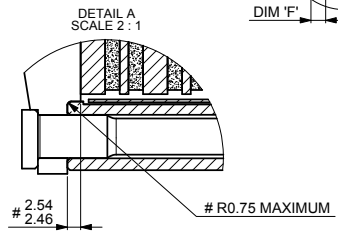
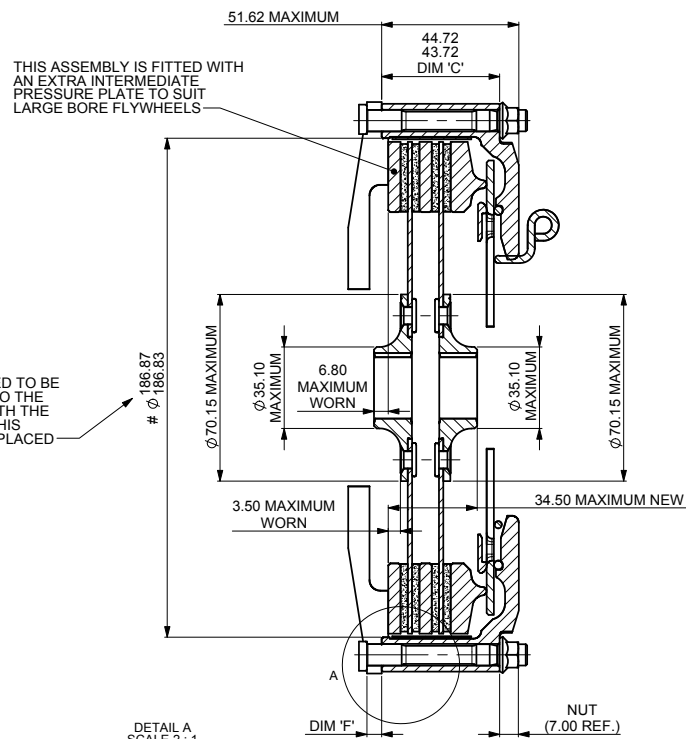
| PLATE TYPE | TYPICAL ASSEMBLY MASS | TYPICAL ASSEMBLY INERTIA |
|------------|-----------------------|--------------------------|
| CP8300     | 0.906kg               | 0.0032kg/m <sup>2</sup>  |
| CP8400     | 1.048kg               | 0.0040kg/m <sup>2</sup>  |
| CP8600     | 1.339kg               | 0.0058kg/m <sup>2</sup>  |
| CP5386     | 1.164kg               | 0.0046kg/m <sup>2</sup>  |

VALUES ARE FOR 2 DRIVEN PLATES



## FLYWHEEL DIMENSIONS

### # FLYWHEEL DIMENSIONS STEPPED FLYWHEEL SUFFIX -SF



#### RECOMMENDED CLUTCH MOUNTING :

(FOR ALL TYPES OF ASSEMBLY)  
M8 x 1.0, CP4702 FAMILY STUD AND K-LOCK NUT.  
TIGHTENING TORQUE : 19Nm (14 ft.lb)

LENGTH OF STUD REQUIRED TO BE CALCULATED THUS :

STUD LENGTH = DIMENSIONS 'C' + 'F' + NUT

THIS CALCULATED LENGTH TO BE ROUNDED UP TO THE NEXT AVAILABLE STANDARD STUD LENGTH.

#### SUGGESTED FLYWHEEL MATERIAL:

0.35/0.45% CARBON STEEL, BRINELL 200 MIN. OR SUITABLE MATERIAL FOR HIGH RPM.  
FRICTION FACE TO BE FINE TURNED AND GROUND SMOOTH AND FLAT. RUN OUT AT R77.2, ±0.08 WHEN ASSEMBLED TO CRANKSHAFT.

|  |                       |
|--|-----------------------|
| SCALE 1:1                                      | SHEET 2 OF 2          |
| DRAWN  | DAVID CONSTABLE-BERRY |
| APPROVED                                       |                       |
| DERIVED FROM                                   | CP7972                |
| TITLE  |                       |
| Ø184 (7.25") TWIN PLATE<br>CLUTCH INSTALLATION |                       |
| DRG NO.  | CP7392-1CD            |