

A1 INSTALLATION DRAWING

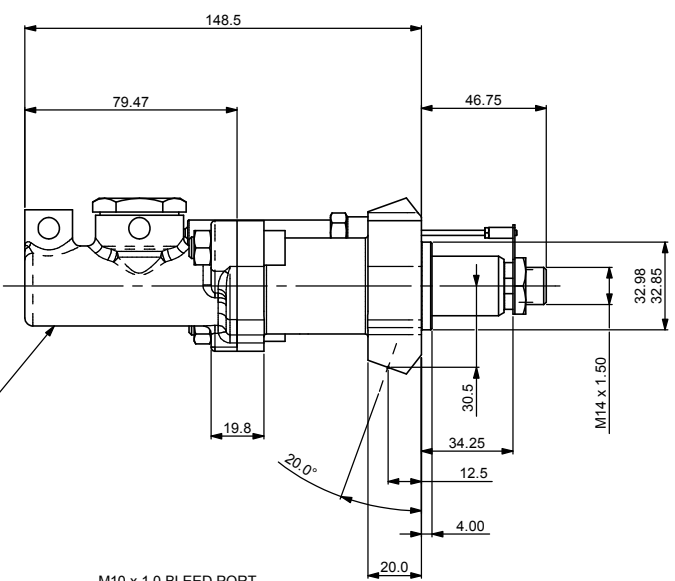
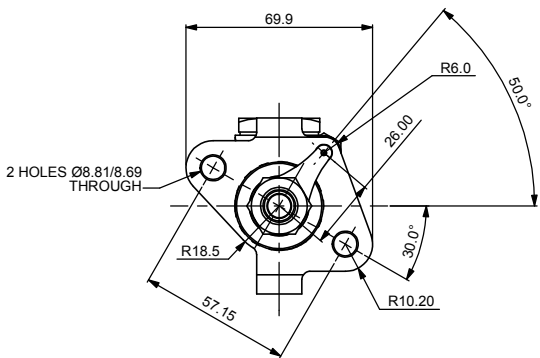
IF THIS DOCUMENT IS PRINTED IN HARD COPY IT IS FOR INFORMATION USE ONLY AND THEREFORE IS NOT SUBJECT TO UPDATING CONTROLS. ALWAYS REFER TO SOLIDWORKS VIEWER FOR LATEST ISSUE

FIRST ANGLE PROJECTION

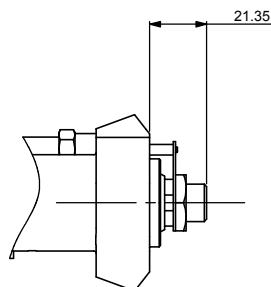
THIS DRAWING IS CONFIDENTIAL AND IS SUPPLIED ON THE EXPRESS CONDITION THAT IT SHALL NOT BE LOANED OR COPIED OR DISCLOSED TO ANY OTHER PERSON OR USED FOR ANY OTHER PURPOSE WITHOUT THE WRITTEN CONSENT OF AP RACING LTD.



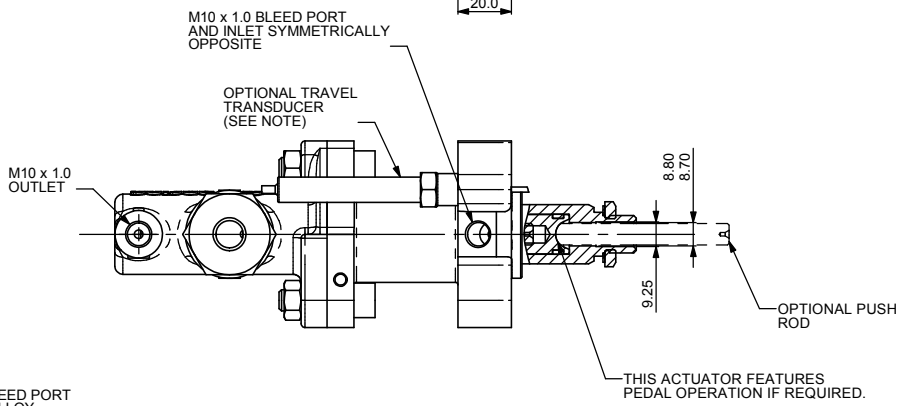
© AP Racing Ltd. 2004
 AP Racing
 Wheler Road
 Coventry
 CV3 4LB
 Tel: +44 (0) 24 7663 9595 e-mail: engineering@apracing.co.uk
 Fax: +44 (0) 24 7663 9559 Web site: http://www.apracing.com



CP4623 MASTER CYLINDER SHOWN FOR ILLUSTRATION PURPOSES ONLY, NOT PART OF ASSEMBLY.



AT FULL 25.4mm TRAVEL



WEIGHT.....397g
 FULL STROKE.....25.4 (1.0")
 EFFECTIVE PISTON AREA.....178.0mm²
 HYDRAULIC THREADS.....M10x1.0 INLET
 M10x1.0 BLEED PORT
 BODY MATERIAL.....ALUMINIUM ALLOY
 TYPICAL APPLICATIONS.....FOR USE IN ALL CARS

GENERAL DESCRIPTION:
 POWER ACTUATOR FOR USE WITH CP4623 MASTER CYLINDER.
 THE POWER ACTUATOR TO BE OPERATED WITH MINERAL OIL ONLY.
 PEDAL OPERATION BACKUP.

ORDERING:
 IF AN OPTIONAL POTENTIOMETER IS REQUIRED PLEASE ADD A 'D' SUFFIX TO THE PART NUMBER.
 I.E. CP7950-5D

SEAL REPAIR KIT : CP7950-6RK

OPTIONAL SENSOR DETAILS
 LINEAR POTENTIOMETER
 FULL ELECTRICAL STROKE : 30mm
 NOTE : ONLY APPROX 26mm STROKE IS UTILISED IN THIS CONFIGURATION
 RESISTANCE : 1.2 kOhm
 INDEPENDENT LINEARITY : 0.25%
 APPLIED VOLTAGE MAX. : 26 Vdc

MAX TORQUE ON 1/4 UNF SENSOR MTG. NUT - 10Nm

ASSEMBLY NUMBER	BORE SIZE	NON CAPTIVE CYLINDER PART NUMBER (INCLUDED)	POWER ATCUATOR (INCLUDED)
CP7950-5	14.0mm	CP4623-88NC-ACT	CP7950-6
FOR OTHER BORE SIZES PLEASE CONTACT AP RACING			

Issue No	Alterations		Zone	Initials
	Date & No.	Particulars		
1	22-09-04 C2251	FIRST ISSUE	#	ROO
2	21/04/06 C2895	DRAWING BROUGHT IN-LINE WITH PRODUCTION COMPONENTS.	#	JG
3	11/05/06 C2895	PEDAL OPERATION DETAIL ADDED.	#	JG

SCALE 1:1	SHEET 1 OF 1
DRAWN	RICHARD GOSTICK
APPROVED	
DERIVED FROM	
TITLE POWER ACTUATED MASTER CYLINDER INSTALLATION	
DRG NO.	cp7950-1cd

