

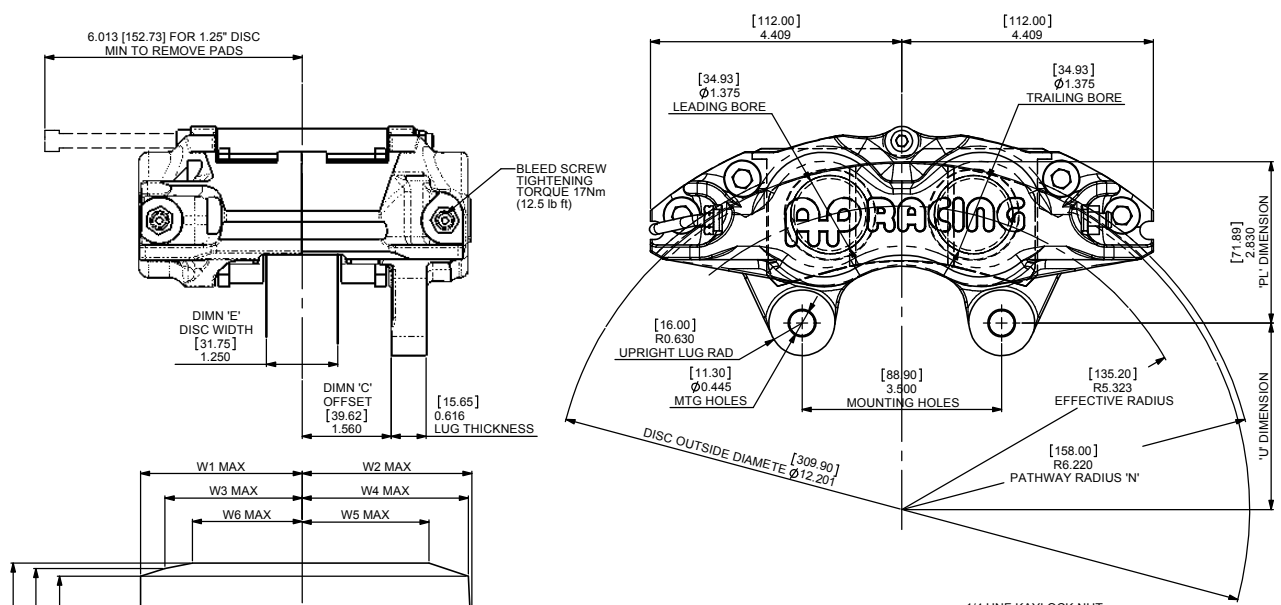
B1 INSTALLATION DRAWING

IF THIS DOCUMENT IS PRINTED IN HARDCOPY, IT IS FOR INFORMATION USE ONLY AND THEREFORE IS NOT SUBJECT TO UPDATING CONTROLS. ALWAYS REFER TO SOLIDWORKS VIEWER FOR LATEST ISSUE



THIS DRAWING IS CONFIDENTIAL AND IS SUPPLIED ON THE EXPRESS CONDITION THAT IT SHALL NOT BE LOANED OR COPIED OR DISCLOSED TO ANY OTHER PERSON OR USED FOR ANY OTHER PURPOSE WITHOUT THE WRITTEN CONSENT OF AP RACING LTD.

AP Racing
Wheler Road
Coventry
CV3 4LB
Tel: +44 024 7663 9595
Fax: +44 024 7663 9559
e-mail: sales@apracings.co.uk
Web site: HTTP://www.apracings.com



GENERAL DESCRIPTION
THIS IS A LOW COST 4 PISTON DIFFERENTIAL BORE CALIPER, DESIGNED TO OPERATE ON A VENTILATED IRON DISC OF Ø11.50" (292.1mm) TO Ø12.2" (309.9mm). ALL CALIPERS ARE MANUFACTURED WITH BLEED SCREW AND PIPE ASSEMBLY PROTECTION. STAINLESS STEEL PAD ABUTMENT WEAR PLATES AND HIGH TEMPERATURE LOW DRAG SEALS ARE FITTED AS STANDARD. SEALS ARE 'SEAL IN BORE' TYPE. RECIRCULATION KITS ARE AVAILABLE WITH AP RACING PATENTED DESIGN.

TYPICAL APPLICATION
LATE MODEL REAR.

TECHNICAL INFORMATION
TOTAL PISTON AREA - 5.94 in² (38.32mm²)

PISTON MATERIAL - STAINLESS STEEL (STANDARD)

BODY MATERIAL - ALUMINIUM ALLOY

HYDRAULIC CONNECTIONS - 3/8" x 24 UNF

NOTES - SHOULD THE PISTON BE INADVERTENTLY REMOVED, THEY SHOULD BE WIPED CLEAN AND BE SMEARED WITH AP RACING BRAKE FLUID BEFORE REPLACEMENT.

IMPORTANT INFORMATION
DISC AND CALIPER MOUNTING TOLERANCES TO BE SUCH THAT THE DISC IS CENTRAL TO THE CALIPER TO WITHIN ±0.019" (0.50mm). THE CLEARANCE FROM DISC DIAMETER TO PATHWAY SHOULD BE 0.098" (2.5mm) NOM.

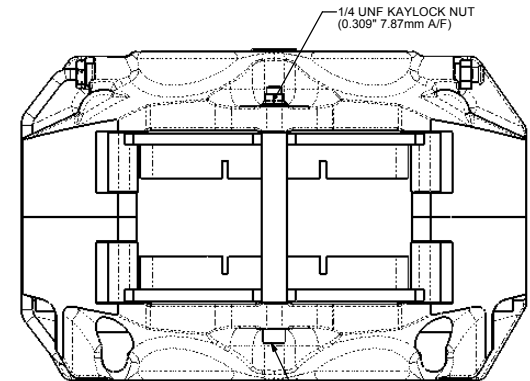
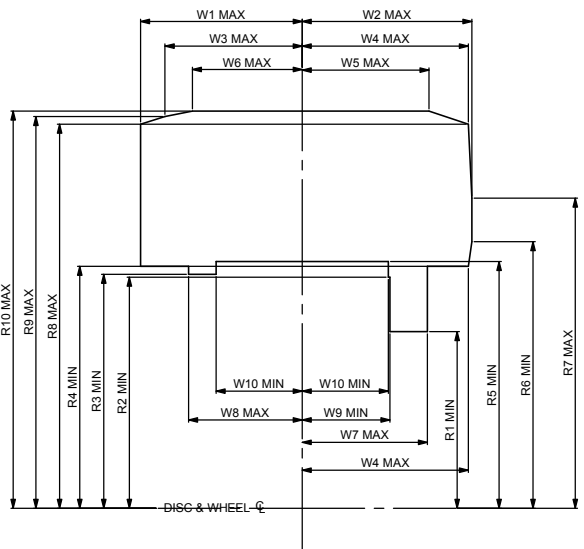
KEY TO DIMENSIONS
DIMENSION 'PL' - TOP OF PAD MATERIAL TO MOUNTING BOSS FACE WITH PAD HANGING DOWN ON THE RETAINING PINS.
DIMENSION 'C' - DISC CENTRE LINE TO MOUNTING STUD CENTRE LINE.
DIMENSION 'U' - WHEEL CENTRE TO CALIPER MOUNTING BOSS FACE, (DISC DIAMETER / 2) - 'PL' DIMENSION.
DIMENSION 'H' - MOUNTING HOLE DIAMETER.
RADIUS 'N' - RADIUS OF DISC PATHWAY.
EFFECTIVE RAD. - DISTANCE FROM WHEEL CENTRE LINE TO NOMINAL PISTON CENTRE LINE.

AP RACING TECHNICAL SECTION WILL BE PLEASED TO ADVISE ON THE MOST SUITABLE EQUIPMENT FOR ANY APPLICATION.

REPLACEMENT SEAL KIT
SEAL KIT (HIGH TEMP) CP4518-GG

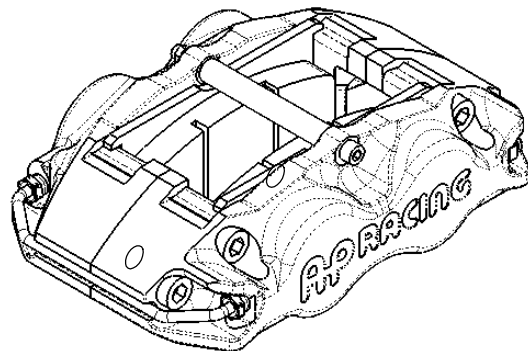
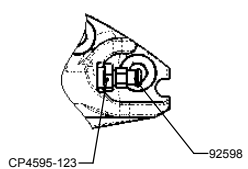
RECIRCULATING KIT PART NUMBER, CP7751-32

CP8240-2SOL - RIGHT HAND
CP8240-3SOL - LEFT HAND



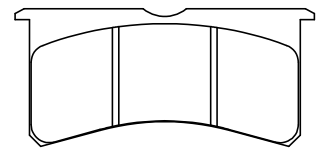
PAD RETAINER BOLTS SHOULD BE TIGHTENED TO A TORQUE OF 11lbs ft (14.9Nm) MAX

ALTERNATIVE TWO PIECE BLEEDSCREW ARRANGEMENT



PAD INFORMATION

POLYMATRIX PADS TYPE 7420
HAWK PADS TYPE HB-521



PAD THICKNESS - 0.795" (20.20mm)
PAD AREA - 7.854 in² (50.67cm²)
PAD VOLUME - 6.244 in³ (102.35cm³)

Radial Profile Chart										
Disc	R1	R2	R3	R4	R5	R6	R7	R8	R9	R10
Ø12.2" (309.9)	3.098 (78.70)	4.053 (102.94)	4.102 (104.19)	4.240 (107.69)	4.326 (109.89)	4.674 (118.71)	5.440 (138.18)	6.733 (171.03)	6.869 (174.48)	6.964 (176.89)
Eff Rad	W1	W2	W3	W4	W5	W6	W7	W8	W9	W10
5.252 (133.4)	2.835 (72.00)	2.976 (75.60)	2.405 (61.08)	2.917 (74.08)	2.224 (56.50)	1.925 (48.90)	2.198 (55.77)	1.984 (50.65)	1.540 (39.12)	1.510 (38.35)
Disc	R1	R2	R3	R4	R5	R6	R7	R8	R9	R10
Ø11.75" (296.45)	2.902 (73.70)	3.823 (97.11)	3.885 (98.68)	4.023 (102.18)	4.102 (104.18)	4.449 (113.00)	5.215 (132.46)	6.544 (166.21)	6.685 (169.81)	6.745 (171.33)
Eff Rad	W1	W2	W3	W4	W5	W6	W7	W8	W9	W10
4.035 (127.88)	2.835 (72.00)	2.976 (75.60)	2.405 (61.08)	2.917 (74.08)	2.224 (56.50)	1.925 (48.90)	2.198 (55.77)	1.984 (50.65)	1.540 (39.12)	1.510 (38.35)

FOR THE 0.81" DISC THICKNESS VERSION PLEASE SEE CP8240-10CD.

Alterations				
Date & No.	Particulars	Zone	Initials	
1 01/11/2006 B4585	FIRST ISSUE			# CDA
2 09/01/2007 B4695	SPARES LIST UPDATED.			# CDA

SCALE 1:1	SHEET 1 OF 2
DRAWN Chris Arrowsmith	
APPROVED	
DERIVED FROM	
TITLE	4 POT, LUG MOUNTED CALIPER
DRG NO.	CP8240-1CD

B1 INSTALLATION DRAWING

IF THIS DOCUMENT IS PRINTED IN HARDCOPY, IT IS FOR INFORMATION USE ONLY AND THEREFORE IS NOT SUBJECT TO UPDATING CONTROLS. ALWAYS REFER TO SOLIDWORKS VIEWER FOR LATEST ISSUE

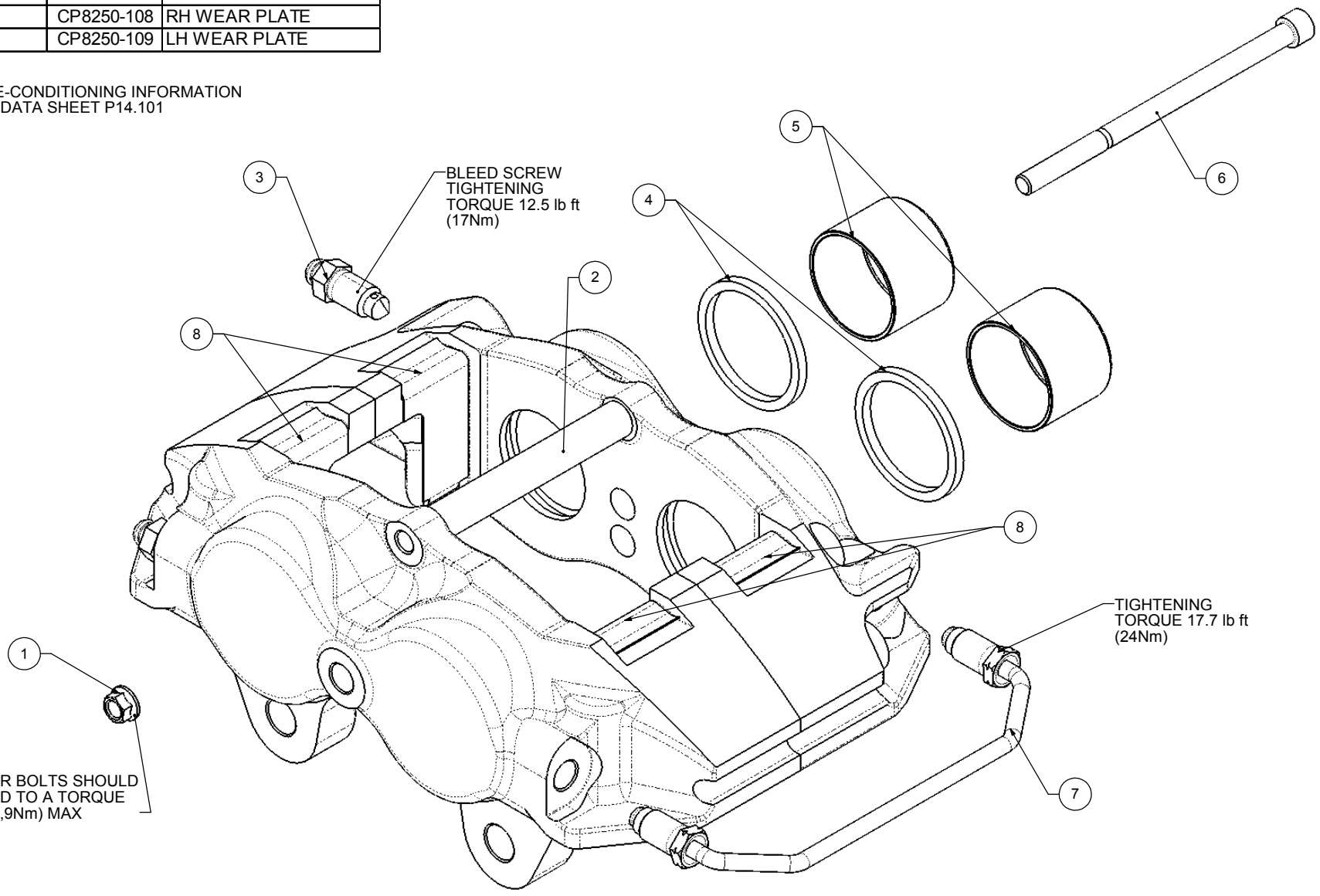


THIS DRAWING IS CONFIDENTIAL AND IS SUPPLIED ON THE EXPRESS CONDITION THAT IT SHALL NOT BE LOANED OR COPIED OR DISCLOSED TO ANY OTHER PERSON OR USED FOR ANY OTHER PURPOSE WITHOUT THE WRITTEN CONSENT OF AP RACING LTD.

AP RACING
 AP Racing
 Wheler Road
 Coventry
 CV3 4LB
 Tel: +44 024 7663 9595
 Fax: +44 024 7663 9559
 e-mail: sales@apracing.co.uk
 Web site: HTTP://www.apracing.com
 © AP Racing Ltd. 2005

SPARE PARTS LIST			
REF	QTY / CALIPER	PART No.	DESCRIPTION
1	1	CP3819-108	0.25" UNF NUT
2	1	CP5830-109	PAD RETAINER
3	2	CP3720-182	BLEED SCREWS
4	1	CP4518-GG	HIGH TEMP SEAL KIT
5	4	CP4751-129	1.375" PISTON
6	1	CP4751-128	0.25" UNF BOLT
7	1	CP7751-6	PIPE ASSEMBLY
8	2	CP8250-108	RH WEAR PLATE
	2	CP8250-109	LH WEAR PLATE

FOR CALIPER RE-CONDITIONING INFORMATION SEE AP RACING DATA SHEET P14.101



PAD RETAINER BOLTS SHOULD BE TIGHTENED TO A TORQUE OF 11lbs ft (14,9Nm) MAX

Issue No	Alterations		
	Date & No.	Particulars	Zone / Initials
-	-	SEE SHEET 1 FOR ISSUE INFORMATION.	-

SCALE 1:1	SHEET 1 OF 2
DRAWN	Chris Arrowsmith
APPROVED	
DERIVED FROM	
TITLE	
DRG NO.	CP8240-1CD